

MICRO SWITCH

A DIVISION OF MINNEAPOLIS-HONEYWELL REGULATOR COMPANY
FREEPORT, ILLINOIS

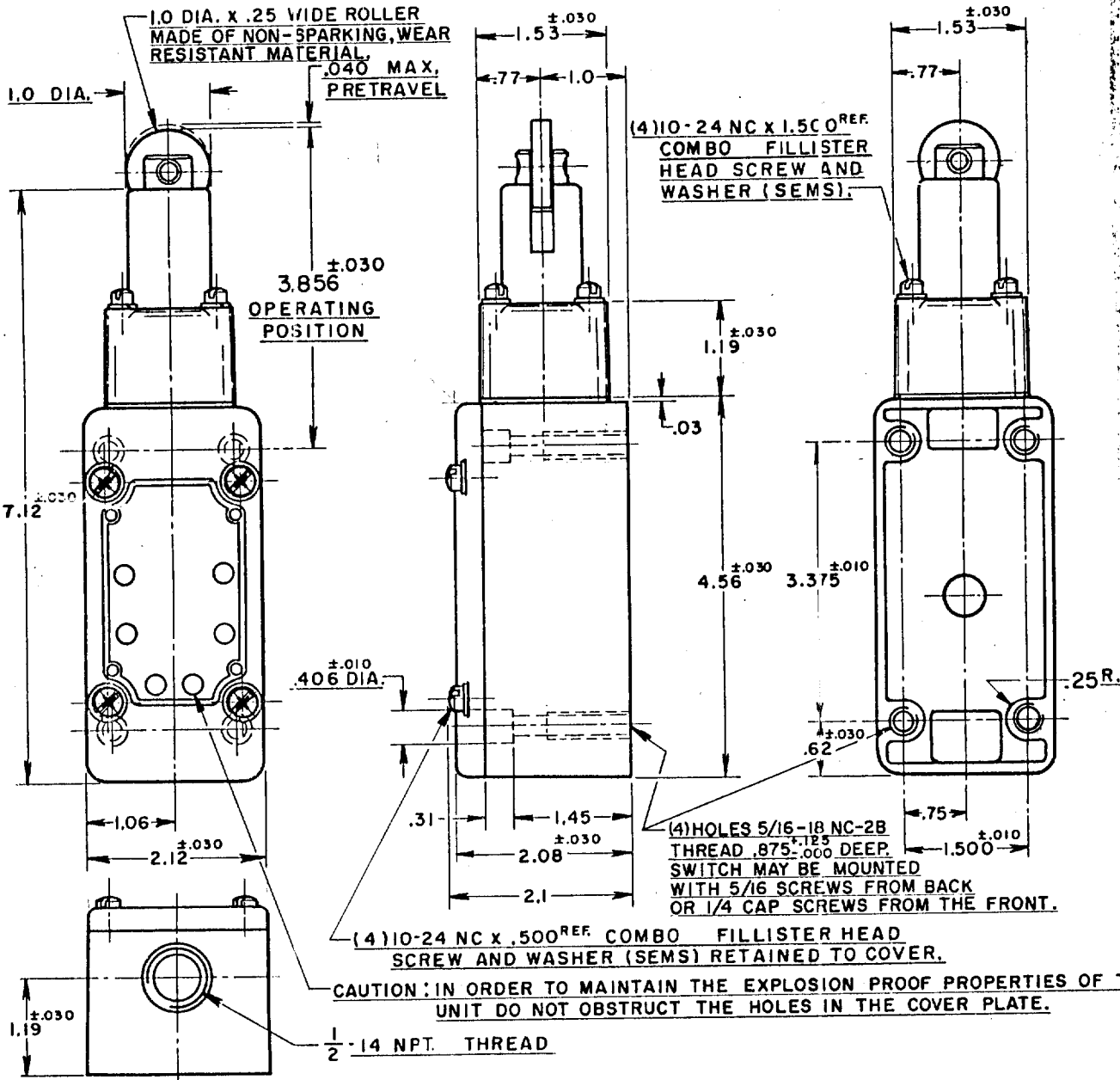
FED. MFR. CODE 91929

SWITCH - ENCLOSED

105ML1-E1



THIS DRAWING COVERS A PROPRIETARY ITEM AND IS THE PROPERTY OF MICRO SWITCH, A DIVISION OF HONEYWELL. THIS DRAWING IS NOT TO BE COPIED OR USED WITHOUT THE APPROVAL OF MICRO SWITCH.



NOTE -

- 1- ROLLER ASSEMBLY MAY BE RE-ASSEMBLED 90° FROM POSITION SHOWN.
- 2- IT IS ESSENTIAL THAT THE CONDUIT OPENING BE PROPERLY SEALED IN ORDER TO MAINTAIN THE EXPLOSION PROOF PROPERTIES.
- 3- SWITCH WILL PERFORM SATISFACTORILY IN TEMPERATURES TO MINUS 30°F.
-LISTED BY UNDERWRITERS LABORATORY, INC. FOR USE IN CLASS I GROUPS C AND D VAPOR-AIR 4-ATMOSPHERES, AND CLASS 2 GROUPS E, F AND G DUST-AIR ATMOSPHERES

CHARACTERISTICS

OPERATING FORCE --- 6 LBS. APPROX.

RELEASE FORCE --- 4 LBS. APPROX.

DIFFERENTIAL TRAVEL --- .020 MAX.

OVERTRAVEL --- .475 MIN.

SWITCH - BASIC REPLACEMENT --- | MNI

ELECTRICAL DATA

CONTACT ARRANGEMENT
TWO CIRCUIT DOUBLE THROW
DOUBLE BREAK

(A) 10A-120, 240, OR 480 VAC, 1/2 HP-120 VAC
1 HP-240 VAC; D.B.A-115 VDC; 0.4 A-230 VDC

(B) PILOT DUTY: 720VA-HEAVY DUTY
600 VAC MAX

(C)

SCALE 1/2 TO 1

DO NOT SCALE PRINT

UNLESS OTHERWISE SPECIFIED
DIMENSIONS ARE IN INCHES

TOLERANCES ARE:

ONE PLACE (.0)	±.030
TWO PLACE (.00)	±.015
THREE PLACE (.000)	±.008
ANGLES	M

WEIGHT 1 LB. 13 OZ.



REPLACES

RELEASE NO. SR 7258

DATE 8 FEB 58

CHECK

DATE 7 FEB 58

CHECK

DATE 14 FEB 58

CHECK

DATE 5 FEB 58

CHECK

DATE 14 FEB 58

CHECK

DATE 5 FEB 58

CHECK

DATE 5 FEB 58

X-ON Electronics

Largest Supplier of Electrical and Electronic Components

Click to view similar products for [Limit Switches](#) category:

Click to view products by [Honeywell](#) manufacturer:

Other Similar products are found below :

[5ML1-E1](#) [5ML31](#) [LZG1](#) [LZL1-6C](#) [622EN114-R](#) [622EN18-6](#) [622EN224-6B](#) [622EN230](#) [622EN237-R](#) [622EN69-3](#) [622EN85-RB](#) [MA-10019](#)
[6PA109](#) [7LS51](#) [83547001](#) [83725002](#) [83830001](#) [83840701](#) [83841001](#) [83881140](#) [8AS42](#) [8LS10](#) [8LS125-4PG](#) [8LS152-4PGN20](#) [914CE16-](#)
[3A](#) [914CE3-3L1](#) [915PA10](#) [91MCE16-P2O](#) [924CE16-Y3](#) [924CE1-S6](#) [924CE1-T25A](#) [924CE1-T3](#) [924CE1-T9A](#) [924CE2-T9](#) [924CE31-Y20-](#)
[X5](#) [924CE31-Y3L1](#) [GL-10054](#) [GLAB26J2B](#) [GLDB03C-6](#) [GLDC05C](#) [GLZ324](#) [H3141CAKAA](#) [RDI-G-L5B](#) [DD-10000](#) [DT-2R3-A7](#)
[14CE16-3N28](#) [14CE18-N15](#) [151ML3-E1](#) [E3102BAAAA](#) [BFL1-AW1-S](#)