

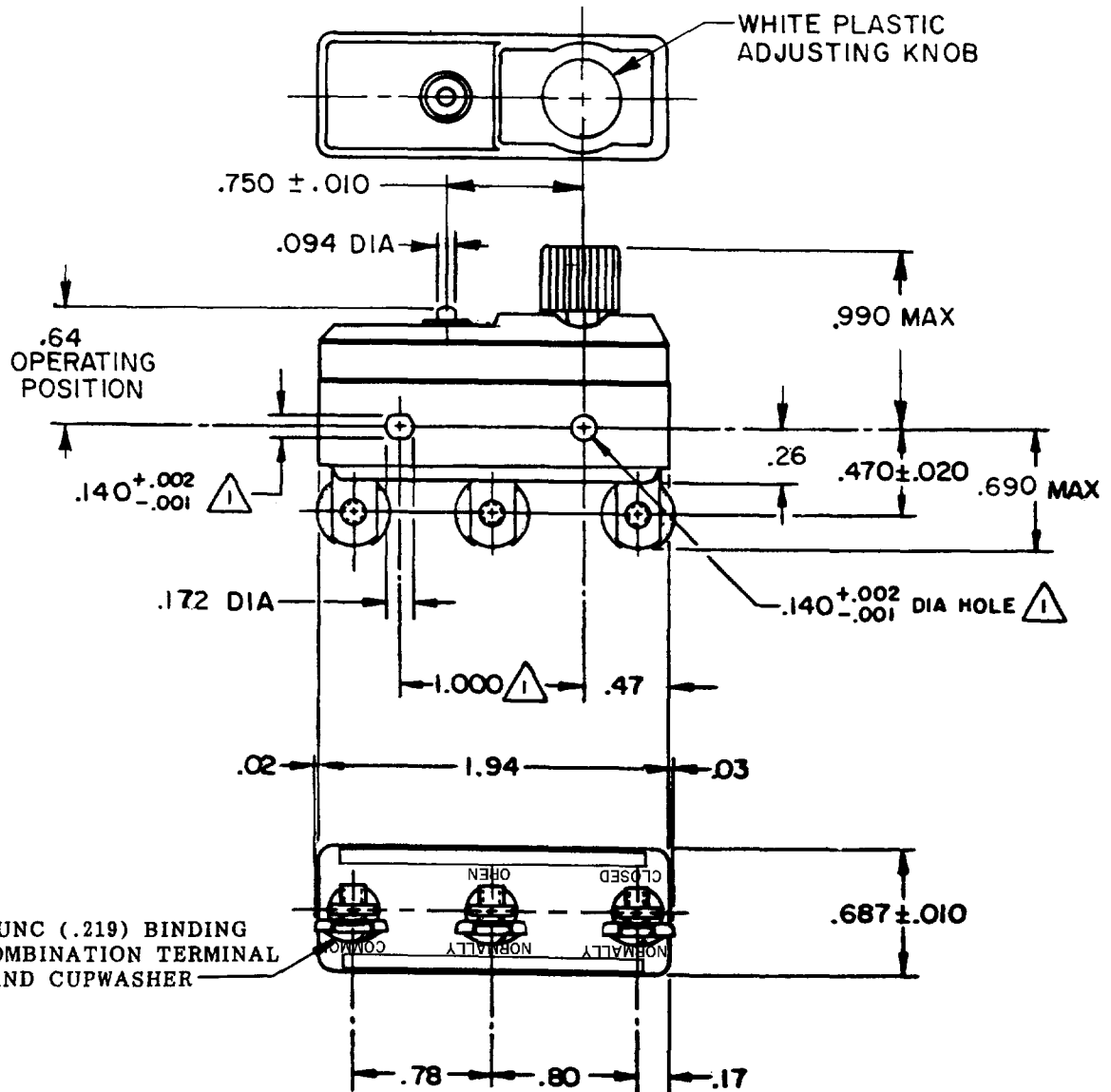
MICRO SWITCH

FREERPORT ILLINOIS, U.S.A
A DIVISION OF HONEYWELL
FED. MFG. CODE 91929

SWITCH — BASIC

CATALOG LISTING

10BS221

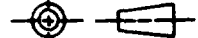


NOTES

- ⚠ MOUNTING HOLES WILL ACCEPT PINS OR SCREWS OF .139 MAX DIA ON 1.000 ± .002 CENTERS
- 2 DIAL WHEEL ROTATION 300°

THIS DRAWING COVERS A PROPRIETARY ITEM AND IS THE PROPERTY OF MICRO SWITCH, A DIVISION OF HONEYWELL. THIS DRAWING IS NOT TO BE COPIED OR USED WITHOUT THE APPROVAL OF MICRO SWITCH.

THIRD ANGLE PROJECTION



CHARACTERISTICS(AT MIN SETTING)

AT MIN SETTING
OPERATING FORCE ———— 32 OZ MAX
RELEASE FORCE ———— 10 OZ MIN
DIFFERENTIAL TRAVEL ———— .0015—.0020

AT MAX SETTING
OVERTRAVEL ———— .010 MIN

ELECTRICAL DATA

CONTACT ARRANGEMENT

S P D T

20A-125, 250 OR 480 VAC
3/4 HP-125 VAC; 1 1/2 HP-250 VAC
60/75°C(Cu)



SCALE FULL

DO NOT SCALE PRINT

TOLERANCES

APPLY TO DECIMAL UNITS. CONVERSIONS ARE ONLY FOR REFERENCE. UNLESS NOTED, TOLERANCES ARE Z

	DIAM.	TOL.	DIAM.	TOL.
	mm	mm/in	in	mm/in
NO PLACES	X	1/64	X	0.01/60
ONE PLACE	X	0.01/60	X	0.01/60
TWO PLACES	X, XX	0.01/60	X, XX	0.01/60
THREE PLACES	X, XX, XXX	0.01/60	X, XX, XXX	0.01/60

DESIGN UNITS SI METRIC US CUSTOMARY

WEIGHT

10BS221

M

DRAWING NUMBER

ISSUE 10

REVISIONS

A	C080053	JALA	5 APR 95
B	C0-77863	G J W	10 MAY 96

REPLACES X72317-10BS

RELEASE NO. PR-10010-T

CHECK

CHECK

CHECK

CHECK

CHECK

CHECK

CHECK

CHECK

FORMTEK

DRAWN

T S K

16 APRIL

X-ON Electronics

Largest Supplier of Electrical and Electronic Components

Click to view similar products for [Basic / Snap Action Switches](#) category:

Click to view products by [Honeywell](#) manufacturer:

Other Similar products are found below :

[5SM901-S12](#) [5SM9-S12N195](#) [01.098.1358.1](#) [602EN532](#) [602EN535-RB](#) [602HE5-RB1](#) [604HE162](#) [604HE223-6B](#) [624HE17-RB](#) [6HM82](#)
[6HM89](#) [6SE1](#) [6SX1-H58](#) [70500216](#) [70599106](#) [MBD5B1](#) [MBH2731](#) [73-316-0012](#) [EXD-AR20](#) [79211923](#) [79218589](#) [7AS12](#)
[MIL30126AB6BBMD4A12XAU](#) [ML-1155](#) [ML-1376](#) [831010C3.0](#) [831090C2.EL](#) [83131904](#) [84212012](#) [8AS239](#) [8HM73-3](#) [8SX26-H33](#)
[914CE1-6G](#) [PL-100](#) [11SM1077-H4](#) [11SM1077-H58](#) [11SM1-TN107](#) [11SM405](#) [11SM8423-H2](#) [11SX37-T](#) [11SX48-H58](#) [11SM2442-T](#)
[11SM76-T](#) [11SM77-H58](#) [11SM77-T](#) [11SM863-T](#) [11SM866](#) [A7CN-1M-1-LEFT](#) [A831700C7.0](#) [121EN187-R](#)