

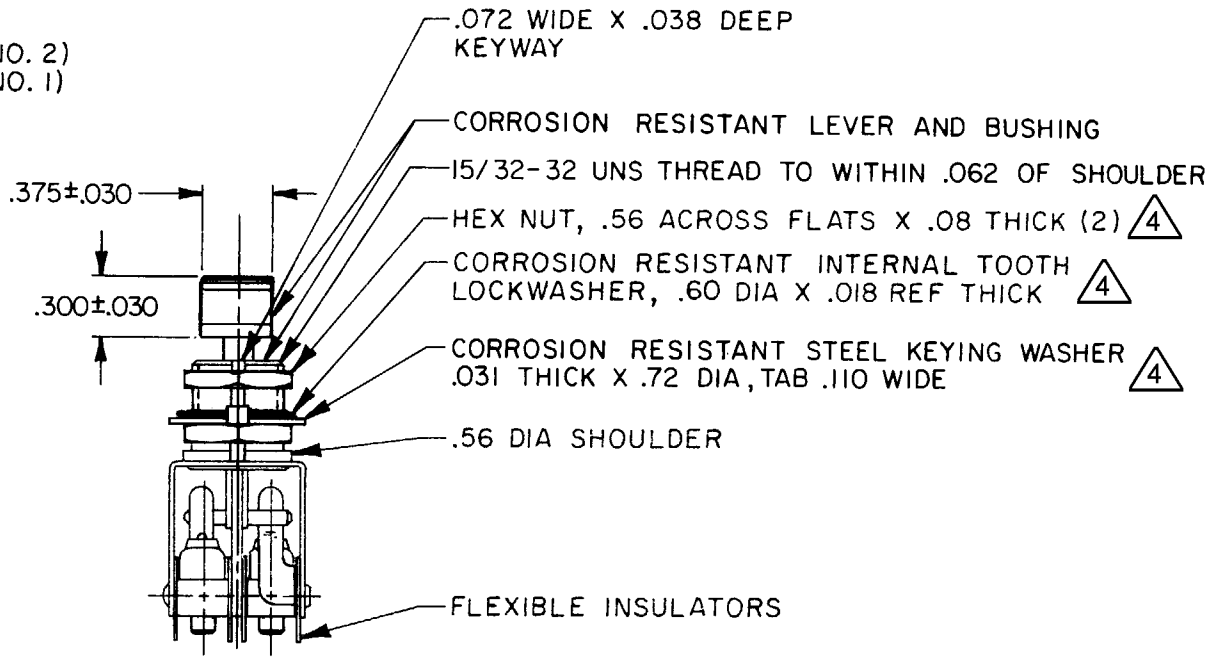
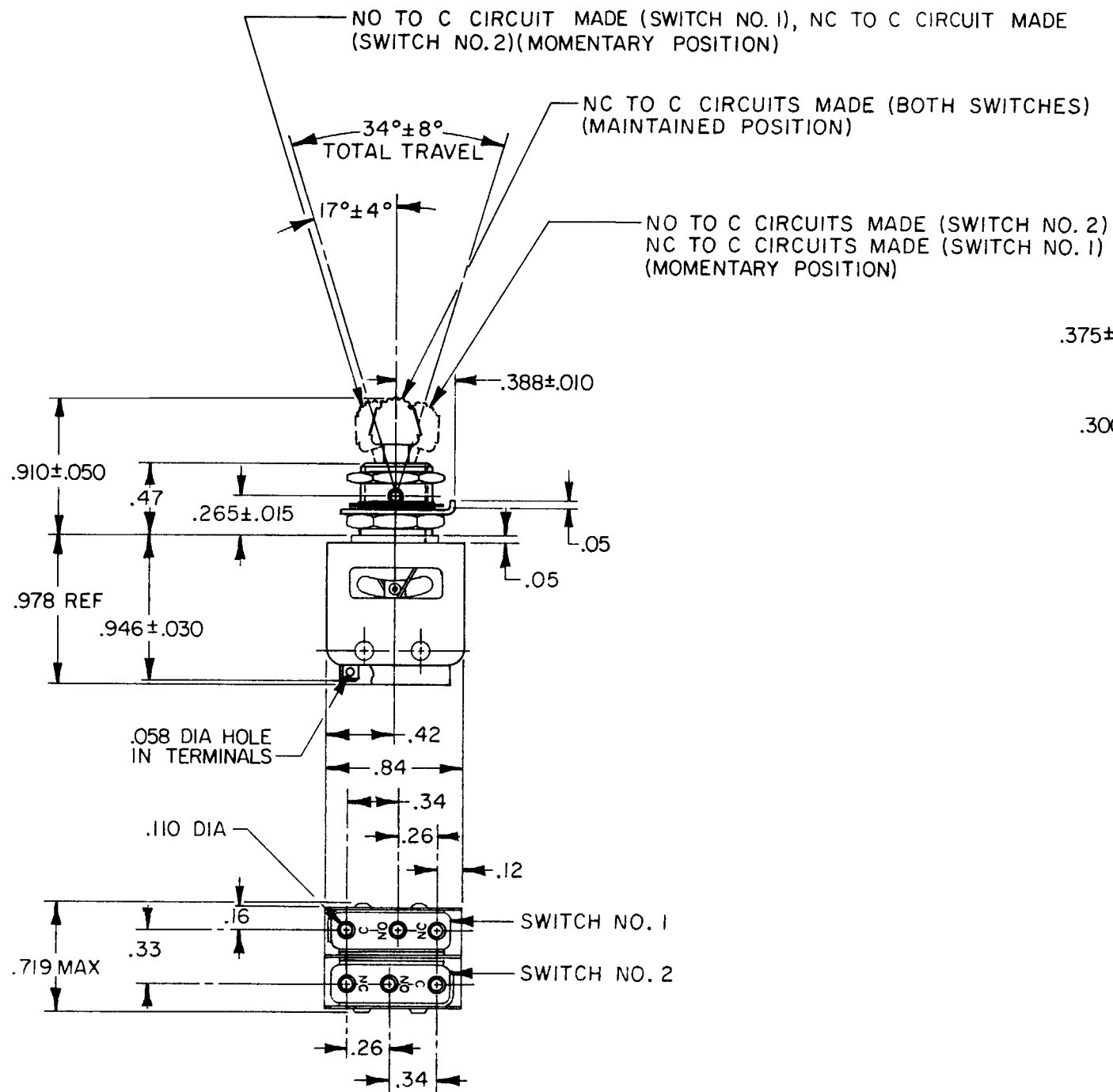
**MICRO SWITCH**  
 FREEPORT, ILLINOIS, U.S.A.  
 A DIVISION OF HONEYWELL  
 FED. MFG. CODE 91929

**ASSEMBLY -  
 TOGGLE SWITCH**

CATALOG LISTING  
**13AT66**

CATALOG LISTING  
**13AT66**  
 PAGE 1 OF 1  
 ISSUE **M**  
 9  
 REVISIONS  
 A CO52725  
 R J H  
 24 MAY 83  
 B CO56281  
 G J W  
 28 SEP 85  
 C CO66089  
 D A W  
 13 FEB 91  
 D 205419  
 CSL  
 24 APR 02  
 CHECK  
 31 MAY 83  
 RASTER  
 FO-92851-B  
 DRAWN  
 R J H 24 MAY 83

REPLACES  
 SR-8823



- NOTES**
- 1 - UNIT INCLUDES CAT. LIST. "1SM1" TYPE BASIC SWITCH (2)
  - 2 - TERMINALS ARE PLATED FOR SOLDERING
  - 3 - KNOB PORTION OF TOGGLE LEVER BLACK ANODIZED
  - 4 - HARDWARE FURNISHED ASSEMBLED WITH SWITCH OR IN PACKET PER MIL-PRF-8805
  - 5 - REPLACEMENT MOUNTING HARDWARE PACKET 15PA312-AT

THIS DRAWING COVERS A PROPRIETARY ITEM AND IS THE PROPERTY OF MICRO SWITCH, A DIVISION OF HONEYWELL. THIS DRAWING IS NOT TO BE COPIED OR USED WITHOUT THE APPROVAL OF MICRO SWITCH.

CHARACTERISTICS	ELECTRICAL DATA
	CONTACT ARRANGEMENT S P D T (2)
	250 VAC ----- 5 AMP
	30 VOLTS DC RATING
	INDUCTIVE ----- SEA LEVEL --- 3 AMP 50,000 FT --- 2.5 AMP
	RESISTIVE ----- SEA LEVEL --- 5 AMP 50,000 FT --- 5 AMP
	MAXIMUM INRUSH ----- 24 AMP

SCALE FULL																												
DO NOT SCALE PRINT																												
TOLERANCES APPLY TO DESIGN UNITS. CONVERSIONS ARE ONLY FOR REFERENCE. UNLESS NOTED, TOLERANCES ARE ±																												
<table border="1"> <thead> <tr> <th>DIM.</th> <th>TOL.</th> <th>DIM.</th> <th>TOL.</th> </tr> <tr> <th>mm</th> <th>mm/in</th> <th>in</th> <th>mm/in</th> </tr> </thead> <tbody> <tr> <td>NO PLACES</td> <td>X</td> <td>17.04</td> <td></td> </tr> <tr> <td>ONE PLACE</td> <td>X, X</td> <td>0.41/0.18</td> <td>X, X</td> </tr> <tr> <td>TWO PLACES</td> <td>X, XX</td> <td>0.157/0.008</td> <td>X, XX</td> </tr> <tr> <td>THREE PLACES</td> <td>X, XXX</td> <td></td> <td>X, XXX</td> </tr> <tr> <td>ANGLES</td> <td></td> <td></td> <td></td> </tr> </tbody> </table>	DIM.	TOL.	DIM.	TOL.	mm	mm/in	in	mm/in	NO PLACES	X	17.04		ONE PLACE	X, X	0.41/0.18	X, X	TWO PLACES	X, XX	0.157/0.008	X, XX	THREE PLACES	X, XXX		X, XXX	ANGLES			
DIM.	TOL.	DIM.	TOL.																									
mm	mm/in	in	mm/in																									
NO PLACES	X	17.04																										
ONE PLACE	X, X	0.41/0.18	X, X																									
TWO PLACES	X, XX	0.157/0.008	X, XX																									
THREE PLACES	X, XXX		X, XXX																									
ANGLES																												
DESIGN UNITS <input type="checkbox"/> SI METRIC <input checked="" type="checkbox"/> US CUSTOMARY																												
THIRD ANGLE PROJECTION																												
WEIGHT																												

## X-ON Electronics

Largest Supplier of Electrical and Electronic Components

*Click to view similar products for [Toggle Switches](#) category:*

*Click to view products by [Honeywell](#) manufacturer:*

Other Similar products are found below :

[8928K478](#) [8951K2998](#) [8951K3310](#) [8956K1283](#) [8956K1285](#) [8956K1286](#) [8956K1287](#) [8961K155](#) [8A1-C-222](#) [020017-13](#) [0090-0001](#) [0121-0015](#) [CS115W](#) [CS120W](#) [CS215I](#) [CS8275](#) [637H/25](#) [7101SPDV30BE](#) [7103SDV30BE](#) [7105D](#) [7108P3YAV2BE](#) [71YY50282](#) [7209SY9AQE](#) [7209SYCBE](#) [7301K38](#) [7301SS24484](#) [7303KZQE](#) [7306K36](#) [7503K21](#) [7565K6](#) [7595K6](#) [7660K12](#) [7691K14](#) [7704K3](#) [8391K108](#) [8811K17](#) [8825K5](#) [8828K13](#) [8835K3](#) [8858K44](#) [8E4011](#) [1202W](#) [A201SCWZB04](#) [A207SYCB04](#) [A208J61ZQ0004](#) [A221T1TCQ](#) [A232M1YCQ](#) [A323S1CWZQ](#) [1201W](#) [1203W](#)