

MICRO SWITCH

A DIVISION OF HONEYWELL INTERNATIONAL REGULATED COMPANY
FREDERICK, MICHIGAN
FED. MFR CODE 91929

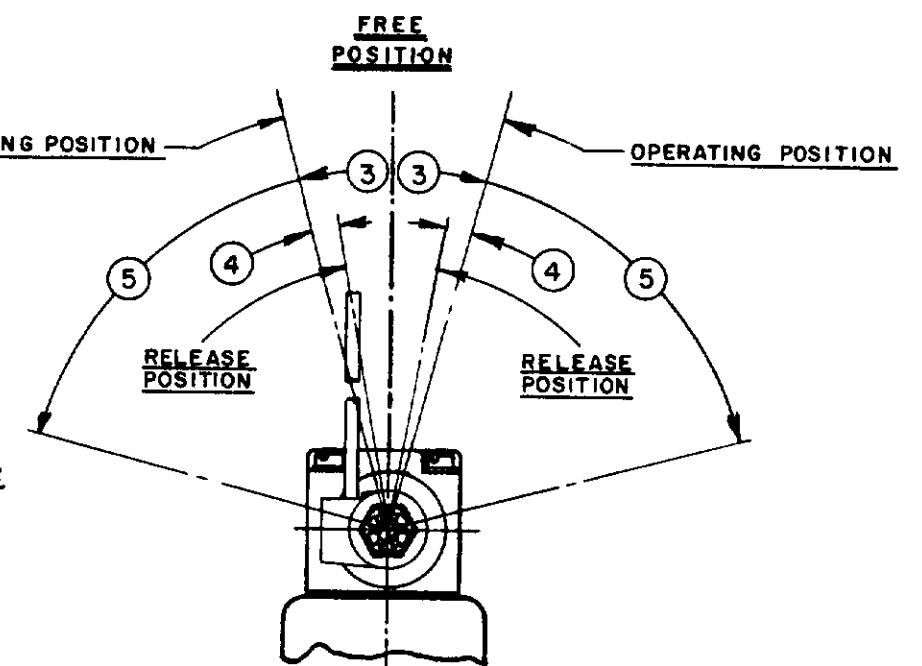
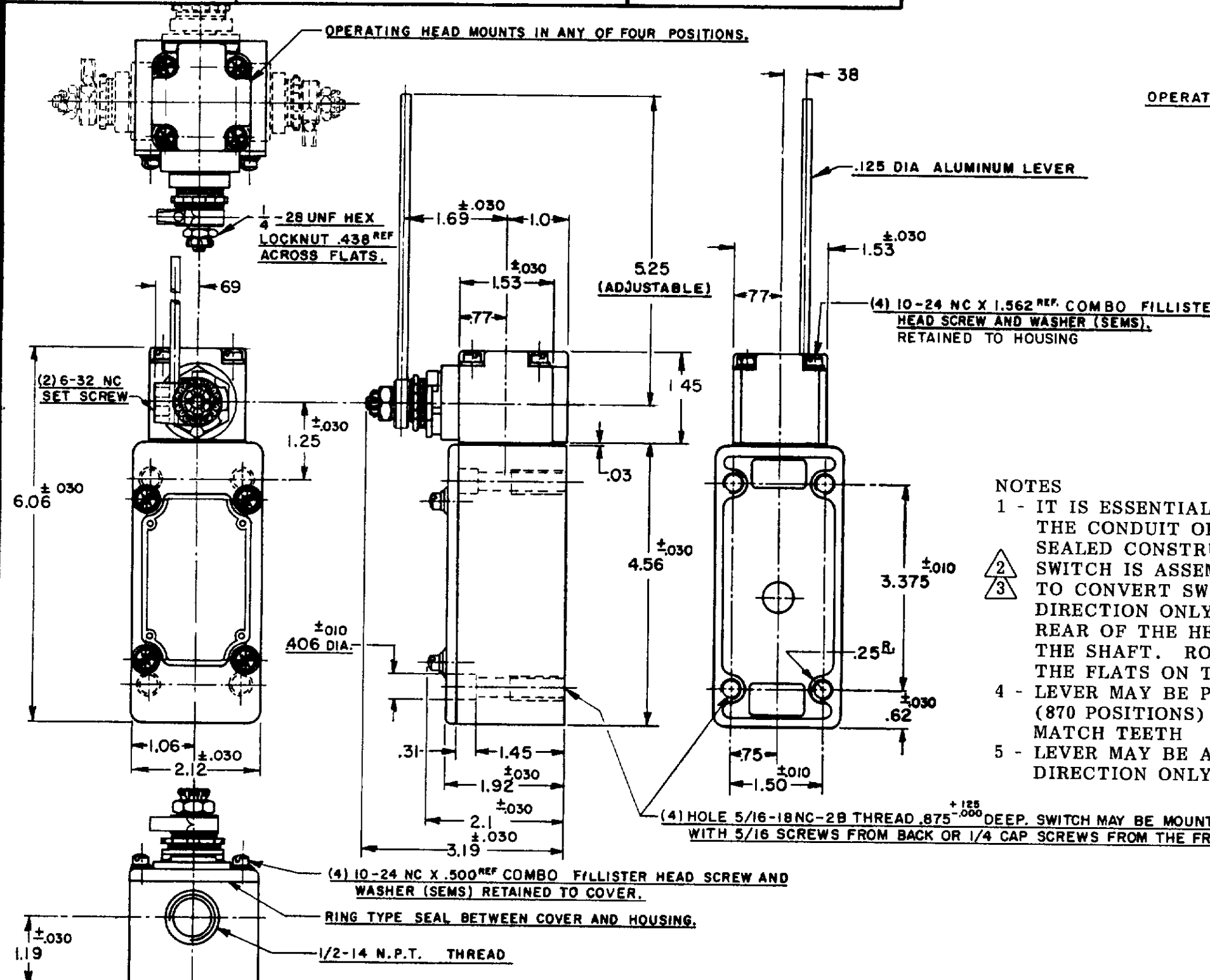
SWITCH-ENCLOSED

CATALOG LISTING
151ML10

THIS DRAWING COVERS A PROPRIETARY ITEM AND IS THE PROPERTY OF MICRO SWITCH A DIVISION OF HONEYWELL. THIS DRAWING IS NOT TO BE COPIED OR USED WITHOUT THE APPROVAL OF MICRO SWITCH



151ML10
 M
 DRAWING NUMBER
 12
 ISSUE
 REVISIONS
 A C052194 J A P 23 SEPT 83
 B C055051-6 J A P 17 DEC 84
 C C074287 G J W 23 APR 85
 CHECK C E C 30 SEPT 83
 CHECK C E C 30 SEPT 83
 DRAWN J A P 23 SEPT 83



- NOTES
- 1 - IT IS ESSENTIAL TO PREVENT ENTRANCE OF HARMFUL AGENTS THRU THE CONDUIT OPENING TO OBTAIN THE FULL BENEFIT OF THE SEALED CONSTRUCTION PROVIDED IN THIS UNIT
 - 2
3 SWITCH IS ASSEMBLED FOR ACTUATION IN CLOCKWISE DIRECTION ONLY TO CONVERT SWITCH FOR ACTUATION IN THE COUNTER-CLOCKWISE DIRECTION ONLY, REMOVE THE HEAD AND SLIDE THE CAM TOWARD THE REAR OF THE HEAD SUFFICIENTLY TO DISENGAGE FROM THE FLATS ON THE SHAFT. ROTATE THE CAM 180° AND RE-ENGAGE THE CAM WITH THE FLATS ON THE SHAFT
 - 4 - LEVER MAY BE POSITIVELY LOCKED AT INTERVALS OF APPROX 0.4° (870 POSITIONS) BY POSITIONING LEVER AND ROTATING SPACER TO MATCH TEETH
 - 5 - LEVER MAY BE ADJUSTED TO ACTUATE THE SWITCH IN THE CLOCKWISE DIRECTION ONLY OR THE COUNTER-CLOCKWISE DIRECTION ONLY

CHARACTERISTICS		ELECTRICAL DATA		SCALE 1/2 TO 1
OPERATING FORCE	5 OZ. MAX.	CONTACT ARRANGEMENT	BREAK DISTANCE	DO NOT SCALE PRINT
FULL OVERTRAVEL FORCE	7 OZ. MAX.	TWO CIRCUIT - DOUBLE THROW DOUBLE BREAK		UNLESS OTHERWISE SPECIFIED
RELEASE FORCE	3/4 OZ. MIN.			DIMENSIONS ARE IN INCHES
PRETRAVEL	③ -15° MAX	10A-120, 240, 480, OR 600 VAC	UL	TOLERANCES ARE:
DIFFERENTIAL TRAVEL	④ -7° MAX.	1/2 HP-120 VAC, 1 HP-240 VAC		ONE PLACE (.0) ±.030
OVERTRAVEL	⑤ -60° MIN.	0.8 A-115 VDC, 0.4 A-230 VDC		TWO PLACE (.00) ±.008
SWITCH-BASIC REPLACEMENT	1M5	PILOT DUTY 600 VAC MAX		THREE PLACE (.000) ±.008
		SP		ANGLES ±
				WEIGHT

X-ON Electronics

Largest Supplier of Electrical and Electronic Components

Click to view similar products for [Limit Switches](#) category:

Click to view products by [Honeywell](#) manufacturer:

Other Similar products are found below :

[5ML1-E1](#) [5ML31](#) [LZG1](#) [LZL1-6C](#) [622EN114-R](#) [622EN18-6](#) [622EN224-6B](#) [622EN230](#) [622EN237-R](#) [622EN69-3](#) [622EN85-RB](#) [MA-10019](#)
[6PA109](#) [7LS51](#) [83547001](#) [83725002](#) [83830001](#) [83840701](#) [83841001](#) [83881140](#) [8AS42](#) [8LS10](#) [8LS125-4PG](#) [8LS152-4PGN20](#) [914CE16-](#)
[3A](#) [914CE3-3L1](#) [915PA10](#) [91MCE16-P2O](#) [924CE16-Y3](#) [924CE1-S6](#) [924CE1-T25A](#) [924CE1-T3](#) [924CE1-T9A](#) [924CE2-T9](#) [924CE31-Y20-](#)
[X5](#) [924CE31-Y3L1](#) [GL-10054](#) [GLAB26J2B](#) [GLDB03C-6](#) [GLDC05C](#) [GLZ324](#) [PS21R-NT11N7-YK0](#) [H3141CAKAA](#) [RDI-G-L5B](#) [DD-](#)
[10000](#) [DT-2R3-A7](#) [14CE16-3N28](#) [14CE18-N15](#) [151ML3-E1](#) [E3102BAAAA](#)