

MICRO SWITCH

A DIVISION OF MINNEAPOLIS-HONEYWELL REGULATOR COMPANY
MINNEAPOLIS, MINN. 55402

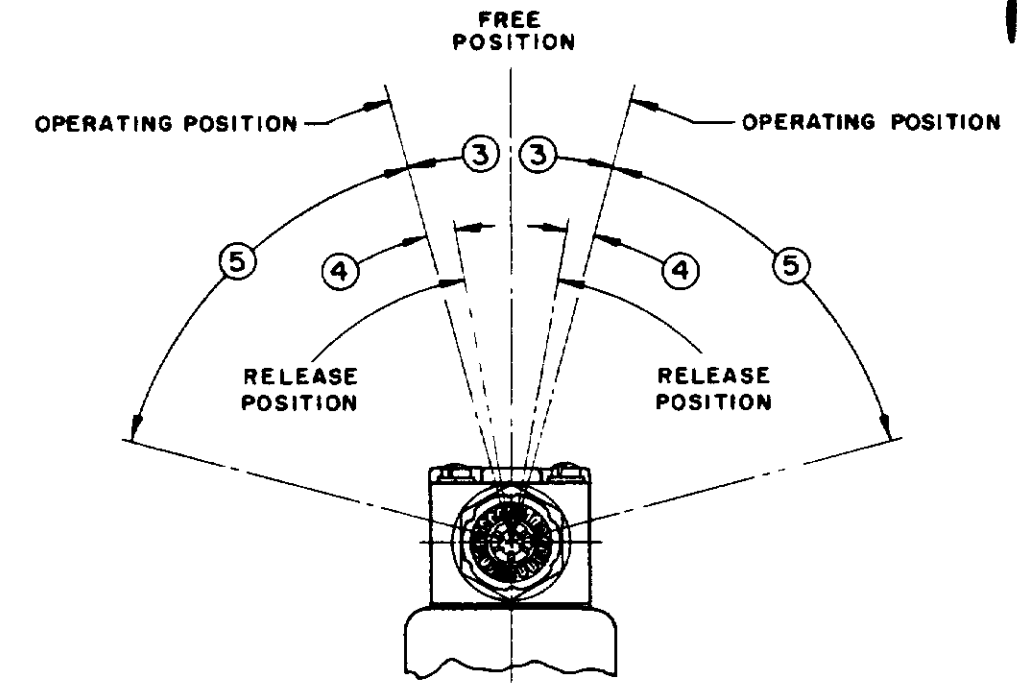
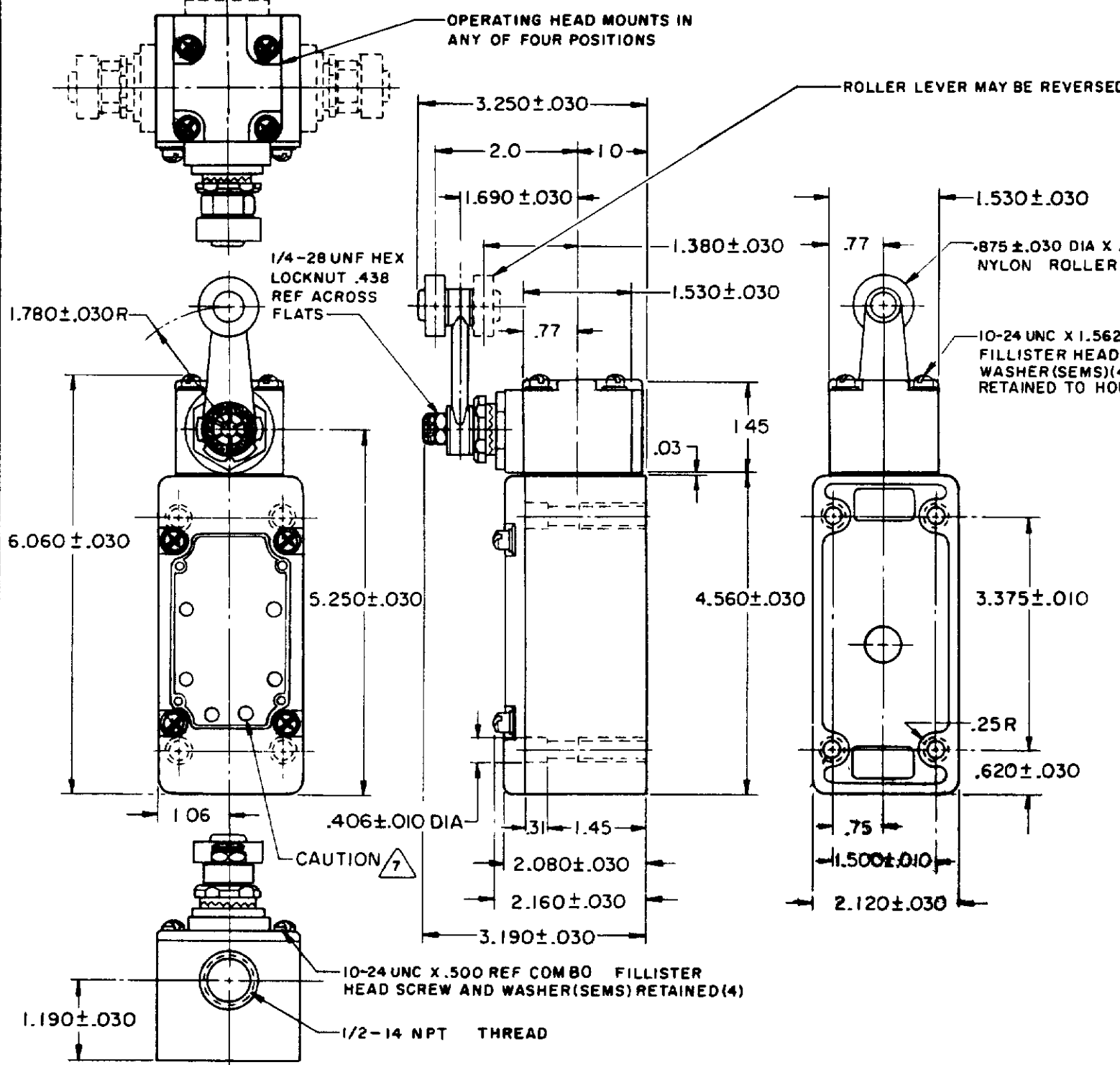
FED MFR CODE 91929

SWITCH - ENCLOSED

CATALOG LISTING
151 ML 3 - E1

M

M 151ML 3 - E1
 DRAWING NUMBER
 ISSUE 10
 REVISIONS
 A CO 18841 M B F 3 DEC 64
 B CO 20576 M B F 1 DEC 65
 C CO 24575 M B S 10 SEP 68
 D PR 3294 G L H 9 APR 73
 E CO 32194 D TSK 26 SEPT 83
 F CO 58367 J A S 12 NOV 85
 G 55051 C T A 6 JAN 86
 H CO 63739 D J S 15 JUN 88
 J CO 74287 G J W 22 APR 93
 O M W 25 APR 63
 FO-80378-003



- NOTES
- LISTED BY UNDERWRITERS LABORATORY, INC. FOR USE IN CLASS 1, GROUPS C AND D VAPOR - AIR ATMOSPHERE, AND CLASS 2 GROUPS E, F AND G DUST - AIR ATMOSPHERES
 - SWITCH IS ASSEMBLED FOR ACTUATION IN EITHER DIRECTION TO CONVERT SWITCH FOR ACTUATION EITHER CLOCKWISE OR COUNTER-CLOCKWISE DIRECTION ONLY REMOVE THE HEAD AND SLIDE THE CAM TOWARD THE REAR OF THE HEAD SUFFICIENTLY TO DISENGAGE FROM THE FLATS ON THE SHAFT. ROTATE THE CAM 90° IN THE OPPOSITE DIRECTION OF THE ACTUATION DESIRED AND RE-ENGAGE THE CAM WITH THE FLATS ON THE SHAFT
 - LEVER MAY BE POSITIVELY LOCKED AT INTERVALS OF APPROX 0.4° (870 POSITIONS)
 - LEVER MAY BE ADJUSTED TO ACTUATE THE SWITCH IN THE CLOCKWISE DIRECTION ONLY, THE COUNTER-CLOCKWISE DIRECTION ONLY, OR IN BOTH DIRECTIONS
 - IT IS ESSENTIAL THAT THE CONDUIT OPENING BE PROPERLY SEALED IN ORDER TO MAINTAIN THE EXPLOSION PROOF PROPERTIES
 - SWITCH WILL PERFORM SATISFACTORILY IN TEMPERATURES TO MINUS 20°F

THIS DRAWING COVERS A PROPRIETARY ITEM AND IS THE PROPERTY OF MICRO SWITCH A DIVISION OF MINNEAPOLIS-HONEYWELL REGULATOR CO. THIS DRAWING IS NOT TO BE COPIED OR USED WITHOUT THE APPROVAL OF MICRO SWITCH

CHARACTERISTICS	ELECTRICAL DATA	SCALE 1/2 TO 1
OPERATING FORCE ----- 3 LB MAX	CONTACT ARRANGEMENT TWO CIRCUIT DOUBLE THROW DOUBLE BREAK	DO NOT SCALE PRINT
FULL OVERTRAVEL FORCE ----- 4 LB MAX		UNLESS OTHERWISE SPECIFIED
RELEASE FORCE ----- 1/4 LB MIN		DIMENSIONS ARE IN INCHES
PRETRAVEL ----- ③ ----- 15° MAX	10A-120, 240, OR 480 VAC, 1/2 HP - 120 VAC	TOLERANCES ARE:
DIFFERENTIAL TRAVEL ----- ④ ----- 7° MAX	1 HP - 240 VAC, 0.8 A - 115 VDC, 0.4 A - 230 VDC	ONE PLACE (.0) ± .030
OVERTRAVEL ----- ⑤ ----- 60° MIN	PILOT DUTY 720VA - HEAVY DUTY	TWO PLACE (.00) ± .018
SWITCH BASIC REPLACEMENT ----- 1MN1	600 VAC MAX	THREE PLACE (.000) ± .008
		ANGLES ±
		WEIGHT

X-ON Electronics

Largest Supplier of Electrical and Electronic Components

Click to view similar products for [Limit Switches](#) category:

Click to view products by [Honeywell](#) manufacturer:

Other Similar products are found below :

[5ML1-E1](#) [5ML31](#) [LZG1](#) [LZL1-6C](#) [622EN114-R](#) [622EN18-6](#) [622EN224-6B](#) [622EN230](#) [622EN237-R](#) [622EN69-3](#) [622EN85-RB](#) [MA-10019](#)
[6PA109](#) [7LS51](#) [83547001](#) [83725002](#) [83830001](#) [83840701](#) [83841001](#) [83881140](#) [8AS42](#) [8LS10](#) [8LS125-4PG](#) [8LS152-4PGN20](#) [914CE16-](#)
[3A](#) [914CE3-3L1](#) [915PA10](#) [91MCE16-P2O](#) [924CE16-Y3](#) [924CE1-S6](#) [924CE1-T25A](#) [924CE1-T3](#) [924CE1-T9A](#) [924CE2-T9](#) [924CE31-Y20-](#)
[X5](#) [924CE31-Y3L1](#) [GL-10054](#) [GLAB26J2B](#) [GLDB03C-6](#) [GLDC05C](#) [GLZ324](#) [PS21R-NT11N7-YK0](#) [H3141CAKAA](#) [RDI-G-L5B](#) [DD-](#)
[10000](#) [DT-2R3-A7](#) [14CE16-3N28](#) [14CE18-N15](#) [151ML3-E1](#) [E3102BAAAA](#)