

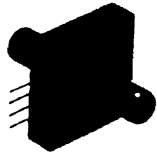
# Pressure Sensors

## Low Pressure Gage & Differential/Unamplified

731-821.

170PC Series

### Temperature Compensated Sensors



#### FEATURES

- Miniature package
- Low pressure measurement
- Calibrated Null and Span
- Temperature compensated for Span over 0 to 50°C
- Provides interchangeability

#### 176PC SERIES PERFORMANCE CHARACTERISTICS at 10.0 ± 0.01 VDC Excitation, 25°C

	Min.	Typ.	Max.	Units
Excitation	---	10	16	VDC
Null Offset	-2	0	+2	mV
Null Shift, 25° to 0°, 25° to 50°C	---	±3.0	---	mV
Sensitivity Shift, 25° to 0°, 25° to 50°C	---	---	±4.0 <sup>1</sup>	% Span
	---	---	±3.5 <sup>2</sup>	% Span
Repeatability & Hysteresis	---	±0.25	---	% Span
Response Time	---	---	1.0	msec
Input Resistance	---	6.3 K	---	ohms
Output Resistance	---	4.0 K	---	ohms
Stability over One Year	---	±0.5	---	% Span
Weight	---	7	---	grams

Key: 1 = 0-7", 0-14" H<sub>2</sub>O only  
2 = 0-28" H<sub>2</sub>O only

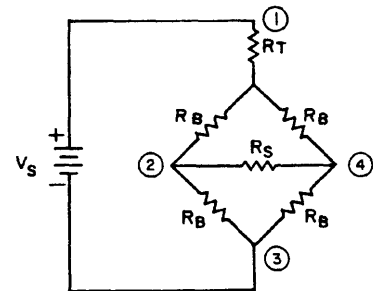
#### ENVIRONMENTAL SPECIFICATIONS

Operating Temperature	-40° to +85°C (-40° to +185°F)
Storage Temperature	-55° to +125°C (-67° to +257°F)
Compensated Temperature	0° to +50°C (32° to +122°F)
Shock	MIL-STD-202, Method 213 (150 g, half sine, 11 msec)
Vibration	MIL-STD-202, Method 204 (10 to 2000 Hz at 20 g)
Media	P2 port Wetted materials; polyester housing, epoxy adhesive, and silicon-to-glass bond* P1 port Dry gases only

\* Liquid media containing some highly ionic solutions could potentially neutralize the chip-to-glass tube bond

#### ELECTRICAL CONNECTIONS

(Internal Circuitry Shown)



#### NOTES

1. Circled numbers refer to sensor termination.
2.  $V_o = V_2 - V_4$  (referenced to pin 3).
3.  $R_b$  = Strain gage resistors (~4.8 kΩ).
4.  $R_t$  = Sensitivity temperature compensation resistor.
5.  $R_s$  = Sensitivity calibration resistor.

When a positive pressure is applied to port P2, the differential voltage  $V_2 - V_4$  (voltage at pin 2, with respect to ground, increases and voltage at pin 4 decreases) increases linearly with respect to the input pressure. When a vacuum pressure is pulled at port P2 (or positive pressure applied to port P1) the voltage  $V_2 - V_4$  decreases linearly with respect to the input pressure.

#### 176PC SERIES ORDER GUIDE

Catalog Listing	Pressure Range H <sub>2</sub> O	Span, mV			Max.	Sensitivity mV/"H <sub>2</sub> O Typ.	Overpressure "H <sub>2</sub> O Max.	Linearity, % Span	
		Min.	Typ.	Max.				P2 > P1 Max.	P2 < P1 Max.
176PC07HG2	0-7	26	28	30	4.00	140	±3.00	±1.50	
176PC07HD2	0-7	26	28	30	4.00	140	±3.00	±1.50	
176PC14HG2	0-14	33	35	37	2.50	140	±3.00	±1.50	
176PC14HD2	0-14	33	35	37	2.50	140	±3.00	±1.50	

Unamplified

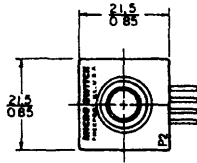
# Pressure Sensors

170PC Series

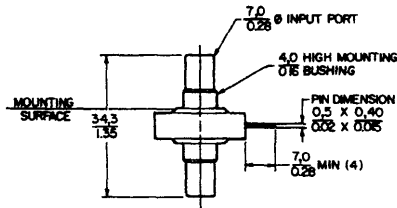
## Low Pressure Gage & Differential/Unamplified

**MOUNTING DIMENSIONS** (For reference only)

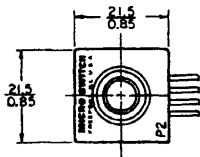
### Differential Types



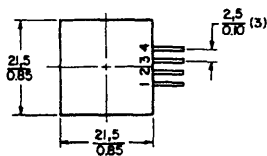
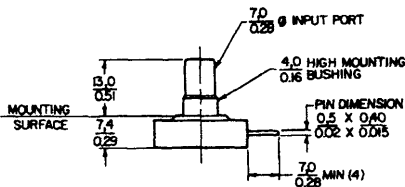
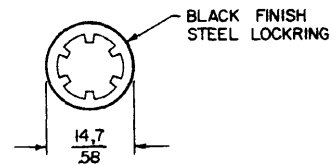
- Terminals**  
 1 - Vs (+)  
 2 - Output A  
 3 - Ground (-)  
 4 - Output B



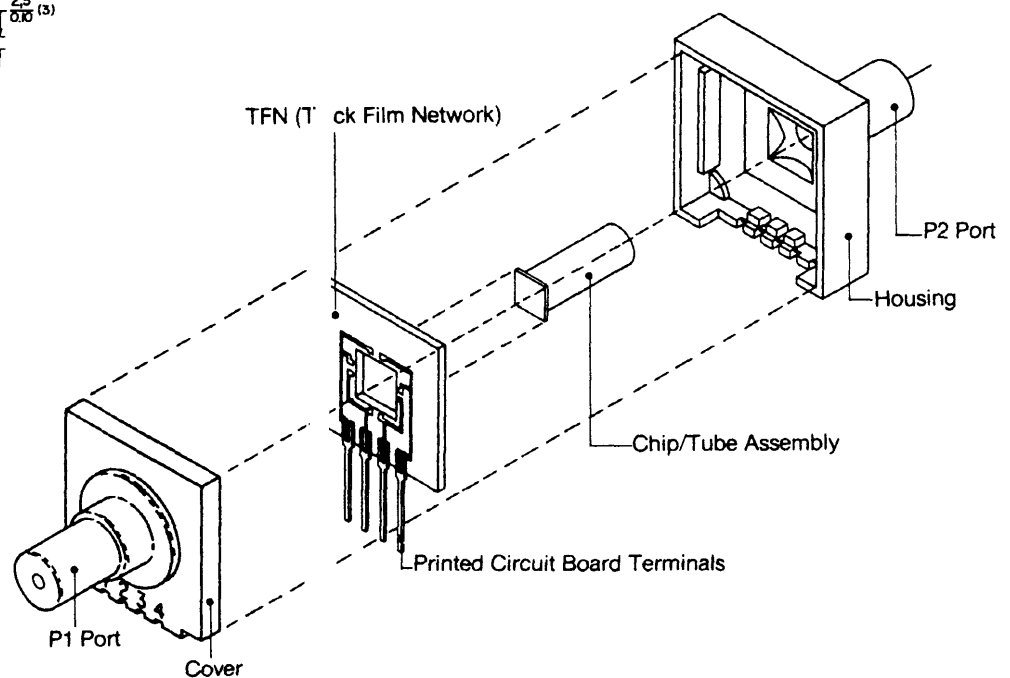
### Gage Types



### Mounting Hardware - PC10198



### 170PC CONSTRUCTION



## X-ON Electronics

Largest Supplier of Electrical and Electronic Components

*Click to view similar products for [Board Mount Pressure Sensors](#) category:*

*Click to view products by [Honeywell](#) manufacturer:*

Other Similar products are found below :

[80527-25.0H2-05](#) [80541-B00000150-01](#) [80541-B00000200-05](#) [80554-00700100-05](#) [80568-00300050-01](#) [81618-B00000040-01](#) [81739-B00000900-01](#) [81807-B00000020-01](#) [81808-B00000150-14](#) [82903-B00000020-01](#) [93.631.4253.0](#) [93.731.4353.0](#) [93.932.4553.0](#) [136PC150G2](#) [136PC15A1](#) [142PC95AW71](#) [142PC05DW70](#) [MPXV2202DPT1](#) [15PSI-G-4V](#) [1805-01A-L0N-B](#) [2000317-1](#) [26PCBKT](#) [26PCCFA6D26](#) [26PCCFS2G](#) [26PCCVA6D](#) [93.632.7353.0](#) [93.731.3653.0](#) [93.931.4853.0](#) [93.932.4853.0](#) [SCDA120-XSC05DC](#) [SP370-23-156-0](#) [185PC30DH](#) [192992-0059](#) [20INCH-G-MV-MINI](#) [26PCAFJ3G](#) [26PCAFS2G54](#) [26PCCEP5G24](#) [26PCJEU5G19](#) [30INCH-D1-MV-MINI](#) [ASCX15AN-90](#) [TSCSAAN001PDUCV](#) [DCAL401DN](#) [DCAL401GN](#) [XZ202798SSC](#) [XZ203676HSC](#) [SP370-25-116-0](#) [81717-00000050-05](#) [81794-B00001200-01](#) [HSCDLNN100PGAA5](#) [81618-B00000040-05](#)