

# Honeywell

## Interactive Catalog Replaces Catalog Pages

Honeywell Sensing and Control has replaced the PDF product catalog with the new **Interactive Catalog**. The **Interactive Catalog** is a power search tool that makes it easier to find product information. It includes more installation, application, and technical information than ever before.



**Click this icon to try the new  
Interactive Catalog.**

---

**Sensing and Control**  
Honeywell Inc.  
11 West Spring Street  
Freeport, Illinois 61032



**180PC SERIES PERFORMANCE CHARACTERISTICS at 8.0 ±0.01 VDC  
Excitation, 25°C**

	<b>Min.</b>	<b>Typ.</b>	<b>Max.</b>	<b>Units</b>
Excitation	7.00	8.00	16	VDC
Supply Current	---	---	6	mA
Current Sourcing Output	---	---	10	mA
Null Offset (184/185PC)	0.95	1.00	1.05	V
Null Offset (186PC)	3.45	3.50	3.55	V
Null Offset				
185PC15AT @ 2 psia	1.62	1.67	1.72	V
185PC30AT @ 2 psia	1.28	1.33	1.38	V
Output at Full Pressure (184/185PC, G,D)	5.90	6.00	6.15	V
Output at Full Pressure (185PC, A only)	5.85	6.00	6.15	V
Output at Full Pressure (186PC)	5.90	6.00	6.10	V
Span (184/185PC, G,D)	4.95	5.00	5.05	V
Span (185PC, A only)	4.90	5.00	5.10	V
Span (186PC)	---	5.00	---	V
Span (185PC15AT)	4.28	4.33	4.38	V
Span (185PC30AT)	4.62	4.67	4.72	V
Ratiometricity Error				
7 to 8V or 8 to 9V	---	±0.50	---	% Span
9 to 12V	---	±2.00	---	% Span
Temperature Error (Combined null and span)	-2%	0	+2%	% Span
Stability over One Year	---	±0.50	---	% Span
Response Time	---	---	1.00	msec
Weight	---	12	---	grams
Short Circuit Protection	Output may be shorted indefinitely to ground			
Output Ripple	None, DC device			
Ground Reference	Supply and output are common			

Amplified

**ENVIRONMENTAL SPECIFICATIONS**

Operating Temperature	-40° to +85°C (-40° to +185°F)
Storage Temperature	-55° to +125°C (-67° to +257°F)
Compensated Temperature	0° to +50°C (32° to +122°F)
Shock	MIL-STD-202, Method 213 (50 g, half sine, 6 msec)
Vibration	MIL-STD-202, Method 204 (10 to 2000 Hz at 10 g)
Media	P2 port Wetted materials; polyester housing, epoxy adhesive, silicon, borosilicate glass, and silicon-to-glass bond*
	P2 port Absolute only: Factory sealed vacuum reference, no connection
	P1 port Dry gases only

\*Liquid media containing some highly ionic solutions could potentially neutralize the chip-to-glass tube bond.

Catalog Listing	Pressure Range psi	Overpressure psi Max.	Linearity, % Span	
			P2 > P1 Max.	P2 < P1 Max.
185PC05DT	0-5	20	±2.00	±1.00
185PC15DT	0-15	45	±2.00	±1.00
185PC30DT	0-30	60	±1.50	±0.75

#### 186PC SERIES ORDER GUIDE, BI-DIRECTIONAL TYPE, P2-P1

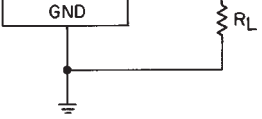
Catalog Listing	Pressure Range psi	Overpressure psi Max.	Linearity, % Span	
			P2 > P1 Max.	P2 < P1 Max.
186PC03DT	±2.5	20	±2.00	±1.00
186PC05DT	±5.0	20	±2.00	±1.00
186PC15DT	±15	45	±2.00	±1.00

#### 185PC SERIES ORDER GUIDE, ABSOLUTE TYPE

Catalog Listing	Pressure Range psi	Overpressure psi Max.	Linearity, % Span	
			P2 > P1 Max.	P2 < P1 Max.
185PC15AT	0-15	45	---	±1.00
185PC30AT	0-30	60	---	±0.75

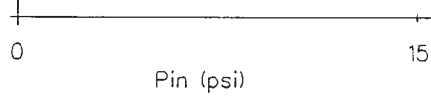
#### HOW TO ORDER

Catalog listings in the order guide are shown with mounting version **T** (terminal mount). **H** (housing mount) also available. Contact 800 number.



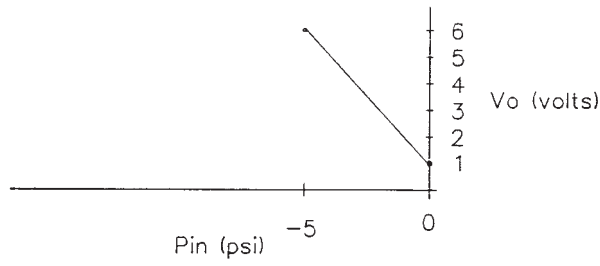
**NOTES**

1. Terminals are labeled on the sensor.
2. Input and output share a common ground.
3.  $R_L$  must be greater than or equal to 3000 ohms.



**Vacuum Gage**

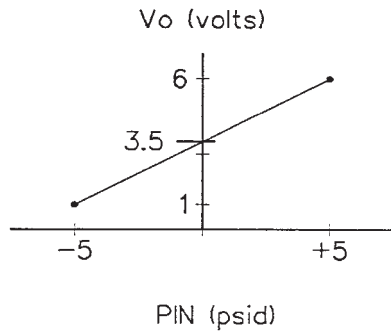
Example: 184PC05GT where  $P_2 = P_{IN}$   $P_1 = \text{Ambient}$



Amplified

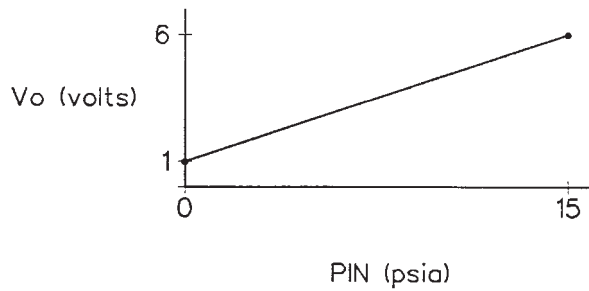
**Bi-directional**

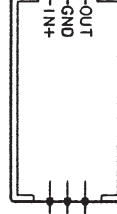
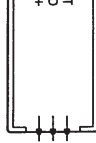
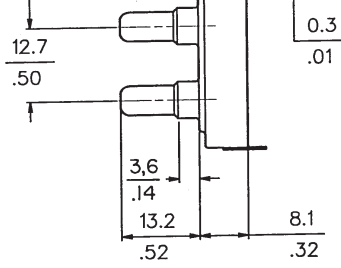
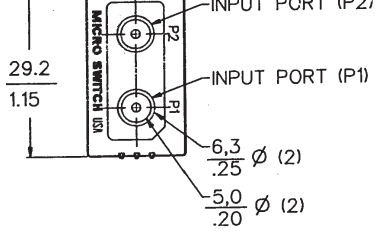
Example: 186PC05DH where  $P_{IN} = P_2 - P_1$



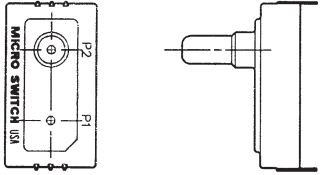
**Absolute**

Example: 185PC15AP where  $P_1 = P_{IN}$   $P_2 = \text{Factory sealed vacuum}$

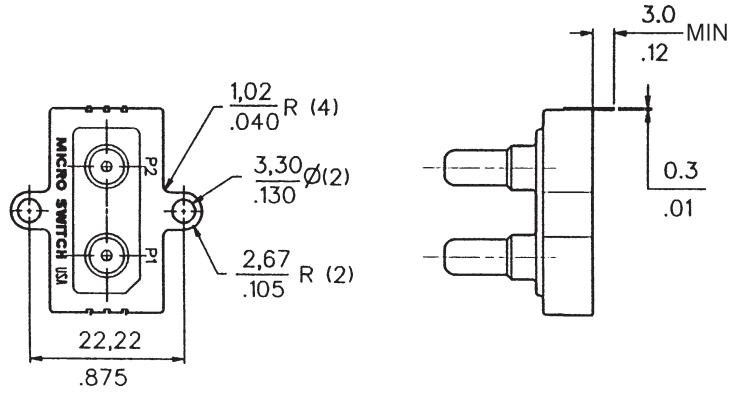




**(Gage "G" Housing)**



**Housing Mount**



## X-ON Electronics

Largest Supplier of Electrical and Electronic Components

*Click to view similar products for [Board Mount Pressure Sensors](#) category:*

*Click to view products by [Honeywell](#) manufacturer:*

Other Similar products are found below :

[80527-25.0H2-05](#) [80541-B00000150-01](#) [80541-B00000200-05](#) [80554-00700100-05](#) [80568-00300050-01](#) [81618-B00000040-01](#) [81739-B00000900-01](#) [81807-B00000020-01](#) [81808-B00000150-14](#) [82903-B00000020-01](#) [93.631.4253.0](#) [93.731.4353.0](#) [93.932.4553.0](#) [136PC150G2](#) [136PC15A1](#) [142PC95AW71](#) [142PC05DW70](#) [MPXV2202DPT1](#) [15PSI-G-4V](#) [1805-01A-L0N-B](#) [2000317-1](#) [26PCBKT](#) [26PCCFA6D26](#) [26PCCFS2G](#) [26PCCVA6D](#) [93.632.7353.0](#) [93.731.3653.0](#) [93.931.4853.0](#) [93.932.4853.0](#) [SCDA120-XSC05DC](#) [SP370-23-156-0](#) [185PC30DH](#) [192992-0059](#) [20INCH-G-MV-MINI](#) [26PCAFJ3G](#) [26PCAFS2G54](#) [26PCCEP5G24](#) [26PCJEU5G19](#) [30INCH-D1-MV-MINI](#) [ASCX15AN-90](#) [TSCSAAN001PDUCV](#) [DCAL401DN](#) [DCAL401GN](#) [XZ202798SSC](#) [XZ203676HSC](#) [SP370-25-116-0](#) [81717-00000050-05](#) [81794-B00001200-01](#) [HSCDLNN100PGAA5](#) [81618-B00000040-05](#)