

# MICRO SWITCH

A DIVISION OF HONEYWELL INTERNATIONAL COMPANY  
MILWAUKEE, WISCONSIN

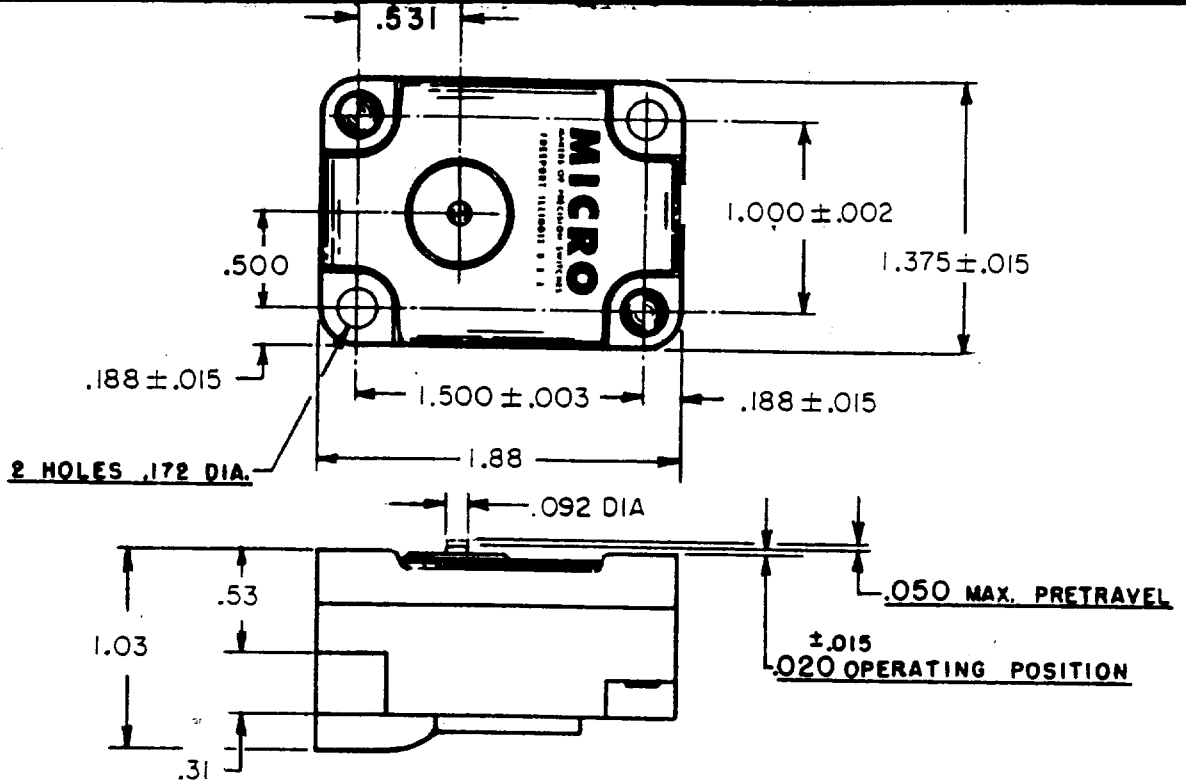
## SWITCH - BASIC

CATALOG LISTING

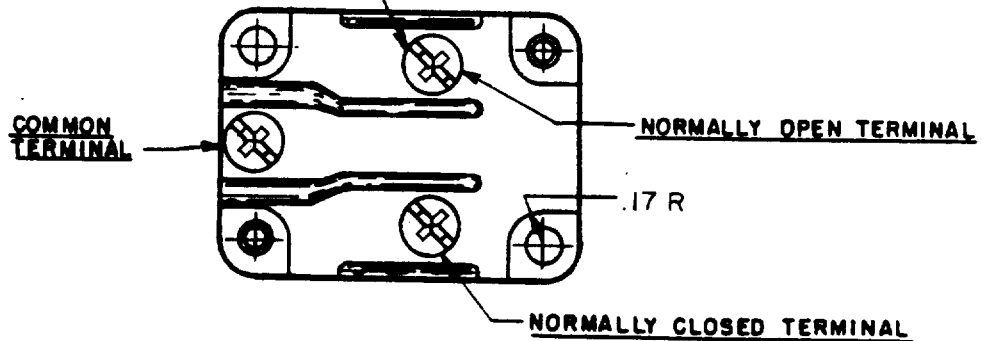
### 1MK1

FED. MFR. CODE 91829

THIS DRAWING COVERS A PROPRIETARY ITEM AND IS THE PROPERTY OF MICRO SWITCH, A DIVISION OF HONEYWELL. THIS DRAWING IS NOT TO BE COPIED OR USED WITHOUT THE APPROVAL OF MICRO SWITCH.



3X 8-32 UNC (.219) BINDING  
HEAD COMBINATION TERMINAL  
SCREW



**NOTE**

ONLY NO. 8 ROUND HEAD SCREWS AND SAE LIGHT SPRING WASHER SHOULD BE USED FOR MOUNTING SWITCH IN ORDER TO PROVIDE PROPER ELECTRICAL CLEARANCES.

**CHARACTERISTICS**

OPERATING FORCE ----- 14-22 OZ.  
RELEASE FORCE ----- 10 OZ. MIN.  
DIFFERENTIAL TRAVEL ----- .002-.0075  
OVERTRAVEL ----- .010 MIN.

**ELECTRICAL DATA**

CONTACT ARRANGEMENT  
S. P. D. T.

**SCALE FULL**

DO NOT SCALE PRINT  
UNLESS OTHERWISE SPECIFIED:  
DIMENSIONS ARE IN INCHES  
TOLERANCES ARE  
FRACTIONS ± 1/64  
DECIMALS ± .010  
ANGLES ±  
WEIGHT

DRAWN R. G. C. 30, JULY 54 CHECK J.S. PEG. 65  
 REVISIONS  
 ISSUE X2  
 DRAWING NUMBER M  
 1MK1  
 REPLACES 30, JULY '54  
 20 OCT 54

## X-ON Electronics

Largest Supplier of Electrical and Electronic Components

*Click to view similar products for [Switch Contact Blocks / Switch Kits](#) category:*

*Click to view products by [Honeywell](#) manufacturer:*

Other Similar products are found below :

[61-8770.17](#) [M2SA-7010](#) [704.905.2](#) [704.907.1](#) [704.915.5](#) [704.942.5](#) [A01RTC8](#) [A02504](#) [A02512](#) [A3KJ-7010](#) [BS001](#) [190-17504-003](#) [190-17505-001](#) [190-17508-001](#) [190-17509-002](#) [190-17509-006](#) [A02506](#) [190-17501-001](#) [190-17506-001](#) [190-17509-005](#) [GLZ304](#) [51401](#) [BS010](#) [BST-D](#) [HW-S01](#) [XESP2021](#) [61-8102.02](#) [704.908.1](#) [704.908.5](#) [704.915.3](#) [HA-C2V](#) [S4](#) [LSZ3H](#) [704.918.4](#) [5.00.100.105/0000](#) [A3CA-7121](#) [84-8511.6320](#) [704.902.1](#) [A0310Y](#) [51-971.F22](#) [5.05.510.632/0000](#) [190-17502-003](#) [190-17507-002](#) [190-17500-002](#) [190-17500-006](#) [190-17510-001](#) [1.20.119.002/0000](#) [2MN6-1PA224](#) [Kit05-Keylocks](#) [Kit14-Switch Assortment](#)