

MICRO SWITCH

A DIVISION OF HONEYWELL-INTERNATIONAL CORPORATION
 ST. LOUIS, MISSOURI

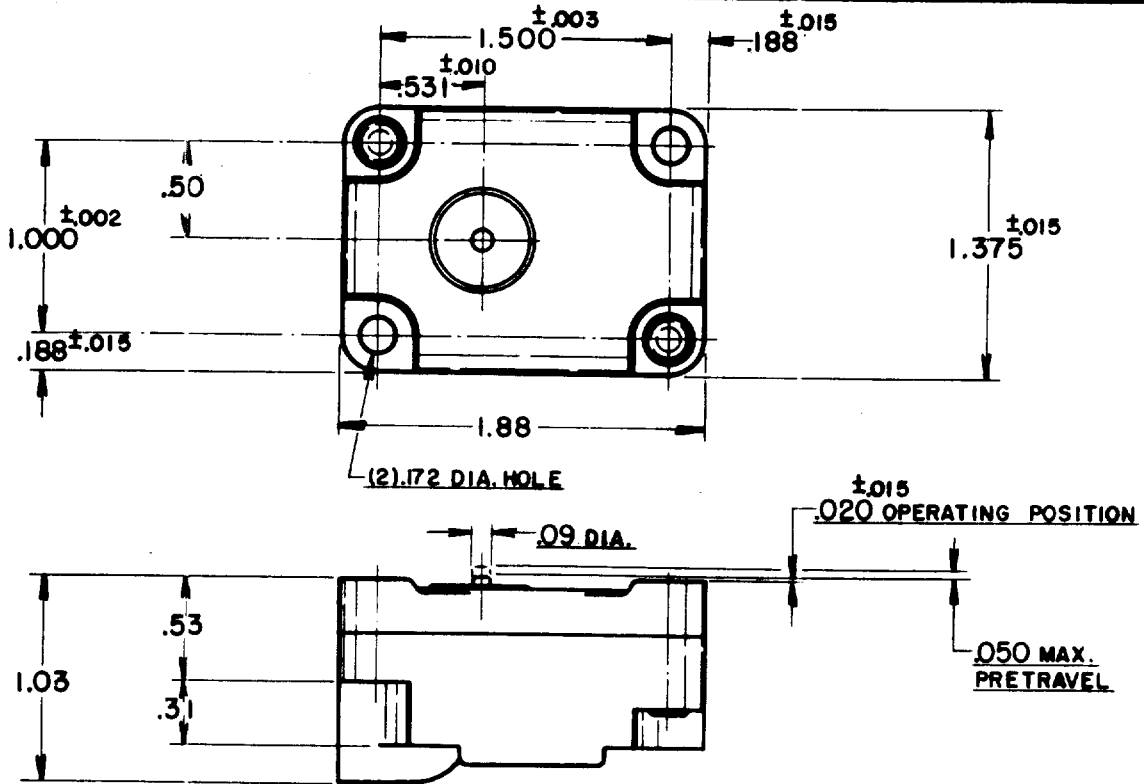
FED. MFR. CODE 91929

SWITCH - BASIC

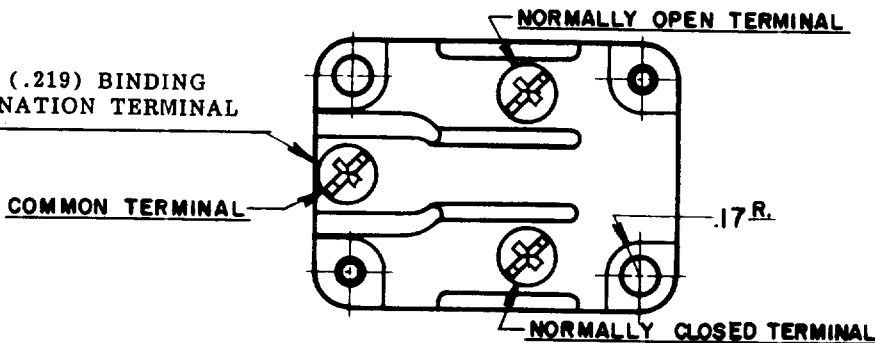
CATALOG LISTING

1MK5

IMK5
 ISSUE 2



3X 8-32 UNC (.219) BINDING
 HEAD COMBINATION TERMINAL
 SCREW



NOTE -

1- ONLY NO. 8 ROUND HEAD SCREWS AND SAE LIGHT SPRING WASHER SHOULD BE USED FOR MOUNTING SWITCH IN ORDER TO PROVIDE PROPER ELECTRICAL CLEARANCES.

THIS DRAWING COVERS A PROPRIETARY ITEM AND IS THE PROPERTY OF MICRO SWITCH, A DIVISION OF HONEYWELL. THIS DRAWING IS NOT TO BE COPIED OR USED WITHOUT THE APPROVAL OF MICRO SWITCH.

CHARACTERISTICS	ELECTRICAL DATA		SCALE FULL
OPERATING FORCE-----10 OZ. MAX.	CONTACT ARRANGEMENT	BREAK DISTANCE	DO NOT SCALE PRINT
DIFFERENTIAL TRAVEL-----.002-.0075	S. P. D. T.	.020 MIN.	UNLESS OTHERWISE SPECIFIED DIMENSIONS ARE IN INCHES TOLERANCES ARE:
RELEASE FORCE-----4 OZ. MIN.			
OVERTRAVEL-----0.010 MIN.			ONE PLACE (.0) ±.030 TWO PLACE (.00) ±.015 THREE PLACE (.000) ±.005 ANGLES ±
			WEIGHT

IMK5

M

DRAWING NUMBER

4

ISSUE

REVISIONS

A 001012Z

R. G. C. 7 JAN. 56

B 173287-6

J. A. L. 20 OCT 93

VHS 7 JAN. 56

CHECK

VHS 7 JAN. 56

CHECK

VHS 7 JAN. 56

CHECK

VHS 7 JAN. 56

CHECK

VHS 7 JAN. 56

74-86

DRAWN

R. G. C. 6, JAN. '56

X-ON Electronics

Largest Supplier of Electrical and Electronic Components

Click to view similar products for [Basic / Snap Action Switches](#) category:

Click to view products by [Honeywell](#) manufacturer:

Other Similar products are found below :

[5SM901-S12](#) [5SM9-S12N195](#) [01.098.1358.1](#) [602EN532](#) [602EN535-RB](#) [602HE5-RB1](#) [604HE162](#) [604HE223-6B](#) [624HE17-RB](#) [6HM82](#)
[6HM89](#) [6SE1](#) [6SX1-H58](#) [70500216](#) [70599106](#) [MBD5B1](#) [MBH2731](#) [73-316-0012](#) [EXD-AR20](#) [79211923](#) [79218589](#) [7AS12](#)
[MIL30126AB6BBMD4A12XAU](#) [ML-1155](#) [ML-1376](#) [831010C3.0](#) [831090C2.EL](#) [83131904](#) [84212012](#) [8AS239](#) [8HM73-3](#) [8SX26-H33](#)
[914CE1-6G](#) [PL-100](#) [11SM1077-H4](#) [11SM1077-H58](#) [11SM1-TN107](#) [11SM405](#) [11SM8423-H2](#) [11SX37-T](#) [11SX48-H58](#) [11SM2442-T](#)
[11SM76-T](#) [11SM77-H58](#) [11SM77-T](#) [11SM863-T](#) [11SM866](#) [A7CN-1M-1-LEFT](#) [A831700C7.0](#) [121EN187-R](#)