

SWITCH-UNITS

CATALOG LISTING
2D SERIES

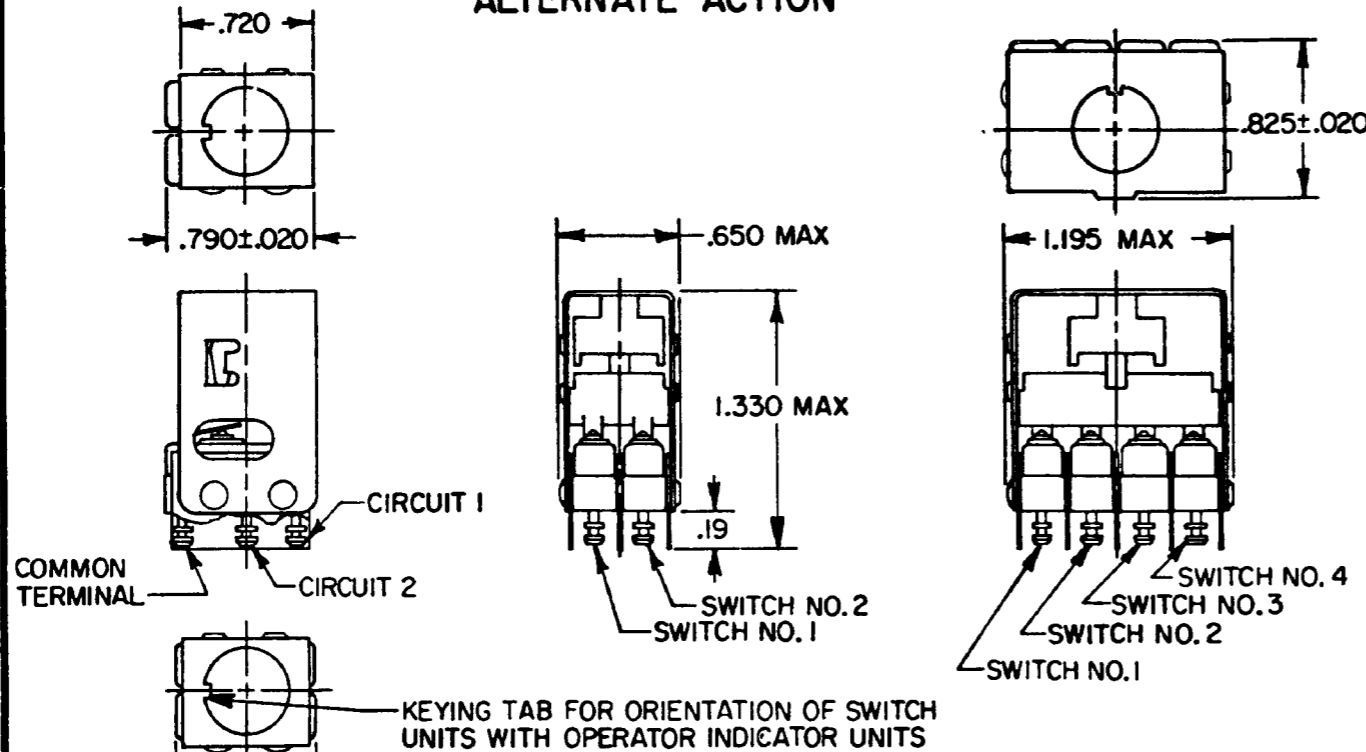
CHART 1

THIS DRAWING COVERS A PROPRIETARY ITEM AND IS THE PROPERTY OF MICRO SWITCH, A DIVISION OF HONEYWELL. THIS DRAWING IS NOT TO BE COPIED OR USED WITHOUT THE APPROVAL OF MICRO SWITCH.

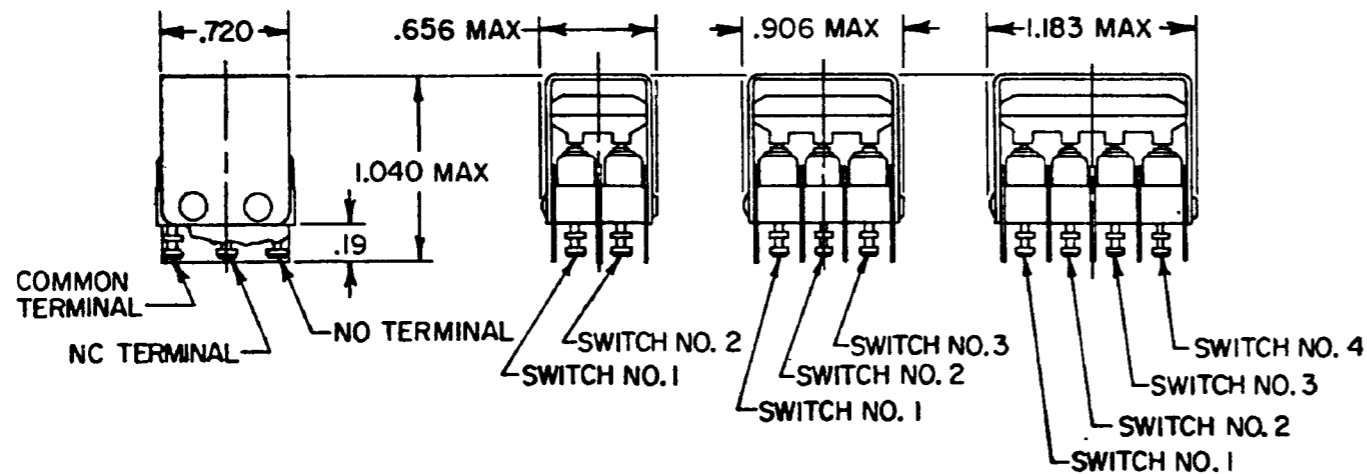
D = DUMMY
 G = GOLD
 S = SILVER

	MOMENTARY	ALTERNATE ACTION	BASIC SWITCH CONTACT MATERIAL			
			1	2	3	4
2D1		(A)	G	G		
2D2		(A)	S	S		
2D4			G	G	G	
2D5			S	S	S	
2D8			G	G	G	G
2D9		(A)	S	S	S	S
(A)			S	S	S	G
(A)		2D 25	G	G		
(A)			G	D		
(C)		(A)	G	S		
		2D 32	G	G	G	G
		2D 33	S	S	S	S
		(A)	G	G	G	G
		2D 118	S	D		
(A)		2D 26	S	S		
2D340			S	D		
		(A)	S	S	S	S
		(F)	G	G	G	D
(A)		(A)	S	S	S	S
2D113		(A)	G	D		
(A)		(A)	S	S		
		(F)	S	D		
		2D 302	S	D		
		(A)	S	S		
(E)			G	G	G	G
		(A)	S	S	S	S
		(A)	S	S		
(B)			S	S	S	S
		(A)	G	G	G	G
(A)			S	S	S	
(F)			G	S	S	
		(A)	S	S		
(A)			S	S		
		(A)	G	G	G	G

ALTERNATE ACTION



MOMENTARY



NOTES

- 1 TERMINALS ARE PLATED FOR SOLDERING
- 2 SWITCHES DO NOT NECESSARILY OPERATE SIMULTANEOUSLY

CATALOG LISTING
2D SERIES CHART 1
 PAGE 1 OF 1
 RELEASE NO. PR-3105 REPLACES
 ISSUE **M**
 64
 CHECK
 REVISIONS
 A CO-82436 JALA 7 FEB 96
 B CO-83029 CSL 28 AUG 96
 C CO-85966 CSL 17 MAR 97
 D PR22800 JAF 21 MAY 97
 E CO-92836 CSL 18 AUG 98
 F CO-95794 CSL 28 JAN 00
 G 203864 CSL 5 SEP 01
 DRAWN
 RASTER
 T S K 28 APR 81
 CHECK C E B I MAY 81

THIRD ANGLE PROJECTION

 SCALE FULL
 DO NOT SCALE PRINT
 TOLERANCES
 APPLY TO DESIGN UNITS CONVERSIONS ARE ONLY FOR REFERENCE UNLESS NOTED TOLERANCES ARE ±

	DIM.	TOL.	DIM.	TOL.
	mm	mm/in	in	mm/in
NO PLACES	X	1/64	X	0.010
ONE PLACE	X	0.010	X	0.010
TWO PLACES	X	0.005	X	0.005
THREE PLACES	X	0.0005	X	0.0005

 ANGLE
 IN METRIC
 DESIGN UNITS IN METRIC US CUSTOMARY
 WEIGHT

X-ON Electronics

Largest Supplier of Electrical and Electronic Components

Click to view similar products for [Pushbutton Switches](#) category:

Click to view products by [Honeywell](#) manufacturer:

Other Similar products are found below :

[8940K2012](#) [LW1L-M1C10V-A](#) [LW1L-M1C70-A](#) [LW2L-A1C20M-GD](#) [LW2L-M1C20M-A](#) [60324L](#) [M22-D-R-GB0/K11](#) [M7E-HRN2](#)
[67021K512](#) [67081K512X](#) [701PB580](#) [7190K101](#) [7199K101](#) [810K12910](#) [810KSV30B](#) [MML21EA2ADK](#) [MML21KA3ABK](#)
[MML23KA3AC05K-001](#) [MML23KW3AA01W](#) [8418K2](#) [8442K3](#) [8450K1](#) [860K11911T01A](#) [861901](#) [861K11911T01A07](#)
[861K13810T00A14](#) [861K13911](#) [8646AB6X718UL](#) [8646ABUL](#) [9001KXRK](#) [907AYY100](#) [PMHD155A1](#) [95-313.000](#)
[9533CD4+U574+U4922](#) [95-414.000](#) [99-450.837](#) [99-453.837](#) [PV3H2B0NN-341](#) [1203MRA](#) [A22NZBGANGA](#) [A22NZBMMNGA](#)
[A22NZBNANGA](#) [A22NZMPATRA](#) [A2PMA1X03EC56](#) [A3A-5123-02](#) [A3A-7140](#) [A3A-7310](#) [A3A-7340](#) [A3U-TMW-A2C-5M](#) [A595](#)