

MICRO SWITCH

FREEPORT ILLINOIS, U.S.A
A DIVISION OF HONEYWELL INC.
FED. MFG. CODE 91929

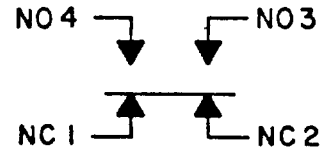
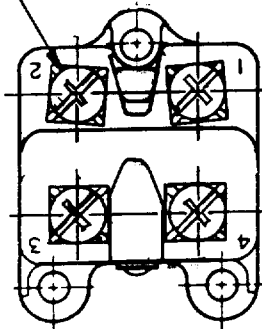
SWITCH - BASIC

CATALOG LISTING

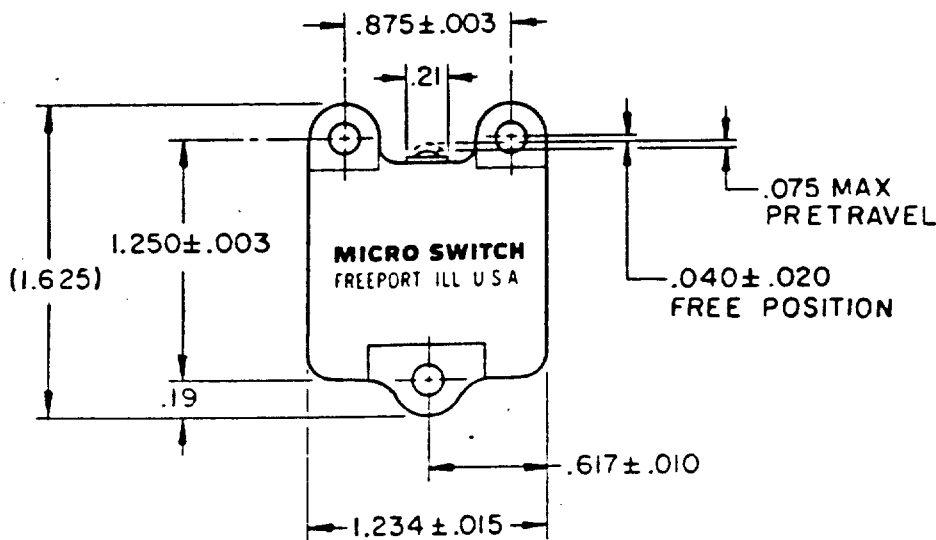
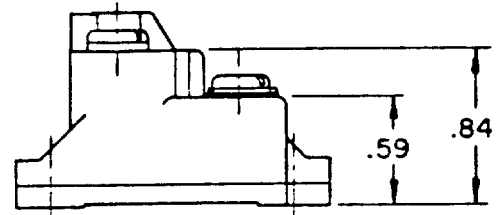
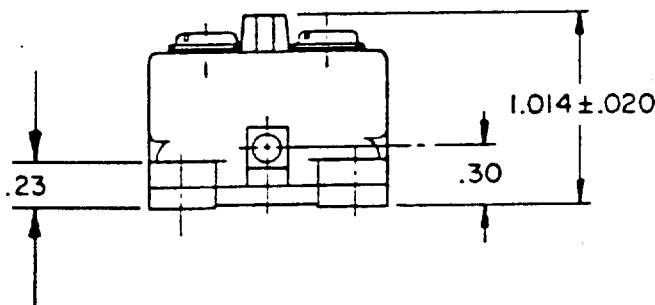
2MN8

5

4X 8-32 UNC PAN HEAD SCREW AND
CLAMPING PRESSURE PLATE



CIRCUIT DIAGRAM

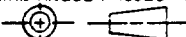


NOTE

1 - MOUNTING HOLES WILL ACCEPT NO. 4 SCREWS ON $.875 \pm .003$ AND $1.250 \pm .003$ CENTERS

THIS DRAWING COVERS A PROPRIETARY ITEM AND IS THE PROPERTY OF MICRO SWITCH, A DIVISION OF HONEYWELL. THIS DRAWING IS NOT TO BE COPIED OR USED WITHOUT THE APPROVAL OF MICRO SWITCH.

THIRD ANGLE PROJECTION



CHARACTERISTICS	
OPERATING FORCE	11 OZ MAX
RELEASE FORCE	3 OZ MIN
DIFFERENTIAL TRAVEL	.005-.009
OVERTRAVEL	.017 MIN
RELEASE TRAVEL	.022 MIN

ELECTRICAL DATA	
CONTACT ARRANGEMENT SEE CIRCUIT DIAGRAM	
10A 125, 250 OR 480 VAC 1/2 HP 125 VAC, 1 HP 250 VAC PILOT DUTY : 600 VAC MAX	

SCALE	FULL	DO NOT SCALE PRINT
UNLESS OTHERWISE SPECIFIED TOLERANCES ARE		
ONE PLACE	(.0)	± .030
TWO PLACE	(.00)	± .015
THREE PLACE	(.000)	± .005
ANGLES		±
WEIGHT		

DRAWING NUMBER: 2MN8
 M
 1314
 ISSUED
 CHECK
 REVISIONS
 A CO 65814-D SAV 27 JUN 90
 B CO 77031 JDB 22 DEC 93
 CHECK
 SAV 27 JUN 90
 DRAWN
 FO-52848-B

X-ON Electronics

Largest Supplier of Electrical and Electronic Components

Click to view similar products for [Limit Switches](#) category:

Click to view products by [Honeywell](#) manufacturer:

Other Similar products are found below :

[5ML1-E1](#) [5ML31](#) [LZG1](#) [LZL1-6C](#) [622EN114-R](#) [622EN18-6](#) [622EN224-6B](#) [622EN230](#) [622EN237-R](#) [622EN69-3](#) [622EN85-RB](#) [MA-10019](#)
[6PA109](#) [7LS51](#) [83547001](#) [83725002](#) [83830001](#) [83840701](#) [83841001](#) [83881140](#) [8AS42](#) [8LS10](#) [8LS125-4PG](#) [8LS152-4PGN20](#) [914CE16-](#)
[3A](#) [914CE3-3L1](#) [915PA10](#) [91MCE16-P2O](#) [924CE16-Y3](#) [924CE1-S6](#) [924CE1-T25A](#) [924CE1-T3](#) [924CE1-T9A](#) [924CE2-T9](#) [924CE31-Y20-](#)
[X5](#) [924CE31-Y3L1](#) [GL-10054](#) [GLAB26J2B](#) [GLDB03C-6](#) [GLDC05C](#) [GLZ324](#) [PS21R-NT11N7-YK0](#) [H3141CAKAA](#) [RDI-G-L5B](#) [DD-](#)
[10000](#) [DT-2R3-A7](#) [14CE16-3N28](#) [14CE18-N15](#) [151ML3-E1](#) [E3102BAAAA](#)