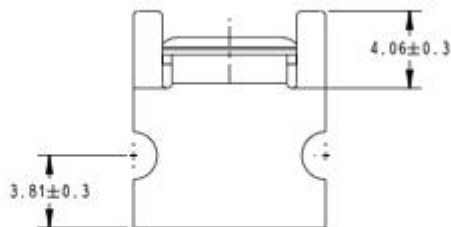
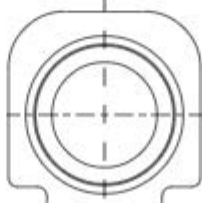


HONEYWELL PART NO.	REV	MATERIAL
50020948-001	B	
50020948-002	A	

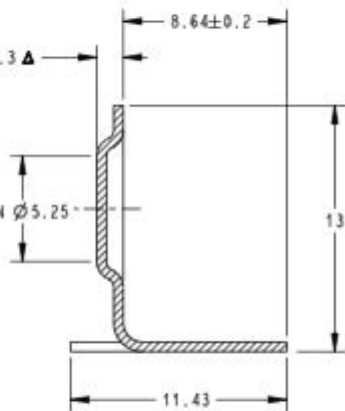


A

1.4 ± 0.3



A

MIN \varnothing 5.25

SECTION A-A

1. CONTROL PLAN FEATURE: 1 PLACE, DENOTED BY TRIANGLE (Δ). THIS DIMENSION IS CRITICAL TO THE FORM, FIT, OR FUNCTION OF THE PART IN THE ASSEMBLY, AND THE SUPPLIER SHOULD ENSURE THE CONFORMANCE TO SPECIFICATION OF THESE DIMENSIONS THROUGH THE CONTROL PLAN FOR THIS PART. SUPPLIER MUST ENSURE DEFECTS PER LOT DO NOT EXCEED 233 PPM.

MATERIAL: CRS 1050/1075, .5 THICK, AUSTEMPER HEAT TREATED TO HRC 40-50. BRIGHT TIN PLATE 2.54 MICROMETER (100 MICROINCHES) MIN.

3. MUST BE ROHS COMPLIANT.

4. TAPE AND REEL PACKAGED.

MATERIAL: CRS 1050/1075, .5 THICK, AUSTEMPER HEAT TREATED TO HRC 40-50. PLATING: 2.54 MICROMETER MIN (100 MICROINCHES) OF MATTE TIN OVER 2.54 MICROMETER MIN (100 MICROINCHES) OF COPPER.

<input type="checkbox"/>	MAT'L	<input type="checkbox"/>	MAT'L SPEC.
	SEE TAB	{	}
OR		{	}

FUNCTIONAL DIMENSIONING:

ALL DIMENSIONED AND UNDIMENSIONED GEOMETRY AND TOLERANCING ON THIS DRAWING IS DEFINED AND CONTROLLED BY THE DATABASE FILE. KEY INFORMATION IS REPRESENTED BY THIS DRAWING CONTAINING FUNCTIONAL DIMENSIONS.

CONTROLLED BY DATABASE FILE:

50020948-001.prt

FIRST USED ON REM5000

STRETCHS ARE IN:	THIRD ANGLE PROJECTION
<input type="checkbox"/> INCHES	
<input checked="" type="checkbox"/> MILLIMETERS	

<input type="checkbox"/> INDICATES DECREASING DIMENSION	<input type="checkbox"/> INDICATES INCREASING DIMENSION
- TOLERANCE UNLESS NOTED -	
MACHINED Δ 5°	FORMED Δ 5°
MILLIMETERS	INCHES

OVER	TO E	INCLUDING	
6	TO 18	AS 1	.0 ± .02
6	TO 18	AS 2	.00 ± .01
30	TO 100	AS 3	.000 ± .010
100	TO 300	AS 4	
300	TO 1000	AS 5	

DES. P. KACHLE	4-04-07
DES. J. RAJECKY	
HEAT ASS'Y	
50019749	
REFERENCE	
REV NO.	GS603886
HONEYWELL CONFIDENTIAL AND PROPRIETARY	SIZE

SCALE 5:1	SHEET 1 OF 1
PRO-E REVTS	ARCHIVE REF. NO.

SCALE 5:1	SHEET 1 OF 1
PRO-E REVTS	ARCHIVE REF. NO.

SCALE 5:1	SHEET 1 OF 1
PRO-E REVTS	ARCHIVE REF. NO.

SCALE 5:1	SHEET 1 OF 1
PRO-E REVTS	ARCHIVE REF. NO.

REV.	DATE	E.O.	REV.	DATE	E.O.
C	11-24-08	0046291			
B	11-14-07	0035387			
A	5-4-07	0030495			

DIMENSIONS & TOLERANCES PER ANSI Y14.3M-1994 & EEC ENGINEERING STANDARDS

ENVIRONMENTAL & COMBUSTION CONTROLS
GOLDEN VALLEY, MN

NAME
BATTERY TERMINAL

DRAWING NO.
50020948

REV.
C

SCALE 5:1
SHEET 1 OF 1
PRO-E REVTS
ARCHIVE REF. NO.

X-ON Electronics

Largest Supplier of Electrical and Electronic Components

Click to view similar products for [Board Mount Hall Effect/Magnetic Sensors](#) category:

Click to view products by [Honeywell](#) manufacturer:

Other Similar products are found below :

[HGPRDT005A](#) [AH277AZ4-AG1](#) [AV-10448](#) [SS41C](#) [AH1894-Z-7](#) [TLE4917](#) [TLE4946-1L](#) [50017859-003](#) [TY-13101](#) [TLE4976L](#)
[A1308KUA-1-T](#) [SS85CA](#) [BU52002GUL-E2](#) [BU52003GUL-E2](#) [AH277AZ4-BG1](#) [TLE49614MXTSA1](#) [AH3376-P-B](#) [AH3382-P-B](#) [AH3377-](#)
[P-B](#) [AH211Z4-AG1](#) [AH3360-FT4-7](#) [TLE4941-1](#) [SS460S-100SAMPLE](#) [AH374-P-A](#) [TLE49595UFXHALA1](#) [SS460P-T2](#) [AH1913-W-7](#)
[AH3373-P-B](#) [TLE9852QXXUMA1](#) [MA732GQ-Z](#) [MA330GQ-Z](#) [TLE49421CHAMA2](#) [AH1903-FA-EVM](#) [AH8502-FDC-EVM](#)
[TLE4998S3XALA1](#) [TLE5011FUMA1](#) [TLE5027CE6747HAMA1](#) [TLE5109A16E1210XUMA1](#) [TLI4966GHTSA1](#) [TLI4906KHTSA1](#)
[MA710GQ-P](#) [S-57K1NBL2A-M3T2U](#) [S-57P1NBL9S-M3T4U](#) [S-576ZNL2B-L3T2U](#) [S-576ZNL2B-A6T8U](#) [S-57P1NBL0S-M3T4U](#) [S-](#)
[57A1NSL1A-M3T2U](#) [S-57K1RBL1A-M3T2U](#) [S-57P1NBH9S-M3T4U](#) [S-57P1NBH0S-M3T4U](#)