

MICRO SWITCH

A DIVISION OF HONEYWELL REGULATORY COMPANY
FREEPORT, ILLINOIS

FED. MFR. CODE 91929

SWITCH - ENCLOSED

CATALOG LISTING

51ML1

THIS DRAWING COVERS A PROPRIETARY ITEM AND IS THE PROPERTY OF MICRO SWITCH, A DIVISION OF HONEYWELL. THIS DRAWING IS NOT TO BE COPIED OR USED WITHOUT THE APPROVAL OF MICRO SWITCH.



ISSUE 4

51ML1

DRAWING NUMBER

REPLACES

ISSUE

CHECK

REVISIONS

CHECK

CHECK

CHECK

CHECK

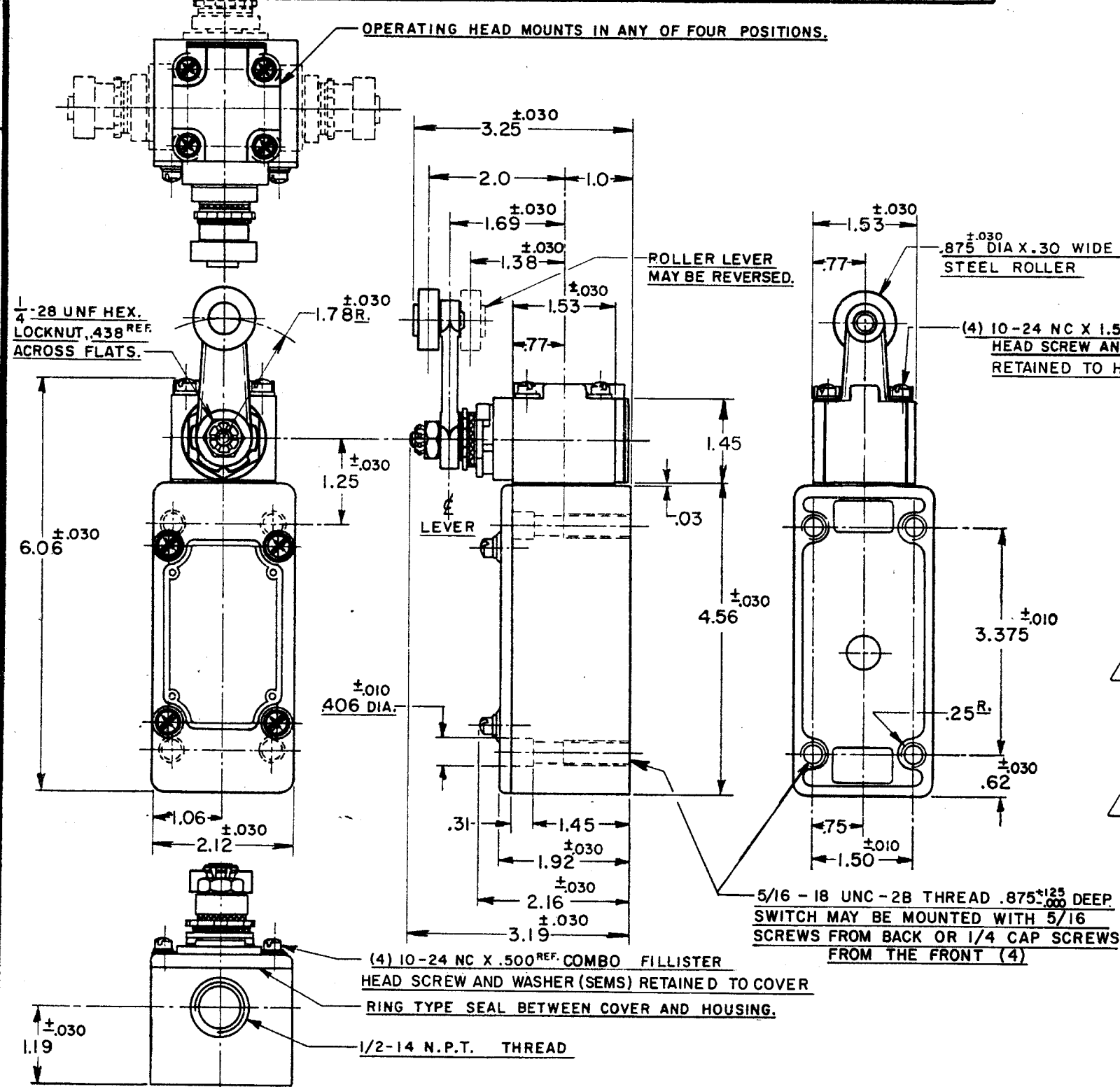
CHECK

CHECK

CHECK

DRAWN

74-983



NOTES

- 1 - IT IS ESSENTIAL TO PREVENT ENTRANCE OF HARMFUL AGENTS THRU THE CONDUIT OPENING TO OBTAIN THE FULL BENEFIT OF THE SEALED CONSTRUCTION PROVIDED IN THIS UNIT
- 2 SWITCH IS ASSEMBLED FOR ACTUATION IN EITHER DIRECTION
- 3 - LEVER MAY BE POSITIVELY LOCKED AT INTERVALS OF APPROX 0.4° (870 POSITIONS)
- 4 - LEVER MAY BE ADJUSTED TO ACTUATE THE SWITCH IN THE CLOCKWISE DIRECTION ONLY, THE COUNTER-CLOCKWISE DIRECTION ONLY, OR IN BOTH DIRECTIONS
- 5 TO CONVERT SWITCH FOR ACTUATION IN EITHER CLOCKWISE OR COUNTER-CLOCKWISE DIRECTION ONLY, REMOVE THE HEAD AND SLIDE THE CAM TOWARD THE REAR OF THE HEAD SUFFICIENTLY TO DISENGAGE FROM THE FLATS ON THE SHAFT. ROTATE THE CAM 90° IN THE OPPOSITE DIRECTION OF THE ACTUATION DESIRED AND RE-ENGAGE THE CAM WITH THE FLATS ON THE SHAFT

CHARACTERISTICS

OPERATING FORCE	3 LBS. MAX.
FULL OVERTRAVEL FORCE	4 LBS. MAX.
RELEASE FORCE	1/4 LB. MIN.
PRETRAVEL	12° MAX.
DIFFERENTIAL TRAVEL	4° MAX.
OVERTRAVEL	60° MIN.

ELECTRICAL DATA

CONTACT ARRANGEMENT	S. P. D. T.
20 A-120, 240, 480 OR 600 VAC; 3/4 HP-120 VAC, 1 1/2 H.P.-240 VAC; 1/2 A-115 VDC; 1/4 A-230 VDC PILOT DUTY RATING: 600 VAC MAX.	

SCALE 1/2 TO 1

DO NOT SCALE PRINT

UNLESS OTHERWISE SPECIFIED DIMENSIONS ARE IN INCHES

TOLERANCES ARE:

ONE PLACE	(.0)	±.030
TWO PLACE	(.00)	±.015
THREE PLACE	(.000)	±.005
ANGLES		±

WEIGHT

SWITCH-BASIC REPLACEMENT - IMKI

ⓓ



A	CO 8520	R. L. Z.	12 OCT. 56
B	CORR.	L. C. S.	11 OCT. 57
C	CO11247	G. C. H.	21 FEB. 58
D	CO12789	M. B. F.	14 MAY 58
E	CO18841	H. B. W.	20 JAN. 65
F	CO20578	M. B. F.	30 NOV. 65
G	CO26064	M. B. S.	25 JUNE 69
H	CO52194	G. J. W.	22 SEP. 83
J	CO55051-B	J. A. P.	14 DEC. 84
K	CO74287	G. J. W.	22 APR. 93

DRAWN R. L. Z. 12 OCT. 56

X-ON Electronics

Largest Supplier of Electrical and Electronic Components

Click to view similar products for [Limit Switches](#) category:

Click to view products by [Honeywell](#) manufacturer:

Other Similar products are found below :

[5ML1-E1](#) [5ML31](#) [LZG1](#) [LZL1-6C](#) [622EN114-R](#) [622EN18-6](#) [622EN224-6B](#) [622EN230](#) [622EN237-R](#) [622EN69-3](#) [622EN85-RB](#) [MA-10019](#)
[6PA109](#) [7LS51](#) [83547001](#) [83725002](#) [83830001](#) [83840701](#) [83841001](#) [83881140](#) [8AS42](#) [8LS10](#) [8LS125-4PG](#) [8LS152-4PGN20](#) [914CE16-](#)
[3A](#) [914CE3-3L1](#) [915PA10](#) [91MCE16-P2O](#) [924CE16-Y3](#) [924CE1-S6](#) [924CE1-T25A](#) [924CE1-T3](#) [924CE1-T9A](#) [924CE2-T9](#) [924CE31-Y20-](#)
[X5](#) [924CE31-Y3L1](#) [GL-10054](#) [GLAB26J2B](#) [GLDB03C-6](#) [GLDC05C](#) [GLZ324](#) [PS21R-NT11N7-YK0](#) [H3141CAKAA](#) [RDI-G-L5B](#) [DD-](#)
[10000](#) [DT-2R3-A7](#) [14CE16-3N28](#) [14CE18-N15](#) [151ML3-E1](#) [E3102BAAAA](#)