



MICRO SWITCH
 FREEPORT, ILLINOIS, U.S.A.
 A DIVISION OF HONEYWELL

FED. MFG. CODE 91929

PACKET

CATALOG LISTING
6 PA SERIES

CHART 3

THIS DRAWING COVERS A PROPRIETARY ITEM AND IS THE PROPERTY OF MICRO SWITCH, A DIVISION OF MINNEAPOLIS-HONEYWELL REGULATOR CO. THIS DRAWING IS NOT TO BE COPIED OR USED WITHOUT THE APPROVAL OF MICRO SWITCH.

M
6 PA SERIES
CHART 3

M

DRAWING NUMBER

*** 2**

ISSUE

CHECK

REVISIONS
 A CO26508
 M B S
 24 OCT 69

CHECK

BRJ 14 SEP 65

CHECK

LSD 14 SEP 65

CHECK

OMW 14 SEP 65

CHECK

OMW 14 SEP 65

CHECK

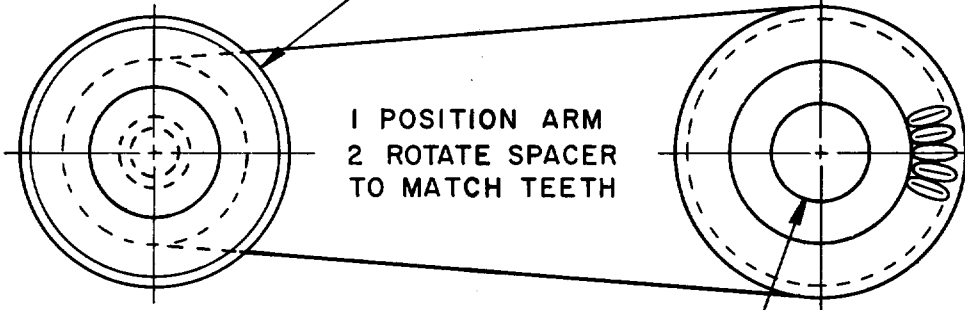
OMW 14 SEP 65

CHECK

REPLACES

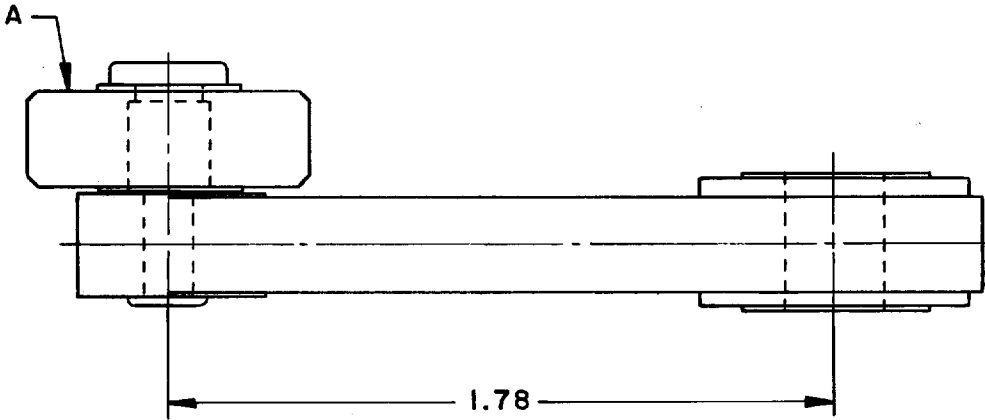
RELEASE NO. SR 11974

.875 ± .030 DIA X .300 WIDE ROLLER



1 POSITION ARM
 2 ROTATE SPACER
 TO MATCH TEETH

.265 DIA HOLE



1.78

CAT. LISTING	A
6 PA110	NYLON
6 PA118	STEEL

UNLESS OTHERWISE SPECIFIED
TOLERANCES ARE:
 ONE PLACE (.0) ±.030
 TWO PLACE (.00) ±.015
 THREE PLACE (.000) ±.005
 ANGLES ±
 RAW MATERIAL - COMMERCIAL STANDARD
 DIMENSIONS ARE IN INCHES AND ARE
 TO BE MET BEFORE PROTECTIVE
 COATINGS ARE APPLIED

FO-90378-008
 DRAWN

X-ON Electronics

Largest Supplier of Electrical and Electronic Components

Click to view similar products for [Switch Fixings](#) category:

Click to view products by [Honeywell](#) manufacturer:

Other Similar products are found below :

[893102000](#) [00-5150](#) [LZZ1A](#) [0098.9234](#) [M2PA-5011](#) [630155](#) [635401](#) [6PA113](#) [6PA147-E6](#) [6PA148-E6](#) [6PA32](#) [6PA9](#) [700106](#) [700109](#)
[700303A56](#) [700C1GRY](#) [700C2GRN](#) [704-6001](#) [704.960.9](#) [704.965.2](#) [704.965.6](#) [704.966.0](#) [7089-3](#) [710082-B11](#) [71M1048](#) [757200264](#)
[764300000](#) [MHU35](#) [MHU37](#) [807039-1](#) [825.003.011](#) [825.005.011](#) [825.053.011](#) [825.055.011](#) [826.000.071](#) [827.020.011](#) [827.400.021](#)
[835.900.023](#) [MML52C10C](#) [MML52E10C](#) [MML92HGH](#) [MML93K](#) [84211M02CNNS](#) [84212M02CNNS](#) [842.500.011](#) [843.000.011](#) [843187-000](#) [843487-000](#) [84-901](#) [84-902](#)