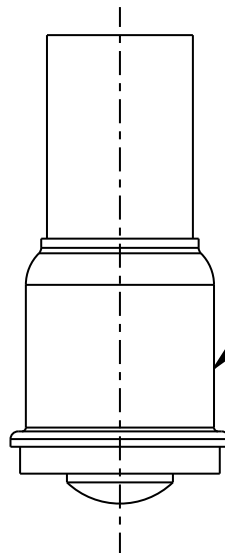


HONEYWELL
PART NUMBER
8PA81-TL
PRODUCT CODE:
SGL6275

| REV | DOCUMENT | CHANGED BY | CHECK |
|-----|----------|-------------|-------|
| D | 0055940 | SJK 24AUG09 | CMH |



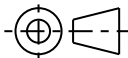
CENTER POSITIVE, TI 3/4, MIDGET FLANGE LED
COLOR:RED

NOTES:

1 - THIS PACKET CONSISTS OF A REPLACEMENT
LED TO BE USED WITH 4TL836-3D

A

A

| | | | | | | |
|---|--|-----|-----------|--|------------------|------------------|
| DESIGN UNITS: INCH TOLERANCES UNLESS NOTED: NO PLACES X ± .400 ONE PLACE .X ± .030 TWO PLACE .XX ± .015 THREE PLACE .XXX ± .005 FOUR PLACE .XXXX ± .0005 ANGLES X ± 3° | DRAWN | MJS | 07FEB07 | Honeywell | | |
| | CHECK | MJS | 19JUN09 | | | |
| THIRD ANGLE PROJECTION  | THIS DRAWING COVERS A PROPRIETARY ITEM AND IS THE PROPERTY OF HONEYWELL. THIS DRAWING IS NOT TO BE COPIED OR USED WITHOUT THE PERMISSION OF HONEYWELL. | | | TITLE PACKET | | |
| | | | | INTERPRET PER ASME Y14.5M-1994 OTHER HONEYWELL ENGINEERING STANDARDS MAY APPLY | SIZE A | TYPE I |
| | Pro/ENGINEER | 3D | SCALE 4:1 | SHEET 1 OF 1 | | |

X-ON Electronics

Largest Supplier of Electrical and Electronic Components

Click to view similar products for [Basic / Snap Action Switches](#) category:

Click to view products by [Honeywell](#) manufacturer:

Other Similar products are found below :

[5SM901-S12](#) [5SM9-S12N195](#) [01.098.1358.1](#) [602EN532](#) [602EN535-RB](#) [602HE5-RB1](#) [604HE162](#) [604HE223-6B](#) [624HE17-RB](#) [6HM82](#)
[6HM89](#) [6SE1](#) [6SX1-H58](#) [70500216](#) [70599106](#) [MBD5B1](#) [MBH2731](#) [73-316-0012](#) [EXD-AR20](#) [79211923](#) [79218589](#) [7AS12](#)
[MIL30126AB6BBMD4A12XAU](#) [ML-1155](#) [ML-1376](#) [831010C3.0](#) [831090C2.EL](#) [83131904](#) [84212012](#) [8AS239](#) [8HM73-3](#) [8SX26-H33](#)
[914CE1-6G](#) [PL-100](#) [11SM1077-H4](#) [11SM1077-H58](#) [11SM1-TN107](#) [11SM405](#) [11SM8423-H2](#) [11SX37-T](#) [11SX48-H58](#) [11SM2442-T](#)
[11SM76-T](#) [11SM77-H58](#) [11SM77-T](#) [11SM863-T](#) [11SM866](#) [A7CN-1M-1-LEFT](#) [A831700C7.0](#) [121EN187-R](#)