

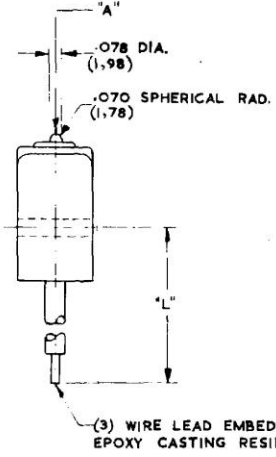
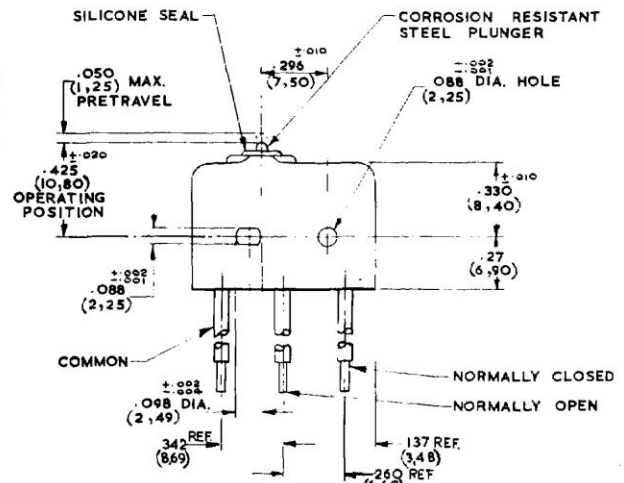
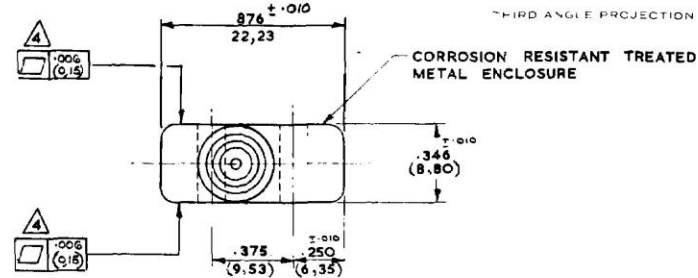
**Honeywell
MICRO**

SWITCH - BASIC

CATALOGUE LISTING
**9ISEI SERIES
CHART I.**

NOTE	CATALOGUE LISTING	REL. No.	ISSUE	DIMENSION 'L' MINIMUM	WIRE LEADS	WEIGHT PER FOOT OF SINGLE CONDUCTOR
	9ISEI	MS-1455	9	12.00 (304.80)	P.T.F.E. TO EL 1930 TYPE 'B' No. 20 (19 X .0076)	.11 OZS (3.12 GMS)
	9ISEI-3	MS-1455	9	36.0 (914.40)	P.T.F.E. TO EL 1930 TYPE 'B' No. 20 (19 X .0076)	.11 OZS (3.12 GMS)
	9ISEI-6	MS-1455	9	72.0 (1828.80)	P.T.F.E. TO EL 1930 TYPE 'B' No. 20 (19 X .0076)	.11 OZS (3.12 GMS)
	9ISEI-4	MS-10055	5	48.0 (1219.20)	P.T.F.E. TO EL 1930 Type 'B' No. 20 (19 x .0076)	.11 oz. (3.12 GMS.)
	9ISEI-12	MS-2050	9	144.0 (3657.60)	P.T.F.E. TO EL 1930 TYPE 'B' No. 20 (19 X .0076)	.11 OZS (3.12 GMS.)
⚠	9ISEI-3N62	MS-10059	6	36.0 (914.40)	P.T.F.E. TO EL 1930 Type 'B' No. 20 (19 x .0076)	.11 oz. (3.12 gms.)

**M 9ISEI SERIES
CHART I.**
 HONEYWELL MS-1453



- NOTE:**
- 1 - MOUNTING HOLES WILL ACCEPT .087 MAX. (2.20) DIA. PINS OR SCREWS ON .375 ±.002 (9.53) CENTRES.
 - 2 - ACTUATION IN LINE WITH ARROW "A" IS RECOMMENDED.
 - 3 - WEIGHT OF SWITCH ONLY IS .26 OZ. (7.37) GRAMMES. WEIGHT PER FOOT OF SINGLE CONDUCTOR - SEE CHART.
- ⚠ FLAT WITHIN .006 (0.15)
- 5 - METRIC DIMENSIONS IN BRACKETS ARE IN MILLIMETERS.
 - 6 - METRIC WEIGHTS IN BRACKETS ARE GRAMMES.

REV. SIGNS
 17 H.C.
 18 S.A.
 10 10.50
 9 9.00
 8 8.00
 7 7.00
 6 6.00
 5 5.00
 4 4.00
 3 3.00
 2 2.00
 1 1.00
 15 15.00
 14 14.00
 13 13.00
 12 12.00
 11 11.00
 10 10.00
 9 9.00
 8 8.00
 7 7.00
 6 6.00
 5 5.00
 4 4.00
 3 3.00
 2 2.00
 1 1.00

CHARACTERIST.	BRITISH	METRIC	ELECTRICAL DATA	SCALE 2:1
OPERATING FORCE	5-17 OZS	141.75 - 487.95 GMS	CONTACT ARRANGEMENT S.P.D.T.	DO NOT SCALE DRAWING
RELEASE FORCE	4 OZ. MIN.	113.40 GMS	BREAK DISTANCE .010 MIN. (.25)	UNLESS OTHERWISE SPECIFIED
RELEASE TRAVEL	.004 MIN.	.10	250 VAC..... 3 AMP	DIMENSIONS ARE IN INCHES
DIFFERENTIAL TRAVEL	.004 MAX.	.10	30 VOLTS D.C. RATING	TOLERANCES ARE
OVERTRAVEL	.003 MIN.	.07	INDUCTIVE.....SEA LEVEL..... 3 AMP	OF PLACE 1/20
			70,000 FT..... 2.5 AMP	TWO PLACE 1/100
			RESISTIVE.....SEA LEVEL..... 5 AMP	THREE PLACE 1/1000
			70,000 FT..... 5 AMP	ANGLES
			MAXIMUM INRUSH..... 24 AMP	WEIGHT SEE NOTE 3.

HONEYWELL LIMITED, Bracknell, Berks., & Newhouse, Lanarkshire.

X-ON Electronics

Largest Supplier of Electrical and Electronic Components

Click to view similar products for [Basic / Snap Action Switches](#) category:

Click to view products by [Honeywell](#) manufacturer:

Other Similar products are found below :

[5SM901-S12](#) [5SM9-S12N195](#) [01.098.1358.1](#) [602EN532](#) [602EN535-RB](#) [602HE5-RB1](#) [604HE162](#) [604HE223-6B](#) [624HE17-RB](#) [6HM82](#)
[6HM89](#) [6SE1](#) [6SX1-H58](#) [70500216](#) [70599106](#) [MBD5B1](#) [MBH2731](#) [73-316-0012](#) [EXD-AR20](#) [79211923](#) [79218589](#) [7AS12](#)
[MIL30126AB6BBMD4A12XAU](#) [ML-1155](#) [ML-1376](#) [831010C3.0](#) [831090C2.EL](#) [83131904](#) [84212012](#) [8AS239](#) [8HM73-3](#) [8SX26-H33](#)
[914CE1-6G](#) [PL-100](#) [11SM1077-H4](#) [11SM1077-H58](#) [11SM1-TN107](#) [11SM405](#) [11SM8423-H2](#) [11SX37-T](#) [11SX48-H58](#) [11SM2442-T](#)
[11SM76-T](#) [11SM77-H58](#) [11SM77-T](#) [11SM863-T](#) [11SM866](#) [A7CN-1M-1-LEFT](#) [A831700C7.0](#) [121EN187-R](#)