

MICRO SWITCH

FREEPORT, ILLINOIS, U S A

A DIVISION OF HONEYWELL

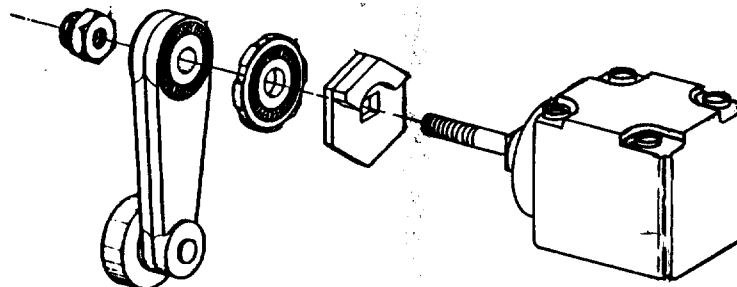
FED. MFG. CODE 91929

PACKET

CATALOG LISTING

9PA14

THIS DRAWING COVERS A PROPRIETARY ITEM AND IS THE PROPERTY OF MICRO SWITCH, A DIVISION OF HONEYWELL. THIS DRAWING IS NOT TO BE COPIED OR USED WITHOUT THE APPROVAL OF MICRO SWITCH.



ADJUSTABLE TO OPERATE CLOCKWISE, COUNTER-CLOCKWISE, OR IN BOTH DIRECTIONS.

AS FACTORY ASSEMBLED THE SWITCH MAY BE ACTUATED BY EITHER CLOCKWISE OR COUNTER-CLOCKWISE MOVEMENT OF THE ROLLER ARM.

TO CONVERT THE SWITCH FOR ACTUATION EITHER CLOCKWISE OR COUNTER-CLOCKWISE DIRECTION ONLY: SLIDE THE CAM TOWARD THE REAR OF THE HEAD SUFFICIENTLY TO DISENGAGE FROM THE FLATS ON THE SHAFT. ROTATE THE CAM 90° IN THE OPPOSITE DIRECTION OF THE ACTUATION DESIRED AND RE-ENGAGE THE CAM WITH THE FLATS ON THE SHAFT.

NOTE: WHEN SWITCH IS ADJUSTED FOR OPERATION IN ONE DIRECTION ONLY, THE ARM MAY BE MOVED TO THE FULL OVERTRAVEL POSITION IN THE OPPOSITE DIRECTION WITHOUT DAMAGING THE MECHANISM OR OPERATING THE SWITCH.

M		9PA14		REPLACES	
DRAWING NUMBER		SR-3843		RELEASE NO.	
2					
ISSUE					
CHECK					
REVISIONS					
A		8			
K A G		52194-D			
13 SEPT 83					
CHECK					
9 OCT 83					
CHECK					
DEC					
CHECK					
13 SEPT 83					
DRAWN					
K A G					
FO-82850					

X-ON Electronics

Largest Supplier of Electrical and Electronic Components

Click to view similar products for [Switch Fixings](#) category:

Click to view products by [Honeywell](#) manufacturer:

Other Similar products are found below :

[893102000](#) [00-5150](#) [LZZ1A](#) [0098.9234](#) [M2PA-5011](#) [630155](#) [635401](#) [6PA113](#) [6PA147-E6](#) [6PA148-E6](#) [6PA32](#) [6PA9](#) [700106](#) [700109](#)
[700303A56](#) [700C1GRY](#) [700C2GRN](#) [704-6001](#) [704.960.9](#) [704.965.2](#) [704.965.6](#) [704.966.0](#) [7089-3](#) [710082-B11](#) [71M1048](#) [757200264](#)
[764300000](#) [MHU35](#) [MHU37](#) [807039-1](#) [825.003.011](#) [825.005.011](#) [825.053.011](#) [825.055.011](#) [826.000.071](#) [827.020.011](#) [827.400.021](#)
[835.900.023](#) [MML52C10C](#) [MML52E10C](#) [MML92HGH](#) [MML93K](#) [84211M02CNNS](#) [84212M02CNNS](#) [84217A8.0LNOS](#) [842.500.011](#)
[843.000.011](#) [843187-000](#) [843487-000](#) [84-901](#)