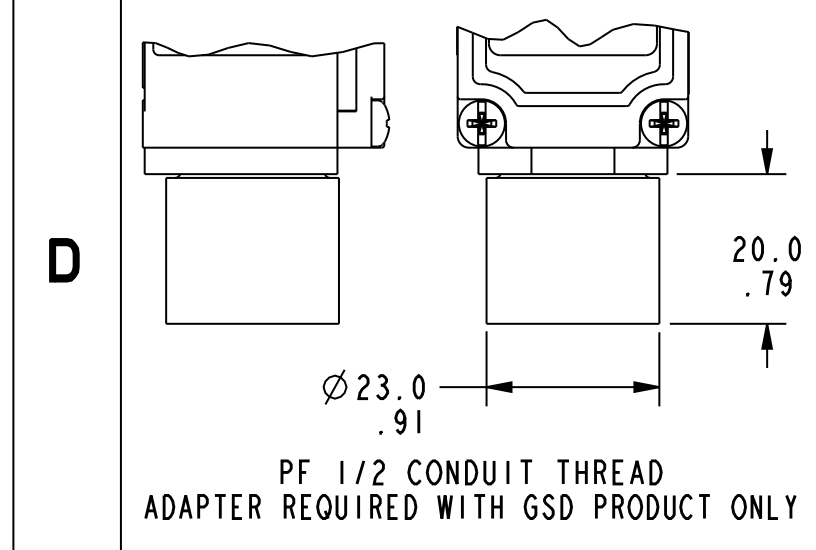
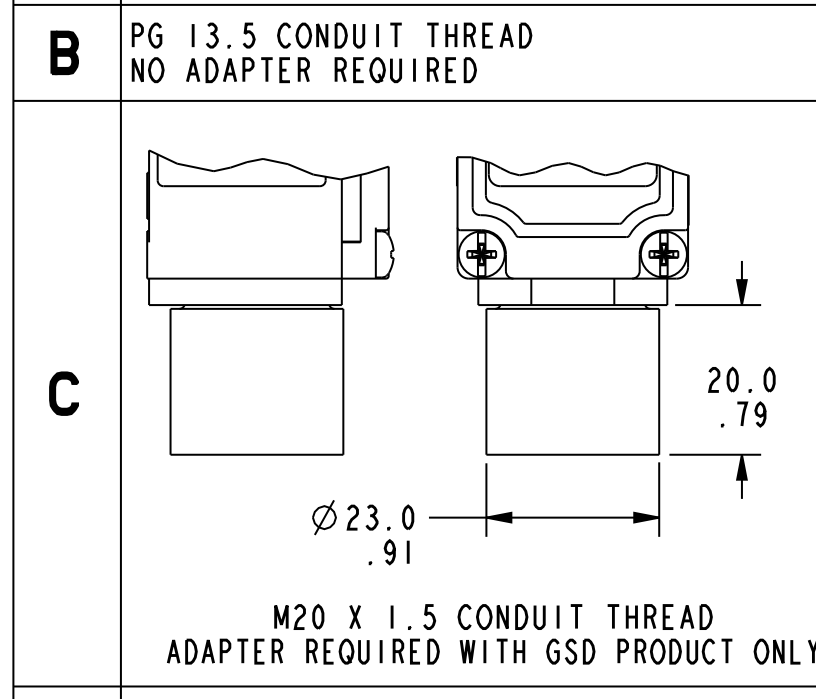
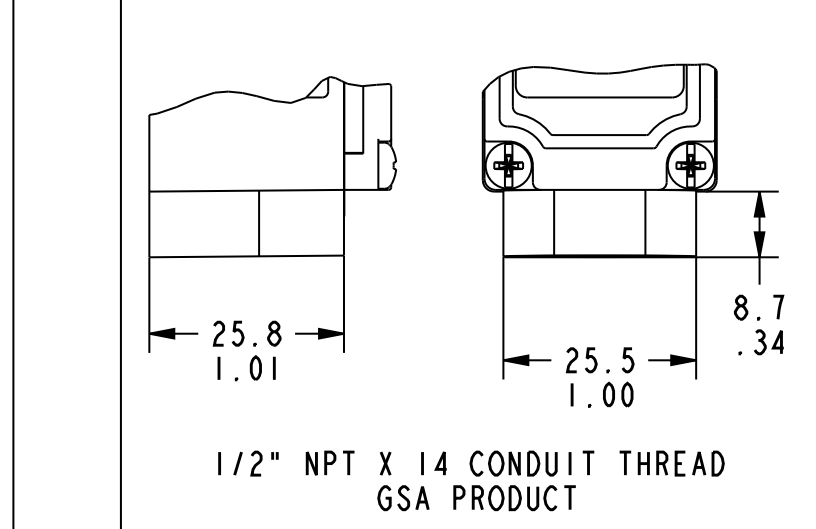
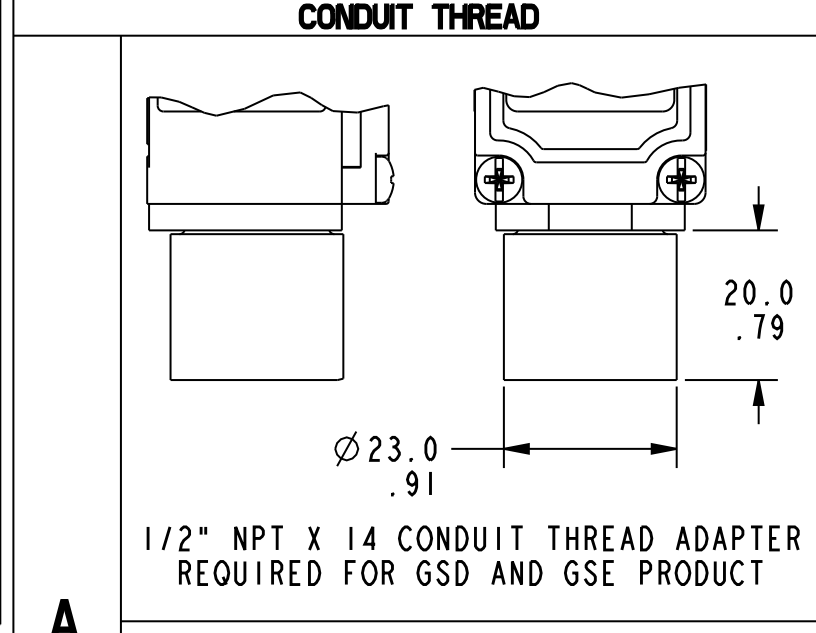
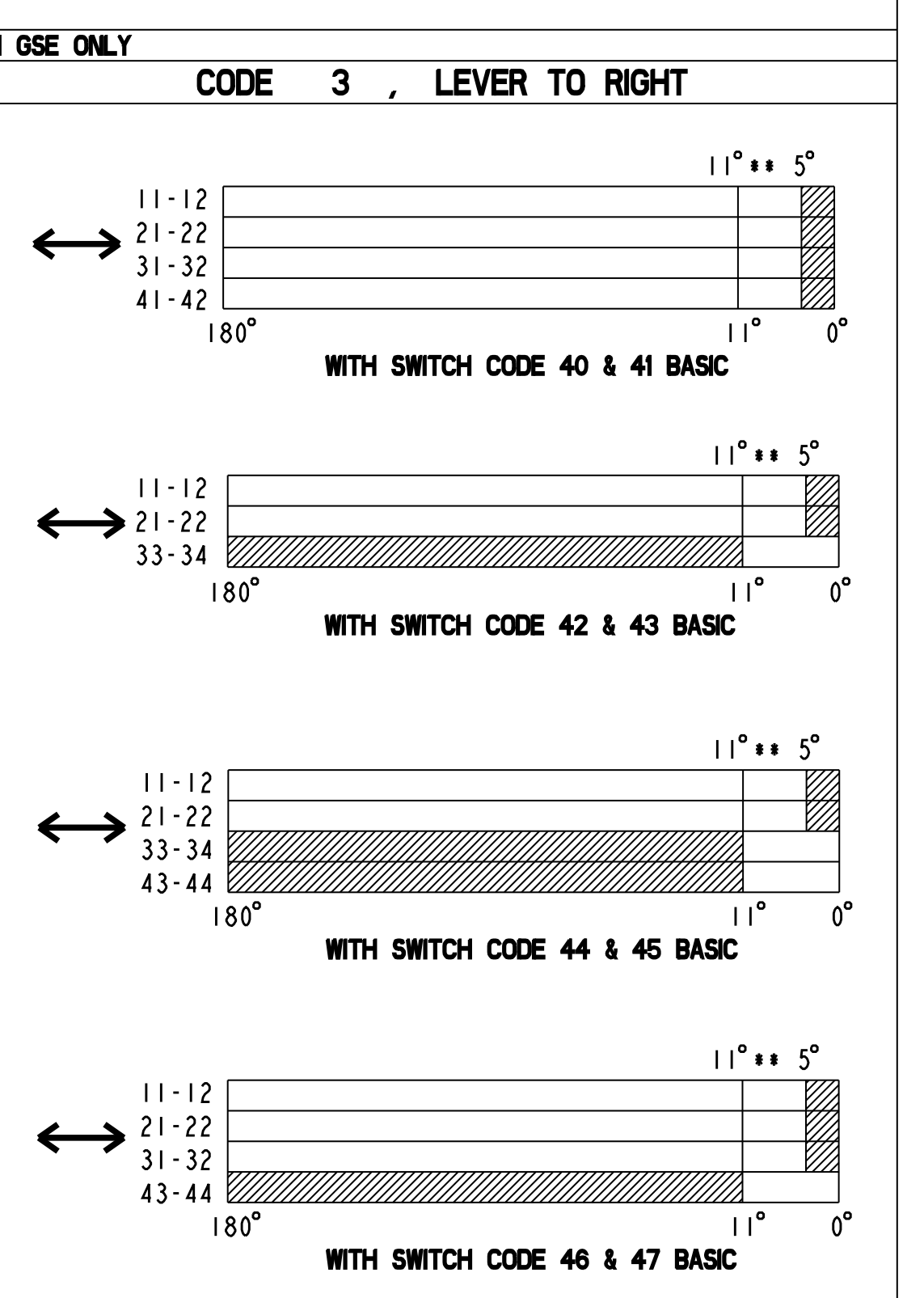
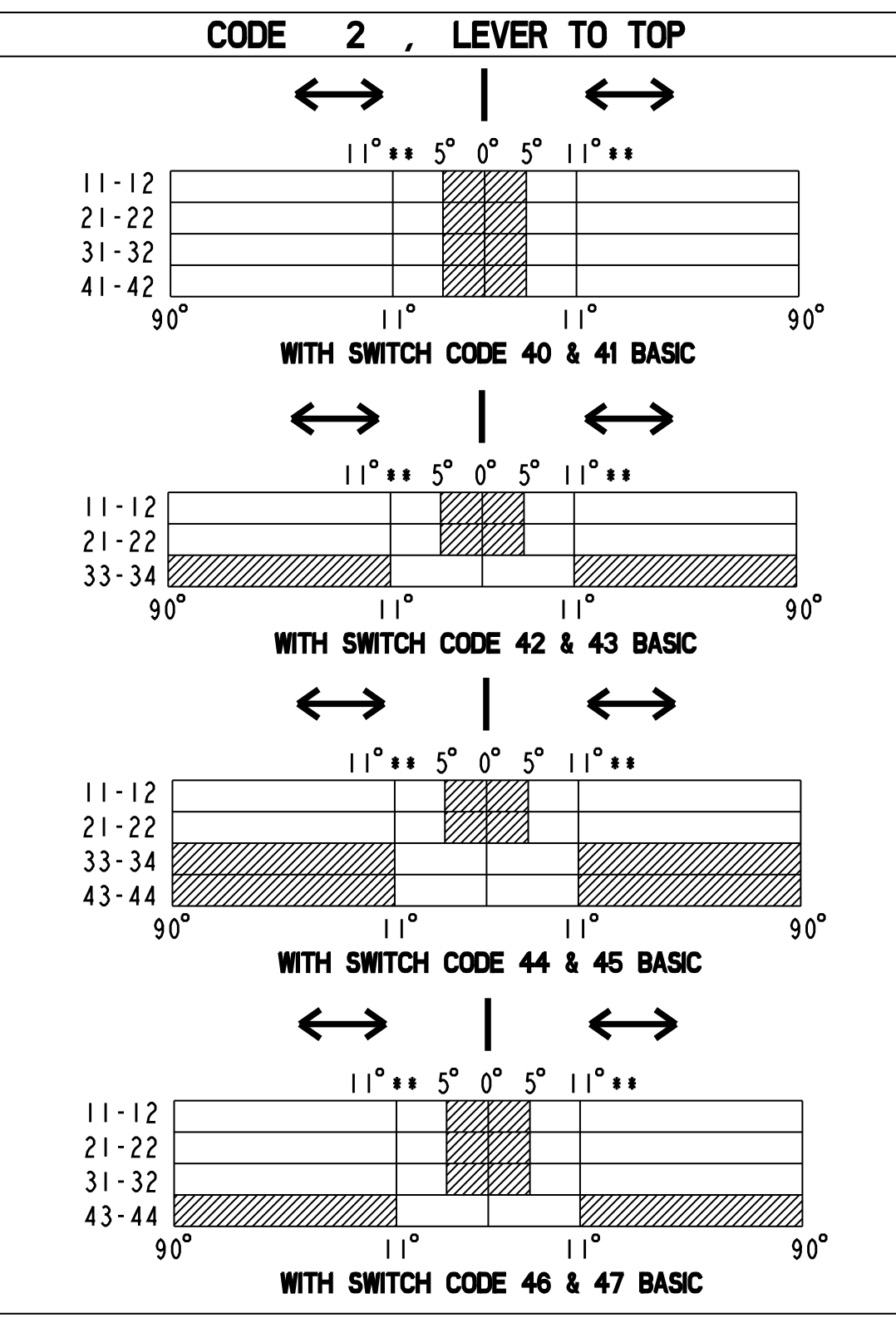
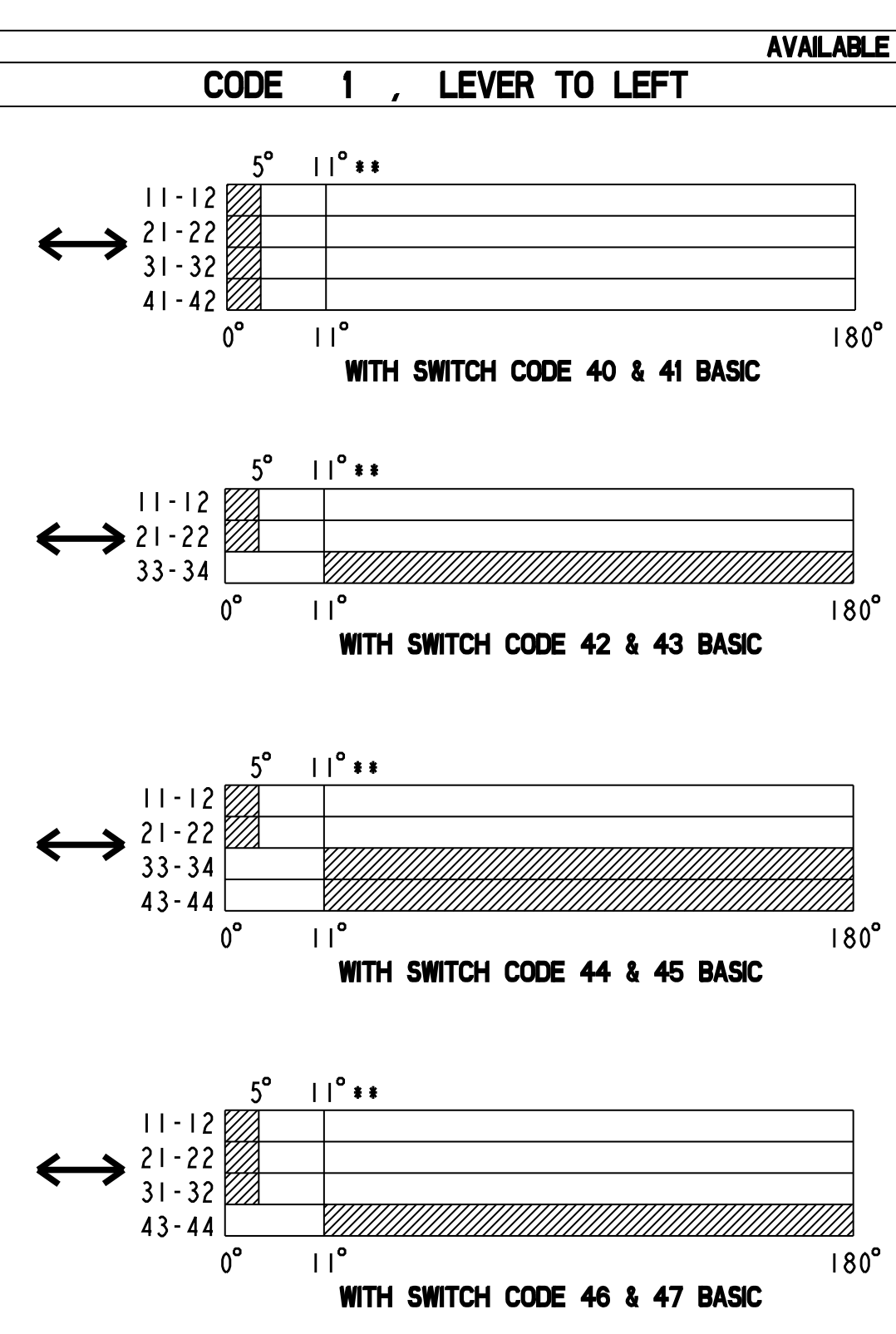
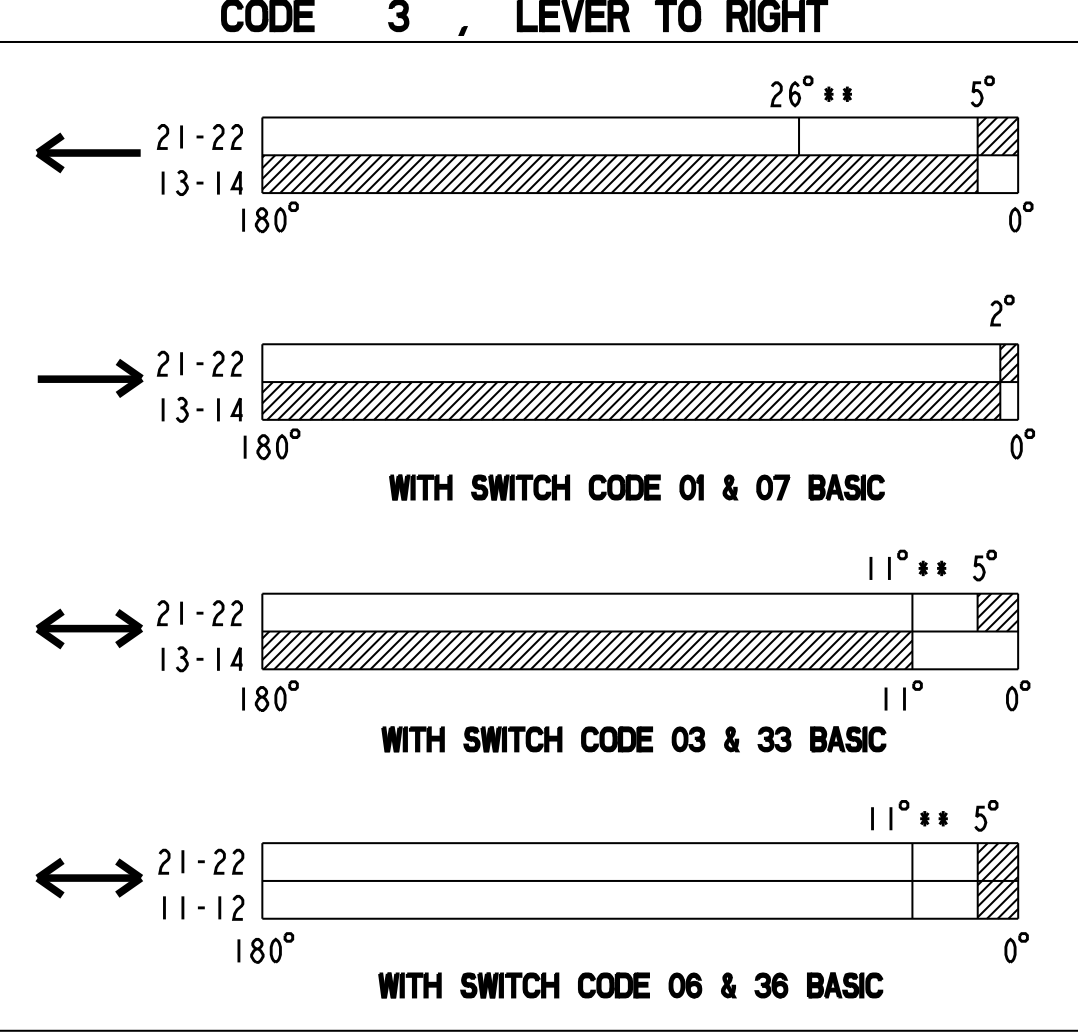
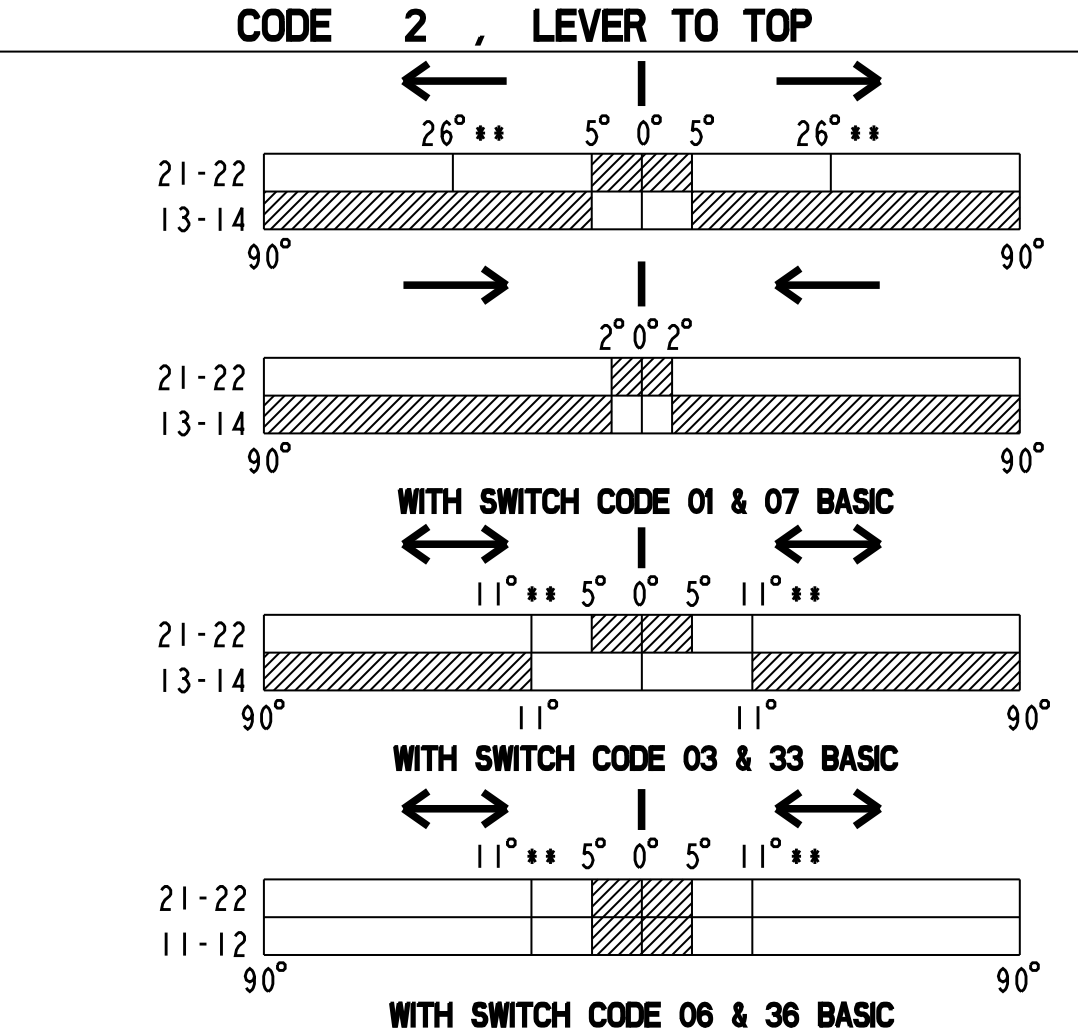
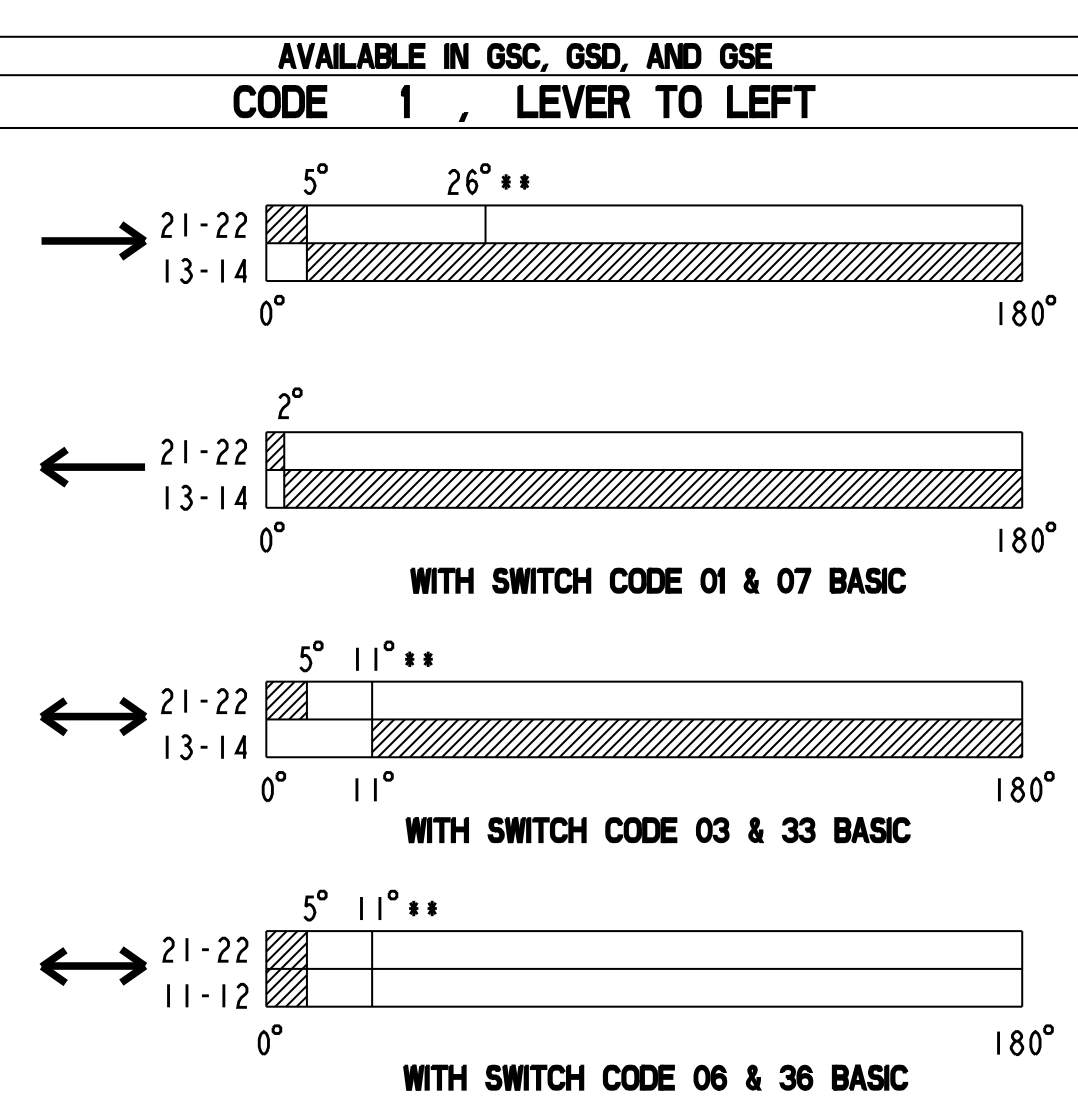


GS S

<b>C</b>	ZINC DIECAST BODY AND HEAD WITH STEEL COVER, BODY AND COVER FINISHED IN RED EPOXY PAINT HEAD FINISHED IN BLACK EPOXY PAINT
<b>D</b>	RED GLASS FILLED POLYESTER HOUSING AND COVER, ZINC DIECAST HEAD FINISHED IN BLACK EPOXY PAINT
<b>E</b>	ZINC DIECAST BODY AND HEAD WITH STEEL COVER, BODY AND COVER FINISHED IN RED EPOXY PAINT, HEAD FINISHED IN BLACK EPOXY PAINT 3 - CONDUIT



AVAILABLE IN GSC, GSD, AND GSE		AVAILABLE IN GSE ONLY	
<b>01</b>	SNAP-ACTION CONTACTS	<b>40</b>	SLOW-ACTION CONTACTS (BREAK BEFORE MAKE)
<b>07</b>	SNAP-ACTION CONTACTS (GOLD PLATED CONTACTS)	<b>41</b>	SLOW-ACTION CONTACTS (BREAK BEFORE MAKE) (GOLD PLATED CONTACTS)
<b>03</b>	SLOW-ACTION CONTACTS (BREAK BEFORE MAKE)	<b>2Y, 1X</b>	
<b>33</b>	SLOW-ACTION CONTACTS (BREAK BEFORE MAKE) (GOLD PLATED CONTACTS)	<b>33</b>	
<b>06</b>	SLOW-ACTION CONTACTS (2 NORMALLY CLOSED)	<b>42</b>	SLOW-ACTION CONTACTS (BREAK BEFORE MAKE)
<b>36</b>	SLOW-ACTION CONTACTS (2 NORMALLY CLOSED) (GOLD PLATED CONTACTS)	<b>43</b>	SLOW-ACTION CONTACTS (BREAK BEFORE MAKE) (GOLD PLATED CONTACTS)
		<b>44</b>	SLOW-ACTION CONTACTS (BREAK BEFORE MAKE)
		<b>45</b>	SLOW-ACTION CONTACTS (BREAK BEFORE MAKE) (GOLD PLATED CONTACTS)
		<b>46</b>	SLOW-ACTION CONTACTS (BREAK BEFORE MAKE)
		<b>47</b>	SLOW-ACTION CONTACTS (BREAK BEFORE MAKE) (GOLD PLATED CONTACTS)

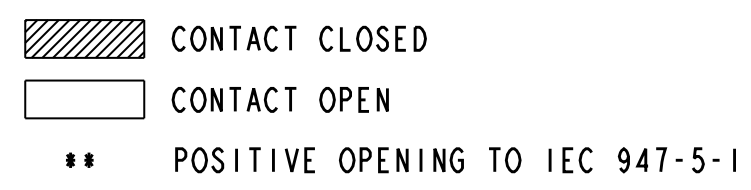


**NOTES:**

1 - MAXIMUM OPERATING TORQUE - 12 Nm / 11 in-lb  
 MAXIMUM DISCONNECT TORQUE - 16 Nm / 15 in-lb  
 MAXIMUM TIGHTENING TORQUE FOR FIXING SCREW -  
 0.5Nm/4.4in-lb (GSC & GSE PRODUCTS)  
 0.339Nm/3 in-lb (GSD PRODUCTS)

2 - IP66/IP67 NEMA 1, 4X (INDOOR USE ONLY), 12, 13 FOR GSD PRODUCTS

ELECTRICAL RATING - 1th = 10A				ENVIRONMENTAL	APPROVALS
SILVER CONTACTS		GOLD PLATED CONTACTS		IP66 NEMA 1, 4, 12, 13 TEMP RANGE: -40°C TO +85°C -40°F TO +185°F STORAGE: -40°C TO +85°C -40°F TO +185°F SHOCK: 50G PER IEC 68-2-27 VIBRATION: 100G PER IEC 68-2-6	UL IEC 947-5-1 EN50047
AC FOR SWITCH CODES 01, 07, 03, 33	AC FOR SWITCH CODES 06, 36	AC FOR SWITCH CODES 40, 41, 42, 43, 44, 45, 46, 47	DC		
A600 AC15 Ue Ie	A500 AC15 Ue Ie	A300 AC15 Ue Ie	Q300 DC13 Ue Ie		
VOLTS AMPS 120 6 240 3 380 1.9 480 1.5 500 1.4 600 1.2	VOLTS AMPS 120 6 240 3 380 1.9 480 1.5 500 1.4	VOLTS AMPS 120 6 240 3	VOLTS AMPS 125 0.55 250 0.27	1V 10uA MIN 50V 100mA MAX	



THIS DRAWING COVERS A PROPRIETARY ITEM AND IS THE PROPERTY OF MICRO SWITCH, A DIVISION OF HONEYWELL. THIS DRAWING IS NOT TO BE COPIED OR USED WITHOUT THE APPROVAL OF MICRO SWITCH.

FED. MFG. CODE 91929 CATALOG LISTING

**MICRO SWITCH**  
a Honeywell Division

**LIMIT SWITCH**

**GS SERIES CHART 2**

ANSI Y14.5M-1982 APPLIES

THIRD ANGLE PROJECTION

SCALE FULL

DO NOT SCALE PRINT

TOLERANCES

APPLY TO DESIGN UNITS. CONVERSIONS ARE ONLY FOR REFERENCE, UNLESS NOTED. TOLERANCES ARE:

NO. PLACES	2	1/2, .04	1.1	0.01, .05
ONE PLACE	1.1	0.01, .04	1.1	0.01, .05
TWO PLACES	1.1	0.01, .04	1.1	0.01, .05
THREE PLACES	1.1	0.01, .04	1.1	0.01, .05

DESIGN UNITS SI METRIC [X] US CUSTOMARY [ ]

WEIGHT TBD



## X-ON Electronics

Largest Supplier of Electrical and Electronic Components

*Click to view similar products for [Basic / Snap Action Switches](#) category:*

*Click to view products by [Honeywell](#) manufacturer:*

Other Similar products are found below :

[5SM901-S12](#) [5SM9-S12N195](#) [01.098.1358.1](#) [602EN532](#) [602EN535-RB](#) [602HE5-RB1](#) [604HE162](#) [604HE223-6B](#) [624HE17-RB](#) [6HM82](#)  
[6HM89](#) [6SE1](#) [6SX1-H58](#) [70500216](#) [70599106](#) [MBD5B1](#) [MBH2731](#) [73-316-0012](#) [EXD-AR20](#) [79211923](#) [79218589](#) [7AS12](#)  
[MIL30126AB6BBMD4A12XAU](#) [ML-1155](#) [ML-1376](#) [831010C3.0](#) [831090C2.EL](#) [83131904](#) [84212012](#) [8AS239](#) [8HM73-3](#) [8SX26-H33](#)  
[914CE1-6G](#) [PL-100](#) [11SM1077-H4](#) [11SM1077-H58](#) [11SM1-TN107](#) [11SM405](#) [11SM8423-H2](#) [11SX37-T](#) [11SX48-H58](#) [11SM2442-T](#)  
[11SM76-T](#) [11SM77-H58](#) [11SM77-T](#) [11SM863-T](#) [11SM866](#) [A7CN-1M-1-LEFT](#) [A831700C7.0](#) [121EN187-R](#)