

MICRO SWITCH

A DIVISION OF MINNEAPOLIS-HONEYWELL REGULATOR COMPANY
FREEPORT, ILLINOIS

FED. MFR. CODE 91929

ACTUATOR - SWITCH

CATALOG LISTING

JE - 61

5

JE - 61

M

DRAWING NUMBER

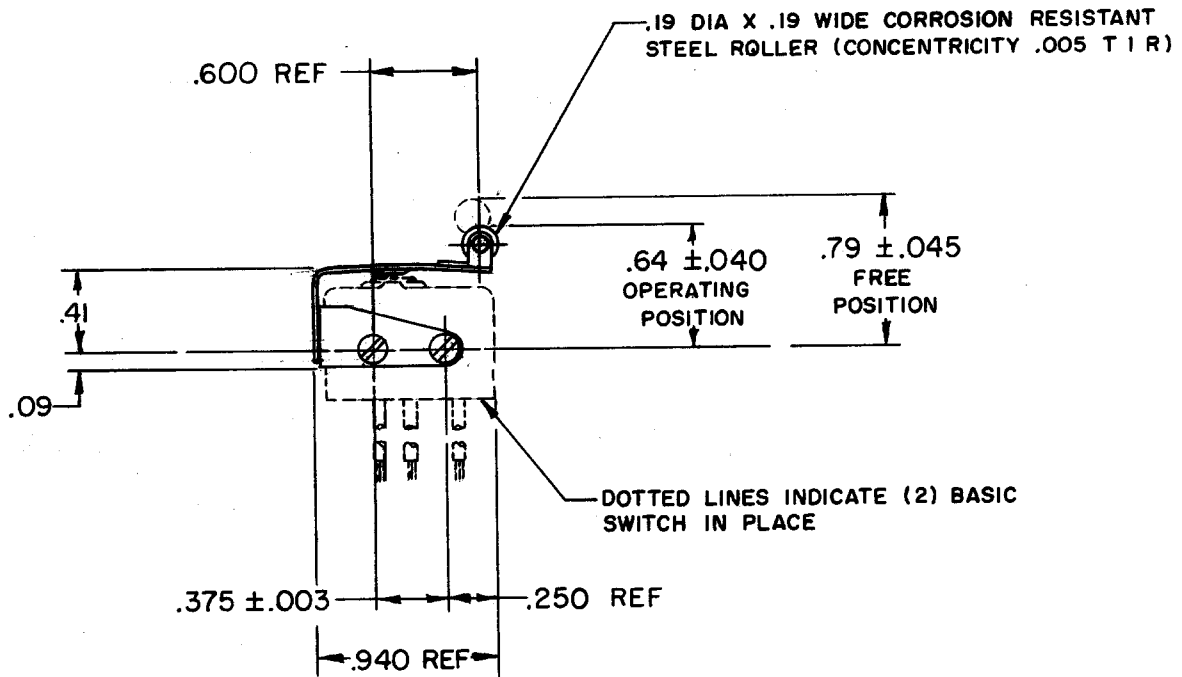
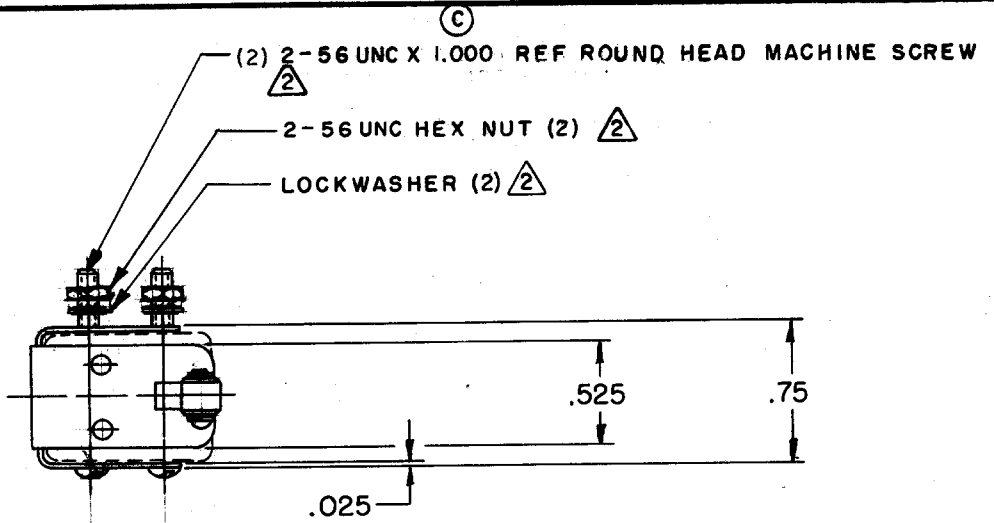
9

ISSUE

17 MAY 60

REPLACES SR 8992
RELEASE NO. SR 8992
CHECK 17 MAY 60
CHECK 19 JULY 59
CHECK 23 SEP 63
CHECK 12 JUNE 67
CHECK 17 MAY 80
CHECK 14 APR 87
CHECK 25 NOV 92
CHECK 6 MAR 95
DRAWN KLB 10 JULY 59

REVISIONS	
A	SR 8992 M B F 12 MAY 60
B	CO 16256 M B F 13 SEP 61
C	CO 18480 VDF 23 SEP 63
D	CO 22954 M B F 12 JUNE 67
E	CO 47771 C J H 17 MAY 80
F	CO 61293 W J M 14 APR 87
G	CO 74078 L J F 25 NOV 92
H	CO 79303 D L T 6 MAR 95



NOTE -
② - SWITCHES DO NOT NECESSARILY OPERATE SIMULTANEOUSLY
② - FURNISHED UNASSEMBLED

THIS DRAWING COVERS A PROPRIETARY ITEM AND IS THE PROPERTY OF MICRO SWITCH, A DIVISION OF MINNEAPOLIS-HONEYWELL REGULATOR CO. THIS DRAWING IS NOT TO BE COPIED OR USED WITHOUT THE APPROVAL OF MICRO SWITCH.

CHARACTERISTICS	ELECTRICAL DATA	SCALE FULL
① OVERTRAVEL ----- .005 MIN	CONTACT ARRANGEMENT	DO NOT SCALE PRINT
		UNLESS OTHERWISE SPECIFIED DIMENSIONS ARE IN INCHES
		TOLERANCES ARE:
		ONE PLACE (.0) ± .030
		TWO PLACE (.00) ± .015
		THREE PLACE (.000) ± .008
		ANGLES ±
		WEIGHT

FO-50378

X-ON Electronics

Largest Supplier of Electrical and Electronic Components

Click to view similar products for [Switch Actuators](#) category:

Click to view products by [Honeywell](#) manufacturer:

Other Similar products are found below :

[LW1B-A0L](#) [LW1B-M0](#) [680-4000-00](#) [704.012.618](#) [704.411.018I](#) [704.412.0](#) [704.633.1](#) [704.730.1](#) [704.733.0](#) [84-1221.7](#) [862.8102](#) [G6083](#)
[9PA24](#) [A0107X](#) [A019307](#) [ADC-418G](#) [12MA7](#) [ASDHYY-B](#) [HW1F-3G](#) [HW1M-L2222](#) [HW4S-31L](#) [200-.704-00](#) [JS-10008](#) [JS-10083](#) [JS-10118](#) [JS-10133](#) [JS-10277](#) [JS-10389](#) [JS-150](#) [JS-552](#) [JS-555](#) [JS-68](#) [JS-6-B](#) [JS-91](#) [JS-94](#) [22-211.011](#) [9001KXSDC](#) [92-458.500](#) [SAPT654133](#)
[2PA3](#) [SW53AA2](#) [302561](#) [LW2L-A0](#) [3E-12.0](#) [468-10243-001](#) [51-030.005](#) [JM-13](#) [JS-10120](#) [JS-138-B](#) [JS-143-B](#)