

# MICRO SWITCH

A DIVISION OF MINNEAPOLIS-HONEYWELL REGULATOR COMPANY  
 FREEPORT, MASSACHUSETTS

FED. MFR. CODE 91929

# ACTUATOR-SWITCH

CATALOG LISTING

JX-42

5

JX-42

M

DRAWING NUMBER

ISSUE  
 X 8  
 X 8  
 X 8

REPLACES

RELEASE NO. SR-8368

CHECK R E D 20 JUL 59

CHECK A C O 18 APR 61

CHECK B C O 22 APR 67

CHECK C M B S 18 APR 69

CHECK D C O 47771 17 MAY 80

CHECK E C O 74163 22 APR 93

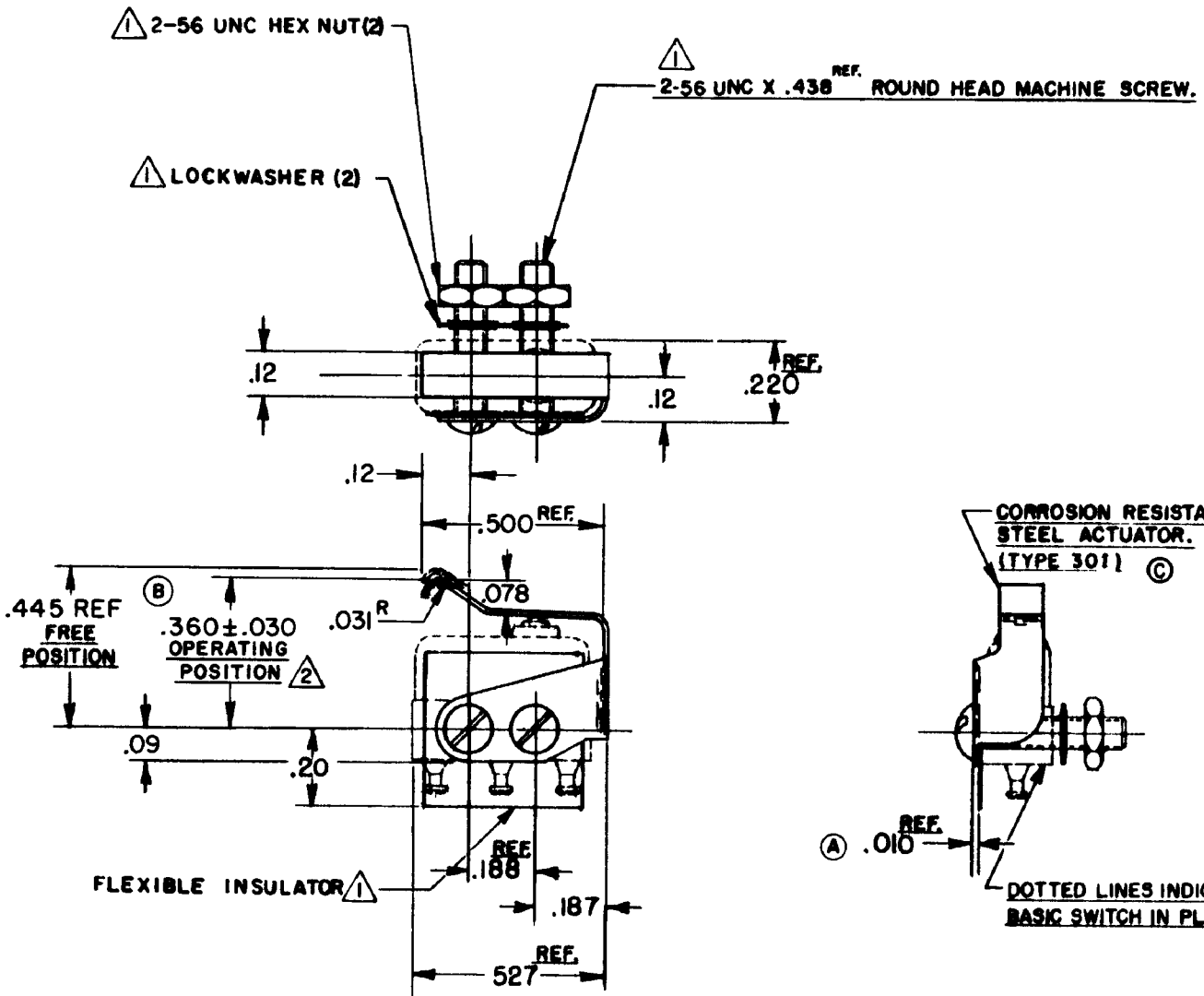
CHECK F C O 82929 13 MAY 96

CHECK G C H 23 JUL 59

CHECK H N H L 24 JUNE 59

DRAWN

NHL



**NOTE-**

- △ FURNISHED UNASSEMBLED.
- △ SLIGHT ROTATION BETWEEN BASIC AND ACTUATOR MAY BE NECESSARY TO OBTAIN OPERATING POSITION

THIS DRAWING COVERS A PROPRIETARY ITEM AND IS THE PROPERTY OF MICRO SWITCH, A DIVISION OF MINNEAPOLIS-HONEYWELL REGULATOR CO. THIS DRAWING IS NOT TO BE COPIED OR USED WITHOUT THE APPROVAL OF MICRO SWITCH.

**CHARACTERISTICS** WITH ISX1-T BASIC SWITCH INSTALLED

OPERATING FORCE ----- 10 OZ. MAX.  
 RELEASE FORCE ----- 2 OZ. MIN.  
 DIFFERENTIAL TRAVEL ----- .025 MAX.  
 OVERTRAVEL ----- .015 MIN.

**ELECTRICAL DATA**

CONTACT ARRANGEMENT      BREAK DISTANCE

SCALE 2 TO 1

DO NOT SCALE PRINT

UNLESS OTHERWISE SPECIFIED  
 DIMENSIONS ARE IN INCHES  
**TOLERANCES ARE:**  
 ONE PLACE (.0) ± .030  
 TWO PLACE (.00) ± .015  
 THREE PLACE (.000) ± .005  
 ANGLES ±

WEIGHT

## X-ON Electronics

Largest Supplier of Electrical and Electronic Components

*Click to view similar products for [Switch Actuators](#) category:*

*Click to view products by [Honeywell](#) manufacturer:*

Other Similar products are found below :

[LW1B-A0L](#) [LW1B-M0](#) [680-4000-00](#) [704.012.618](#) [704.411.018I](#) [704.412.0](#) [704.633.1](#) [704.730.1](#) [704.733.0](#) [84-1221.7](#) [862.8102](#) [G6083](#)  
[9PA24](#) [A0107X](#) [A019307](#) [ADC-418G](#) [12MA7](#) [ASDHYY-B](#) [HW1F-3G](#) [HW1M-L2222](#) [HW4S-31L](#) [200-.704-00](#) [JS-10008](#) [JS-10083](#) [JS-10118](#) [JS-10133](#) [JS-10277](#) [JS-10389](#) [JS-150](#) [JS-552](#) [JS-555](#) [JS-68](#) [JS-6-B](#) [JS-91](#) [JS-94](#) [22-211.011](#) [9001KXSDC](#) [92-458.500](#) [SAPT654133](#)  
[2PA3](#) [SW53AA2](#) [302561](#) [LW2L-A0](#) [3E-12.0](#) [468-10243-001](#) [51-030.005](#) [JM-13](#) [JS-10120](#) [JS-138-B](#) [JS-143-B](#)