

# MICRO SWITCH

A DIVISION OF MINNEAPOLIS-HONEYWELL REGULATOR COMPANY  
 FREDERICK, MARYLAND  
 FED. MFR. CODE 91929

# ACTUATOR-SWITCH

CATALOG LISTING

JX-58

JX-58

M

DRAWING NUMBER

88

88

ISSUE

88

REPLACES

RELEASE NO. SR 9424

CHECK 9 SEP 60

CHECK BLS

CHECK 12 SEP 60

CHECK RJP

CHECK CO47771

CHECK CJH

CHECK 17 MAY 80

CHECK F

CHECK 8 MAR 95

CHECK G

CHECK 13 MAY 96

CHECK H

CHECK 0015428

CHECK SPK

CHECK 14 SEP 05

CHECK RJ

CHECK 14 SEP 05

CHECK 9 SEP 60

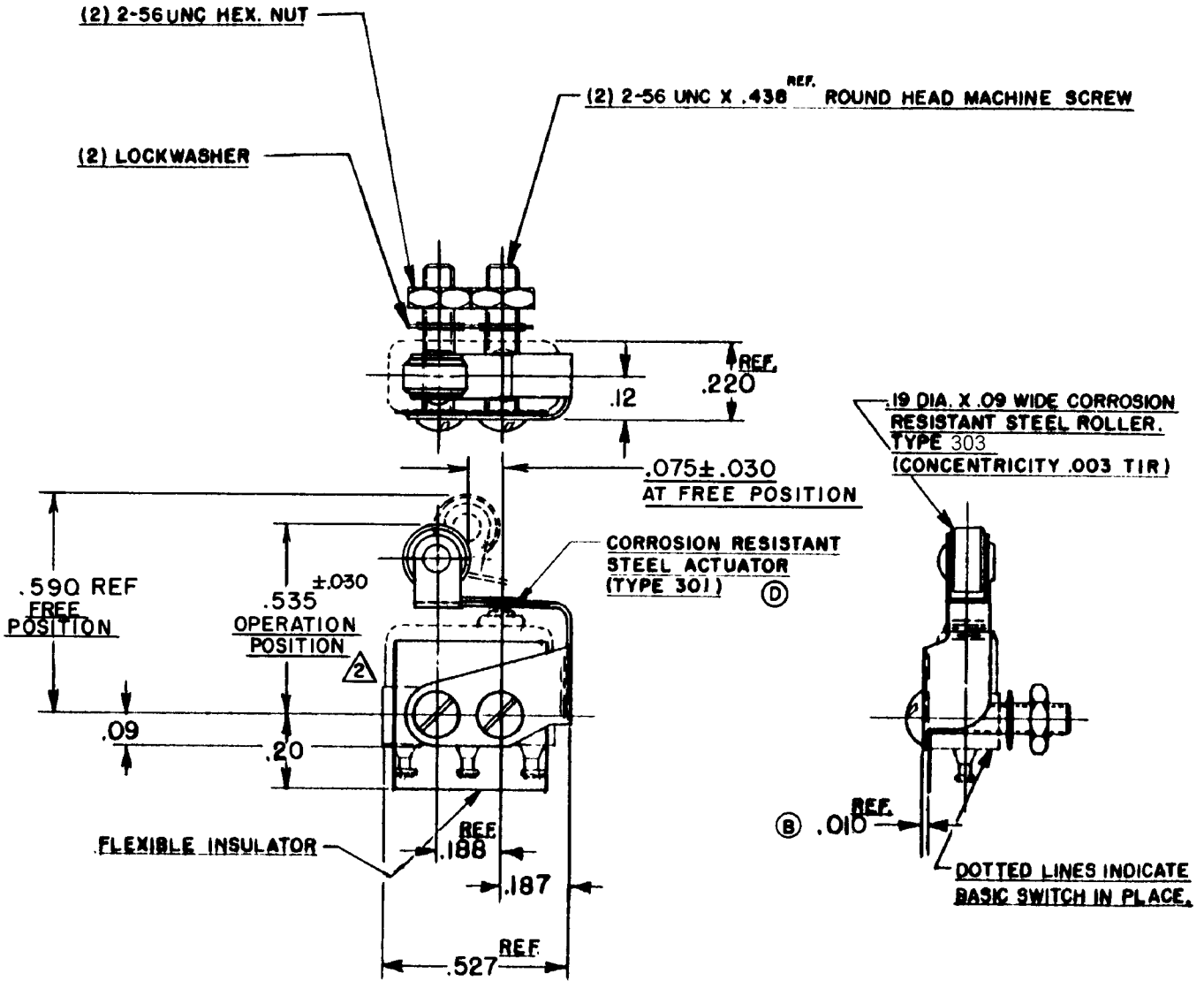
CHECK RJ

CHECK 9 SEP 60

CHECK RJ

CHECK 9 SEP 60

CHECK RJ



**NOTE -**

- 1- SCREWS, NUTS, LOCKWASHERS AND INSULATOR FURNISHED UNASSEMBLED.
- 2- SLIGHT ROTATION BETWEEN BASIC AND ACTUATOR MAY BE NECESSARY TO OBTAIN OPERATING POSITION

THIS DRAWING COVERS A PROPRIETARY ITEM AND IS THE PROPERTY OF MICRO SWITCH, A DIVISION OF MINNEAPOLIS-HONEYWELL REGULATOR CO. THIS DRAWING IS NOT TO BE COPIED OR USED WITHOUT THE APPROVAL OF MICRO SWITCH.

**CHARACTERISTICS WITH 15X1-T BASIC SWITCH INSTALLED**

OPERATING FORCE	-----12 OZ MAX
RELEASE FORCE	----- 2 OZ MIN
DIFFERENTIAL TRAVEL	----- .015 MAX
OVERTRAVEL	----- .015 MIN

**ELECTRICAL DATA**

CONTACT ARRANGEMENT	BREAK DISTANCE

SCALE 2 TO 1  
 DO NOT SCALE PRINT  
 UNLESS OTHERWISE SPECIFIED  
 DIMENSIONS ARE IN INCHES  
**TOLERANCES ARE:**  
 ONE PLACE (.0) ±.030  
 TWO PLACE (.00) ±.015  
 THREE PLACE (.000) ±.005  
 ANGLES ±  
 WEIGHT

REVISIONS  
 A SR9424  
 13 JAN 61  
 B CO15829  
 M B F  
 17 APRIL 61  
 C CO22579  
 D MW  
 28 APR 67  
 D CO22579  
 M B S  
 19 APR 68  
 E CO47771  
 CJH  
 17 MAY 80  
 F CO79303  
 DLT  
 8 MAR 95  
 G CO82929  
 DLT  
 13 MAY 96  
 H 0015428  
 SPK  
 14 SEP 05

FO-50378

## X-ON Electronics

Largest Supplier of Electrical and Electronic Components

*Click to view similar products for [Switch Fixings](#) category:*

*Click to view products by [Honeywell](#) manufacturer:*

Other Similar products are found below :

[893102000](#) [00-5150](#) [LZZ1A](#) [0098.9234](#) [M2PA-5011](#) [630155](#) [635401](#) [6PA113](#) [6PA147-E6](#) [6PA148-E6](#) [6PA32](#) [6PA9](#) [700106](#) [700109](#)  
[700303A56](#) [700C1GRY](#) [700C2GRN](#) [704-6001](#) [704.960.9](#) [704.965.2](#) [704.965.6](#) [704.966.0](#) [7089-3](#) [710082-B11](#) [71M1048](#) [757200264](#)  
[764300000](#) [MHU35](#) [MHU37](#) [807039-1](#) [825.003.011](#) [825.005.011](#) [825.053.011](#) [825.055.011](#) [826.000.071](#) [827.020.011](#) [827.400.021](#)  
[835.900.023](#) [MML52C10C](#) [MML52E10C](#) [MML92HGH](#) [MML93K](#) [84211M02CNNS](#) [84212M02CNNS](#) [842.500.011](#) [843.000.011](#) [843187-](#)  
[000](#) [843487-000](#) [84-901](#) [84-902](#)