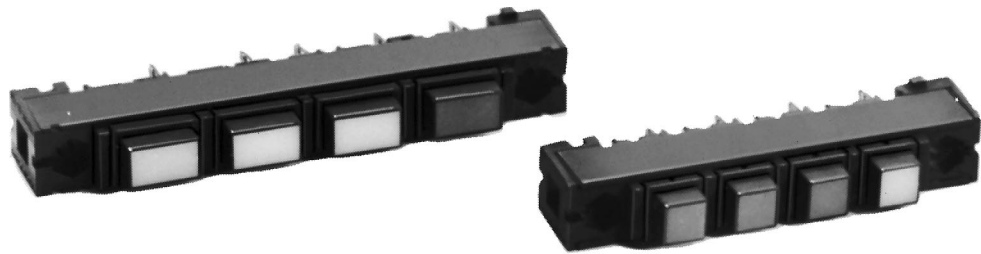


Manual Switches

Strip Mounting Frames

MML61 Series



MML61 ORDER GUIDE

MML61K

Orientation/Color
For Rectangular* Housings:
MML61K Horizontal strip, black
MML61G Vertical strip, black
For Square Housings
MML61J Black

* * .4" x .6" housings only.

5

No. of Stations
1 One
2 Two
3 Three
4 Four
5 Five
6 Six
7 Seven
8 Eight
9 Nine
10 Ten

Note: Switches and indicators are ordered as separate items.

FEATURES

- Provides back of panel or printed wiring board mounting in a multi-unit strip of switches/indicators.
- Devices can be pre-wired prior to installation.
- Holes at each end of frame will accept No. 4 screws.
- Can be used for pushbutton or rocker type switches.

Example: MML61K5

Black 5-station strip mounting frame, horizontal orientation.

Manuals

X-ON Electronics

Largest Supplier of Electrical and Electronic Components

Click to view similar products for [Switch Fixings](#) category:

Click to view products by [Honeywell](#) manufacturer:

Other Similar products are found below :

[893102000](#) [00-5150](#) [LZZ1A](#) [0098.9234](#) [M2PA-5011](#) [630155](#) [635401](#) [6PA113](#) [6PA147-E6](#) [6PA148-E6](#) [6PA32](#) [6PA9](#) [700106](#) [700109](#)
[700303A56](#) [700C1GRY](#) [700C2GRN](#) [704-6001](#) [704.960.9](#) [704.965.2](#) [704.965.6](#) [704.966.0](#) [7089-3](#) [710082-B11](#) [71M1048](#) [757200264](#)
[764300000](#) [MHU35](#) [MHU37](#) [807039-1](#) [825.003.011](#) [825.005.011](#) [825.053.011](#) [825.055.011](#) [826.000.071](#) [827.020.011](#) [827.400.021](#)
[835.900.023](#) [MML52C10C](#) [MML52E10C](#) [MML92HGH](#) [MML93K](#) [84211M02CNNS](#) [84212M02CNNS](#) [842.500.011](#) [843.000.011](#) [843187-000](#) [843487-000](#) [84-901](#) [84-902](#)