

MICRO SWITCH
a Honeywell Division

FED. MFG. CODE 91 929

SWITCH - BASIC

CATALOG LISTING

BZ-7RW822155516T-S

WHEN SEARCHING FOR THIS CATALOG LISTING WITHIN HONEYWELL'S INTERNAL SAP SYSTEM, THE LISTING MUST BE ENTERED WITHOUT DASHES (BZ7RW822155516TS) DUE TO CHARACTER LIMITATIONS IMPOSED BY THE SYSTEM.

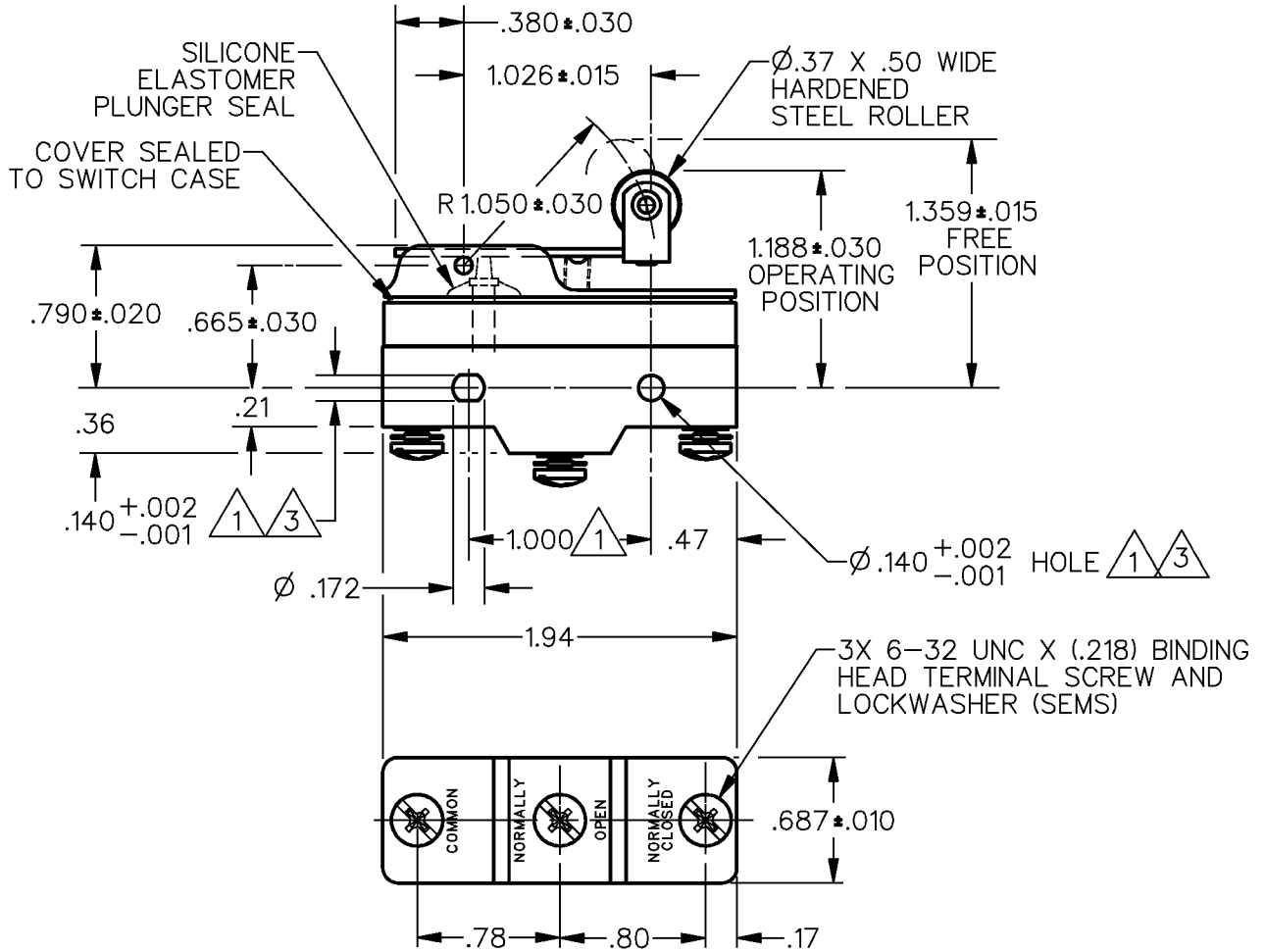
CATALOG LISTING
BZ-7RW822155516T-S
PAGE 1 OF 1

REPLACES X94405-BZ
RELEASE NO. PR-19804

ISSUE
M
4

REVISIONS	
A	CO-1 77588 S A V 29 MAR 94
B	CO93346 DLT 17 AUG 98
C	0046794 KNR 11 DEC 08

CHECK
11DEC08
RS
14 FEB 92
J A L
13 FEB 92



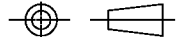
NOTES

- ① MOUNTING HOLES WILL ACCEPT PINS OR SCREWS OF MAX Ø.139 ON 1.000 ±.002 CENTERS
- ② - SEALED CONSTRUCTION PROVIDES SPLASH RESISTANCE
- ③ SLIGHT COUNTERBORE PERMISSIBLE (EITHER SIDE)

ANSI Y14.5M-1982 APPLIES

THIS DRAWING COVERS A PROPRIETARY ITEM AND IS THE PROPERTY OF MICRO SWITCH, A DIVISION OF HONEYWELL. THIS DRAWING IS NOT TO BE COPIED OR USED WITHOUT THE APPROVAL OF MICRO SWITCH.

THIRD ANGLE PROJECTION



CHARACTERISTICS	ELECTRICAL DATA	SCALE	NONE	DO NOT SCALE PRINT
OPERATING FORCE -----7 OZ MAX	CONTACT ARRANGEMENT S P D T	UNLESS OTHERWISE SPECIFIED TOLERANCES ARE		
RELEASE FORCE -----1 1/2 OZ MIN	L9 10A 125, <u>250</u> OR 480 VAC 1/2A 125 VDC, 1/4A 250 VDC	ONE PLACE (.0)	±.030	
DIFFERENTIAL TRAVEL -----.020-.050		TWO PLACE (.00)	±.015	
OVERTRAVEL -----.094 MIN	L288	THREE PLACE (.000)	±.005	
		ANGLES	±	
		WEIGHT	.079 LB.	



RASTER
DRAWN

J A S
13 FEB 92

X-ON Electronics

Largest Supplier of Electrical and Electronic Components

Click to view similar products for [Basic / Snap Action Switches](#) category:

Click to view products by [Honeywell](#) manufacturer:

Other Similar products are found below :

[5SM901-S12](#) [5SM9-S12N195](#) [01.098.1358.1](#) [602EN532](#) [602EN535-RB](#) [602HE5-RB1](#) [604HE162](#) [604HE223-6B](#) [624HE17-RB](#) [6HM82](#)
[6HM89](#) [6SE1](#) [6SX1-H58](#) [70500216](#) [70599106](#) [MBD5B1](#) [MBH2731](#) [73-316-0012](#) [EXD-AR20](#) [79211923](#) [79218589](#) [7AS12](#)
[MIL30126AB6BBMD4A12XAU](#) [ML-1155](#) [ML-1376](#) [831010C3.0](#) [831090C2.EL](#) [83131904](#) [84212012](#) [8AS239](#) [8HM73-3](#) [8SX26-H33](#)
[914CE1-6G](#) [PL-100](#) [11SM1077-H4](#) [11SM1077-H58](#) [11SM1-TN107](#) [11SM405](#) [11SM8423-H2](#) [11SX37-T](#) [11SX48-H58](#) [11SM2442-T](#)
[11SM76-T](#) [11SM77-H58](#) [11SM77-T](#) [11SM863-T](#) [11SM866](#) [A7CN-1M-1-LEFT](#) [A831700C7.0](#) [121EN187-R](#)