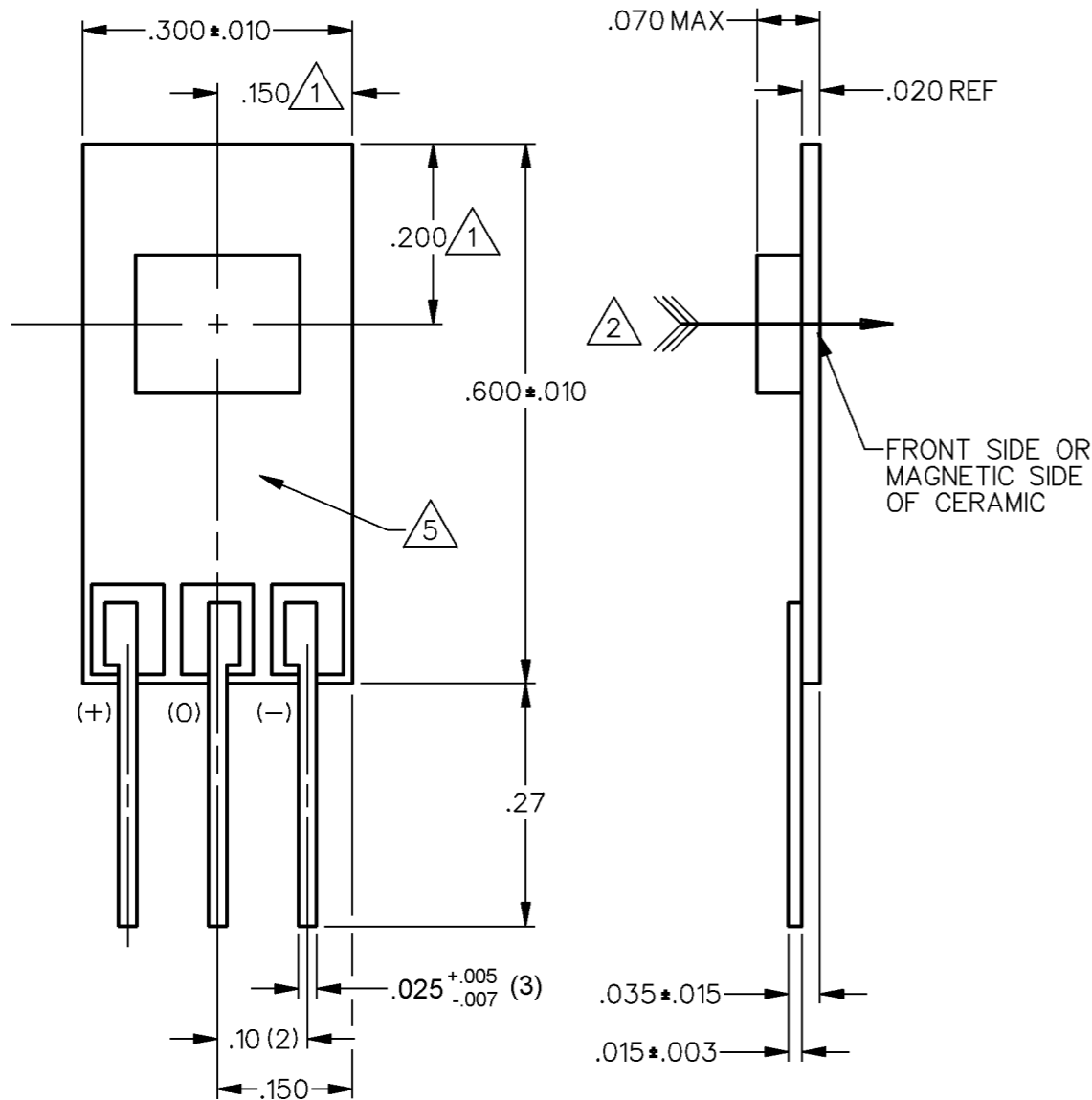


SPECIFICATIONS 6

PARAMETER	CONDITIONS	MIN	TYP	MAX	UNITS
SENSITIVITY	TA = 25°C	24.5	25.0	25.5	mV/GAUSS
NULL	TA = 25°	3.92	4.00	4.08	VOLTS
SUPPLY CURRENT	TA = 25°		13	20	mA
OUTPUT CURRENT (SINK OR SOURCE)		1.0	2.0		mA
OUTPUT VOLTAGE SWING					
VOM -	-B APPLIED	1.2	1.1		VOLTS
VOM +	7 +B APPLIED	Vs -1.0	Vs -.9		VOLTS
B LIMITS FOR LINEAR OPERATION	-B MAX	-100	-115		GAUSS
	+B MAX	+100	+115		GAUSS
Vnull DRIFT	B = 0			±.10	%/°C
SENSITIVITY DRIFT				+0.02/-0.055	%/°C
LINEARITY	-B MAX T +B MAX	-1.5	-.8	0	% OF SPAN
SUPPLY VOLTAGE		6.6		12.6	VOLTS



NOTES

- 1 CENTERLINE OF HALL CELL (IC) ONLY. THE LOCATION OF THE CERAMIC COVER IS NOT SPECIFIED
- 2 THE + MAGNETIC FLUX IS IN THIS DIRECTION (THIS ASSUMES THE CONVENTION THAT THE DIRECTION OF THE EXTERNAL FLUX OF A MAGNET IS FROM THE NORTH TO THE SOUTH POLE OF THE MAGNET)
- 3 - THE DEVICE CANNOT BE DAMAGED BY MAGNETIC OVERDRIVE
- 4 - OUTPUT TYPE - RATIOMETRIC
- 5 ARTWORK IS TYPICAL
- 6 ALL CHARACTERISTICS ARE -40°C TO 125°C UNLESS OTHERWISE STATED WITH Vs = 8.000 VDC
- 7 THE OUTPUT IS CLAMPED AT 9.0 VDC MINIMUM, 9.5 VDC TYPICAL

THIRD ANGLE PROJECTION

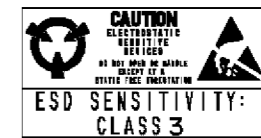
SCALE 5 : 1

DO NOT SCALE PRINT

UNLESS OTHERWISE SPECIFIED TOLERANCES ARE

ONE PLACE	(.0)	±.030
TWO PLACE	(.00)	±.015
THREE PLACE	(.000)	±.005
ANGLES		±

WEIGHT



CATALOG LISTING SS94A1F PAGE 1 OF 1
 ISSUE 10
 RELEASE NO. PR-17444
 REPLACES X89676-SS
 REVISIONS
 A C066416 K A G 25 SEP 89
 B C066822 J A S 2 FEB 90
 C C072441 J A S 19 MAY 92
 D C073280 J A F 11 AUG 92
 E C075573 J A F 12 JUL 93
 F C076360 J A F 10 AUG 93
 G C075704 DLM 21 MAR 00
 H 0038694 SSK 14 APR 08
 I 0039911 SS 19 MAY 08
 DRAWN J A S 19 AUG 89
 CHECK K A G 8 AUG 89
 CHECK K A G 19 MAY 08
 RASTER

X-ON Electronics

Largest Supplier of Electrical and Electronic Components

Click to view similar products for [Board Mount Hall Effect/Magnetic Sensors](#) category:

Click to view products by [Honeywell](#) manufacturer:

Other Similar products are found below :

[HGPRDT005A](#) [AH277AZ4-AG1](#) [AV-10448](#) [SS41C](#) [AH1894-Z-7](#) [TLE4917](#) [TLE4946-1L](#) [50017859-003](#) [TY-13101](#) [TLE4976L](#) [SS85CA](#)
[BU52002GUL-E2](#) [BU52003GUL-E2](#) [AH277AZ4-BG1](#) [TLE49614MXTSA1](#) [AH3376-P-B](#) [AH3382-P-B](#) [AH3377-P-B](#) [AH211Z4-AG1](#)
[AH3360-FT4-7](#) [TLE4941-1](#) [SS460S-100SAMPLE](#) [AH374-P-A](#) [SS460P-T2](#) [AH1913-W-7](#) [AH3373-P-B](#) [TLE9852QXXUMA1](#) [MA732GQ-Z](#)
[MA330GQ-Z](#) [AH1903-FA-EVM](#) [AH8502-FDC-EVM](#) [TLE4998S3XALA1](#) [TLE5011FUMA1](#) [TLE5027CE6747HAMA1](#)
[TLE5109A16E1210XUMA1](#) [TLI4966GHTSA1](#) [TLI4906KHTSA1](#) [MA710GQ-P](#) [S-57K1NBL2A-M3T2U](#) [S-57P1NBL9S-M3T4U](#) [S-](#)
[576ZNL2B-L3T2U](#) [S-576ZNL2B-A6T8U](#) [S-57P1NBL0S-M3T4U](#) [S-57A1NSL1A-M3T2U](#) [S-57K1RBL1A-M3T2U](#) [S-57P1NBH9S-M3T4U](#)
[S-57P1NBH0S-M3T4U](#) [S-57A1NSH1A-M3T2U](#) [S-57A1NSH2A-M3T2U](#) [S-57K1NBH1A-M3T2U](#)