

MICRO SWITCH

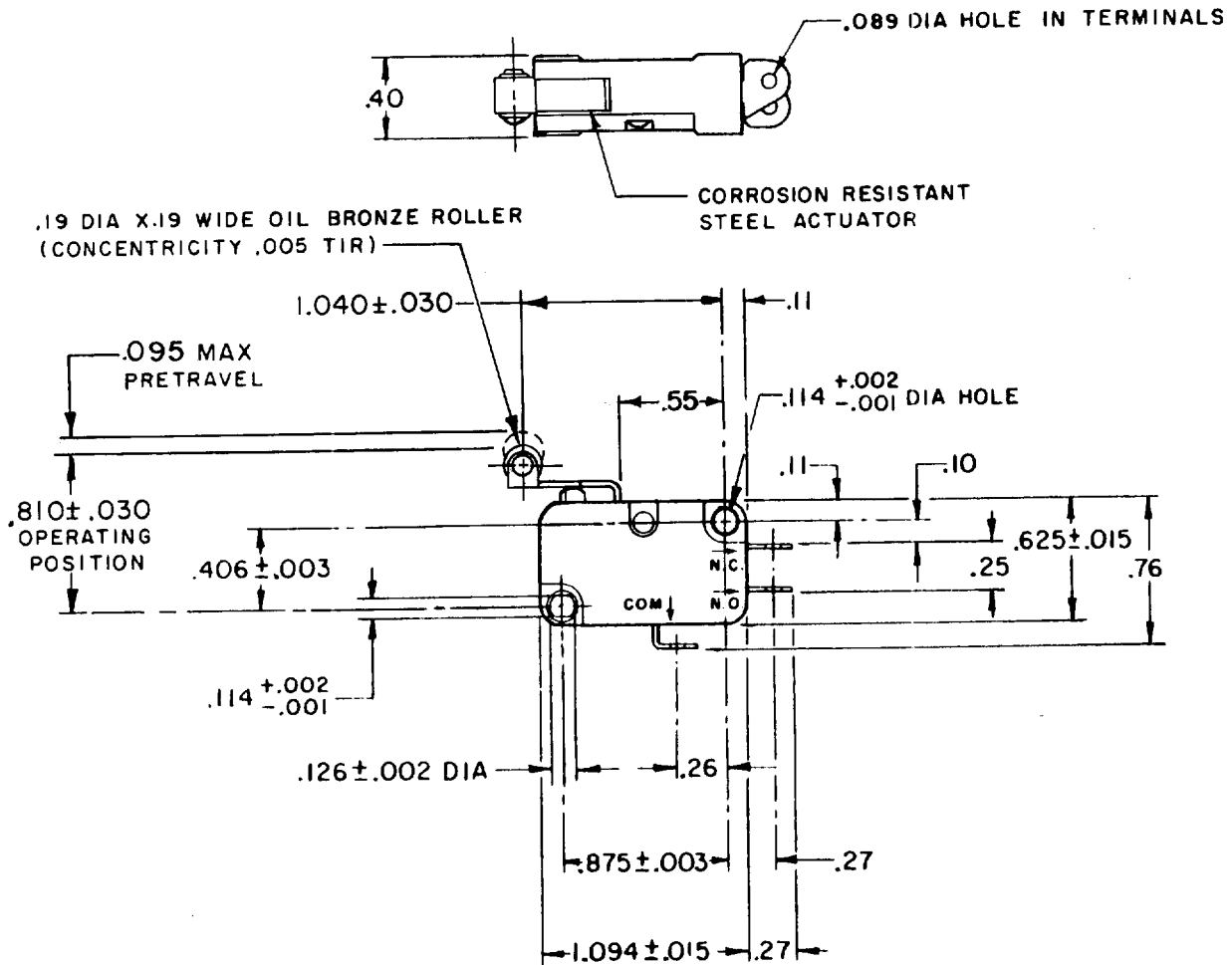
FREEPORT ILLINOIS, U.S.A
A DIVISION OF HONEYWELL
FED. MFG. CODE 91929

SWITCH - BASIC

CATALOG LISTING
V3L-2226
CQ-X1507

5

V3L-2226
 M
 DRAWING NUMBER
 X 2
 ISSUE
 3
 REVISIONS
 A CO 59221
 SMA 29 SEPT 86
 B CO 76417
 J A L 20 OCT 93
 RELEASE NO. PR-7488
 CHECK
 2 NOV 78
 CEB
 CHECK
 31 OCT 78
 WJM
 DRAWN
 FO-52848-A



NOTE -
1 - TERMINALS ARE PLATED FOR SOLDERING

THIS DRAWING COVERS A PROPRIETARY ITEM AND IS THE PROPERTY OF MICRO SWITCH, A DIVISION OF HONEYWELL. THIS DRAWING IS NOT TO BE COPIED OR USED WITHOUT THE APPROVAL OF MICRO SWITCH.

THIRD ANGLE PROJECTION

CHARACTERISTICS	
OPERATING FORCE	----- 40 GRAM MAX
RELEASE FORCE	----- 2 GRAM MIN
DIFFERENTIAL TRAVEL	----- .028 MAX
OVERTRAVEL	----- .050 MIN
RELEASE TRAVEL	----- .014 MIN

ELECTRICAL DATA	
CONTACT ARRANGEMENT S P D T	
L131 10A-1/4HP-125 OR 250 VAC 1/2A-125 VDC; 1/4A-250 VDC 3A-125 VAC "L"	

SCALE FULL			
DO NOT SCALE PRINT			
TOLERANCES APPLY TO DESIGN UNITS. CONVERSIONS ARE ONLY FOR REFERENCE. UNLESS NOTED, TOLERANCES ARE ±			
DIM. mm	TOL. mm/in	DIM. in	TOL. mm/in
NO PLACES ONE PLACE TWO PLACES THREE PLACES ANGLES	x x,x x,xx x,xxx	1/.04 0.4/.016 0.15/.006	x,x x,xx x,xxx 0.8/.03 0.38/.015 0.13/.005
DESIGN UNITS	SI METRIC <input type="checkbox"/>	US CUSTOMARY <input checked="" type="checkbox"/>	
WEIGHT			

X-ON Electronics

Largest Supplier of Electrical and Electronic Components

Click to view similar products for [Basic / Snap Action Switches](#) category:

Click to view products by [Honeywell](#) manufacturer:

Other Similar products are found below :

[5SM901-S12](#) [5SM9-S12N195](#) [602EN532](#) [602EN535-RB](#) [602HE5-RB1](#) [604HE162](#) [604HE223-6B](#) [624HE17-RB](#) [6HM82](#) [6HM89](#) [6SE1](#)
[6SX1-H58](#) [70500216](#) [70599106](#) [MBD5B1](#) [MBH2731](#) [73-316-0012](#) [EXD-AR20](#) [79211923](#) [79218589](#) [7AS12](#)
[MIL30126AB6BBMD4A12XAU](#) [ML-1155](#) [ML-1376](#) [831010C3.0](#) [831090C2.EL](#) [83131904](#) [84212012](#) [8AS239](#) [8HM73-3](#) [8SX26-H33](#)
[914CE1-6G](#) [PL-100](#) [11SM1077-H4](#) [11SM1077-H58](#) [11SM1-TN107](#) [11SM405](#) [11SM8423-H2](#) [11SX37-T](#) [11SX48-H58](#) [11SM2442-T](#)
[11SM76-T](#) [11SM77-H58](#) [11SM77-T](#) [11SM863-T](#) [11SM866](#) [A7CN-1M-1-LEFT](#) [A831700C7.0](#) [121EN187-R](#) [121EN188-R](#)