

MICRO SWITCH
a Honeywell Division

FED. MFG. CODE 91 929

SWITCH - BASIC

CATALOG LISTING

V3L-2905

CQ-X1636

REPLACES X101188-V3L

RELEASE NO. PR-22425

CATALOG LISTING
V3L-2905
PAGE 1 OF 1

ISSUE
M
1

CHECK

CHECK

REVISIONS

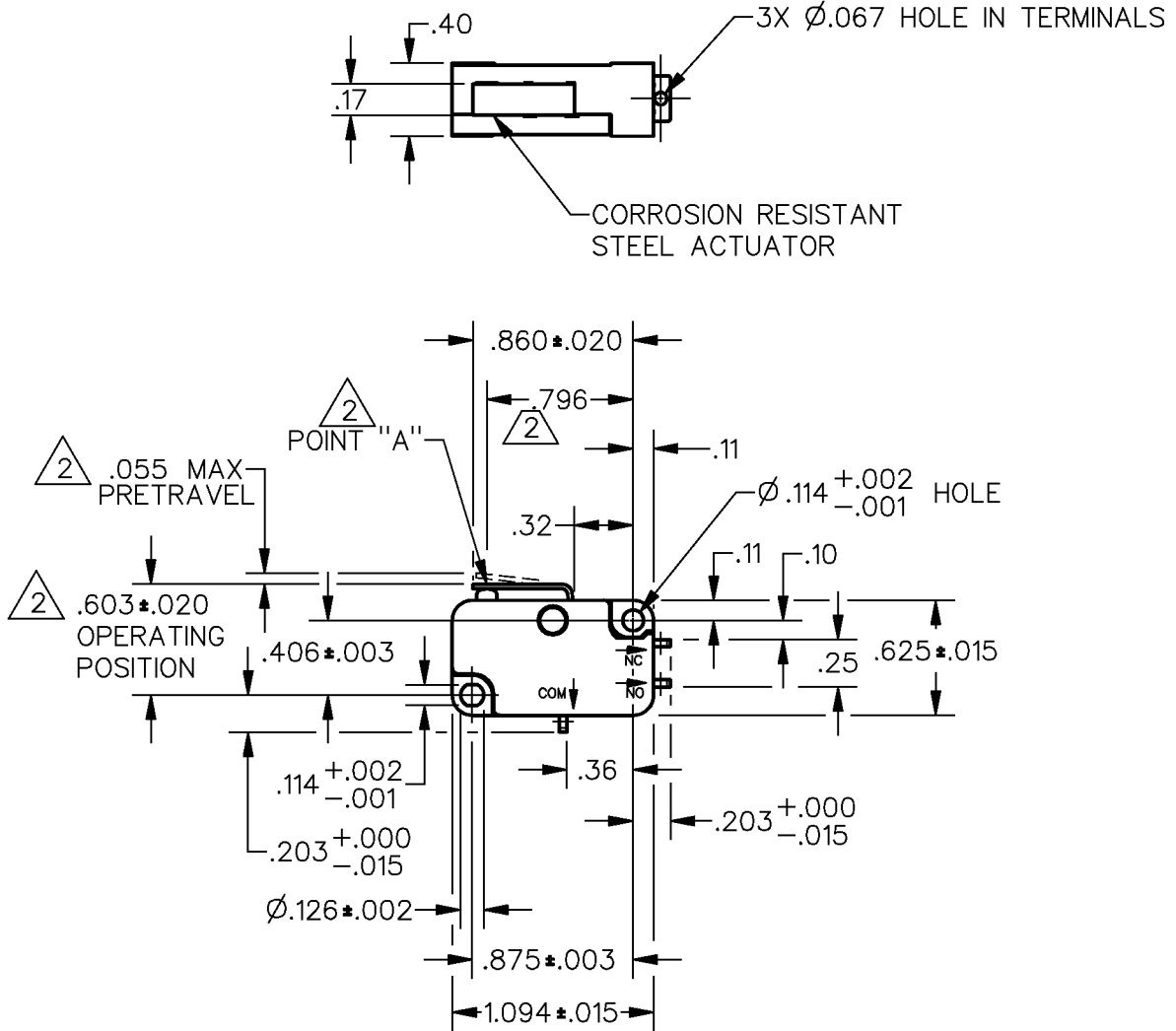
CHECK

CHECK

15 NOV 96

DCS

DDM/CAD
DRAWN



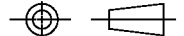
NOTES

- 1 - TERMINALS ARE SILVER PLATED
- ② CHARACTERISTICS MEASURED AT POINT "A"
- 3 - MAXIMUM MECHANICAL DEAD BREAK OF $.0031$ CAN BE EXPECTED WITH THIS SWITCH CONSTRUCTION

ANSI Y14.5M-1982 APPLIES

THIS DRAWING COVERS A PROPRIETARY ITEM AND IS THE PROPERTY OF MICRO SWITCH, A DIVISION OF HONEYWELL. THIS DRAWING IS NOT TO BE COPIED OR USED WITHOUT THE APPROVAL OF MICRO SWITCH.

THIRD ANGLE PROJECTION



CHARACTERISTICS	ELECTRICAL DATA	SCALE FULL	DO NOT SCALE PRINT
OPERATING FORCE --- 271 GRAMS MAX	CONTACT ARRANGEMENT S P D T	UNLESS OTHERWISE SPECIFIED TOLERANCES ARE	
RELEASE FORCE --- 24 GRAMS MIN	25A, 277 VAC 1HP, 125 VAC 2HP, 250 VAC	ONE PLACE (.0) ±.030	
DIFFERENTIAL TRAVEL --- .012 MAX		TWO PLACE (.00) ±.015	
OVERTRAVEL --- .032 MIN		THREE PLACE (.000) ±.005	
RELEASE TRAVEL --- .007 MIN		ANGLES	±
		WEIGHT	



X-ON Electronics

Largest Supplier of Electrical and Electronic Components

Click to view similar products for [Basic / Snap Action Switches](#) category:

Click to view products by [Honeywell](#) manufacturer:

Other Similar products are found below :

[5SM901-S12](#) [5SM9-S12N195](#) [01.098.1358.1](#) [602EN532](#) [602EN535-RB](#) [602HE5-RB1](#) [604HE162](#) [604HE223-6B](#) [624HE17-RB](#) [6HM82](#)
[6HM89](#) [6SE1](#) [6SX1-H58](#) [70500216](#) [70599106](#) [MBD5B1](#) [MBH2731](#) [73-316-0012](#) [EXD-AR20](#) [79211923](#) [79218589](#) [7AS12](#)
[MIL30126AB6BBMD4A12XAU](#) [ML-1155](#) [ML-1376](#) [831010C3.0](#) [831090C2.EL](#) [83131904](#) [84212012](#) [8AS239](#) [8HM73-3](#) [8SX26-H33](#)
[914CE1-6G](#) [PL-100](#) [11SM1077-H4](#) [11SM1077-H58](#) [11SM1-TN107](#) [11SM405](#) [11SM8423-H2](#) [11SX37-T](#) [11SX48-H58](#) [11SM2442-T](#)
[11SM76-T](#) [11SM77-H58](#) [11SM77-T](#) [11SM863-T](#) [11SM866](#) [A7CN-1M-1-LEFT](#) [A831700C7.0](#) [121EN187-R](#)