

MICRO SWITCH

A DIVISION OF MILWAUKEE POLY-HONEYWELL REGULATOR COMPANY
 FREEPORT, ILLINOIS

FED. MFR. CODE 91929

SWITCH - BASIC

CATALOG LISTING

YA-2RL-A6

ADK8500

YA-2RL-A6

PAGE 1 OF 1

M

DRAWING NUMBER

7

ISSUE

REPLACES

RELEASE NO. CO 8520

17 FEB 06

RJ

CHECK

2 APR. 56

C.V.T.

CHECK

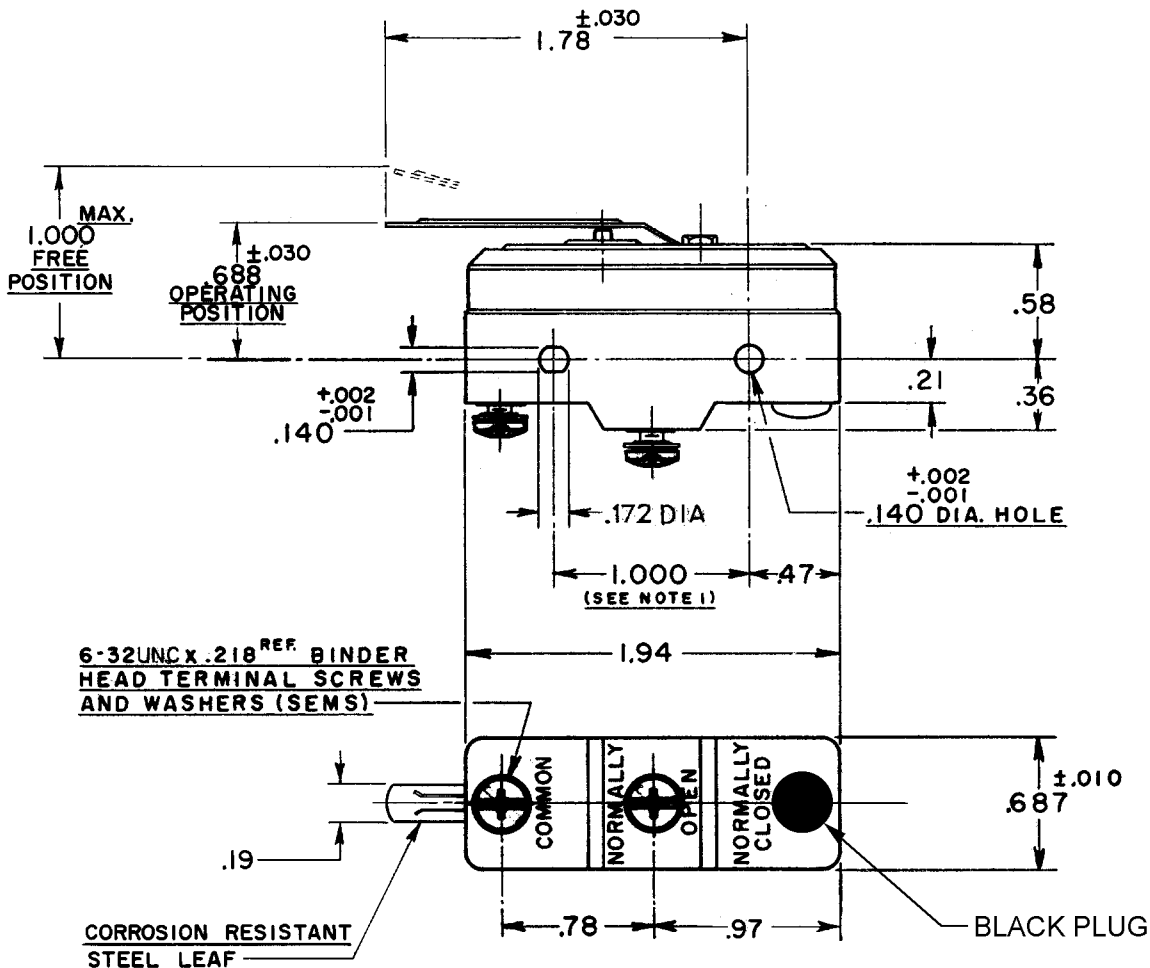
2 APR. 56

CHECK

56

R. E. R. 28 MAR

74-96



REVISIONS

A	CO-69351-D	JWB	18 JUL 91
B	CO-77588	KDR	29 MAR 94
C	CO78111	DLT	6 JUL 94
D	CO93346	DLT	27 AUG 98
E	0000677	JLH	25 JUN 03
F	0018388	TGP	17 FEB 06

NOTE -

1 - MOUNTING HOLES WILL ACCEPT PINS OR SCREWS OF .139 MAX. DIA. ON 1.000 ± .002 CENTERS.

THIS DRAWING COVERS A PROPRIETARY ITEM AND IS THE PROPERTY OF MICRO SWITCH, A DIVISION OF HONEYWELL. THIS DRAWING IS NOT TO BE COPIED OR USED WITHOUT THE APPROVAL OF MICRO SWITCH.

CHARACTERISTICS

OPERATING FORCE ----- 9 OZ. MAX.
 RELEASE FORCE ----- 1 OZ. MIN.
 DIFFERENTIAL TRAVEL ----- .065 MAX.
 OVERTRAVEL ----- DO NOT OVERTRAVEL MORE THAN .060

ELECTRICAL DATA

CONTACT ARRANGEMENT
 S. P. N. O.
 BREAK DISTANCE
 .020 MIN.
 L23 20A 125, 250 OR 480 VAC
 10A 125 VAC "L"
 1HP 125 VAC, 2HP 250 VAC
 1/2A 125 VDC, 1/4A 250 VDC
 L288
 L308
 L315
 CE
 20(3)A 250V ~ T85 5E4

SCALE FULL

DO NOT SCALE PRINT

UNLESS OTHERWISE SPECIFIED
 DIMENSIONS ARE IN INCHES
TOLERANCES ARE:
 ONE PLACE (.0) ±.030
 TWO PLACE (.00) ±.015
 THREE PLACE (.000) ±.005
 ANGLES ±

WEIGHT .063 LB.

RASTER

DRAWN

X-ON Electronics

Largest Supplier of Electrical and Electronic Components

Click to view similar products for [Basic / Snap Action Switches](#) category:

Click to view products by [Honeywell](#) manufacturer:

Other Similar products are found below :

[5SM901-S12](#) [5SM9-S12N195](#) [01.098.1358.1](#) [602EN532](#) [602EN535-RB](#) [602HE5-RB1](#) [604HE162](#) [604HE223-6B](#) [624HE17-RB](#) [6HM82](#)
[6HM89](#) [6SE1](#) [6SX1-H58](#) [70500216](#) [70599106](#) [MBD5B1](#) [MBH2731](#) [73-316-0012](#) [EXD-AR20](#) [79211923](#) [79218589](#) [7AS12](#)
[MIL30126AB6BBMD4A12XAU](#) [ML-1155](#) [ML-1376](#) [831010C3.0](#) [831090C2.EL](#) [83131904](#) [84212012](#) [8AS239](#) [8HM73-3](#) [8SX26-H33](#)
[914CE1-6G](#) [PL-100](#) [11SM1077-H4](#) [11SM1077-H58](#) [11SM1-TN107](#) [11SM405](#) [11SM8423-H2](#) [11SX37-T](#) [11SX48-H58](#) [11SM2442-T](#)
[11SM76-T](#) [11SM77-H58](#) [11SM77-T](#) [11SM863-T](#) [11SM866](#) [A7CN-1M-1-LEFT](#) [A831700C7.0](#) [121EN187-R](#)