

MICRO SWITCH

FREEPORT ILLINOIS, U.S.A
A DIVISION OF HONEYWELL
FED. MFG. CODE 91929

SWITCH-BASIC

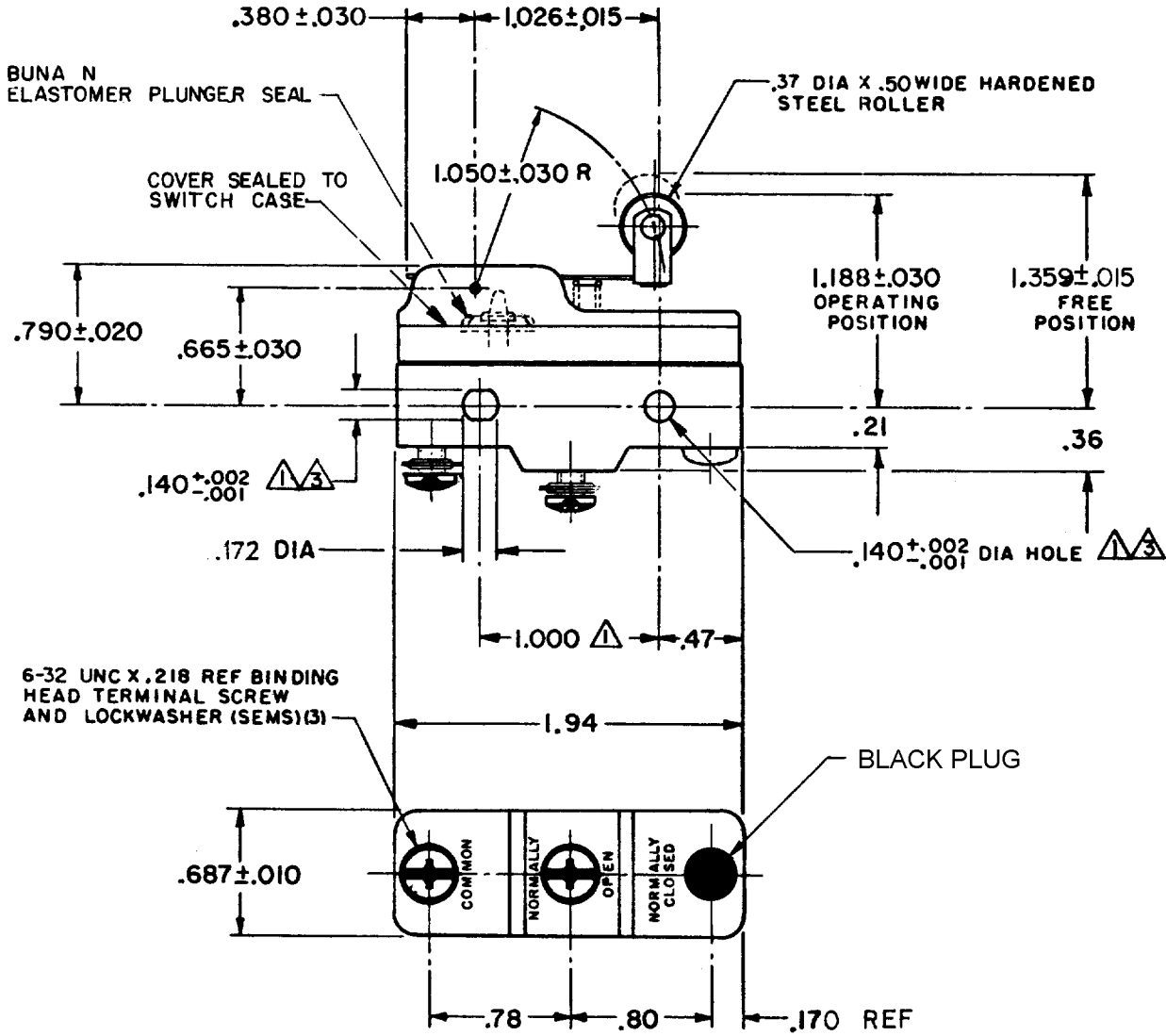
CATALOG LISTING

YZ-7RW8221555516T

CATALOG LISTING
YZ-7RW8221555516T
PAGE 1 OF 1
RELEASE NO. PR-10650-T REPLACES X71643-YZ

M
DRAWING NUMBER
6
ISSUE

REVISIONS	
A	CO67209 JAP 2 MAY 90
B	CO- 69351-D JWB 18 JUL 91
C	CO- 77588 KDR 29 MAR 94
D	CO93346 DLT 17 AUG 98
E	0000763 CSL 2 JUL 03



- NOTES**
- 1 MOUNTING HOLES WILL ACCEPT PINS OR SCREWS OF .139 MAX DIA ON 1.000±.002 CENTERS
 - 2 SEALED CONSTRUCTION PROVIDES SPLASH RESISTANCE
 - 3 SLIGHT COUNTERBORE PERMISSIBLE (EITHER SIDE)

THIS DRAWING COVERS A PROPRIETARY ITEM AND IS THE PROPERTY OF MICRO SWITCH, A DIVISION OF HONEYWELL. THIS DRAWING IS NOT TO BE COPIED OR USED WITHOUT THE APPROVAL OF MICRO SWITCH.

THIRD ANGLE PROJECTION

CHARACTERISTICS	ELECTRICAL DATA	SCALE FULL																								
OPERATING FORCE - - - - - 7 OZ MAX	CONTACT ARRANGEMENT S P N O	DO NOT SCALE PRINT																								
RELEASE FORCE - - - - - 1 1/2 MIN	L9	TOLERANCES APPLY TO DESIGN UNITS. CONVERSIONS ARE ONLY FOR REFERENCE. UNLESS NOTED, TOLERANCES ARE 2																								
DIFFERENTIAL TRAVEL - - - - .020 - .050	10A 125, 250 OR 480 VAC 1/2 A 125 VDC, 1/4 A 250 VDC	<table border="1"> <thead> <tr> <th>DIM.</th> <th>TOL.</th> <th>DIM.</th> <th>TOL.</th> </tr> <tr> <th>mm</th> <th>mm/in</th> <th>in</th> <th>mm/in</th> </tr> </thead> <tbody> <tr> <td>NO PLACES</td> <td>X</td> <td>17.04</td> <td></td> </tr> <tr> <td>ONE PLACE</td> <td>X.X</td> <td>0.47, 0.18</td> <td>X.X</td> </tr> <tr> <td>TWO PLACES</td> <td>X.XX</td> <td>0.18, 0.08</td> <td>X.XX</td> </tr> <tr> <td>THREE PLACES</td> <td>X.XXX</td> <td></td> <td>X.XXX</td> </tr> </tbody> </table>	DIM.	TOL.	DIM.	TOL.	mm	mm/in	in	mm/in	NO PLACES	X	17.04		ONE PLACE	X.X	0.47, 0.18	X.X	TWO PLACES	X.XX	0.18, 0.08	X.XX	THREE PLACES	X.XXX		X.XXX
DIM.	TOL.	DIM.	TOL.																							
mm	mm/in	in	mm/in																							
NO PLACES	X	17.04																								
ONE PLACE	X.X	0.47, 0.18	X.X																							
TWO PLACES	X.XX	0.18, 0.08	X.XX																							
THREE PLACES	X.XXX		X.XXX																							
OVERTRAVEL - - - - - .094 MIN	L288	SI METRIC <input type="checkbox"/> US CUSTOMARY <input checked="" type="checkbox"/>																								
	DESIGN UNITS	WEIGHT .079 LB																								

FO-52848-A
DRAWN
EF 19 OCT 81
CHECK C EB 26 OCT 81
CHECK

X-ON Electronics

Largest Supplier of Electrical and Electronic Components

Click to view similar products for [Basic / Snap Action Switches](#) category:

Click to view products by [Honeywell](#) manufacturer:

Other Similar products are found below :

[5SM901-S12](#) [5SM9-S12N195](#) [01.098.1358.1](#) [602EN532](#) [602EN535-RB](#) [602HE5-RB1](#) [604HE162](#) [604HE223-6B](#) [624HE17-RB](#) [6HM82](#)
[6HM89](#) [6SE1](#) [6SX1-H58](#) [70500216](#) [70599106](#) [MBD5B1](#) [MBH2731](#) [73-316-0012](#) [EXD-AR20](#) [79211923](#) [79218589](#) [7AS12](#)
[MIL30126AB6BBMD4A12XAU](#) [ML-1155](#) [ML-1376](#) [831010C3.0](#) [831090C2.EL](#) [83131904](#) [84212012](#) [8AS239](#) [8HM73-3](#) [8SX26-H33](#)
[914CE1-6G](#) [PL-100](#) [11SM1077-H4](#) [11SM1077-H58](#) [11SM1-TN107](#) [11SM405](#) [11SM8423-H2](#) [11SX37-T](#) [11SX48-H58](#) [11SM2442-T](#)
[11SM76-T](#) [11SM77-H58](#) [11SM77-T](#) [11SM863-T](#) [11SM866](#) [A7CN-1M-1-LEFT](#) [A831700C7.0](#) [121EN187-R](#)