

# MICRO SWITCH

A DIVISION OF MINNEAPOLIS-HONEYWELL REGULATOR COMPANY  
PRINCETON, ILLINOIS

FED. MFR. CODE 91929

## SWITCH-BASIC

CATALOG LISTING

### YZ-R

(M) YZ-R  
ISSUE 6

REPLACES

RELEASE NO.

CHECK C 7 0 26 July 55

CHECK R 2 5 July 55

CHECK S 2 7 July 55

CHECK G 2 9 JUNE 55

YZ-R

PAGE 1 OF 1

M

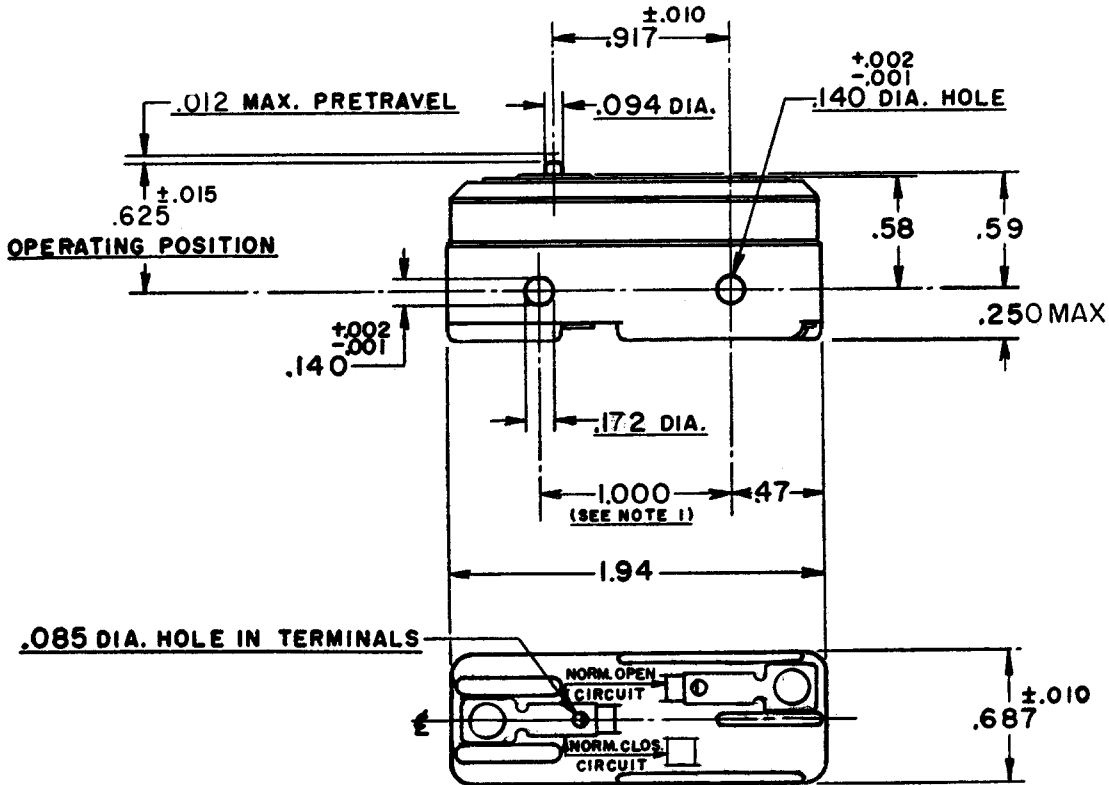
DRAWING NUMBER

13

ISSUE

REVISIONS

A	CO 8520	W. D. W.	29 JUNE 55
B	CO 23645	M B F	23 JAN 68
C	CO 34162	D B W	3 JUL 75
D	CO 46304	WJM	12 DEC 79
E	CO 58037	SMA	1 OCT 85
F	CO 77592	DAW	15 AUG 94
G	CO 94212-K	DLT	10 NOV 99



**NOTE -**

**1- MOUNTING HOLES WILL ACCEPT PINS OR SCREWS OF .139 MAX. DIA. ON 1.000 ±.002 CENTERS.**

THIS DRAWING COVERS A PROPRIETARY ITEM AND IS THE PROPERTY OF MICRO SWITCH, A DIVISION OF HONEYWELL. THIS DRAWING IS NOT TO BE COPIED OR USED WITHOUT THE APPROVAL OF MICRO SWITCH.

**CHARACTERISTICS**

OPERATING FORCE-----7 - 9 OZ.  
RELEASE FORCE-----4 OZ. MIN.  
DIFFERENTIAL TRAVEL----.00020-.00035  
OVERTRAVEL-----.005 MIN.

**ELECTRICAL DATA**

CONTACT ARRANGEMENT  
S. P. N. O.

UNDERWRITERS' LAB. INC. LISTED RATING  
-L103- 15 A-125, 250 OR 480 VAC  
1/8 HP-125 VAC; 1/4 HP-250 VAC



**SCALE FULL**

DO NOT SCALE PRINT

UNLESS OTHERWISE SPECIFIED  
DIMENSIONS ARE IN INCHES  
**TOLERANCES ARE:**

ONE PLACE	(.0)	±.030
TWO PLACE	(.00)	±.015
THREE PLACE	(.000)	±.005
ANGLES		±

WEIGHT .050 LB.

FORMTEK

DRAWN

74-86

## X-ON Electronics

Largest Supplier of Electrical and Electronic Components

*Click to view similar products for [Basic / Snap Action Switches](#) category:*

*Click to view products by [Honeywell](#) manufacturer:*

Other Similar products are found below :

[5SM901-S12](#) [5SM9-S12N195](#) [602EN532](#) [602EN535-RB](#) [602HE5-RB1](#) [604HE162](#) [604HE223-6B](#) [624HE17-RB](#) [6HM82](#) [6HM89](#) [6SE1](#)  
[6SX1-H58](#) [70500216](#) [70599106](#) [71051](#) [MBH2731](#) [79211923](#) [79218589](#) [7AS12](#) [MIL30126AB6BBMD4A12XAU](#) [ML-1155](#) [ML-1376](#)  
[831010C3.0](#) [831090C2.EL](#) [83131904](#) [84212012](#) [8AS239](#) [8HM73-3](#) [8SX26-H33](#) [914CE1-6G](#) [PL-100](#) [11SM1077-H4](#) [11SM1077-H58](#)  
[11SM1-TN107](#) [11SM405](#) [11SM8423-H2](#) [11SX37-T](#) [11SX48-H58](#) [11SM2442-T](#) [11SM76-T](#) [11SM77-H58](#) [11SM863-T](#) [11SM866](#) [A7CN-](#)  
[1M-1-LEFT](#) [A831700C7.0](#) [121EN188-R](#) [1245.0120](#) [125EN56-RB](#) [D433V3RD](#) [1267.0101](#)