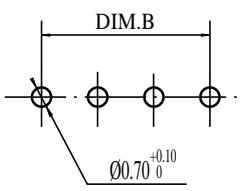
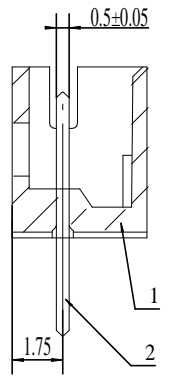
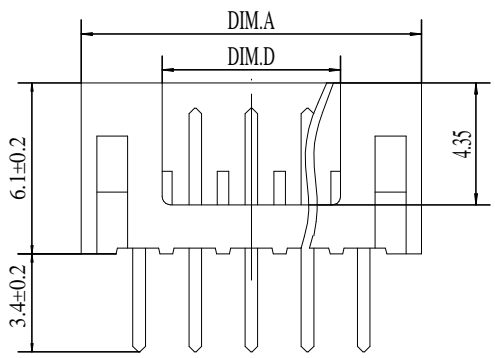
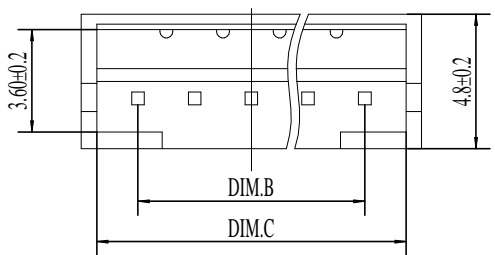


| REV. | EC# | DESCRIPTION | DATE      | DRAWN | CHECK | APPROVED |
|------|-----|-------------|-----------|-------|-------|----------|
| 1.00 |     | 初版发行        | 2020-8-28 | 瞿寿坤   | 胡海萍   | 胡海萍      |

| NUMBER OF PINS | DIM.A | DIM.B | DIM.C | DIM.D |
|----------------|-------|-------|-------|-------|
| 15P            | 32.0  | 28.0  | 30.9  | 26.3  |
| 14P            | 30.0  | 26.0  | 28.9  | 24.3  |
| 13P            | 28.0  | 24.0  | 26.9  | 22.3  |
| 12P            | 26.0  | 22.0  | 24.9  | 20.3  |
| 11P            | 24.0  | 20.0  | 22.9  | 18.3  |
| 10P            | 22.0  | 18.0  | 20.9  | 16.3  |
| 9P             | 20.0  | 16.0  | 18.9  | 14.3  |
| 8P             | 18.0  | 14.0  | 16.9  | 12.3  |
| 7P             | 16.0  | 12.0  | 14.9  | 10.3  |
| 6P             | 14.0  | 10.0  | 12.9  | 8.3   |
| 5P             | 12.0  | 8.0   | 10.9  | 6.3   |
| 4P             | 10.0  | 6.0   | 8.9   | 4.3   |
| 3P             | 8.0   | 4.0   | 6.9   | 2.3   |
| 2P             | 6.0   | 2.0   | 4.9   | 0.8   |



PCB LAYOUT

| GENERAL TOLERANCES |       |        |        |
|--------------------|-------|--------|--------|
| DIM                | TOL   | DIM    | DEG    |
| X                  |       | X°     | ±3.00° |
| X.X                | ±0.35 | X.X°   | ±2.00° |
| X.XX               | ±0.25 | X.XX°  | ±1.00° |
| X.XXX              | ±0.15 | X.XXX° |        |

技术要求:

- 1) 材质:见附表;
- 2) 电镀:见附表;
- 3) 塑件表面平整、光洁、无毛刺、气泡、烧焦、变形、浇口无拉伤、多料或缺料等不良现象;
- 4) 端子表面无氧化、电镀不良等现象。

适应基板厚度: 1.2mm~1.6mm  
 温度范围: -25℃~85℃  
 额定电压: 250V AC/DC  
 额定电流: 1A  
 绝缘电阻: >1000MΩ  
 耐压: 800V AC/minute

| 2   | PIN     | n PCS | 材质:黄铜,电镀:镀亮锡60u"MIN |
|-----|---------|-------|---------------------|
| 1   | Housing | 1 PCS | 材质:PA66 颜色:本色       |
| NO. | NAME    | QTY   | DESCRIPTION         |

## 深圳市虹成电子有限公司

|                  |     |           |                            |            |
|------------------|-----|-----------|----------------------------|------------|
| DRAW:            | 瞿寿坤 | 2020-8-28 | TITLE: WAFER PH2.0A 立式 DIP | DRAW NAME: |
| DESIGN:          | 瞿寿坤 | 2020-8-28 | SERIES: 1501 SERIES        | HCZ0256-9  |
| CHECK:           | 胡海萍 | 2020-8-28 |                            |            |
| APPROVED         | 胡海萍 | 2020-8-28 | P/N:                       | DRAW NO.   |
| CUSTOMER DRAWING |     |           | REV. 1.00                  | SCALE N/A  |
|                  |     | UNIT: mm  | SHEET: 1/1                 |            |

## X-ON Electronics

Largest Supplier of Electrical and Electronic Components

*Click to view similar products for [Headers & Wire Housings](#) category:*

*Click to view products by [Hong Cheng](#) manufacturer:*

Other Similar products are found below :

[0015917161](#) [0022155065](#) [57102-F02-18ULF](#) [58102-G61-06LF](#) [582553-1](#) [01.001.5753.1](#) [0050291907](#) [02.125.8002.8](#) [609-3404](#) [61062-3](#)  
[CSU011177004](#) [622-0430](#) [622-3653LF](#) [63453-116](#) [636-1030](#) [636-1427](#) [636-3427](#) [636-4007](#) [641938-9](#) [65495-038](#) [65692-001LF](#) [65781-018](#)  
[65781-047](#) [65817-010LF](#) [65817-015LF](#) [67095-007LF](#) [67601157](#) [68631-112](#) [68645-018](#) [699319-000](#) [70.362.1628.0](#) [70-4210](#) [70-4226B](#) [70-](#)  
[4853B](#) [71.350.2428.0](#) [733-134](#) [733-162](#) [760-3052](#) [MHR-64-VUAL](#) [80.063.4001.1](#) [800-90-001-10-001000](#) [801-43-002-10-013000](#)  
[801-43-006-10-002000](#) [803-43-024-10-001000](#) [803-93-012-10-001000](#) [8-1437020-4](#) [819-22-004-30-001101](#) [820-22-006-30-001101](#)  
[820-22-008-30-001101](#) [821-22-002-10-001101](#)