

Features

- $V_{DS} = -60V$
- $I_D = -0.17A$
- $R_{DS(on)} @ V_{GS} = -10V < 8\Omega$
- $R_{DS(on)} @ V_{GS} = -4.5V < 10\Omega$
- Trench Power LV MOSFET technology
- Low RDS(ON)
- Low Gate Charge

Applications

- Video monitor
- Load switch
- Power management

Mechanical Data

- Case: SOT-23
- Molding compound meets UL 94V-0 flammability rating, RoHS-compliant, halogen-free
- Terminals: Solder plated, solderable per MIL-STD-750, Method 2026

Maximum Ratings (Ta=25°C Unless otherwise specified)

PARAMETER		SYMBOL	UNIT	VALUE
Drain-source Voltage		V_{DS}	V	-60
Gate-source Voltage		V_{GS}	V	± 20
Drain Current	Ta=25°C	I_D	A	-0.17
	Ta=70°C			-0.14
Pulsed Drain Current ⁽¹⁾		I_{DM}	A	-0.68
Total Power Dissipation	Ta=25°C	P_d	mW	225
Thermal Resistance Junction-to-Ambient ⁽²⁾		$R_{\theta JA}$	°C / W	556
Storage temperature	T_{stg}	°C	—	-55 ~ +150
Junction temperature	T_j	°C	—	-55 ~ +150

Note :

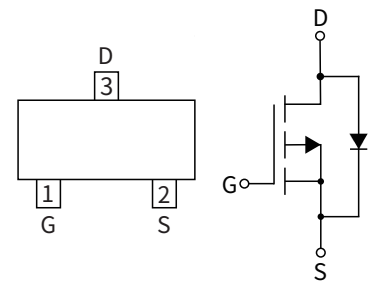
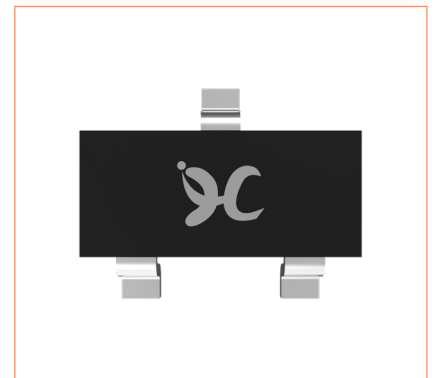
A. Pulse Test: Pulse Width $\leq 300\mu s$, Duty cycle $\leq 2\%$.

B. Device mounted on FR-4 PCB, 1 inch x 0.85 inch x 0.062 inch.

Ordering Information

PACKAGE	PACKAGE CODE	UNIT WEIGHT(g)	REEL(pcs)	BOX(pcs)	CARTON(pcs)	DELIVERY MODE
SOT-23	R1	0.008	3000	30000	120000	7"

SOT-23



▶ Static Parameter Characteristics (Ta=25°C Unless otherwise specified)

PARAMETER	SYMBOL	Condition	UNIT	Min	Typ	Max
Drain-Source Breakdown Voltage	BV_{DSS}	$V_{GS}=0V, I_D=-250\mu A$	V	-60	—	—
Zero Gate Voltage Drain Current	I_{DSS}	$V_{DS}=-60V, V_{GS}=0V$	μA	—	—	-1
Gate-Body Leakage Current	I_{GSS1}	$V_{GS}=\pm 20V, V_{DS}=0V$	nA	—	—	± 100
Gate Threshold Voltage	$V_{GS(th)}$	$V_{DS}=V_{GS}, I_D=-250\mu A$	V	-0.9	-1.4	-2.0
Static Drain-Source On-Resistance	$R_{DS(on)}$	$V_{GS}=-10V, I_D=-0.15A$	Ω	—	3.3	8
		$V_{GS}=4.5V, I_D=-0.15A$		—	3.5	10
Diode Forward Voltage	V_{SD}	$I_S=-0.17A, V_{GS}=0V$	V	—	—	-1.2
Maximum Body-Diode Continuous Current	I_S	—	A	—	—	-0.17

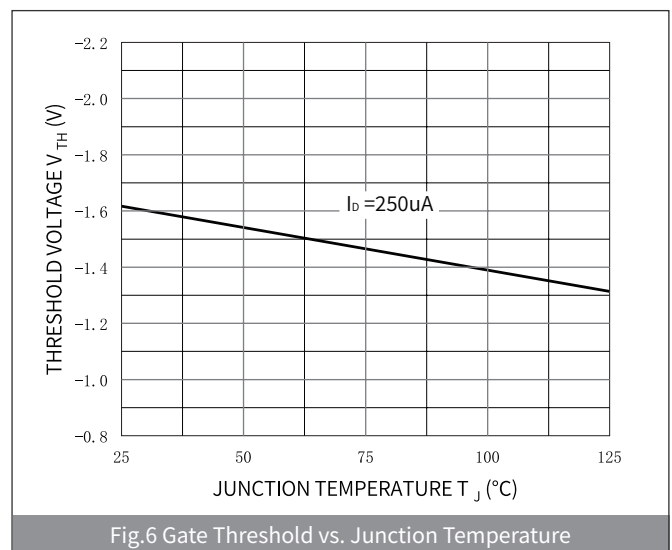
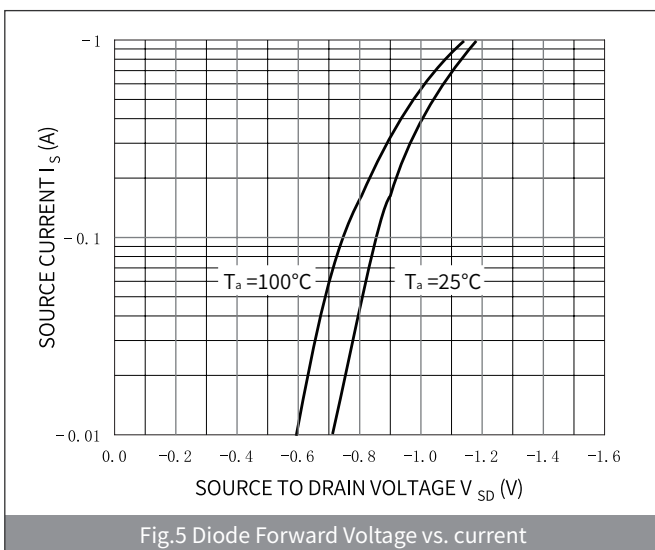
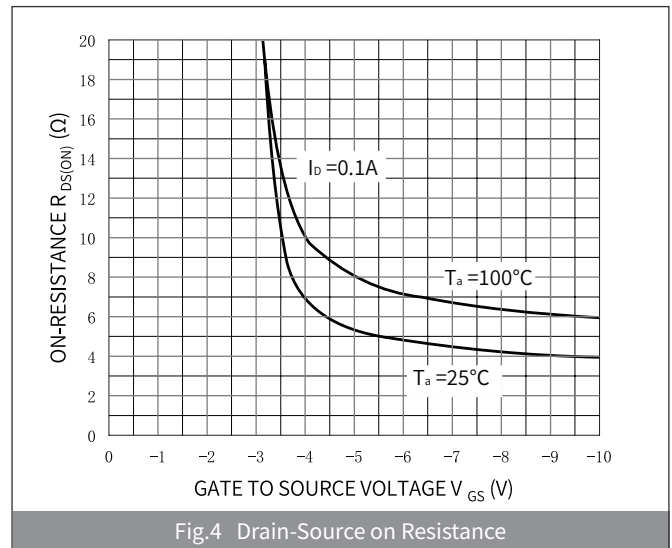
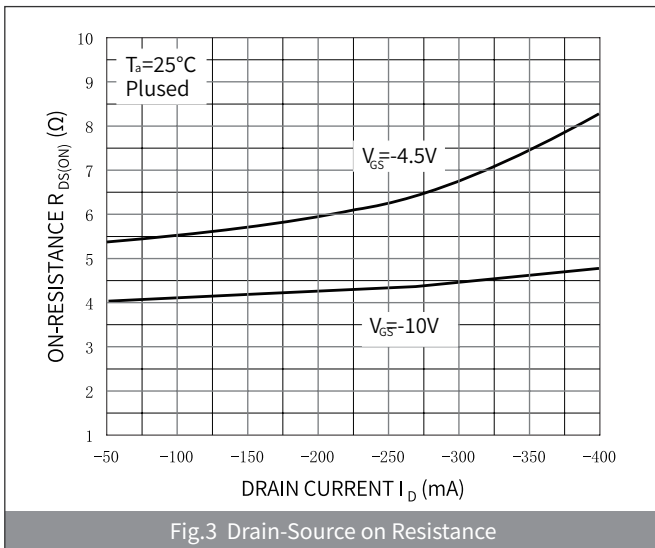
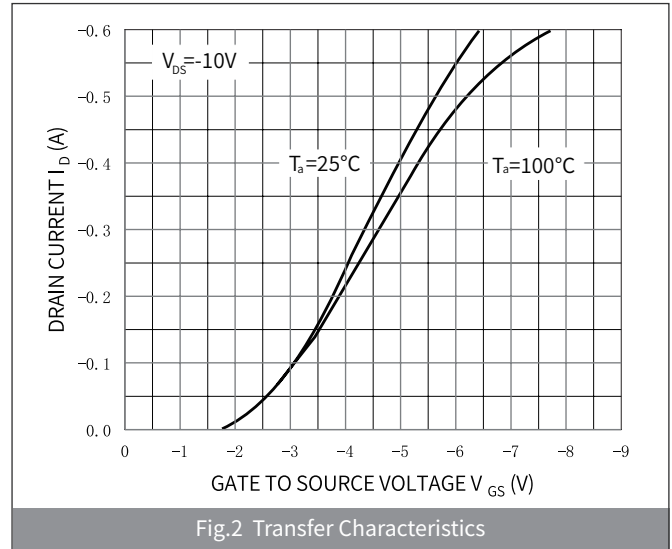
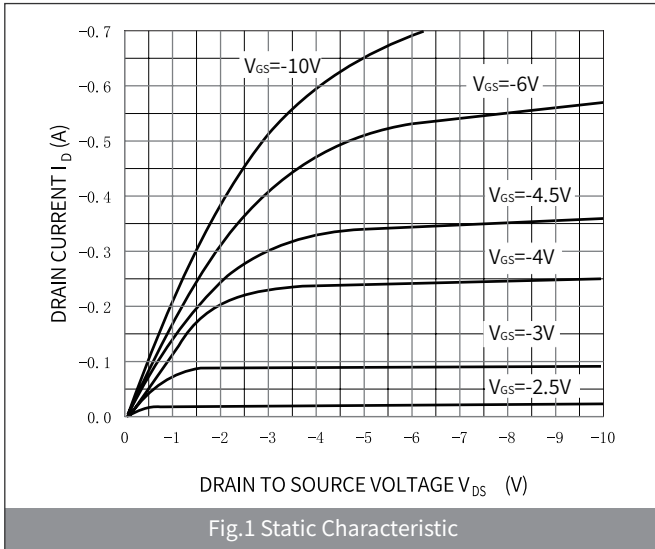
▶ Dynamic Parameters (Ta=25°C Unless otherwise specified)

PARAMETER	SYMBOL	Condition	UNIT	Min	Typ	Max
Input Capacitance	C_{iss}	$V_{DS}=-30V, V_{GS}=0V, f=1MHz$	μF	—	43	—
Output Capacitance	C_{oss}			—	2.9	—
Reverse Transfer Capacitance	C_{rss}			—	2.8	—

▶ Switching Parameters (Ta=25°C Unless otherwise specified)

PARAMETER	SYMBOL	Condition	UNIT	Min	Typ	Max
Total Gate Charge	Q_g	$V_{GS}=-10V, V_{DS}=0V, I_D=-0.15A$	nC	—	1.77	—
Gate-Source Charge	Q_{gs}			—	0.57	—
Gate-Drain Charge	Q_{gd}			—	0.18	—
Reverse Recovery Charge	Q_{rr}	$I_F=-0.15A, di/dt=-100A/\mu s$	nC	—	13	—
Reverse Recovery Time	t_{rr}			—	23	—
Turn-on Delay Time	$t_{D(on)}$	$V_{GS}=-4.5V, V_{DD}=-30V, I_D=-0.15A, R_{GEN}=2.5\Omega$	ns	—	8.6	—
Turn-on Rise Time	t_r			—	20	—
Turn-off Delay Time	$t_{D(off)}$			—	15	—
Turn-off fall Time	t_f			—	77	—

► Ratings And Characteristics Curves (Ta=25°C Unless otherwise specified)



► Package Outline Dimensions (SOT-23)

Symbol	Dimensions			
	Millimeters		Inches	
	Min.	Max.	Min.	Max.
A	0.90	1.15	0.035	0.045
A1	-	0.10	-	0.004
A2	0.90	1.05	0.035	0.041
b	0.30	0.50	0.012	0.020
c	0.10	0.20	0.004	0.008
D	2.80	3.00	0.110	0.118
E	1.20	1.40	0.047	0.055
E1	2.25	2.55	0.089	0.100
e	0.950TYP		0.037TYP	
e1	1.80	2.00	0.071	0.079
L	0.550REF		0.022REF	
L1	0.30	0.50	0.012	0.020
θ	-	8°	-	8°

► Suggested Pad Layout

Symbol	Dimensions			
	Millimeters		Inches	
	Min.	Max.	Min.	Max.
J	0.80	-	0.031	-
K	-	0.90	-	0.035
M	2.00	-	0.078	-
N	-	1.90	-	0.074

X-ON Electronics

Largest Supplier of Electrical and Electronic Components

Click to view similar products for [MOSFET](#) category:

Click to view products by [hongjiacheng](#) manufacturer:

Other Similar products are found below :

[IRFD120](#) [JANTX2N5237](#) [BUK455-60A/B](#) [MIC4420CM-TR](#) [VN1206L](#) [NDP4060](#) [SI4482DY](#) [IPS70R2K0CEAKMA1](#) [SQD23N06-31L-GE3](#)
[TK16J60W,S1VQ\(O](#) [2SK2614\(TE16L1,Q\)](#) [DMN1017UCP3-7](#) [DMN1053UCP4-7](#) [SQJ469EP-T1-GE3](#) [NTE2384](#) [DMC2700UDMQ-7](#)
[DMN2080UCB4-7](#) [DMN61D9UWQ-13](#) [US6M2GTR](#) [DMN31D5UDJ-7](#) [DMP22D4UFO-7B](#) [DMN1006UCA6-7](#) [DMN16M9UCA6-7](#)
[STF5N65M6](#) [IRF40H233XTMA1](#) [STU5N65M6](#) [DMN6022SSD-13](#) [DMN13M9UCA6-7](#) [DMTH10H4M6SPS-13](#) [DMN2990UFB-7B](#)
[IPB80P04P405ATMA2](#) [2N7002W-G](#) [MCAC30N06Y-TP](#) [MCQ7328-TP](#) [NTMC083NP10M5L](#) [BXP7N65D](#) [BXP4N65F](#) [AOL1454G](#)
[WMJ80N60C4](#) [BXP2N20L](#) [BXP2N65D](#) [BXT1150N10J](#) [BXT1700P06M](#) [TSM60NB380CP](#) [ROG](#) [RQ7L055BGTGR](#) [DMNH15H110SK3-13](#)
[SLF10N65ABV2](#) [BSO203SP](#) [BSO211P](#) [IPA60R230P6](#)