

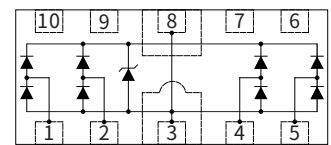
Features

- Low capacitance: 0.6pF(Typ.)
- Reverse Working Voltage: 5V
- Uni-directional protection
- DFN2510 surface mount package
- IEC 61000-4-2 (ESD Air): $\pm 15\text{kV}$
- IEC 61000-4-2 (ESD Contact): $\pm 10\text{kV}$
- IEC 61000-4-5 (I/O to GND Lightning 8/20 μs): 4.0A

Applications

- USB 3.0, USB 2.0
- HDMI 1.3/1.4
- Display Port 1.3
- eSATA
- Unified Display Interface (UDI)
- PDAs

DFN2510

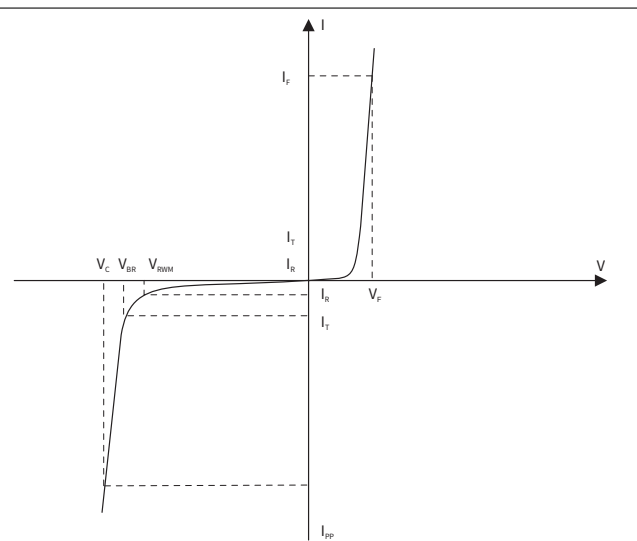


Maximum Ratings (Ta=25°C Unless otherwise specified)

SYMBOL	PARAMETER	CONDITIONS	VALUE	UNIT
V_{ESD}	Electrostatic Discharge Voltage	ESD per IEC 61000-4-2(Air)	± 15	KV
		ESD per IEC 61000-4-2(Contact)	± 10	KV
P_{PP}	Peak Pulse Power	$t_p = 8/20 \mu\text{s}$	56	W
I_{PP}	Rated Peak Pulse Current	$t_p = 8/20 \mu\text{s}$	4.0	A
T_j	Operating JunctionTemperature Range	—	-55 to +125	°C
T_{stg}	Storage Temperature Range	—	-55 to +150	°C

Electrical Parameter

SYMBOL	PARAMETER
V_C	Clamping Voltage @ I_{PP}
V_{BR}	Breakdown Voltage @ I_T
I_{PP}	Peak Pulse Current
I_T	Test Current
I_R	Reverse Leakage Current @ VRWM
V_{RWM}	Peak Reverse Working Voltage
P_{PP}	Peak Pulse Power Dissipation
C_J	Junction Capacitance @ $V_R=0\text{V}, f=1\text{MHz}$
I_F	Forward Current
V_F	Forward Voltage @ I_F

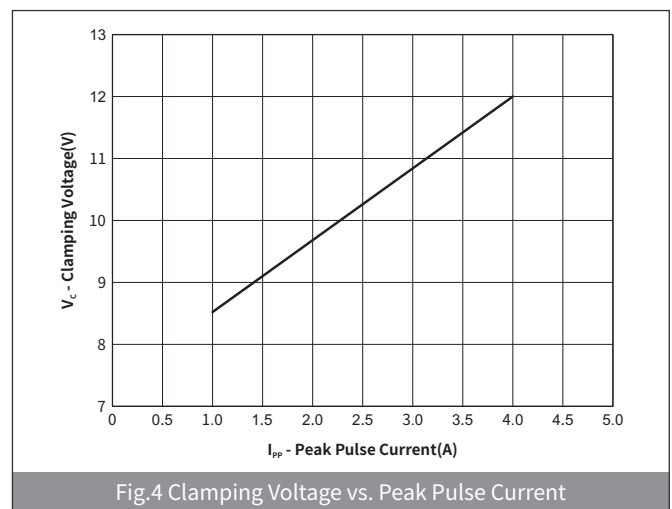
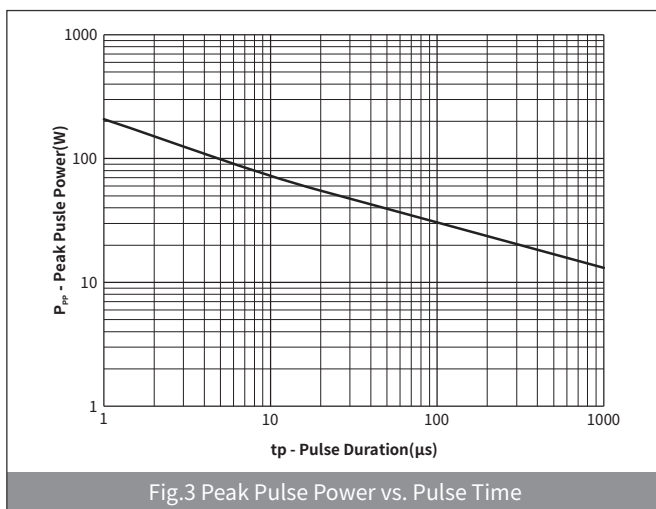
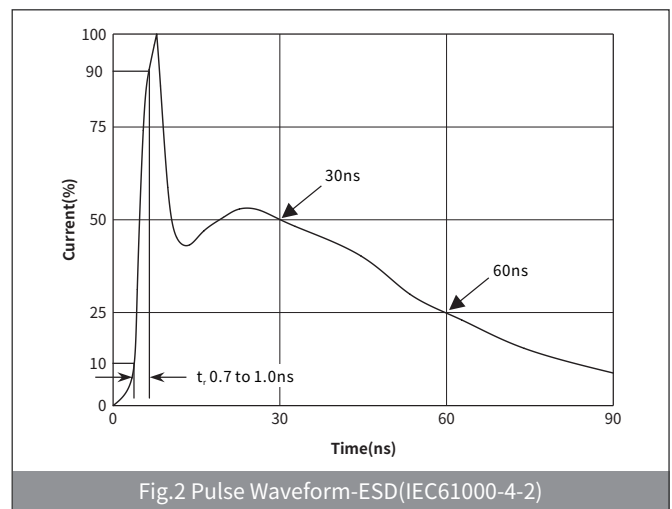
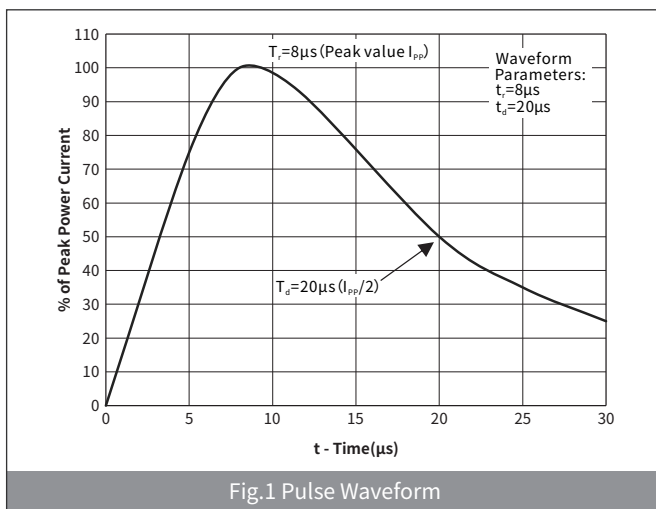


Electrical Characteristics ($T_A=25^\circ\text{C}$ Unless otherwise specified)

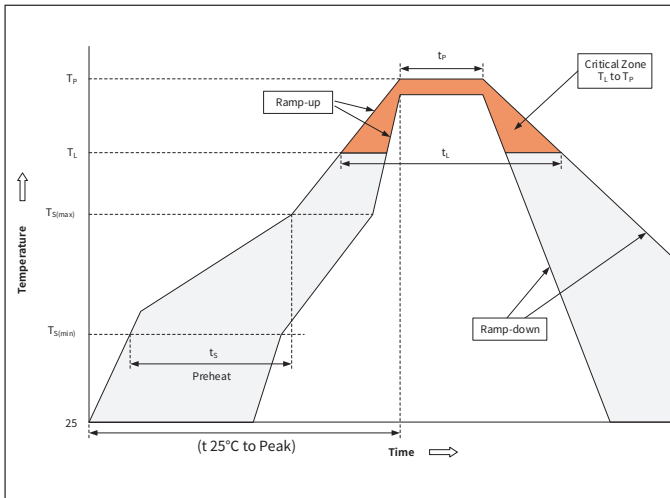
PARAMETER	SYMBOL	CONDITION	MIN.	TYP.	MAX.	UNIT
Peak Reverse Working Voltage	V_{RWM}	$T_A=25^\circ\text{C}$	—	—	5.0	V
Breakdown Voltage	V_{BR}	$I_T=1\text{mA}; T_A=25^\circ\text{C}$	6.0	—	—	V
Reverse Leakage Current	I_R	$V_{RWM}=5.0\text{V}; T_A=25^\circ\text{C}$	—	—	1.0	μA
Clamping Voltage	V_C	$I_{PP}=1\text{A}, t_P=8/20\mu\text{s}$, Any I/O to GND, Positive	—	8.5	12	V
		$I_{PP}=4\text{A}, t_P=8/20\mu\text{s}$, Any I/O to GND, Positive	—	12	14	V
Junction Capacitance	C_J	$V_R=0\text{V}, f=1\text{MHz}$, I/O to I/O	—	0.4	0.5	pF
		$V_R=0\text{V}, f=1\text{MHz}$, I/O to GND	—	0.6	0.8	pF

Ordering Information

PREFERRED P/N	PACKAGE	SIZE(mm)	DELIVERY MODE	MPQ(PCS)
H5VU25U	DFN2510	2.50×1.00×0.50	7" REEL	3,000

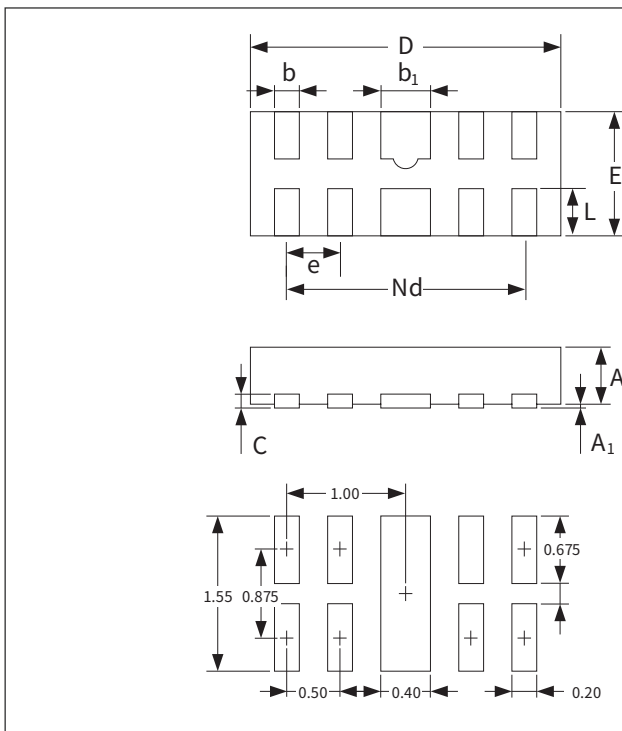
Ratings And Characteristics Curves ($T_A=25^\circ\text{C}$ Unless otherwise specified)


► Recommended Soldering Conditions



Profile Feature		Pb-Free Assembly
Pre-heat	Temperature Min ($T_{S(min)}$)	+150°C
	Temperature Max ($T_{S(max)}$)	+200°C
	Time (Min to Max) (t_s)	60-180 secs.
Average ramp up rate (Liquid us Temp (T_L) to peak)		3°C /sec. Max
$T_{S(max)}$ to T_L - Ramp-up Rate		3°C /sec. Max
Reflow	Temperature (T_L) (Liquid us)	+217°C
	Temperature (t_L)	60-150 secs.
Peak Temp (T_P)		+260(+0/-5)°C
Time within 5°C of actual Peak Temp (t_p)		30 secs. Max
Ramp-down Rate		6°C /sec. Max
Time 25°C to Peak Temp (T_P)		8 min. Max
Do not exceed		+260°C

► Package Outline Dimensions (DFN2510)



Symbol	Millimeters(mm)		
	Min.	Type.	Max.
D	2.45	2.50	2.55
E	0.95	1.00	1.05
b_1	0.35	0.40	0.45
b	0.15	0.20	0.25
L	0.33	0.38	0.43
Nd	2.00 BSC		
e	0.50 BSC		
A	0.45	0.50	0.55
c	0.15 REF		
A_1	0.00	-	0.05

Note :

This soldering footprint is for reference purposes only. Please consult your manufacturing group to ensure your PCB design guidelines are met.

X-ON Electronics

Largest Supplier of Electrical and Electronic Components

Click to view similar products for [ESD Suppressors / TVS Diodes](#) category:

Click to view products by [hongjiacheng](#) manufacturer:

Other Similar products are found below :

[60KS200C](#) [D18V0L1B2LP-7B](#) [D5V0F4U5P5-7](#) [NTE4902](#) [P4KE27CA](#) [P6KE11CA](#) [P6KE8.2A](#) [SA60CA](#) [SA64CA](#) [SMBJ12CATR](#)
[SMBJ33CATR](#) [SMBJ6.5A](#) [SMBJ8.0A](#) [ESD101-B1-02ELS E6327](#) [ESD112-B1-02EL E6327](#) [ESD7451N2T5G](#) [19180-510](#) [CPDT-5V0USP-](#)
[HF](#) [3.0SMCJ33CA-F](#) [3.0SMCJ36A-F](#) [HSPC16701B02TP](#) [JANTX1N6126A](#) [D3V3Q1B2DLP3-7](#) [D55V0M1B2WS-7](#) [SCM1293A-04SO](#)
[ESD200-B1-CSP0201 E6327](#) [SM12-7](#) [CEN955 W/DATA](#) [VESD12A1A-HD1-GS08](#) [CPDQC5V0-HF](#) [D1213A-01LP4-7B](#) [ESD101-B1-02EL](#)
[E6327](#) [AOZ8808DI-03](#) [5KP15A](#) [5KP48A](#) [5KP90A](#) [ESD3V3D7-TP](#) [15KPA36A-LF](#) [P4KE56CA](#) [P4KE68A](#) [P4KE91CATR](#) [P6KE120A](#)
[P6KE13CA](#) [P6KE43CA](#) [P6KE6.8CA](#) [P6KE8.2](#) [P6SMBJ20CA](#) [JANTX1N6072A](#) [SR2835ESKG](#) [SA90CA](#)