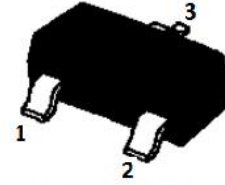


Programmable Precision Reference

Features:

- Programmable output Voltage to 36 V
- Low dynamic output impedance
- Sink current capability of 1 to 100 mA
- Low output noise voltage
- Fast turn on response



1. Reference 2. Cathode 3. Anode
SOT-23 Plastic Package

Absolute Maximum Ratings ($T_a = 25\text{ }^\circ\text{C}$, unless otherwise noted.)

Parameter	Symbol	Value	Unit
Cathode Voltage	V_{KA}	37	V
Cathode Current Range (Continuous)	I_{KA}	- 100 to + 150	mA
Reference Input Current Range	I_{REF}	- 0.05 to + 10	mA
Power Dissipation	P_D	350	mW
Operating Temperature Range	T_{opr}	- 25 to + 85	$^\circ\text{C}$
Junction Temperature	T_j	150	$^\circ\text{C}$
Storage Temperature Range	T_{stg}	- 65 to + 150	$^\circ\text{C}$

Recommended Operating Conditions

Parameter	Symbol	Min.	Max.	Unit
Cathode Voltage	V_{KA}	V_{REF}	36	V
Cathode Current	I_{KA}	1	100	mA

Characteristics at $T_a = 25\text{ }^\circ\text{C}$

Parameter	Symbol	Min.	Typ.	Max.	Unit
Reference Input Voltage at $V_{KA} = V_{REF}$, $I_{KA} = 10\text{ mA}$	V_{REF}	2.483	2.495	2.507	V
Reference Input Voltage at $V_{KA} = V_{REF}$, $I_{KA} = 10\text{ mA}$	V_{REF}	2.47	2.495	2.52	V
Reference Input Voltage at $V_{KA} = V_{REF}$, $I_{KA} = 10\text{ mA}$	V_{REF}	2.445	2.495	2.545	V
Deviation of Reference Input Voltage Over Temperature at $V_{KA} = V_{REF}$, $I_{KA} = 10\text{ mA}$, $-25\text{ }^\circ\text{C} \leq T_a \leq +85\text{ }^\circ\text{C}$	$\frac{\Delta V_{REF}}{\Delta T}$	-	4.5	17	mV
Ratio of Change in Reference Input Voltage to the Change in Cathode Voltage at $I_{KA} = 10\text{ mA}$	$\frac{\Delta V_{REF}}{\Delta V_{KA}}$	-	-1.0	-2.7	mV/V
Reference Input Current at $I_{KA} = 10\text{ mA}$, $R_1 = 10\text{ K}\Omega$, $R_2 = \infty$	I_{REF}	-	1.5	4	μA
Deviation of Reference Input Current Over Full Temperature at $I_{KA} = 10\text{ mA}$, $R_1 = 10\text{ K}\Omega$, $R_2 = \infty$, $-25\text{ }^\circ\text{C} \leq T_a \leq +85\text{ }^\circ\text{C}$	$\Delta I_{REF}/\Delta T$	-	0.4	1.2	μA
Minimum Cathode Current for Regulation at $V_{KA} = V_{REF}$	$I_{KA(min)}$	-	0.45	1	mA
Off-Stage Cathode Current at $V_{KA} = 36\text{ V}$, $V_{REF} = 0$	$I_{KA(OFF)}$	-	0.05	1	μA
Dynamic Impedance at $V_{KA} = V_{REF}$, $I_{KA} = 1\text{ to }100\text{ mA}$, $f \leq 1\text{ KHz}$	Z_{KA}	-	0.15	0.5	Ω



CHINA BASE
INTERNATIONAL

SOT-23



MMTL431M

www.china-base.com.hk

Fig 1 Cathode Current Vs Cathode Voltage

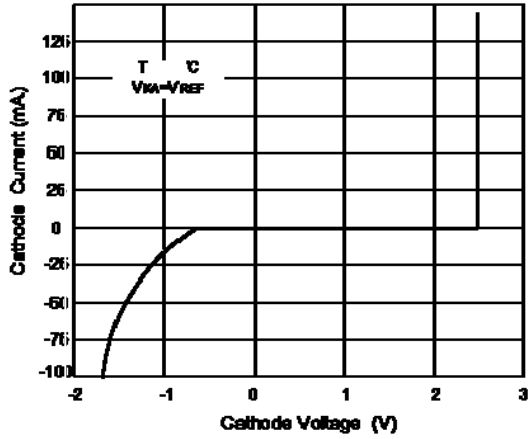


Fig 2 Cathode Current Vs Cathode Voltage

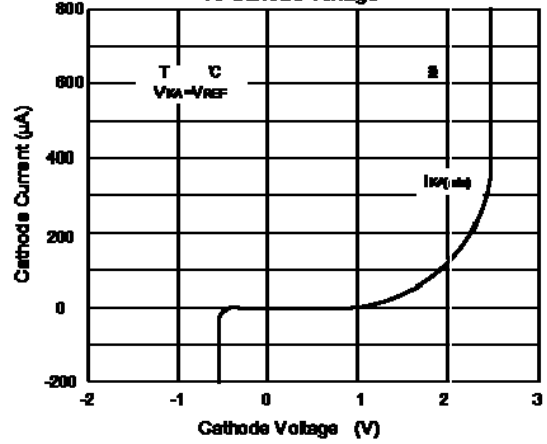


Fig 3 Change in Reference Input Voltage Vs Cathode voltage

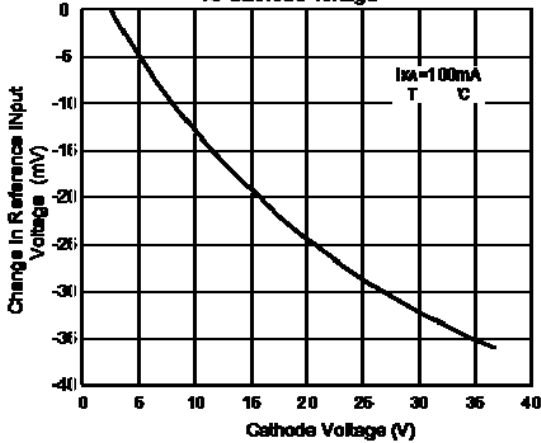


Fig 4 Pulse Response

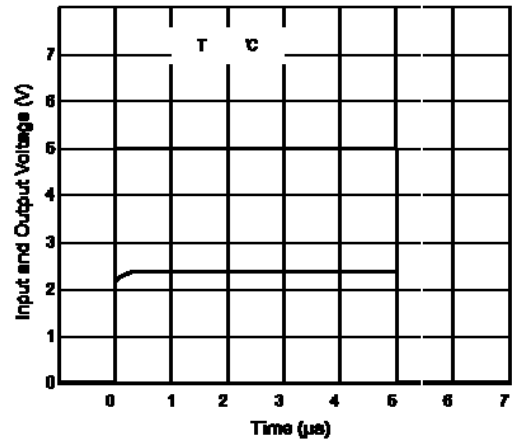


Fig 5 Dynamic Impedance Vs Frequency

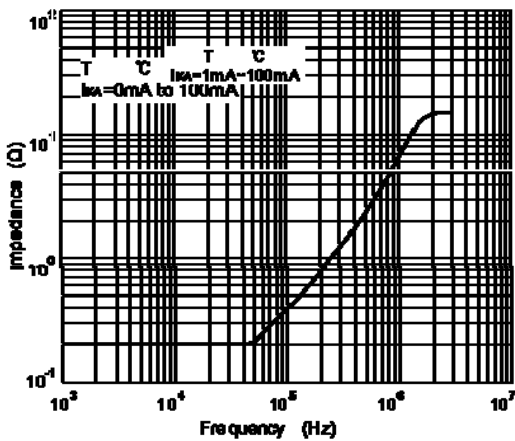
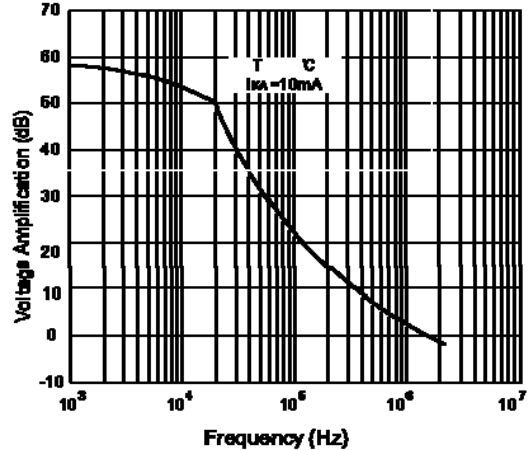


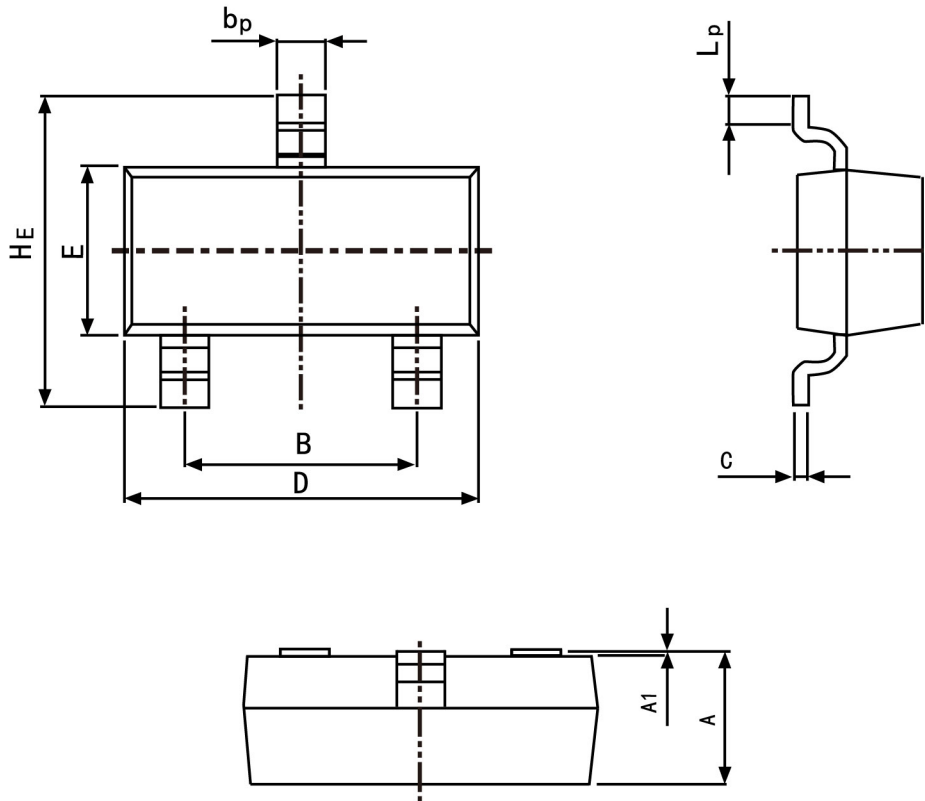
Fig 6 Small Signal Voltage Amplification Vs Frequency



PACKAGE OUTLINE

Plastic surface mounted package; 3 leads

SOT-23



Symbol	Dimension in Millimeters	
	Min	Max
A	0.95	1.40
B	1.78	2.04
bp	0.35	0.50
C	0.08	0.19
D	2.70	3.10
E	1.20	1.65
HE	2.20	3.00
A1	0.100	0.013
Lp	0.20	0.50

X-ON Electronics

Largest Supplier of Electrical and Electronic Components

Click to view similar products for [Voltage References](#) category:

Click to view products by [Hong Kong Chuangji](#) manufacturer:

Other Similar products are found below :

[AS431ARTR-E1](#) [AZ431BR-ATRE1](#) [5962-8686103XC](#) [NCV431BVDMR2G](#) [REF01J/883](#) [SC431ILPRAG](#) [AP432AQG-7](#) [LM4040B25QFTA](#)
[TL431BL3T](#) [TL431ACZ](#) [KA431SLMF2TF](#) [KA431SMF2TF](#) [KA431SMFTF](#) [LM4040QCEM3-3.0/NOPB](#) [LM4041C12ILPR](#)
[LM4050AIM3X-5.0/NOPB](#) [LM4120AIM5-2.5/NOP](#) [LM431SCCMFX](#) [ZXRE250BSA-7](#) [ZXRE125DN8TA](#) [TS3330AQPR](#) [ZXRE250ASA-7](#)
[ZTL431ASE5TA](#) [ADR3512WCRMZ-R7](#) [REF3012AIDBZR](#) [LM385BM-2.5/NOPB](#) [LM385D-2.5R2G](#) [LM4040AIM3-10.0](#) [LM4040CIM3-10.0](#) [LM4040CIM3X-2.0/NOPB](#) [LM4041DH5TA](#) [LM4041QDIM3-ADJ/NO](#) [LM4051BIM3-ADJ/NOPB](#) [LM4051CIM3X-1.2/NOPB](#)
[LM4128CMF-1.8/NOPB](#) [LM4132DMF-1.8/NOPB](#) [LM4132EMF-1.8/NOPB](#) [LM4132EMF-2.0/NOPB](#) [LM431CIM](#) [LM385BD-2.5R2G](#)
[LM385M-2.5/NOPB](#) [LM4030AMF-4.096/NOPB](#) [LM4040D30ILPR](#) [AP432YG-13](#) [AP431IANTR-G1](#) [AP431AWG-7](#) [AS431ANTR-G1](#)
[AS431AZTR-G1](#) [AS431BZTR-E1](#) [AN431BN-ATRG1](#)