

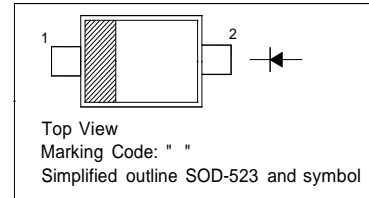
## SD103AWT...SD103CWT Surface Mount Schottky Barrier Diodes

### Features

- Low Forward Voltage

#### PINNING

PIN	DESCRIPTION
1	Cathode
2	Anode



### Absolute Maximum Ratings ( $T_a = 25^\circ\text{C}$ )

Parameter	Symbol	Value	Unit	
Peak Repetitive Reverse Voltage	$V_{RRM}$	SD103AWT SD103BWT SD103CWT	40 30 20	V
Reverse Voltage		SD103AWT SD103BWT SD103CWT	40 30 20	V
Average Forward Rectified Current		$I_{F(AV)}$	350	mA
Non-Repetitive Peak Forward Surge Current at $t = 1$ s	$I_{FSM}$	2	A	
Power Dissipation	$P_{tot}$	200	mW	
Operating and Storage Temperature Range	$T_j, T_{stg}$	- 65 to + 125	$^\circ\text{C}$	

### Characteristics at $T_a = 25^\circ\text{C}$

Parameter	Symbol	Min.	Typ.	Max.	Unit	
Reverse Breakdown Voltage at $I_R = 10\mu\text{A}$	$V_{(BR)R}$	SD103AWT SD103BWT SD103CWT	40 30 20	- - -	V	
Reverse Leakage Current at $V_R = 30\text{V}$ at $V_R = 20\text{V}$ at $V_R = 10\text{V}$		$I_R$	SD103AWT SD103BWT SD103CWT	- - -	5 5 5	$\mu\text{A}$
Forward Voltage at $I_F = 20\text{mA}$ at $I_F = 200\text{mA}$			$V_F$	- -	- -	0.37 0.6
Total Capacitance at $V_R = 0\text{V}$ , $f = 1\text{MHz}$	$C_T$			-	50	-
Reverse Recovery Time at $I_F = I_R = 200\text{mA}$ , $I_{rr} = 0.1 I_R$ , $R_L = 100\ \Omega$	$t_{rr}$	-	10	-	ns	

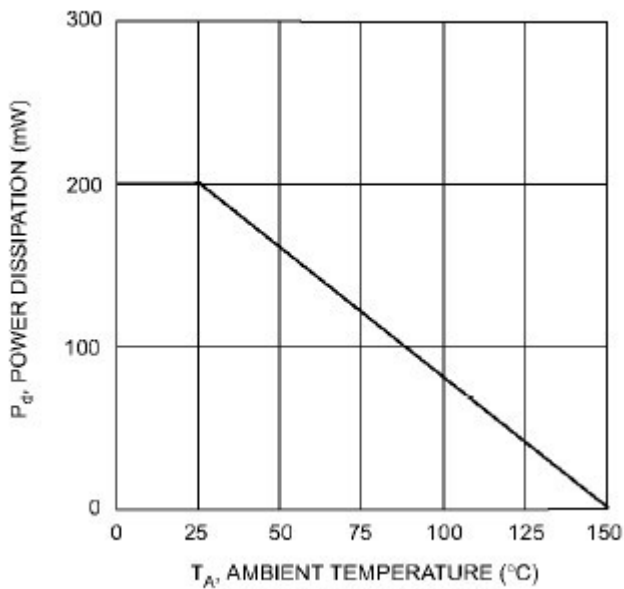


Fig. 1 Power Derating Curve

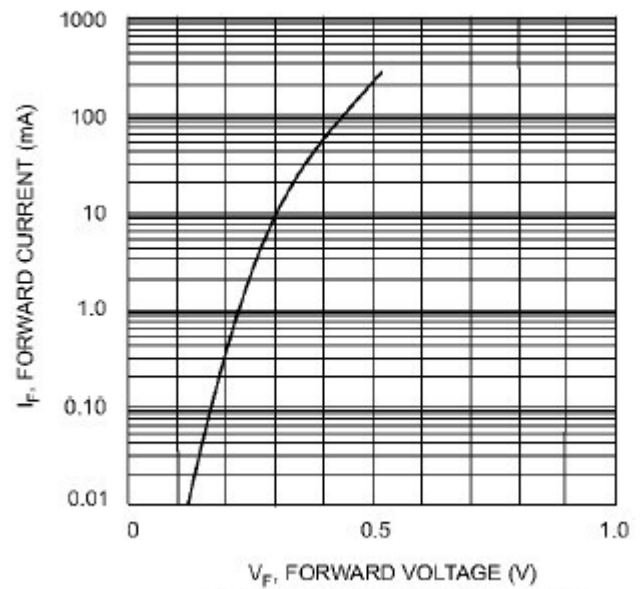


Fig. 2 Typical Forward Characteristics

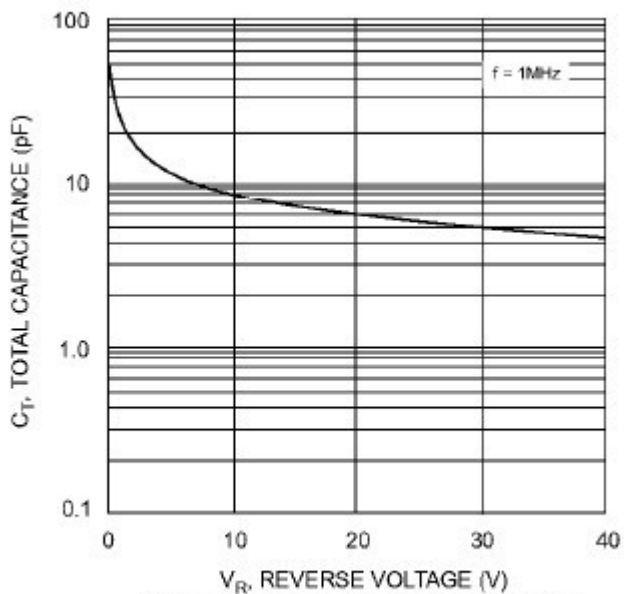
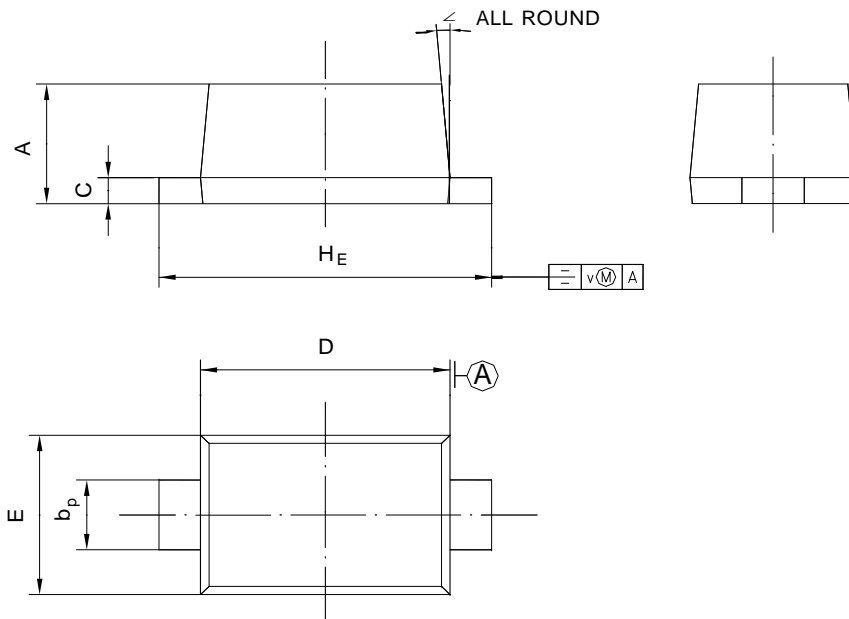


Fig. 3 Total Capacitance vs Reverse Voltage

**PACKAGE OUTLINE**

**SOD-523**

Plastic surface mounted package; 2 leads



UNIT	A	$b_p$	C	D	E	$H_E$	V	$\angle$
mm	0.70 0.60	0.4 0.3	0.135 0.100	1.25 1.15	0.85 0.75	1.7 1.5	0.1	5°

## X-ON Electronics

Largest Supplier of Electrical and Electronic Components

*Click to view similar products for [Schottky Diodes & Rectifiers](#) category:*

*Click to view products by [Hong Kong Chuangji](#) manufacturer:*

Other Similar products are found below :

[MA4E2039](#) [MA4E2508M-1112](#) [MBR10100CT-BP](#) [MBR1545CT](#) [MMBD301M3T5G](#) [RB160M-50TR](#) [BAS16E6433HTMA1](#) [BAS 3010S-02LRH E6327](#) [BAT 54-02LRH E6327](#) [IDL02G65C5XUMA1](#) [NSR05F40QNXT5G](#) [NSVR05F40NXT5G](#) [NTE555](#) [JANS1N6640](#) [SB07-03C-TB-H](#) [SK310-T](#) [SK33A-TP](#) [SK34B-TP](#) [SS3003CH-TL-E](#) [PDS3100Q-7](#) [GA01SHT18](#) [CRS10I30A\(TE85L,QM](#) [MA4E2501L-1290](#) [MBRB30H30CT-1G](#) [JANTX1N5712-1](#) [SB007-03C-TB-E](#) [SK33B-TP](#) [SK35A-TP](#) [SK38B-LTP](#) [NTE505](#) [NTSB30U100CT-1G](#) [VS-6CWQ10FNHM3](#) [CRG04\(T5L,TEMQ\)](#) [ACDBA1100LR-HF](#) [ACDBA1200-HF](#) [ACDBA240-HF](#) [ACDBA3100-HF](#) [CDBQC0530L-HF](#) [ACDBA260LR-HF](#) [ACDBA1100-HF](#) [MA4E2502L-1246](#) [10BQ015-M3/5BT](#) [NRVB130LSFT1G](#) [CRS08TE85LQM](#) [PMAD1108-LF](#) [B120Q-13-F](#) [1N5819T-G](#) [B0530WSQ-7-F](#) [PDS1040Q-13](#) [B160BQ-13-F](#)