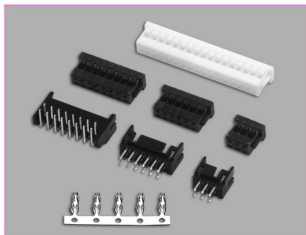


### 技术参数 SPECIFICATIONS

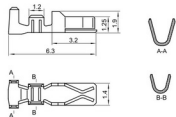
- 线数 (Poles) : 4~34(60)
- 适用线规 (Applicable wires) : AWG28#~22#
- 适应基板厚度 (Applicable PC board thickness) : 1.6mm
- 温度范围 (Temperature range) : -25℃~85℃
- 额定电压 (Voltage rating) : 250V.Ac/Dc
- 额定电流 (Current rating) : 3A
- 接触电阻 (Contact resistance) :  $\leq 0.02\Omega$
- 绝缘电阻 (Insulation resistance) :  $\geq 1000M\Omega$
- 耐压 (Withstand voltage) : 1000V.Ac/1min
- 材料 (Material) :
  - 孔座 (Housing) : 尼龙 (PA66) UL94V-2(0)
  - 针座 (Wafer) : 尼龙 (PA66) UL94V-2(0)
  - 端子 (Terminal) : 磷青铜 (Phos.bronze Tin/plated)



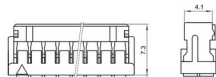
#### 端子 TERMINAL (YST200, DF11)

| 型号<br>Type | 适用线规<br>Applicable wires<br>mm <sup>2</sup> AWC# | 电线外径<br>O.D of wire ins<br>mm | 数量<br>Quantity |
|------------|--|-------------------------------|----------------|
| HX20012-PT | 0.08~0.33  | 28~22                         | 12000PCS/盘     |

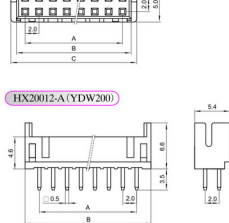
#### HX20012-PT (YST200, DF11)



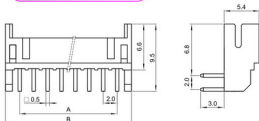
#### HX20012-Y (YDH200)



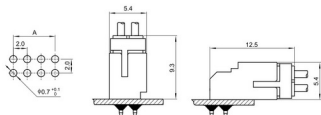
#### HX20012-A (YDW200)



#### HX20012-WA (YDAW200)



### 安装尺寸 MOUNTING MEASUREMENT



#### 孔座 HOUSING (YDH200)

| 线数<br>Poles | 型号<br>Type  | 尺寸 Dimensions (mm) |      |      |
|-------------|-------------|--------------------|------|------|
|             |             | A                  | B    | C    |
| 4           | HX20012-4Y  | 2.0                | 4.4  | 6.0  |
| 6           | HX20012-6Y  | 4.0                | 6.4  | 8.0  |
| 8           | HX20012-8Y  | 6.0                | 8.4  | 10.0 |
| 10          | HX20012-10Y | 8.0                | 10.4 | 12.0 |
| 12          | HX20012-12Y | 10.0               | 12.4 | 14.0 |
| 14          | HX20012-14Y | 12.0               | 14.4 | 16.0 |
| 16          | HX20012-16Y | 14.0               | 16.4 | 18.0 |
| 18          | HX20012-18Y | 16.0               | 18.4 | 20.0 |
| 20          | HX20012-20Y | 18.0               | 20.4 | 22.0 |
| 22          | HX20012-22Y | 20.0               | 22.4 | 24.0 |
| 24          | HX20012-24Y | 22.0               | 24.4 | 26.0 |
| 26          | HX20012-26Y | 24.0               | 26.4 | 28.0 |
| 28          | HX20012-28Y | 26.0               | 28.4 | 30.0 |
| 30          | HX20012-30Y | 28.0               | 30.4 | 32.0 |
| 32          | HX20012-32Y | 30.0               | 32.4 | 34.0 |
| 34          | HX20012-34Y | 32.0               | 34.4 | 36.0 |
| ...         | ...         | ...                | ...  | ...  |
| 60          | HX20012-60Y | 58.0               | 60.4 | 62.0 |

#### 针座 WAFER (YDW200, YDAW200)

| 线数<br>Poles | 型号<br>Type  | 尺寸 Dimensions (mm) |           |
|-------------|-------------|--------------------|-----------|
|             |             | 直式 (180°)          | 弯式 (90°)  |
| 4           | HX20012-4A  | HX20012-4WA        | 2.0 6.0   |
| 6           | HX20012-6A  | HX20012-6WA        | 4.0 8.0   |
| 8           | HX20012-8A  | HX20012-8WA        | 6.0 10.0  |
| 10          | HX20012-10A | HX20012-10WA       | 8.0 12.0  |
| 12          | HX20012-12A | HX20012-12WA       | 10.0 14.0 |
| 14          | HX20012-14A | HX20012-14WA       | 12.0 16.0 |
| 16          | HX20012-16A | HX20012-16WA       | 14.0 18.0 |
| 18          | HX20012-18A | HX20012-18WA       | 16.0 20.0 |
| 20          | HX20012-20A | HX20012-20WA       | 18.0 22.0 |
| 22          | HX20012-22A | HX20012-22WA       | 20.0 24.0 |
| 24          | HX20012-24A | HX20012-24WA       | 22.0 26.0 |
| 26          | HX20012-26A | HX20012-26WA       | 24.0 28.0 |
| 28          | HX20012-28A | HX20012-28WA       | 26.0 30.0 |
| 30          | HX20012-30A | HX20012-30WA       | 28.0 32.0 |
| 32          | HX20012-32A | HX20012-32WA       | 30.0 34.0 |
| 34          | HX20012-34A | HX20012-34WA       | 32.0 36.0 |
| ...         | ...         | ...                | ...       |
| 60          | HX20012-60A | HX20012-60WA       | 58.0 62.0 |

## X-ON Electronics

Largest Supplier of Electrical and Electronic Components

*Click to view similar products for [Headers & Wire Housings](#) category:*

*Click to view products by [Hongxing](#) manufacturer:*

Other Similar products are found below :

[95000-104TRLF](#) [10135584-644402LF](#) [DF62W-EP2022PCA](#) [95000-106TRLF](#) [DF62W-2022SCA](#) [DF62W-EP2022PC](#) [2203348](#) [DF62W-2022SC](#) [1084018](#) [1029039](#) [1084017](#) [802-10-012-10-002000](#) [1112640](#) [1112639](#) [891-007-9SS-BST1T](#) [000-34000](#) [0008550134](#) [0009482033](#) [0009507031](#) [57102-F02-18ULF](#) [57102-S06-03LF](#) [57202-S52-04LF](#) [PCN6-15S-2.5E](#) [0039019024](#) [58102-G61-06LF](#) [582553-1](#) [0009485154](#) [0009508121](#) [0022285053](#) [0050291907](#) [018731A](#) [LY20-4P-DT1-P1E-BR](#) [02.125.8002.8](#) [60101931](#) [60598-1 \(Cut Strip\)](#) [M1625-3R/100](#) [61062-3](#) [61082-181009](#) [CSU011177004](#) [636-1427](#) [638009-1](#) [641938-9](#) [641991-4](#) [644168-1](#) [644827-2](#) [647662-1](#) [65039-019ELF](#) [65692-001LF](#) [65781-018](#) [65781-047](#)