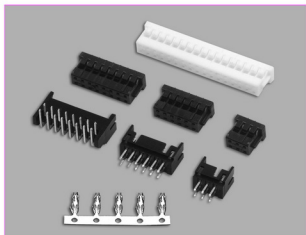


技术参数 SPECIFICATIONS

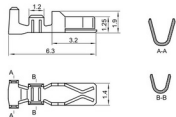
- 线数 (Poles) : 4~34(60)
- 适用线规 (Applicable wires) : AWG28#~22#
- 适应基板厚度 (Applicable PC board thickness) : 1.6mm
- 温度范围 (Temperature range) : -25℃~85℃
- 额定电压 (Voltage rating) : 250V.Ac/Dc
- 额定电流 (Current rating) : 3A
- 接触电阻 (Contact resistance) : $\leq 0.02\Omega$
- 绝缘电阻 (Insulation resistance) : $\geq 1000M\Omega$
- 耐压 (Withstand voltage) : 1000V.Ac/1min
- 材料 (Material) :
 孔座 (Housing) : 尼龙 (PA66) UL94V-2(0)
 针座 (Wafer) : 尼龙 (PA66) UL94V-2(0)
 端子 (Terminal) : 磷青铜 (Phos.bronze Tin/plated)



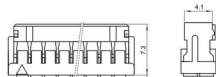
端子 TERMINAL (YST200, DF11)

型号 Type	适用线规 Applicable wires mm ² AWC#	电线外径 O.D of wire ins mm	数量 Quantity
HX20012-PT	0.08~0.33	28~22	12000PCS/盘

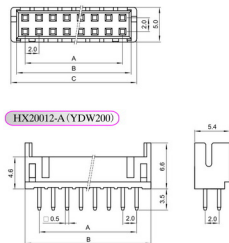
HX20012-PT (YST200, DF11)



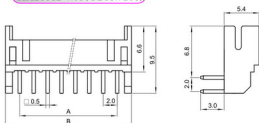
HX20012-Y (YDH200)



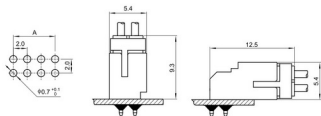
HX20012-A (YDW200)



HX20012-WA (YDAW200)



安装尺寸 MOUNTING MEASUREMENT



孔座 HOUSING (YDH200)

线数 Poles	型号 Type	尺寸 Dimensions (mm)		
		A	B	C
4	HX20012-4Y	2.0	4.4	6.0
6	HX20012-6Y	4.0	6.4	8.0
8	HX20012-8Y	6.0	8.4	10.0
10	HX20012-10Y	8.0	10.4	12.0
12	HX20012-12Y	10.0	12.4	14.0
14	HX20012-14Y	12.0	14.4	16.0
16	HX20012-16Y	14.0	16.4	18.0
18	HX20012-18Y	16.0	18.4	20.0
20	HX20012-20Y	18.0	20.4	22.0
22	HX20012-22Y	20.0	22.4	24.0
24	HX20012-24Y	22.0	24.4	26.0
26	HX20012-26Y	24.0	26.4	28.0
28	HX20012-28Y	26.0	28.4	30.0
30	HX20012-30Y	28.0	30.4	32.0
32	HX20012-32Y	30.0	32.4	34.0
34	HX20012-34Y	32.0	34.4	36.0
...
60	HX20012-60Y	58.0	60.4	62.0

针座 WAFER (YDW200, YDAW200)

线数 Poles	型号 Type	尺寸 Dimensions (mm)	
		直式 (180°)	弯式 (90°)
4	HX20012-4A	HX20012-4WA	2.0 6.0
6	HX20012-6A	HX20012-6WA	4.0 8.0
8	HX20012-8A	HX20012-8WA	6.0 10.0
10	HX20012-10A	HX20012-10WA	8.0 12.0
12	HX20012-12A	HX20012-12WA	10.0 14.0
14	HX20012-14A	HX20012-14WA	12.0 16.0
16	HX20012-16A	HX20012-16WA	14.0 18.0
18	HX20012-18A	HX20012-18WA	16.0 20.0
20	HX20012-20A	HX20012-20WA	18.0 22.0
22	HX20012-22A	HX20012-22WA	20.0 24.0
24	HX20012-24A	HX20012-24WA	22.0 26.0
26	HX20012-26A	HX20012-26WA	24.0 28.0
28	HX20012-28A	HX20012-28WA	26.0 30.0
30	HX20012-30A	HX20012-30WA	28.0 32.0
32	HX20012-32A	HX20012-32WA	30.0 34.0
34	HX20012-34A	HX20012-34WA	32.0 36.0
...
60	HX20012-60A	HX20012-60WA	58.0 62.0

X-ON Electronics

Largest Supplier of Electrical and Electronic Components

Click to view similar products for [Headers & Wire Housings](#) category:

Click to view products by [Hongxing](#) manufacturer:

Other Similar products are found below :

[95000-104TRLF](#) [10135584-644402LF](#) [DF62W-EP2022PCA](#) [95000-106TRLF](#) [DF62W-2022SCA](#) [DF62W-EP2022PC](#) [2203348](#) [DF62W-2022SC](#) [1084018](#) [1029039](#) [1084017](#) [802-10-012-10-002000](#) [1112640](#) [1112639](#) [891-007-9SS-BST1T](#) [000-34000](#) [0008550134](#) [0009482033](#) [0009507031](#) [57102-F02-18ULF](#) [57102-S06-03LF](#) [57202-S52-04LF](#) [PCN6-15S-2.5E](#) [0039019024](#) [58102-G61-06LF](#) [582553-1](#) [0009485154](#) [0009508121](#) [0022285053](#) [0050291907](#) [018731A](#) [LY20-4P-DT1-P1E-BR](#) [02.125.8002.8](#) [60101931](#) [60598-1 \(Cut Strip\)](#) [M1625-3R/100](#) [61062-3](#) [61082-181009](#) [CSU011177004](#) [636-1427](#) [638009-1](#) [641938-9](#) [641991-4](#) [644168-1](#) [644827-2](#) [647662-1](#) [65039-019ELF](#) [65692-001LF](#) [65781-018](#) [65781-047](#)