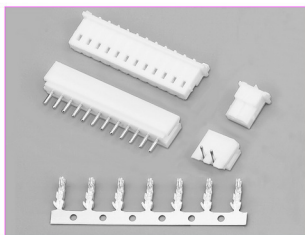


技术参数 SPECIFICATIONS

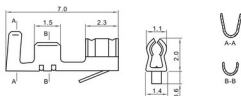
- ❑ 线数 (Poles) : 2~15(20)
- ❑ 适用线规 (Applicable wires) : AWG28#~22#
- ❑ 适应基板厚度 (Applicable PC board thickness) : 1.6mm
- ❑ 温度范围 (Temperature range) : -25°C~85°C
- ❑ 额定电压 (Voltage rating) : 250V.Ac/Dc
- ❑ 额定电流 (Current rating) : 3A
- ❑ 接触电阻 (Contact resistance) : $\leq 0.02\Omega$
- ❑ 绝缘电阻 (Insulation resistance) : $\geq 1000M\Omega$
- ❑ 耐压 (Withstand voltage) : 1000V.Ac/1min
- ❑ 材料 (Material) :
 - 孔座 (Housing) : 尼龙 (PA66) UL94V-2(0)
 - 针座 (Wafer) : 尼龙 (PA66) UL94V-2(0)
 - 端子 (Terminal) : 磷青铜 (Phos.bronze Tin/plated)



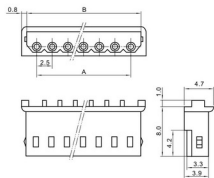
端子 TERMINAL (5263)

| 型号 Type | 适用线规 Applicable wires mm ² AWG# | 电线外径 O.D of wire ins mm | 数量 Quantity |
|------------|--|-------------------------------|----------------|
| HX25014-PT | 0.08~0.3 | 28~22 | 10000PCS/盘 |

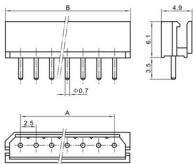
HX25014-PT (5263)



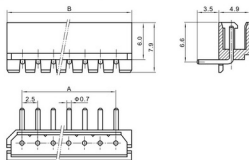
HX25014-Y (5264)



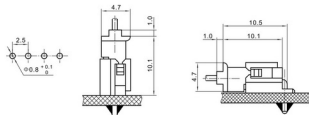
HX25015-A (5267)



HX25015-WA (5268)



安装尺寸 MOUNTING MEASUREMENT



孔座 HOUSING (5264)

| 线数 Poles | 型号 Type | 尺寸 Dimensions (mm) | |
|-------------|-------------|--------------------|------|
| | | A | B |
| 2 | HX25014-2Y | 2.5 | 5.8 |
| 3 | HX25014-3Y | 5.0 | 8.3 |
| 4 | HX25014-4Y | 7.5 | 10.8 |
| 5 | HX25014-5Y | 10.0 | 13.3 |
| 6 | HX25014-6Y | 12.5 | 15.8 |
| 7 | HX25014-7Y | 15.0 | 18.3 |
| 8 | HX25014-8Y | 17.5 | 20.8 |
| 9 | HX25014-9Y | 20.0 | 23.3 |
| 10 | HX25014-10Y | 22.5 | 25.8 |
| 11 | HX25014-11Y | 25.0 | 28.3 |
| 12 | HX25014-12Y | 27.5 | 30.8 |
| 13 | HX25014-13Y | 30.0 | 33.3 |
| 14 | HX25014-14Y | 32.5 | 35.8 |
| 15 | HX25014-15Y | 35.0 | 38.3 |
| ... | ... | ... | ... |
| 20 | HX25014-20Y | 47.5 | 50.8 |

针座 WAFER (5267, 5268)

| 线数 Poles | 型号 Type | | 尺寸 Dimensions (mm) | |
|-------------|-------------|--------------|--------------------|------|
| | 直式 (180°) | 弯式 (90°) | A | B |
| 2 | HX25015-2A | HX25015-2WA | 2.5 | 7.5 |
| 3 | HX25015-3A | HX25015-3WA | 5.0 | 10.0 |
| 4 | HX25015-4A | HX25015-4WA | 7.5 | 12.5 |
| 5 | HX25015-5A | HX25015-5WA | 10.0 | 15.0 |
| 6 | HX25015-6A | HX25015-6WA | 12.5 | 17.5 |
| 7 | HX25015-7A | HX25015-7WA | 15.0 | 20.0 |
| 8 | HX25015-8A | HX25015-8WA | 17.5 | 22.5 |
| 9 | HX25015-9A | HX25015-9WA | 20.0 | 25.0 |
| 10 | HX25015-10A | HX25015-10WA | 22.5 | 27.5 |
| 11 | HX25015-11A | HX25015-11WA | 25.0 | 30.0 |
| 12 | HX25015-12A | HX25015-12WA | 27.5 | 32.5 |
| 13 | HX25015-13A | HX25015-13WA | 30.0 | 35.0 |
| 14 | HX25015-14A | HX25015-14WA | 32.5 | 37.5 |
| 15 | HX25015-15A | HX25015-15WA | 35.0 | 40.0 |
| ... | ... | ... | ... | ... |
| 20 | HX25015-20A | HX25015-20WA | 47.5 | 52.5 |

X-ON Electronics

Largest Supplier of Electrical and Electronic Components

Click to view similar products for [Headers & Wire Housings](#) category:

Click to view products by [Hongxing](#) manufacturer:

Other Similar products are found below :

[0015917161](#) [0022155065](#) [57102-F02-18ULF](#) [58102-G61-06LF](#) [582553-1](#) [01.001.5753.1](#) [0050291907](#) [02.125.8002.8](#) [609-3404](#) [61062-3](#)
[CSU011177004](#) [622-0430](#) [622-3653LF](#) [63453-116](#) [636-1030](#) [636-1427](#) [636-3427](#) [636-4007](#) [641938-9](#) [65495-038](#) [65692-001LF](#) [65781-018](#)
[65781-047](#) [65817-010LF](#) [65817-015LF](#) [67095-007LF](#) [67601157](#) [68631-112](#) [68645-018](#) [699319-000](#) [70.362.1628.0](#) [70-4210](#) [70-4226B](#) [70-](#)
[4853B](#) [71.350.2428.0](#) [733-134](#) [733-162](#) [760-3052](#) [MHR-64-VUAL](#) [80.063.4001.1](#) [800-90-001-10-001000](#) [801-43-002-10-013000](#)
[801-43-006-10-002000](#) [803-43-024-10-001000](#) [803-93-012-10-001000](#) [8-1437020-4](#) [819-22-004-30-001101](#) [820-22-006-30-001101](#)
[820-22-008-30-001101](#) [821-22-002-10-001101](#)