



端子 TERMINAL(SM)

型号 Type	适用线规 Applicable wires mm	AWG#	电线外径 O.D of wire ins mm	数量 Quantity
HX25022-21PT	0.08~0.33	28~22	1.0~1.8	4500PCS/度
HX25023-21RT	0.08~0.33	28~22	1.0~1.8	7000PCS/度
HX25022-21PT	0.3~0.5	22~20	1.5~2.0	4500PCS/度
HX25023-21RT	0.3~0.5	22~20	1.5~2.0	7000PCS/度

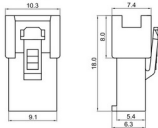
HX25022-PT(SM)



HX25022-PD(SMD)



HX25022-3R2P(SMD)



技术参数 SPECIFICATIONS

- ❑ 线数 (Poles) : 2~12
- ❑ 适用线规 (Applicable wires) , AWG28#~20#
- ❑ 温度范围 (Temperature range) : -25℃~85℃
- ❑ 额定电压 (Voltage rating) : 250V.Ac/Dc
- ❑ 额定电流 (Current rating) : 3A Max
- ❑ 接触电阻 (Contact resistance) : ≤0.02Ω
- ❑ 绝缘电阻 (Insulation resistance) : ≥1000MΩ
- ❑ 耐压 (Withstand voltage) : 1000V.Ac/1min
- ❑ 材料 (Material) :
 - 插头 (Plug housing) : 尼龙 (PA66) UL94V-2(0)
 - 插座 (Receptacle housing) : 尼龙 (PA66) UL94V-2(0)
 - 端子 (Terminal) : 磷青铜 (Phos.bronze Tin/plated)

HX25023-RT(SM)



HX25023-RD(SMD)

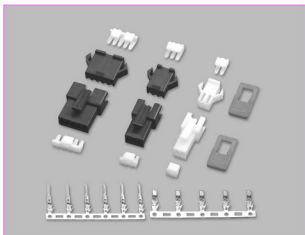


孔座 HOUSING(SMD)

线数 Poles	型号 Type	尺寸Dimensions(mm)		
		插头Housing A	插座Housing B	C
2	HX25022-2PD HX25023-2RD	2.5	5.6	7.8
3	HX25022-3PD HX25023-3RD	5.0	8.1	10.3
4	HX25022-4PD HX25023-4RD	7.5	10.6	12.8
5	HX25022-5PD HX25023-5RD	10.0	13.1	15.3
6	HX25022-6PD HX25023-6RD	12.5	15.6	17.8
7	HX25022-7PD HX25023-7RD	15.0	18.1	20.3
8	HX25022-8PD HX25023-8RD	17.5	20.6	22.8
9	HX25022-9PD HX25023-9RD	20.0	23.1	25.3
10	HX25022-10PD HX25023-10RD	22.5	25.6	27.8
11	HX25022-11PD HX25023-11RD	25.0	28.1	30.3
12	HX25022-12PD HX25023-12RD	27.5	30.6	32.8

技术参数 SPECIFICATIONS

- 线数 (Poles) : 2~12
- 适用线规 (Applicable wires) : AWG28#~20#
- 适用基板厚度 (Applicable PC board thickness) : 0.5~2.0mm
- 温度范围 (Temperature range) : -25°C~85°C
- 额定电压 (Voltage rating) : 250V.Ac/Dc
- 额定电流 (Current rating) : 3A Max
- 接触电阻 (Contact resistance) : $\leq 0.02\Omega$
- 绝缘电阻 (Insulation resistance) : $\geq 1000M\Omega$
- 耐压 (Withstand voltage) : 1000V.Ac/1min
- 材料 (Material) :
 - 插头 (Plug housing) : 尼龙 (PA66) UL94V-2(0)
 - 插座 (Receptacle housing) : 尼龙 (PA66) UL94V-2(0)
 - 插片 (Retainer) : 尼龙 (PA66) UL94V-2(0)
 - 端子 (Terminal) : 磷青铜 (Phos.bronze Tin/plated)

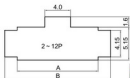


端子 TERMINAL(SM)

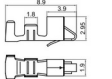
型号 Type	适用线规 Applicable wires		电线外径 O.D of wire ins mm	数量 Quantity
	mm ²	AWG#		
HX25022-21PT	0.08~0.33	28~22	1.0~1.8	4500PCS/盘
HX25023-21RT	0.08~0.33	28~22	1.0~1.8	7000PCS/盘
HX25022-31PT	0.3~0.5	22~20	1.5~2.0	4500PCS/盘
HX25023-31RT	0.3~0.5	22~20	1.5~2.0	7000PCS/盘

线数 Poles	型号 Type	适用基板厚度 Applicable PC board thickness(mm)					
		0.5~0.9		1.0~1.5		1.5~2.0	
		A	B	A	B	A	B
2	HX25022-2P	5.7	9.6	5.7	9.8	5.7	10.0
3	HX25022-3P	8.2	12.1	8.2	12.3	8.2	12.5
4	HX25022-4P	10.7	14.6	10.7	14.8	10.7	15.0
5	HX25022-5P	13.2	17.1	13.2	17.3	13.2	17.5
6	HX25022-6P	15.7	19.6	15.7	19.8	15.7	20.0
7	HX25022-7P	18.2	22.1	18.2	22.3	18.2	22.5
8	HX25022-8P	20.7	24.6	20.7	24.8	20.7	25.0
9	HX25022-9P	23.2	27.1	23.2	27.3	23.2	27.5
10	HX25022-10P	25.7	29.6	25.7	29.8	25.7	30.0
11	HX25022-11P	28.2	32.1	28.2	32.3	28.2	32.5
12	HX25022-12P	30.7	34.6	30.7	34.8	30.7	35.0

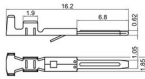
安装尺寸 MOUNTING MEASUREMENT



HX25022-PT (SM)



HX25023-RT (SM)



HX25023-GRS (SM) (钩锁片)



线数 (Poles)	插头插片 (Retainer)	插头 (Plug housing)	插座 (Receptacle housing)	插座插片 (Retainer)
2	HX25022-2PS (SM) 	HX25022-2P (SM) 	HX25023-2R (SM) 	HX25023-2RS (SM)
	HX25022-2PF (SM) 	HX25022-2PF (SM) 	HX25023-2RF (SM) 	HX25023-2RS (SM)
3	HX25022-3PS (SM) 	HX25022-3P (SM) 	HX25022-3R (SM) 	HX25023-3RS (SM)

HXH (SM单排) 型条形连接器 (SM) Pressure Welding Bar Connector

间距 (Pitch) : 2.5mm (.098")

线数 (Poles)	插头插片 (Retainer)	插头 (Plug housing)	插座 (Receptacle housing)	插座插片 (Retainer)
4	HX25022-4PS (SM) 	HX25022-4P (SM) 	HX25023-4R (SM) 	HX25023-4RS (SM)
5	HX25022-5PS (SM) 	HX25022-5P (SM) 	HX25023-5R (SM) 	HX25023-5RS (SM)
6	HX25022-6PS (SM) 	HX25022-6P (SM) 	HX25023-6R (SM) 	HX25023-6RS (SM)
7	HX25022-7PS (SM) 	HX25022-7P (SM) 	HX25023-7R (SM) 	HX25023-7RS (SM)
8	HX25022-8PS (SM) 	HX25022-8P (SM) 	HX25023-8R (SM) 	HX25023-8RS (SM)
9	HX25022-9PS (SM) 	HX25022-9P (SM) 	HX25023-9R (SM) 	HX25023-9RS (SM)

线数 (Poles)	插头插片 (Retainer)	插头 (Plug housing)	插座 (Receptacle housing)	插座插片 (Retainer)
10	<p>HX25022-10PS (SM)</p>	<p>HX25022-10P (SM)</p>	<p>HX25023-10R (SM)</p>	<p>HX25023-10RS (SM)</p>
11	<p>HX25022-11PS (SM)</p>	<p>HX25022-11P (SM)</p>	<p>HX25023-11R (SM)</p>	<p>HX25023-11RS (SM)</p>
12	<p>HX25022-12PS (SM)</p>	<p>HX25022-12P (SM)</p>	<p>HX25023-12R (SM)</p>	<p>HX25023-12RS (SM)</p>
10		<p>HX25022-10PB (SMB)</p>	<p>HX25023-10RB (SMB)</p>	



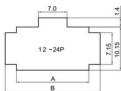
端子 (Terminal) (SM)

型号 Type	适用线规 Applicable wires		电线外径 O.D of wire ins		数量 Quantity
	mm ²	AWG#	mm	mm	
HX25022-21PT	0.08~0.33	28~22	1.0~1.8	1.0~1.8	4500PCS/盒
HX25023-21RT	0.08~0.33	28~22	1.0~1.8	1.0~1.8	7000PCS/盒
HX25022-31PT	0.3~0.5	22~20	1.5~2.0	1.5~2.0	4500PCS/盒
HX25023-31RT	0.3~0.5	22~20	1.5~2.0	1.5~2.0	7000PCS/盒

技术参数 SPECIFICATIONS

- 线数 (Poles) : 12、14、16、18、20、22、24
- 适用线规 (Applicable wires) : AWG28#~20#
- 适应基板厚度 (Applicable PC board thickness) : 0.5~2.0mm
- 温度范围 (Temperature range) : -25℃~85℃
- 额定电压 (Voltage rating) : 250V.Ac/Dc
- 额定电流 (Current rating) : 2A
- 接触电阻 (Contact resistance) : $\leq 0.02\Omega$
- 绝缘电阻 (Insulation resistance) : $\geq 800M\Omega$
- 耐压 (Withstand voltage) : 1000V.Ac/1min
- 材料 (Material) :
 - 插头 (Plug housing) : 尼龙 (PA66) UL94V-2(0)
 - 插座 (Receptacle housing) : 尼龙 (PA66) UL94V-2(0)
 - 端子 (Terminal) : 磷青铜 (Phos.bronze Tin/plated)

安装尺寸 MOUNTING DIMENSION



线数 Poles	型号 Type	近向基板厚度 Applicable PC board thickness(mm)					
		0.5~0.9		1.0~1.5		1.5~2.0	
		A	B	A	B	A	B
12	HX25022-2x 6PN	15.7	19.7	15.7	19.9	15.7	20.1
14	HX25022-2x 7P	18.2	22.2	18.2	22.4	18.2	22.6
16	HX25022-2x 8P	20.7	24.7	20.7	24.9	20.7	25.1
18	HX25022-2x 9P	23.2	27.2	23.2	27.4	23.2	27.6
20	HX25022-2x 10P	25.7	29.7	25.7	29.9	25.7	30.1
22	HX25022-2x 11P	28.2	32.2	28.2	32.4	28.2	32.6
24	HX25022-2x 12P	30.7	34.7	30.7	34.9	30.7	35.1

HX25023-GRS(SM) (钩锁片)		HX25022-PT(SM)		HX25023-RT(SM)		
线数 (Poles)	额定电压 (Voltage rating)	额定电流 (Current rating)	插头 (Plug Housing)		插座 (Receptacle Housing)	
12	250V	2A	HX25022-2x6PN(SM)		HX25023-2x6RN(SM)	
14	250V	2A	HX25022-2x7P(SM)		HX25023-2x7R(SM)	

线数 (Poles)	额定电压 (Voltage rating)	额定电流 (Current rating)	插头 (Plug Housing)	插座 (Receptacle Housing)
16	250V	2A	<p>HX25022-2x8P (SM)</p>	<p>HX25023-2x8R (SM)</p>
18	250V	2A	<p>HX25022-2x9P (SM)</p>	<p>HX25023-2x9R (SM)</p>
20	250V	2A	<p>HX25022-2x10P (SM)</p>	<p>HX25023-2x10R (SM)</p>
22	250V	2A	<p>HX25022-2x11P (SM)</p>	<p>HX25023-2x11R (SM)</p>
24	250V	2A	<p>HX25022-2x12P (SM)</p>	<p>HX25023-2x12R (SM)</p>

X-ON Electronics

Largest Supplier of Electrical and Electronic Components

Click to view similar products for [Headers & Wire Housings](#) category:

Click to view products by [Hongxing](#) manufacturer:

Other Similar products are found below :

[57102-F02-18ULF](#) [58102-G61-06LF](#) [582553-1](#) [009176003701906](#) [01.001.5753.1](#) [0050291907](#) [02.125.8002.8](#) [609-3404](#) [61062-3](#)
[CSU011177004](#) [622-0430](#) [622-3653LF](#) [63453-116](#) [636-1030](#) [636-1427](#) [636-3427](#) [636-4007](#) [641938-9](#) [644827-2](#) [65495-038](#) [65692-001LF](#)
[65781-018](#) [65781-047](#) [65817-010LF](#) [65817-015LF](#) [66207-023LF](#) [67095-007LF](#) [67601157](#) [68631-112](#) [68645-018](#) [699319-000](#)
[M90C108951C](#) [70.362.1628.0](#) [70-4210](#) [70-4226B](#) [70-4853B](#) [707-5028](#) [71.350.2428.0](#) [71961-016LF](#) [733-134](#) [733-162](#) [754199-000](#) [760-](#)
[3052](#) [80.063.4001.1](#) [800-90-001-10-001000](#) [800-90-010-10-002000](#) [801-43-002-10-013000](#) [801-43-006-10-002000](#) [803-41-018-10-001000](#)
[803-43-024-10-001000](#)