



端子 TERMINAL(SM)

| 型号 Type | 适用线规 Applicable wires mm | AWG# | 电线外径 O.D of wire ins mm | 数量 Quantity |
|--------------|--------------------------------|-------|-------------------------------|----------------|
| HX25022-21PT | 0.08~0.33 | 28~22 | 1.0~1.8 | 4500PCS/度 |
| HX25023-21RT | 0.08~0.33 | 28~22 | 1.0~1.8 | 7000PCS/度 |
| HX25022-21PT | 0.3~0.5 | 22~20 | 1.5~2.0 | 4500PCS/度 |
| HX25023-21RT | 0.3~0.5 | 22~20 | 1.5~2.0 | 7000PCS/度 |

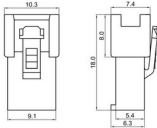
HX25022-PT(SM)



HX25022-PD(SMD)



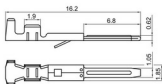
HX25022-3R2P(SMD)



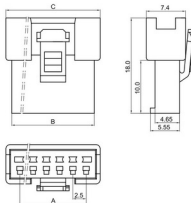
技术参数 SPECIFICATIONS

- ❑ 线数 (Poles) : 2~12
- ❑ 适用线规 (Applicable wires) , AWG28#~20#
- ❑ 温度范围 (Temperature range) : -25℃~85℃
- ❑ 额定电压 (Voltage rating) : 250V.Ac/Dc
- ❑ 额定电流 (Current rating) : 3A Max
- ❑ 接触电阻 (Contact resistance) : ≤0.02Ω
- ❑ 绝缘电阻 (Insulation resistance) : ≥1000MΩ
- ❑ 耐压 (Withstand voltage) : 1000V.Ac/1min
- ❑ 材料 (Material) :
 插头 (Plug housing) : 尼龙 (PA66) UL94V-2(0)
 插座 (Receptacle housing) : 尼龙 (PA66) UL94V-2(0)
 端子 (Terminal) : 磷青铜 (Phos.bronze Tin/plated)

HX25023-RT(SM)



HX25023-RD(SMD)

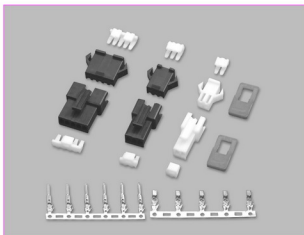


孔座 HOUSING(SMD)

| 线数 Poles | 型号 Type | 尺寸Dimensions(mm) | | |
|-------------|------------------------------|------------------|----------------|------|
| | | 插头Housing A | 插座Housing B | C |
| 2 | HX25022-2PD HX25023-2RD | 2.5 | 5.6 | 7.8 |
| 3 | HX25022-3PD HX25023-3RD | 5.0 | 8.1 | 10.3 |
| 4 | HX25022-4PD HX25023-4RD | 7.5 | 10.6 | 12.8 |
| 5 | HX25022-5PD HX25023-5RD | 10.0 | 13.1 | 15.3 |
| 6 | HX25022-6PD HX25023-6RD | 12.5 | 15.6 | 17.8 |
| 7 | HX25022-7PD HX25023-7RD | 15.0 | 18.1 | 20.3 |
| 8 | HX25022-8PD HX25023-8RD | 17.5 | 20.6 | 22.8 |
| 9 | HX25022-9PD HX25023-9RD | 20.0 | 23.1 | 25.3 |
| 10 | HX25022-10PD HX25023-10RD | 22.5 | 25.6 | 27.8 |
| 11 | HX25022-11PD HX25023-11RD | 25.0 | 28.1 | 30.3 |
| 12 | HX25022-12PD HX25023-12RD | 27.5 | 30.6 | 32.8 |

技术参数 SPECIFICATIONS

- 线数 (Poles) : 2~12
- 适用线规 (Applicable wires) : AWG28#~20#
- 适用基板厚度 (Applicable PC board thickness) : 0.5~2.0mm
- 温度范围 (Temperature range) : -25°C~85°C
- 额定电压 (Voltage rating) : 250V.Ac/Dc
- 额定电流 (Current rating) : 3A Max
- 接触电阻 (Contact resistance) : $\leq 0.02\Omega$
- 绝缘电阻 (Insulation resistance) : $\geq 1000M\Omega$
- 耐压 (Withstand voltage) : 1000V.Ac/1min
- 材料 (Material) :
 - 插头 (Plug housing) : 尼龙 (PA66) UL94V-2(0)
 - 插座 (Receptacle housing) : 尼龙 (PA66) UL94V-2(0)
 - 插片 (Retainer) : 尼龙 (PA66) UL94V-2(0)
 - 端子 (Terminal) : 磷青铜 (Phos.bronze Tin/plated)



端子 TERMINAL(SM)

| 型号 Type | 适用线规 Applicable wires | | 电线外径 O.D of wire ins mm | 数量 Quantity |
|--------------|--------------------------|-------|-------------------------------|----------------|
| | mm ² | AWG# | | |
| HX25022-21PT | 0.08~0.33 | 28~22 | 1.0~1.8 | 4500PCS/盘 |
| HX25023-21RT | 0.08~0.33 | 28~22 | 1.0~1.8 | 7000PCS/盘 |
| HX25022-31PT | 0.3~0.5 | 22~20 | 1.5~2.0 | 4500PCS/盘 |
| HX25023-31RT | 0.3~0.5 | 22~20 | 1.5~2.0 | 7000PCS/盘 |

| 线数 Poles | 型号 Type | 适用基板厚度 Applicable PC board thickness(mm) | | | | | |
|-------------|-------------|--|------|---------|------|---------|------|
| | | 0.5~0.9 | | 1.0~1.5 | | 1.5~2.0 | |
| | | A | B | A | B | A | B |
| 2 | HX25022-2P | 5.7 | 9.6 | 5.7 | 9.8 | 5.7 | 10.0 |
| 3 | HX25022-3P | 8.2 | 12.1 | 8.2 | 12.3 | 8.2 | 12.5 |
| 4 | HX25022-4P | 10.7 | 14.6 | 10.7 | 14.8 | 10.7 | 15.0 |
| 5 | HX25022-5P | 13.2 | 17.1 | 13.2 | 17.3 | 13.2 | 17.5 |
| 6 | HX25022-6P | 15.7 | 19.6 | 15.7 | 19.8 | 15.7 | 20.0 |
| 7 | HX25022-7P | 18.2 | 22.1 | 18.2 | 22.3 | 18.2 | 22.5 |
| 8 | HX25022-8P | 20.7 | 24.6 | 20.7 | 24.8 | 20.7 | 25.0 |
| 9 | HX25022-9P | 23.2 | 27.1 | 23.2 | 27.3 | 23.2 | 27.5 |
| 10 | HX25022-10P | 25.7 | 29.6 | 25.7 | 29.8 | 25.7 | 30.0 |
| 11 | HX25022-11P | 28.2 | 32.1 | 28.2 | 32.3 | 28.2 | 32.5 |
| 12 | HX25022-12P | 30.7 | 34.6 | 30.7 | 34.8 | 30.7 | 35.0 |

安装尺寸 MOUNTING MEASUREMENT



| 线数 (Poles) | 插头插片 (Retainer) | 插头 (Plug housing) | 插座 (Receptacle housing) | 插座插片 (Retainer) |
|---------------|----------------------|----------------------|-------------------------|----------------------------|
| 2 | HX25022-2PS (SM) | HX25022-2P (SM) | HX25023-2R (SM) | HX25023-2RS (SM) (钩锁片) |
| | HX25022-2PF (SM) | HX25022-2PF (SM) | HX25023-2RF (SM) | HX25023-2RF (SM) |
| 3 | HX25022-3PS (SM) | HX25022-3P (SM) | HX25023-3R (SM) | HX25023-3RS (SM) |
| | HX25022-3PF (SM) | HX25022-3PF (SM) | HX25023-3RF (SM) | HX25023-3RF (SM) |

HXH (SM单排) 型条形连接器 (SM) Pressure Welding Bar Connector

间距 (Pitch) : 2.5mm (.098")

| 线数 (Poles) | 插头插片 (Retainer) | 插头 (Plug housing) | 插座 (Receptacle housing) | 插座插片 (Retainer) |
|------------|---|--|--|---|
| 4 | HX25022-4PS (SM)  | HX25022-4P (SM)  | HX25023-4R (SM)  | HX25023-4RS (SM)  |
| 5 | HX25022-5PS (SM)  | HX25022-5P (SM)  | HX25023-5R (SM)  | HX25023-5RS (SM)  |
| 6 | HX25022-6PS (SM)  | HX25022-6P (SM)  | HX25023-6R (SM)  | HX25023-6RS (SM)  |
| 7 | HX25022-7PS (SM)  | HX25022-7P (SM)  | HX25023-7R (SM)  | HX25023-7RS (SM)  |
| 8 | HX25022-8PS (SM)  | HX25022-8P (SM)  | HX25023-8R (SM)  | HX25023-8RS (SM)  |
| 9 | HX25022-9PS (SM)  | HX25022-9P (SM)  | HX25023-9R (SM)  | HX25023-9RS (SM)  |

| 线数 (Poles) | 插头插片 (Retainer) | 插头 (Plug housing) | 插座 (Receptacle housing) | 插座插片 (Retainer) |
|------------|---------------------------------|----------------------------------|----------------------------------|---------------------------------|
| 10 | <p>HX25022-10PS (SM)</p> | <p>HX25022-10P (SM)</p> | <p>HX25023-10R (SM)</p> | <p>HX25023-10RS (SM)</p> |
| 11 | <p>HX25022-11PS (SM)</p> | <p>HX25022-11P (SM)</p> | <p>HX25023-11R (SM)</p> | <p>HX25023-11RS (SM)</p> |
| 12 | <p>HX25022-12PS (SM)</p> | <p>HX25022-12P (SM)</p> | <p>HX25023-12R (SM)</p> | <p>HX25023-12RS (SM)</p> |
| 10 | <p>—</p> | <p>HX25022-10PB (SMB)</p> | <p>HX25023-10RB (SMB)</p> | <p>—</p> |



端子 (TERMINAL) (SM)

| 型号 Type | 适用线规 Applicable wires | | 电线外径 O.D of wire ins | | 数量 Quantity |
|--------------|--------------------------|-------|-------------------------|---------|----------------|
| | mm ² | AWG# | mm | mm | |
| HX25022-21PT | 0.08~0.33 | 28~22 | 1.0~1.8 | 1.0~1.8 | 4500PCS/盒 |
| HX25023-21RT | 0.08~0.33 | 28~22 | 1.0~1.8 | 1.5~2.0 | 7000PCS/盒 |
| HX25022-31PT | 0.3~0.5 | 22~20 | 1.5~2.0 | 1.5~2.0 | 4500PCS/盒 |
| HX25023-31RT | 0.3~0.5 | 22~20 | 1.5~2.0 | 1.5~2.0 | 7000PCS/盒 |

技术参数 SPECIFICATIONS

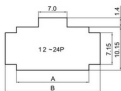
- 线数 (Poles) : 12、14、16、18、20、22、24
- 适用线规 (Applicable wires) : AWG28#~20#
- 适应基板厚度 (Applicable PC board thickness) : 0.5~2.0mm
- 温度范围 (Temperature range) : -25℃~85℃
- 额定电压 (Voltage rating) : 250V.Ac/Dc
- 额定电流 (Current rating) : 2A
- 接触电阻 (Contact resistance) : $\leq 0.02\Omega$
- 绝缘电阻 (Insulation resistance) : $\geq 800M\Omega$
- 耐压 (Withstand voltage) : 1000V.Ac/1min
- 材料 (Material) :

插头 (Plug housing) : 尼龙 (PA66) UL94V-2(0)

插座 (Receptacle housing) : 尼龙 (PA66) UL94V-2(0)

端子 (Terminal) : 磷青铜 (Phos.bronze Tin/plated)

安装尺寸 MOUNTING MEASUREMENT



| 线数 Poles | 型号 Type | 近向基板厚度 Applicable PC board thickness(mm) | | | | | |
|-------------|----------------|--|------|---------|------|---------|------|
| | | 0.5~0.9 | | 1.0~1.5 | | 1.5~2.0 | |
| | | A | B | A | B | A | B |
| 12 | HX25022-2x 6PN | 15.7 | 19.7 | 15.7 | 19.9 | 15.7 | 20.1 |
| 14 | HX25022-2x 7P | 18.2 | 22.2 | 18.2 | 22.4 | 18.2 | 22.6 |
| 16 | HX25022-2x 8P | 20.7 | 24.7 | 20.7 | 24.9 | 20.7 | 25.1 |
| 18 | HX25022-2x 9P | 23.2 | 27.2 | 23.2 | 27.4 | 23.2 | 27.6 |
| 20 | HX25022-2x 10P | 25.7 | 29.7 | 25.7 | 29.9 | 25.7 | 30.1 |
| 22 | HX25022-2x 11P | 28.2 | 32.2 | 28.2 | 32.4 | 28.2 | 32.6 |
| 24 | HX25022-2x 12P | 30.7 | 34.7 | 30.7 | 34.9 | 30.7 | 35.1 |

| HX25023-GRS(SM) (钩锁片) | | | HX25022-PT(SM) | | | HX25023-RT(SM) | | |
|-----------------------|--------------------------|--------------------------|-------------------|--|--|-------------------------|--|--|
| | | | | | | | | |
| 线数 (Poles) | 额定电压 (Voltage rating) | 额定电流 (Current rating) | 插头 (Plug Housing) | | | 插座 (Receptacle Housing) | | |
| 12 | 250V | 2A | HX25022-2x6PN(SM) | | | HX25023-2x6RN(SM) | | |
| | | | | | | | | |
| 14 | 250V | 2A | HX25022-2x7P(SM) | | | HX25023-2x7R(SM) | | |
| | | | | | | | | |

| 线数 (Poles) | 额定电压 (Voltage rating) | 额定电流 (Current rating) | 插头 (Plug Housing) | 插座 (Receptacle Housing) |
|---------------|-----------------------------|-----------------------------|----------------------------------|----------------------------------|
| 16 | 250V | 2A | <p>HX25022-2x8P (SM)</p> | <p>HX25023-2x8R (SM)</p> |
| 18 | 250V | 2A | <p>HX25022-2x9P (SM)</p> | <p>HX25023-2x9R (SM)</p> |
| 20 | 250V | 2A | <p>HX25022-2x10P (SM)</p> | <p>HX25023-2x10R (SM)</p> |
| 22 | 250V | 2A | <p>HX25022-2x11P (SM)</p> | <p>HX25023-2x11R (SM)</p> |
| 24 | 250V | 2A | <p>HX25022-2x12P (SM)</p> | <p>HX25023-2x12R (SM)</p> |

X-ON Electronics

Largest Supplier of Electrical and Electronic Components

Click to view similar products for [RF Connector Accessories](#) category:

Click to view products by [Hongxing](#) manufacturer:

Other Similar products are found below :

[89674-0712](#) [FERRULE-174](#) [R125802000](#) [R141862000W](#) [R280752000](#) [R280907000](#) [RFI75-3](#) [RFI77-14](#) [AX102907](#) [HP-500](#) [2098-3251-94](#)
[KA-81-05](#) [89674-0805](#) [FERRULE-223](#) [202102-11](#) [213337-1](#) [R280468000](#) [R280510000](#) [RFI155-1](#) [RFI25-12-D3](#) [RFI25-5](#) [RFI75-12-D2](#)
[RFI75-2-D2](#) [RFI75-4-D3](#) [RFI77-6](#) [RFI97-14](#) [3550 04 K00](#) [360HS001M2508M6](#) [4-1532137-4](#) [HRM-514S\(40\)](#) [5-21085-0](#) [111062-0490](#)
[112122-SOD-LUG](#) [IPP-2014](#) [RFI95-14-D2](#) [LPTW2TP-124](#) [MX-913/U\(45\)](#) [1736-1511-075](#) [32Z112-000F](#) [000-78400](#) [78_Z-7-3-4](#) [56Z112-](#)
[000N](#) [RFI75-2-D3](#) [47140003A](#) [RFI75-2-D4](#) [RFI25-3-D3](#) [53919000B](#) [R280469010](#) [RFI85-4](#) [896110450](#)