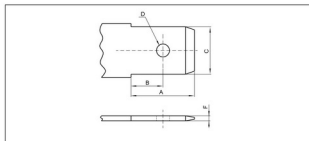


### 技术参数 SPECIFICATIONS

- 适用线规 (Applicable wires) : AWG24#~16#
- 温度范围 (Temperature range) : -25℃~85℃
- 额定电压 (Voltage rating) : 300V.Ac/Dc
- 额定电流 (Current rating) : 12A max
- 接触电阻 (Contact resistance) :  $\leq 0.01\Omega$
- 绝缘电阻 (Insulation resistance) :  $\geq 1000M\Omega$
- 耐压 (Withstand voltage) : 2000V.Ac/1min
- 材料 (Material) :
  - 壳体 (Housing) : 尼龙 (PA66) UL94V-2(0)
  - 端子 (Terminal) : 磷青铜 (Phos.bronze Tin/plated)  
黄铜 (B rass Tin/plated)

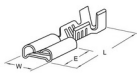
### .110/.187\* 端子 TERMINAL

型号 Type		适用线规 Applicable wires		材料 Material	尺寸Dimensions (mm)				示图 Sample	数量 Quantity
		mm'	AWG#		W	L	E	材料厚度 Thickness		
HX480N-01T	ST0-01T-187N	0.2~0.5	24~20	黄铜 Brass	5.7	15.0	6.5	0.35	A	10000PCS/卷
HX480N-41T	ST0-41T-187N	0.5~1.25	20~16		5.7	15.0	6.5	0.35		10000PCS/卷
HX480N-61T	ST0-61T-187N	(UL1015) 20+18			5.7	15.0	6.5	0.35		10000PCS/卷
HX28010-PT	730629-3	0.5~1.42	20~16	磷青铜 Phos.bronze	3.8	15.6	7.6	0.25	B	15000PCS/卷



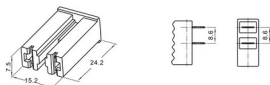
型号 Type	尺寸Dimensions (mm)				
	A	B	C	D	F
.187*	7.0	3.6	4.8	$\phi 1.5$	0.5

### HX480N-T

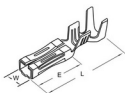


(A)

### HX480-187ZH

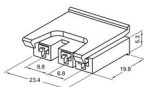


### HX28010-PT

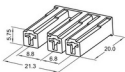


(B)

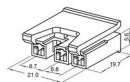
### HX28010-3P (610539)



### HX28015-3P



### HX28020-3P (610815)



## X-ON Electronics

Largest Supplier of Electrical and Electronic Components

*Click to view similar products for [Headers & Wire Housings](#) category:*

*Click to view products by [Hongxing](#) manufacturer:*

Other Similar products are found below :

[95000-104TRLF](#) [10135584-644402LF](#) [DF62W-EP2022PCA](#) [95000-106TRLF](#) [DF62W-2022SCA](#) [DF62W-EP2022PC](#) [2203348](#) [DF62W-2022SC](#) [1084018](#) [1029039](#) [1084017](#) [802-10-012-10-002000](#) [1112640](#) [1112639](#) [891-007-9SS-BST1T](#) [000-34000](#) [0008550134](#) [0009482033](#) [0009507031](#) [57102-F02-18ULF](#) [57102-S06-03LF](#) [57202-S52-04LF](#) [PCN6-15S-2.5E](#) [0039019024](#) [58102-G61-06LF](#) [582553-1](#) [0009485154](#) [0009508121](#) [0022285053](#) [0050291907](#) [018731A](#) [LY20-4P-DT1-P1E-BR](#) [02.125.8002.8](#) [60101931](#) [60598-1 \(Cut Strip\)](#) [M1625-3R/100](#) [61062-3](#) [61082-181009](#) [CSU011177004](#) [636-1427](#) [638009-1](#) [641938-9](#) [641991-4](#) [644168-1](#) [644827-2](#) [647662-1](#) [65039-019ELF](#) [65692-001LF](#) [65781-018](#) [65781-047](#)