



技术参数 SPECIFICATIONS

- 线数 (Poles) : 2~13, 15
- 适用线规 (Applicable wires) : AWG26#~18#
- 适应基板厚度 (Applicable PC board thickness) : 1.6mm
- 温度范围 (Temperature range) : -25°C~85°C
- 额定电压 (Voltage rating) : 250V.Ac/Dc
- 额定电流 (Current rating) : 7.5A
- 接触电阻 (Contact resistance) : $\leq 0.015\Omega$
- 绝缘电阻 (Insulation resistance) : $\geq 1000M\Omega$
- 耐压 (Withstand voltage) : 1500V.Ac/min
- 材料 (Material) :
 - 孔座 (Housing) : 尼龙 (PA66) UL94V-2 (0)
 - 针座 (Wafer) : 尼龙 (PA66) UL94V-2 (0)
 - 端子 (Terminal) : 磷青铜 (Phos.bronze Tin/plated)

端子 (TERMINAL)(VH) 端子与 HX3960-PT (VH) 型端子通用 (P93)

型号 Type	适用线规 Applicable wires	电线外径 O.D of wire ins	数量 Quantity
HX3960-01PT	0.12~0.35 AWG# 26~22	1.2~1.8 mm	3000PCS/包
HX3960-PT	0.33~0.83 22~18	1.7~3.0	3000PCS/包

HX39600-Y (VH)



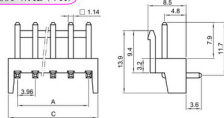
HX39601-BH (VH)



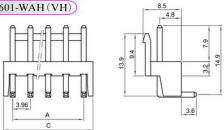
HX39601-WBH (VH)



HX39601-WAD (VH)



HX39601-WAH (VH)



安装尺寸 MOUNTING MEASUREMENT



孔座 HOUSING(VH)

线数 Poles	型号 Type	尺寸Dimensions(mm)	
		A	B
2	HX39600-2Y	3.96	8.06
3	HX39600-3Y	7.92	11.92
4	HX39600-4Y	11.88	15.88
5	HX39600-5Y	15.84	19.84
6	HX39600-6Y	19.80	23.80
7	HX39600-7Y	23.76	27.76
8	HX39600-8Y	27.72	31.72
9	HX39600-9Y	31.68	35.68
10	HX39600-10Y	35.64	39.64
11	HX39600-11Y	39.60	43.60
12	HX39600-12Y	43.56	47.56
13	HX39600-13Y	47.52	51.52
15	HX39600-15Y	55.44	59.44

针座 WAFER(VH)

线数 Poles	型号 Type	尺寸Dimension(mm)			
		定位弯针	加高型针	A B C	
2	HX39601-2WA	HX39601-2BH/WBH	3.96	9.80	7.96
3	HX39601-3WA	HX39601-3BH/WBH	7.92	13.76	11.92
4	HX39601-4WA	HX39601-4BH/WBH	11.88	17.72	15.88
5	HX39601-5WA	HX39601-5BH/WBH	15.84	21.68	19.84
6	HX39601-6WA	HX39601-6BH/WBH	19.80	25.64	23.80
7	HX39601-7WA	HX39601-7BH/WBH	23.76	29.60	27.76
8	HX39601-8WA	HX39601-8BH/WBH	27.72	33.56	31.72
9	HX39601-9WA	HX39601-9BH/WBH	31.68	37.52	35.68
10	HX39601-10WA	HX39601-10BH/WBH	35.64	41.48	39.64
11	HX39601-11WA	HX39601-11BH/WBH	39.60	45.44	43.60
12	HX39601-12WA	HX39601-12BH/WBH	43.56	49.40	47.56
13	HX39601-13WA	HX39601-13BH/WBH	47.52	53.36	51.48
15	HX39601-15WA	HX39601-15BH/WBH	55.44	61.28	59.40

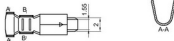
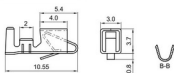
技术参数 SPECIFICATIONS

- 线数 (Poles) : 2~13, 15
- 适用线规 (Applicable wires) : AWG26#~18#
- 适应基板厚度 (Applicable PC board thickness) : 1.6mm
- 温度范围 (Temperature range) : -25°C~85°C
- 额定电压 (Voltage rating) : 250V.Ac/Dc
- 额定电流 (Current rating) : 7.5A
- 接触电阻 (Contact resistance) : $\leq 0.015\Omega$
- 绝缘电阻 (Insulation resistance) : $\geq 1000M\Omega$
- 耐压 (Withstand voltage) : 1500V.Ac/min
- 材料 (Material) :
 - 孔座 (Housing) : 尼龙 (PA66) UL94V-2 (0)
 - 针座 (Wafer) : 尼龙 (PA66) UL94V-2 (0)
 - 锁片 (Retainer) : 尼龙 (PA66) UL94V-2 (0)
 - 端子 (Terminal) : 磷青铜 (PHos. bronze Tin/plated)

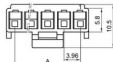
端子 TERMINAL(VH)

型号 Type	适用线规 Applicable wires	电线外径 O.D of wire ins	数量 Quantity
HX39600-01PT	0.12~0.35	26~22	3000PCS/盘
HX39600-PT	0.33~0.83	22~18	3000PCS/盘

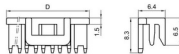
HX39600-PT (VH)



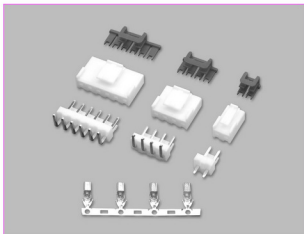
HX39600-Y (VH)



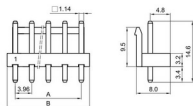
HX39600-HS (VH)



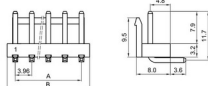
安装尺寸 MOUNTING MEASUREMENT



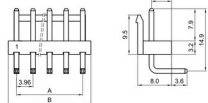
HX39601-A (VH)



HX39601-WAP (VH)



HX39601-WAG (VH)



孔座 HOUSIN (VH)

线数 Poles	型号 Type	尺寸 Dimensions(mm)			
		A	B	C	D
2	HX39600-2Y	3.96	8.06	6.85	7.95
3	HX39600-3Y	7.92	11.92	10.7	11.80
4	HX39600-4Y	11.88	15.88	10.7	15.76
5	HX39600-5Y	15.84	19.84	10.7	19.72
6	HX39600-6Y	19.80	23.80	10.7	23.68
7	HX39600-7Y	23.76	27.76	10.7	27.64
8	HX39600-8Y	27.72	31.72	10.7	31.60
9	HX39600-9Y	31.68	35.68	10.7	35.56
10	HX39600-10Y	35.64	39.64	10.7	39.52
11	HX39600-11Y	39.60	43.60	10.7	43.48
12	HX39600-12Y	43.56	47.56	10.7	47.44
13	HX39600-13Y	47.52	51.52	—	—
15	HX39600-15Y	55.44	59.44	—	—

针座 WAFER (VH)

线数 Poles	形式 (80°)	型号 Type	尺寸 Dimensions(mm)	
			A	B
2	HX39601-2A	HX39601-2WA	3.96	7.92
3	HX39601-3A	HX39601-3WA	7.92	11.88
4	HX39601-4A	HX39601-4WA	11.88	15.84
5	HX39601-5A	HX39601-5WA	15.84	19.80
6	HX39601-6A	HX39601-6WA	19.80	23.76
7	HX39601-7A	HX39601-7WA	23.76	27.72
8	HX39601-8A	HX39601-8WA	27.72	31.68
9	HX39601-9A	HX39601-9WA	31.68	35.64
10	HX39601-10A	HX39601-10WA	35.64	39.60
11	HX39601-11A	HX39601-11WA	39.60	43.56
12	HX39601-12A	HX39601-12WA	43.56	47.52
13	HX39601-13A	HX39601-13WA	47.52	51.48
15	HX39601-15A	HX39601-15WA	55.44	59.40

X-ON Electronics

Largest Supplier of Electrical and Electronic Components

Click to view similar products for [RF Connector Accessories](#) category:

Click to view products by [Hongxing](#) manufacturer:

Other Similar products are found below :

[89674-0712](#) [FERRULE-174](#) [R125802000](#) [R141862000W](#) [R280752000](#) [R280907000](#) [RFI75-3](#) [RFI77-14](#) [AX102907](#) [HP-500](#) [2098-3251-94](#)
[KA-81-05](#) [89674-0805](#) [FERRULE-223](#) [202102-11](#) [213337-1](#) [R280468000](#) [R280510000](#) [RFI155-1](#) [RFI25-12-D3](#) [RFI25-5](#) [RFI75-12-D2](#)
[RFI75-2-D2](#) [RFI75-4-D3](#) [RFI77-6](#) [RFI97-14](#) [3550 04 K00](#) [360HS001M2508M6](#) [4-1532137-4](#) [HRM-514S\(40\)](#) [5-21085-0](#) [111062-0490](#)
[112122-SOD-LUG](#) [IPP-2014](#) [RFI95-14-D2](#) [LPTW2TP-124](#) [MX-913/U\(45\)](#) [1736-1511-075](#) [32Z112-000F](#) [000-78400](#) [78_Z-7-3-4](#) [56Z112-](#)
[000N](#) [RFI75-2-D3](#) [47140003A](#) [RFI75-2-D4](#) [RFI25-3-D3](#) [53919000B](#) [R280469010](#) [RFI85-4](#) [896110450](#)