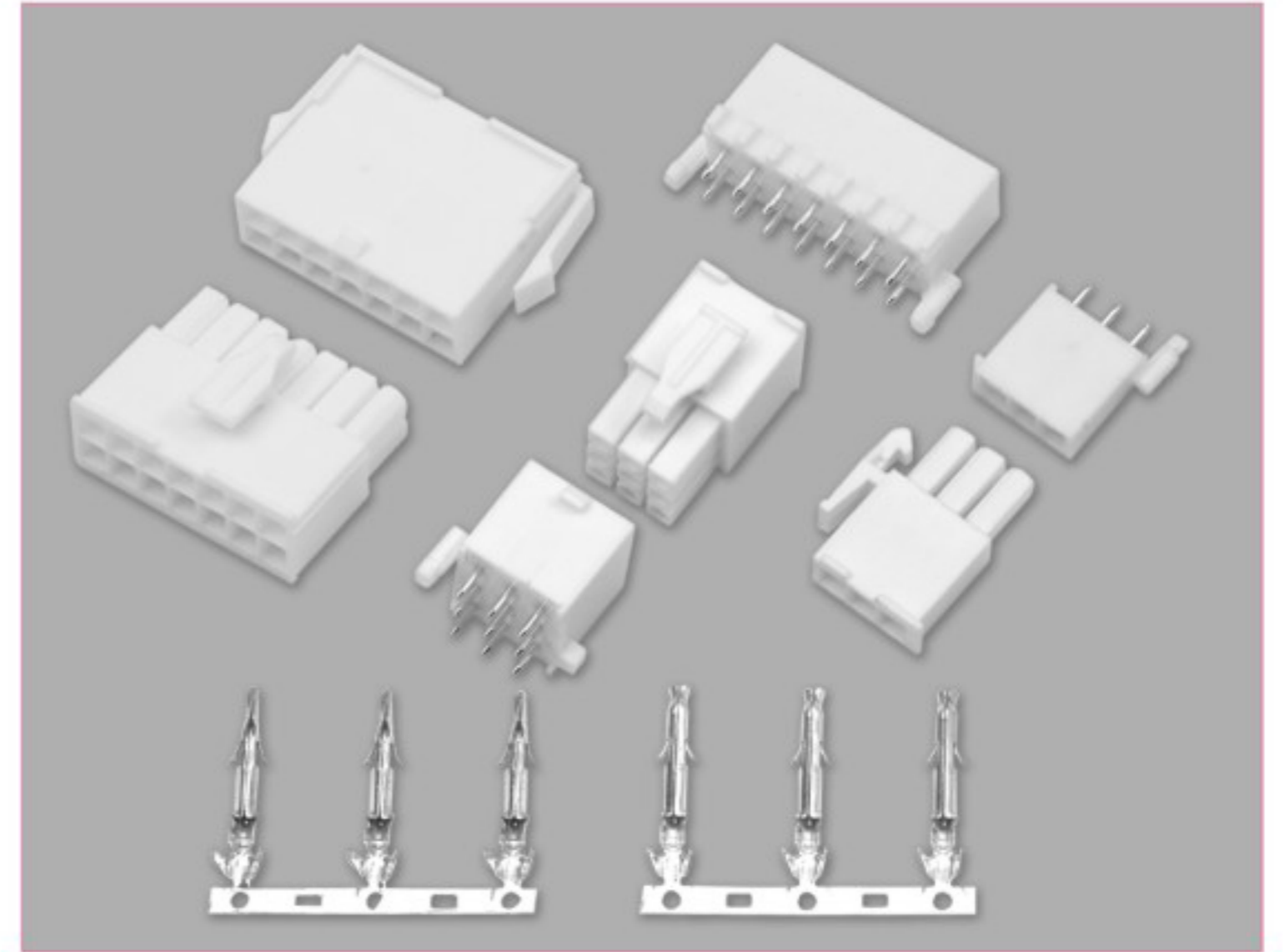


■ 技术参数 SPECIFICATIONS

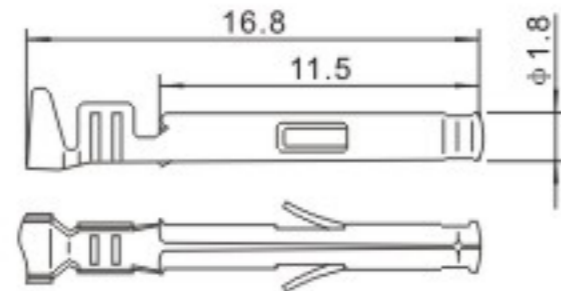
- 线数 (Poles) : 1~24
- 适用线规 (Applicable wires) : AWG28#~18#
- 适应基板厚度 (Applicable PC board thickness) : 1.6mm
- 温度范围 (Temperature range) : -25°C~105°C
- 额定电压 (Voltage rating) : 300V.Ac/Dc
- 额定电流 (Current rating) : 8A max
- 接触电阻 (Contact resistance) : ≤0.015Ω
- 绝缘电阻 (Insulation resistance) : ≥1000MΩ
- 耐压 (Withstand voltage) : 1500V.Ac/1min
- 材料 (Material) :
 - 插头 (Plug housing) : 尼龙 (PA66) UL94V-2(0)
 - 插座 (Receptacle housing) : 尼龙 (PA66) UL94V-2(0)
 - 端子 (Terminal) : 磷青铜 (Phos.bronze Tin/plated)



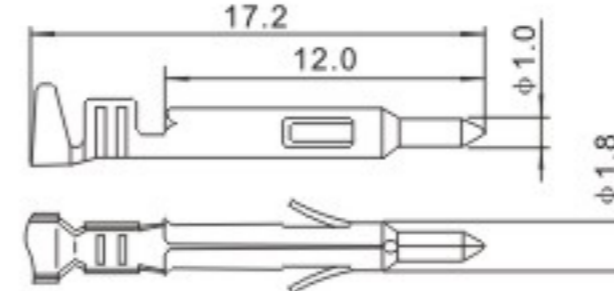
端子 TERMINAL (FL)

| 型号 Type | 适用线规 Applicable wires | | 电线外径 O.D of wire ins mm | 数量 Quantity | 型号 Type | 适用线规 Applicable wires | | 电线外径 O.D of wire ins mm | 数量 Quantity |
|--------------|--------------------------|-------|-------------------------------|----------------|--------------|--------------------------|-------|-------------------------------|----------------|
| | mm ² | AWG# | | | | mm ² | AWG# | | |
| HX41405-01PT | 0.09~0.2 | 28~24 | 0.9~1.4 | 5000PCS/盘 | HX41405-21PT | 0.25~0.75 | 22~18 | 1.6~2.6 | 3500PCS/盘 |
| HX41406-01RT | 0.09~0.2 | 28~24 | 0.9~1.4 | 5000PCS/盘 | HX41406-21RT | 0.25~0.75 | 22~18 | 1.6~2.6 | 3500PCS/盘 |

HX41405-01PT (170361-1)
HX41405-21PT (170362-1)



HX41406-01RT (170359-1)
HX41406-21RT (170360-1)



| 线数 (Poles) | 额定电流 (Current rating) | 插头 (Plug Housing) | 插座 (Receptacle Housing) | 针座 (Wafer) |
|---------------|--------------------------|-----------------------------------------|----------------------------------------------------------------------------------|------------------------------------------------------|
| 1 | 8A | <p>HX41405-1P (172164-1) (172335-1)</p> | <p>HX41406-1RF (172156-1) (172327-1)</p> | |
| 2 | 8A | <p>HX41405-2P (172165-1) (172336-1)</p> | <p>HX41406-2R (172157-1) (172328-1)</p> <p>HX41406-2RF (172233-1) (172343-1)</p> | <p>HX41406-2A (770166-1)</p> <p>HX41405-2DS (FL)</p> |
| 3 | 8A | <p>HX41405-3P (172166-1) (172337-1)</p> | <p>HX41406-3R (172158-1) (172329-1)</p> | <p>HX41406-3A (770170-1)</p> |
| 4 | 7A | <p>HX41405-4P (172167-1) (172338-1)</p> | <p>HX41406-4R (172159-1) (172330-1)</p> | <p>HX41406-4A (770174-1)</p> |



| 线数 (Poles) | 额定电流 (Current rating) | 插头 (Plug Housing) | 插座 (Receptacle Housing) | 针座 (Wafer) |
|------------|-----------------------|------------------------------------------|------------------------------------------|--------------------------------|
| 6 | 7A | <p>HX41405-6P (172168-1) (172339-1)</p> | <p>HX41406-6R (172160-1) (172331-1)</p> | <p>HX41406-6A (770178-1)</p> |
| 8 | 6A | <p>HX41405-8P (770579-1)</p> | <p>HX41406-8R (794941-1)</p> | <p>HX41406-8A (794065-1)</p> |
| 9 | 6A | <p>HX41405-9P (172169-1) (172340-1)</p> | <p>HX41406-9R (172161-1) (172332-1)</p> | <p>HX41406-9A (770182-1)</p> |
| 10 | 6A | <p>HX41405-10P (770580-1)</p> | <p>HX41406-10R (794942-1)</p> | <p>HX41406-10A (770743-1)</p> |
| 12 (3X4) | 6A | <p>HX41405-12P (172170-1) (172341-1)</p> | <p>HX41406-12R (172162-1) (172333-1)</p> | <p>HX41406-12A (770186-1)</p> |
| | | <p>HX41406-12RF</p> | | |
| 12 (2X6) | 6A | <p>HX41405-12PN (770581-1)</p> | <p>HX41406-12RN (794943-1)</p> | <p>HX41406-12AN (794066-1)</p> |

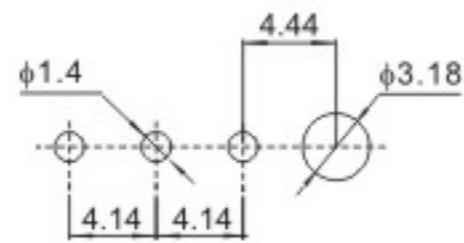
| 线数 (Poles) | 额定电流 (Current rating) | 插头 (Plug Housing) | 插座 (Receptacle Housing) | 针座 (Wafer) |
|------------|-----------------------|----------------------------------------------|----------------------------------------------|-----------------------------------|
| 14 | 6A | HX41405-14P (770582-1) | HX41406-14R (794944-1) | HX41406-14A (794067-1) |
| | | HX41405-15P (172171-1) (172342-1) | HX41406-15R (172163-1) (172334-1) | HX41406-15A (770190-1) |
| 15 | 6A | HX41405-16P (770583-1) | HX41406-15RF | |
| | | | HX41406-16R (794945-1) | HX41406-16A (794068-1) |
| 16 | 6A | | | |
| | | | | |

| 线数 (Poles) | 额定电流 (Current rating) | 插头 (Plug Housing) | 插座 (Receptacle Housing) | 针座 (Wafer) |
|------------|-----------------------|-------------------------------|-------------------------------|-------------------------------|
| 18 | 6A | <p>HX41405-18P (770584-1)</p> | <p>HX41406-18R (794946-1)</p> | <p>HX41406-18A (794069-1)</p> |
| | | <p>HX41405-20P (770585-1)</p> | <p>HX41406-20R (794947-1)</p> | <p>HX41406-20A (794070-1)</p> |
| | | <p>HX41405-22P (770586-1)</p> | <p>HX41406-22R (794948-1)</p> | <p>HX41406-22A (794071-1)</p> |

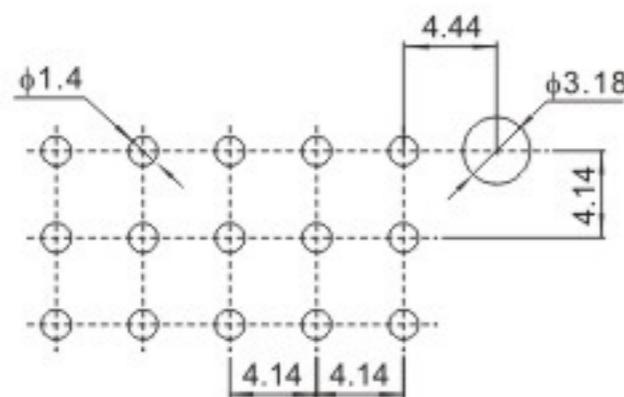
| 线数 (Poles) | 额定电流 (Current rating) | 插头 (Plug Housing) | 插座 (Receptacle Housing) | 针座 (Wafer) |
|------------|-----------------------|-------------------------------|-------------------------------|-------------------------------|
| 24 | 6A | <p>HX41405-24P (770587-1)</p> | <p>HX41406-24R (794949-1)</p> | <p>HX41406-24A (794072-1)</p> |

FL-A 安装尺寸

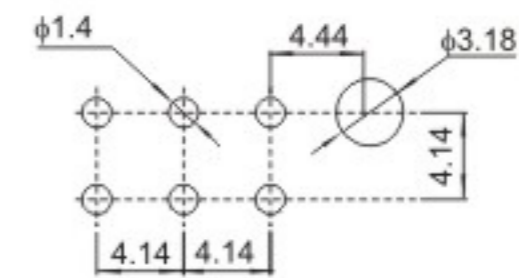
MOUNTING MEASUREMENT



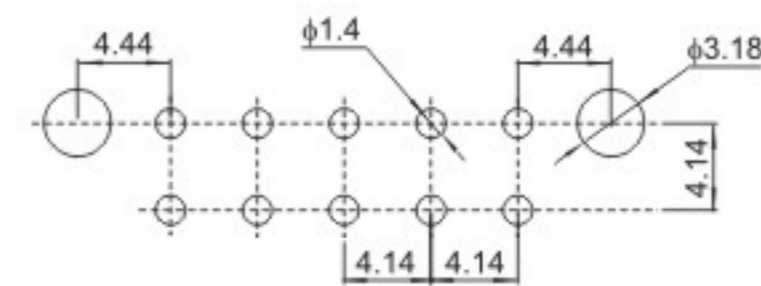
2A ~ 3A



9A、12A、15A



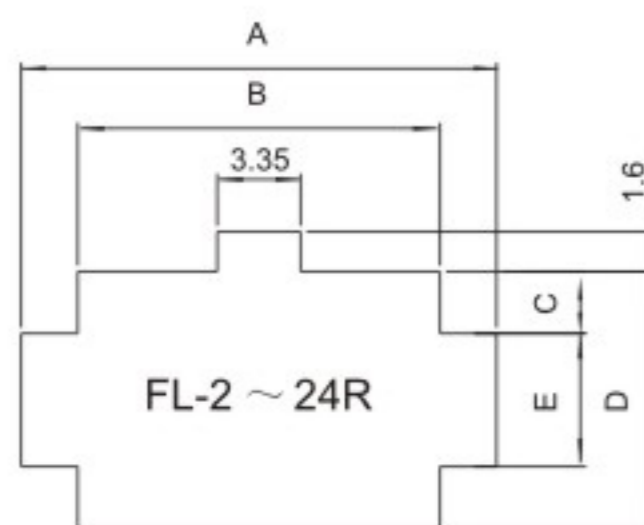
4A、6A、8A、10A、12A



14A、16A、18A、20A、22A、24A

FL-R 安装尺寸

MOUNTING MEASUREMENT



| 线数 Poles | 型号 Type | 尺寸 Dimensions(mm) | | | | |
|----------|--------------|-------------------|-------|-----|-------|------|
| | | A | B | C | D | E |
| 2 | HX41406-2R | 10.7 | 6.15 | 2.5 | 10.35 | 5.35 |
| 3 | HX41406-3R | 10.7 | 6.15 | 4.6 | 14.55 | 5.35 |
| 4 | HX41406-4R | 14.9 | 10.35 | 2.5 | 10.35 | 5.35 |
| 6 | HX41406-6R | 19.1 | 14.55 | 2.5 | 10.35 | 5.35 |
| 8 | HX41406-8R | 23.3 | 18.75 | 2.5 | 10.35 | 5.35 |
| 9 | HX41406-9R | 19.1 | 14.55 | 4.6 | 14.55 | 5.35 |
| 10 | HX41406-10R | 27.5 | 22.95 | 2.5 | 10.35 | 5.35 |
| 12(3x4) | HX41406-12R | 23.3 | 18.75 | 4.6 | 14.55 | 5.35 |
| 12(2x6) | HX41406-12RN | 31.7 | 27.15 | 2.5 | 10.35 | 5.35 |
| 14 | HX41406-14R | 35.9 | 31.35 | 2.5 | 10.35 | 5.35 |
| 15 | HX41406-15R | 27.5 | 22.95 | 4.6 | 14.55 | 5.35 |
| 16 | HX41406-16R | 40.1 | 35.55 | 2.5 | 10.35 | 5.35 |
| 18 | HX41406-18R | 44.3 | 39.75 | 2.5 | 10.35 | 5.35 |
| 20 | HX41406-20R | 48.5 | 43.95 | 2.5 | 10.35 | 5.35 |
| 22 | HX41406-22R | 52.7 | 48.15 | 2.5 | 10.35 | 5.35 |
| 24 | HX41406-24R | 56.9 | 52.35 | 2.5 | 10.35 | 5.35 |

X-ON Electronics

Largest Supplier of Electrical and Electronic Components

Click to view similar products for [Terminals](#) category:

Click to view products by [Hongxing](#) manufacturer:

Other Similar products are found below :

[00-054007-01074-6](#) [00-054007-70206-1](#) [00-054007-70210-8](#) [00-054007-70217-7](#) [00-054007-70228-3](#) [00-054007-70256-6](#) [00-054007-70316-7](#) [00-054007-49560-4](#) [00-054007-70209-2](#) [00-054007-70231-3](#) [00-054007-70241-2](#) [00-054007-70242-9](#) [00-054007-70246-7](#) [00-054007-70263-4](#) [00-054007-70288-7](#) [00-054007-70290-0](#) [00-054007-70300-6](#) [00-054007-70304-4](#) [01-2900-1-04412](#) [00581P0075](#) [600TS-10](#) [604200-1](#) [605601-1](#) [60598-1-CUT-TAPE](#) [60617-1-C](#) [61314-6-C](#) [61810-3](#) [62149-1](#) [626-0194](#) [62-NBM-A](#) [62-SP](#) [63-S](#) [M55155/059I03](#)
[M55155/079C01](#) [M55155/099B03](#) [M55155/099H02](#) [M55155/109H01](#) [M55155/12XH05](#) [M55155/16XH02](#) [M55155/29-5S](#) [M55155/29XJ08](#)
[M55155/30-6S](#) [M55155/30-9S](#) [M55155/30XI09](#) [696683-1](#) [696861-1](#) [696999-1](#) [M86700006](#) [D18-110B-C](#) [D18-110B-M](#)