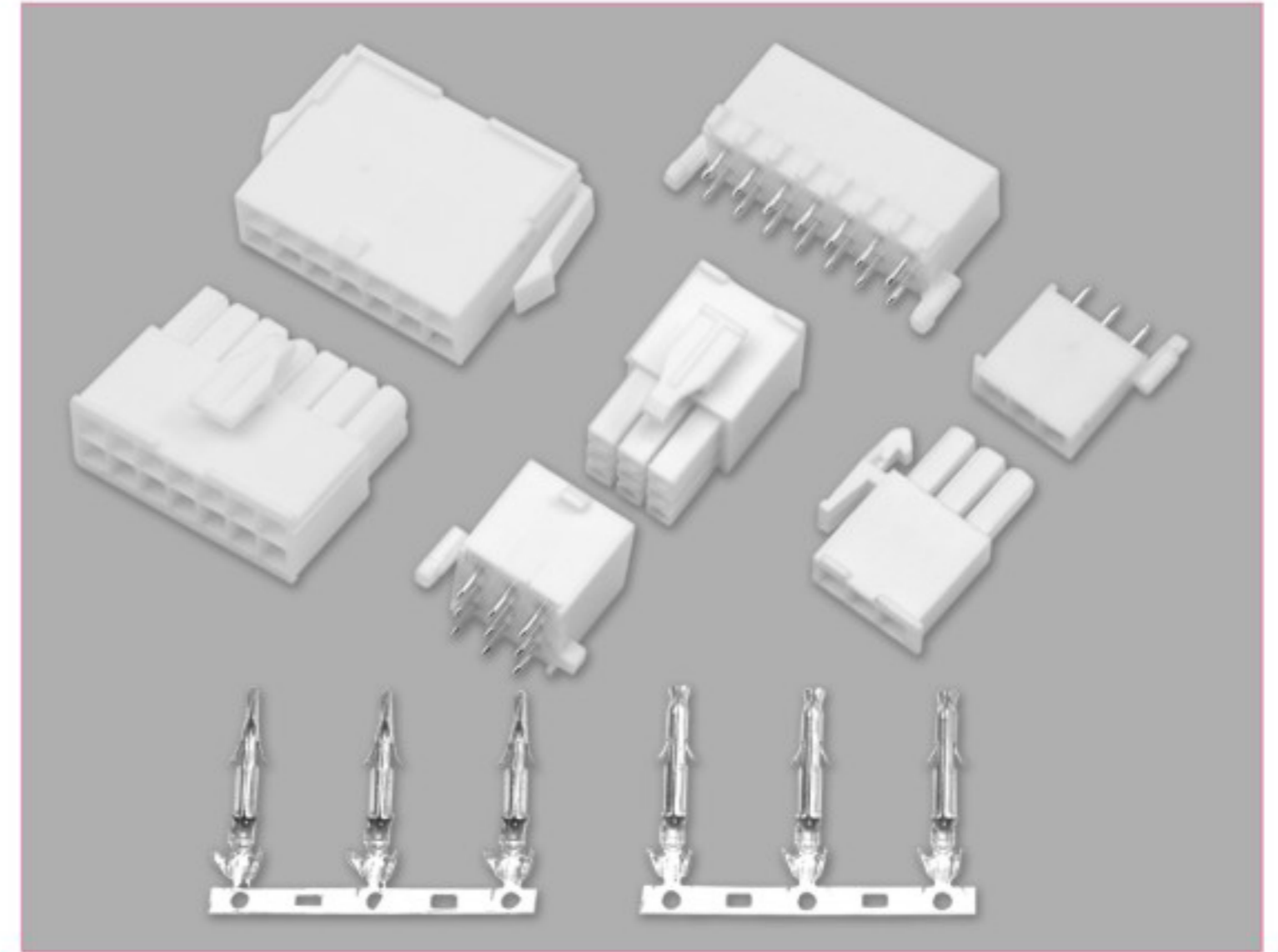


### ■ 技术参数 SPECIFICATIONS

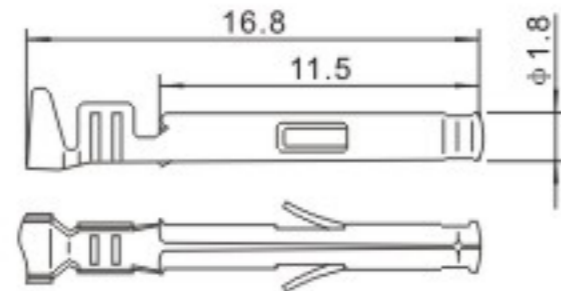
- 线数 (Poles) : 1~24
- 适用线规 (Applicable wires) : AWG28#~18#
- 适应基板厚度 (Applicable PC board thickness) : 1.6mm
- 温度范围 (Temperature range) : -25℃~105℃
- 额定电压 (Voltage rating) : 300V.Ac/Dc
- 额定电流 (Current rating) : 8A max
- 接触电阻 (Contact resistance) : ≤0.015Ω
- 绝缘电阻 (Insulation resistance) : ≥1000MΩ
- 耐压 (Withstand voltage) : 1500V.Ac/1min
- 材料 (Material) :
  - 插头 (Plug housing) : 尼龙 (PA66) UL94V-2(0)
  - 插座 (Receptacle housing) : 尼龙 (PA66) UL94V-2(0)
  - 端子 (Terminal) : 磷青铜 (Phos.bronze Tin/plated)



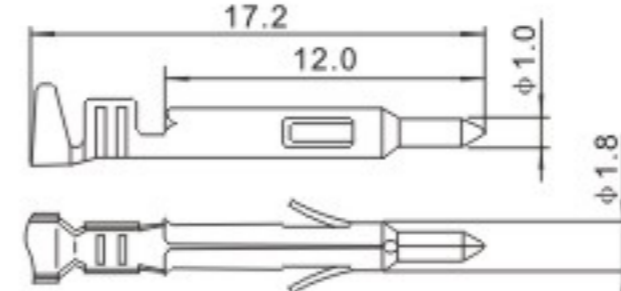
### 端子 TERMINAL (FL)

| 型号<br>Type   | 适用线规<br>Applicable wires |       | 电线外径<br>O.D of wire ins<br>mm | 数量<br>Quantity | 型号<br>Type   | 适用线规<br>Applicable wires |       | 电线外径<br>O.D of wire ins<br>mm | 数量<br>Quantity |
|--------------|--------------------------|-------|-------------------------------|----------------|--------------|--------------------------|-------|-------------------------------|----------------|
|              | mm <sup>2</sup>          | AWG#  |                               |                |              | mm <sup>2</sup>          | AWG#  |                               |                |
| HX41405-01PT | 0.09~0.2                 | 28~24 | 0.9~1.4                       | 5000PCS/盘      | HX41405-21PT | 0.25~0.75                | 22~18 | 1.6~2.6                       | 3500PCS/盘      |
| HX41406-01RT | 0.09~0.2                 | 28~24 | 0.9~1.4                       | 5000PCS/盘      | HX41406-21RT | 0.25~0.75                | 22~18 | 1.6~2.6                       | 3500PCS/盘      |

HX41405-01PT (170361-1)  
HX41405-21PT (170362-1)



HX41406-01RT (170359-1)  
HX41406-21RT (170360-1)



| 线数<br>(Poles) | 额定电流<br>(Current rating) | 插头 ( Plug Housing )                     | 插座 ( Receptacle Housing )                                                        | 针座 ( Wafer )                                         |
|---------------|--------------------------|-----------------------------------------|----------------------------------------------------------------------------------|------------------------------------------------------|
| 1             | 8A                       | <p>HX41405-1P (172164-1) (172335-1)</p> | <p>HX41406-1RF (172156-1) (172327-1)</p>                                         |                                                      |
| 2             | 8A                       | <p>HX41405-2P (172165-1) (172336-1)</p> | <p>HX41406-2R (172157-1) (172328-1)</p> <p>HX41406-2RF (172233-1) (172343-1)</p> | <p>HX41406-2A (770166-1)</p> <p>HX41405-2DS (FL)</p> |
| 3             | 8A                       | <p>HX41405-3P (172166-1) (172337-1)</p> | <p>HX41406-3R (172158-1) (172329-1)</p>                                          | <p>HX41406-3A (770170-1)</p>                         |
| 4             | 7A                       | <p>HX41405-4P (172167-1) (172338-1)</p> | <p>HX41406-4R (172159-1) (172330-1)</p>                                          | <p>HX41406-4A (770174-1)</p>                         |



| 线数 (Poles) | 额定电流 (Current rating) | 插头 (Plug Housing)                        | 插座 (Receptacle Housing)                  | 针座 (Wafer)                     |
|------------|-----------------------|------------------------------------------|------------------------------------------|--------------------------------|
| 6          | 7A                    | <p>HX41405-6P (172168-1) (172339-1)</p>  | <p>HX41406-6R (172160-1) (172331-1)</p>  | <p>HX41406-6A (770178-1)</p>   |
| 8          | 6A                    | <p>HX41405-8P (770579-1)</p>             | <p>HX41406-8R (794941-1)</p>             | <p>HX41406-8A (794065-1)</p>   |
| 9          | 6A                    | <p>HX41405-9P (172169-1) (172340-1)</p>  | <p>HX41406-9R (172161-1) (172332-1)</p>  | <p>HX41406-9A (770182-1)</p>   |
| 10         | 6A                    | <p>HX41405-10P (770580-1)</p>            | <p>HX41406-10R (794942-1)</p>            | <p>HX41406-10A (770743-1)</p>  |
| 12 (3X4)   | 6A                    | <p>HX41405-12P (172170-1) (172341-1)</p> | <p>HX41406-12R (172162-1) (172333-1)</p> | <p>HX41406-12A (770186-1)</p>  |
|            |                       | <p>HX41406-12RF</p>                      |                                          |                                |
| 12 (2X6)   | 6A                    | <p>HX41405-12PN (770581-1)</p>           | <p>HX41406-12RN (794943-1)</p>           | <p>HX41406-12AN (794066-1)</p> |

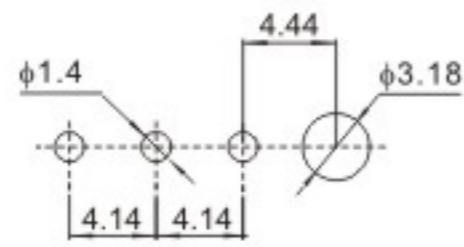
| 线数 (Poles) | 额定电流 (Current rating) | 插头 (Plug Housing)                        | 插座 (Receptacle Housing)                  | 针座 (Wafer)                    |
|------------|-----------------------|------------------------------------------|------------------------------------------|-------------------------------|
| 14         | 6A                    | <p>HX41405-14P (770582-1)</p>            | <p>HX41406-14R (794944-1)</p>            | <p>HX41406-14A (794067-1)</p> |
|            |                       | <p>HX41405-15P (172171-1) (172342-1)</p> | <p>HX41406-15R (172163-1) (172334-1)</p> | <p>HX41406-15A (770190-1)</p> |
|            |                       | <p>HX41406-15RF</p>                      |                                          |                               |
| 16         | 6A                    | <p>HX41405-16P (770583-1)</p>            | <p>HX41406-16R (794945-1)</p>            | <p>HX41406-16A (794068-1)</p> |

| 线数 (Poles) | 额定电流 (Current rating) | 插头 (Plug Housing)             | 插座 (Receptacle Housing)       | 针座 (Wafer)                    |
|------------|-----------------------|-------------------------------|-------------------------------|-------------------------------|
| 18         | 6A                    | <p>HX41405-18P (770584-1)</p> | <p>HX41406-18R (794946-1)</p> | <p>HX41406-18A (794069-1)</p> |
|            |                       | <p>HX41405-20P (770585-1)</p> | <p>HX41406-20R (794947-1)</p> | <p>HX41406-20A (794070-1)</p> |
|            |                       | <p>HX41405-22P (770586-1)</p> | <p>HX41406-22R (794948-1)</p> | <p>HX41406-22A (794071-1)</p> |

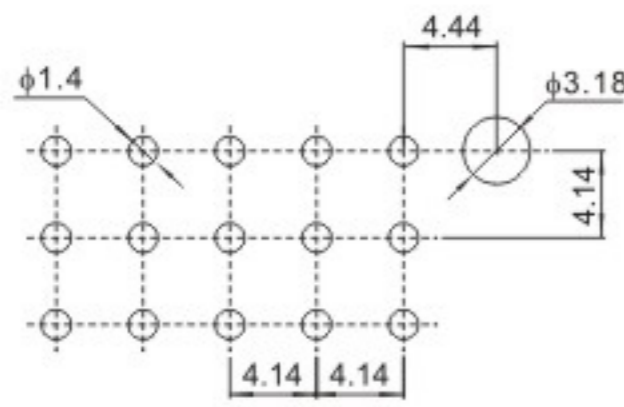
| 线数 (Poles) | 额定电流 (Current rating) | 插头 (Plug Housing)             | 插座 (Receptacle Housing)       | 针座 (Wafer)                    |
|------------|-----------------------|-------------------------------|-------------------------------|-------------------------------|
| 24         | 6A                    | <p>HX41405-24P (770587-1)</p> | <p>HX41406-24R (794949-1)</p> | <p>HX41406-24A (794072-1)</p> |

### FL-A 安装尺寸

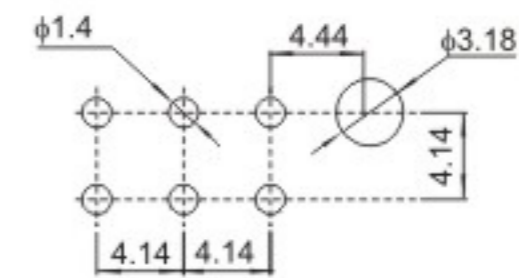
#### MOUNTING MEASUREMENT



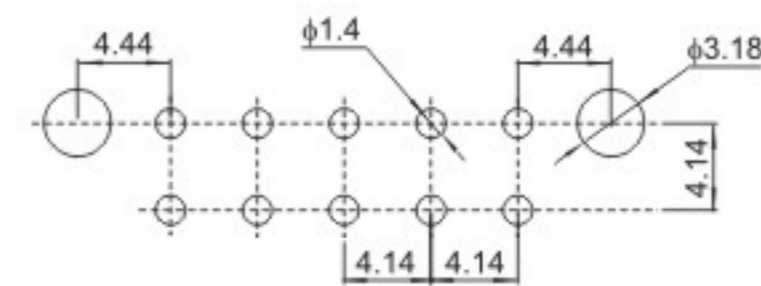
2A ~ 3A



9A、12A、15A



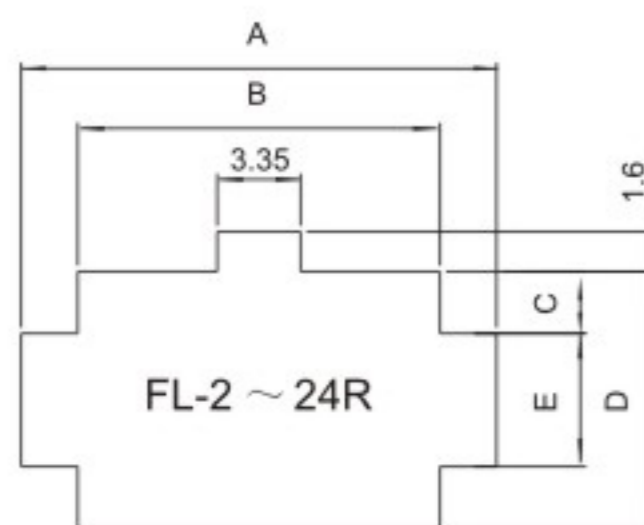
4A、6A、8A、10A、12A



14A、16A、18A、20A、22A、24A

### FL-R 安装尺寸

#### MOUNTING MEASUREMENT



| 线数 Poles | 型号 Type      | 尺寸 Dimensions(mm) |       |     |       |      |
|----------|--------------|-------------------|-------|-----|-------|------|
|          |              | A                 | B     | C   | D     | E    |
| 2        | HX41406-2R   | 10.7              | 6.15  | 2.5 | 10.35 | 5.35 |
| 3        | HX41406-3R   | 10.7              | 6.15  | 4.6 | 14.55 | 5.35 |
| 4        | HX41406-4R   | 14.9              | 10.35 | 2.5 | 10.35 | 5.35 |
| 6        | HX41406-6R   | 19.1              | 14.55 | 2.5 | 10.35 | 5.35 |
| 8        | HX41406-8R   | 23.3              | 18.75 | 2.5 | 10.35 | 5.35 |
| 9        | HX41406-9R   | 19.1              | 14.55 | 4.6 | 14.55 | 5.35 |
| 10       | HX41406-10R  | 27.5              | 22.95 | 2.5 | 10.35 | 5.35 |
| 12(3x4)  | HX41406-12R  | 23.3              | 18.75 | 4.6 | 14.55 | 5.35 |
| 12(2x6)  | HX41406-12RN | 31.7              | 27.15 | 2.5 | 10.35 | 5.35 |
| 14       | HX41406-14R  | 35.9              | 31.35 | 2.5 | 10.35 | 5.35 |
| 15       | HX41406-15R  | 27.5              | 22.95 | 4.6 | 14.55 | 5.35 |
| 16       | HX41406-16R  | 40.1              | 35.55 | 2.5 | 10.35 | 5.35 |
| 18       | HX41406-18R  | 44.3              | 39.75 | 2.5 | 10.35 | 5.35 |
| 20       | HX41406-20R  | 48.5              | 43.95 | 2.5 | 10.35 | 5.35 |
| 22       | HX41406-22R  | 52.7              | 48.15 | 2.5 | 10.35 | 5.35 |
| 24       | HX41406-24R  | 56.9              | 52.35 | 2.5 | 10.35 | 5.35 |

## X-ON Electronics

Largest Supplier of Electrical and Electronic Components

*Click to view similar products for [Headers & Wire Housings](#) category:*

*Click to view products by [Hongxing](#) manufacturer:*

Other Similar products are found below :

[57102-F02-18ULF](#) [58102-G61-06LF](#) [0009485154](#) [009176003701906](#) [0050291907](#) [02.125.8002.8](#) [609-3404](#) [61062-3](#) [622-0430](#) [622-3653LF](#)  
[63453-116](#) [636-1030](#) [636-1427](#) [636-3427](#) [636-4007](#) [641938-9](#) [644827-2](#) [65495-038](#) [65692-001LF](#) [65781-018](#) [65781-047](#) [65817-010LF](#)  
[65817-015LF](#) [66207-023LF](#) [67016-026LF](#) [67095-007LF](#) [68631-112](#) [68645-018](#) [68648-049](#) [699319-000](#) [70.362.1628.0](#) [70-4210](#) [70-4226B](#)  
[70-4853B](#) [707-5020](#) [707-5028](#) [71.350.2428.0](#) [71961-016LF](#) [733-134](#) [754199-000](#) [760-3052](#) [787-8014-00](#) [FCN-367T-T012/H](#) [80.063.4001.1](#)  
[800-90-001-10-001000](#) [800-90-010-10-002000](#) [801-43-002-10-013000](#) [801-43-006-10-002000](#) [803-41-018-10-001000](#) [803-43-014-20-](#)  
[001000](#)