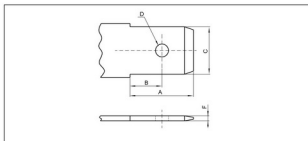


技术参数 SPECIFICATIONS

- 适用线规 (Applicable wires) : AWG24#~16#
- 温度范围 (Temperature range) : -25℃~85℃
- 额定电压 (Voltage rating) : 300V.Ac/Dc
- 额定电流 (Current rating) : 12A max
- 接触电阻 (Contact resistance) : $\leq 0.01\Omega$
- 绝缘电阻 (Insulation resistance) : $\geq 1000M\Omega$
- 耐压 (Withstand voltage) : 2000V.Ac/1min
- 材料 (Material) :
 - 壳体 (Housing) : 尼龙 (PA66) UL94V-2(0)
 - 端子 (Terminal) : 磷青铜 (Phos.bronze Tin/plated)
黄铜 (B.rass Tin/plated)

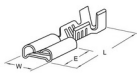
.110/.187* 端子 TERMINAL

| 型号 Type | | 适用线规 Applicable wires | | 材料 Material | 尺寸Dimensions (mm) | | | | 示图 Sample | 数量 Quantity |
|------------|--------------|--------------------------|-------|--------------------|-------------------|------|-----|-------------------|--------------|----------------|
| | | mm' | AWG# | | W | L | E | 材料厚度 Thickness | | |
| HX480N-01T | ST0-01T-187N | 0.2~0.5 | 24~20 | 黄铜 Brass | 5.7 | 15.0 | 6.5 | 0.35 | A | 10000PCS/卷 |
| HX480N-41T | ST0-41T-187N | 0.5~1.25 | 20~16 | | 5.7 | 15.0 | 6.5 | 0.35 | | 10000PCS/卷 |
| HX480N-61T | ST0-61T-187N | (UL1015) 20+18 | | | 5.7 | 15.0 | 6.5 | 0.35 | | 10000PCS/卷 |
| HX28010-PT | 730629-3 | 0.5~1.42 | 20~16 | 磷青铜 Phos.bronze | 3.8 | 15.6 | 7.6 | 0.25 | B | 15000PCS/卷 |



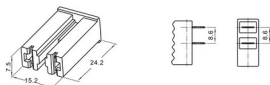
| 型号 Type | 尺寸Dimensions (mm) | | | | |
|------------|-------------------|-----|-----|------------|-----|
| | A | B | C | D | F |
| .187* | 7.0 | 3.6 | 4.8 | $\phi 1.5$ | 0.5 |

HX480N-T

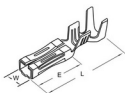


(A)

HX480-187ZH

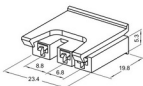


HX28010-PT

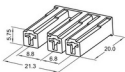


(B)

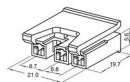
HX28010-3P (610539)



HX28015-3P



HX28020-3P (610815)



X-ON Electronics

Largest Supplier of Electrical and Electronic Components

Click to view similar products for [Headers & Wire Housings](#) category:

Click to view products by [Hongxing](#) manufacturer:

Other Similar products are found below :

[95000-104TRLF](#) [10135584-644402LF](#) [DF62W-EP2022PCA](#) [95000-106TRLF](#) [DF62W-2022SCA](#) [DF62W-EP2022PC](#) [2203348](#) [DF62W-2022SC](#) [1084018](#) [1029039](#) [1084017](#) [802-10-012-10-002000](#) [1112640](#) [1112639](#) [891-007-9SS-BST1T](#) [000-34000](#) [0008550134](#) [0009482033](#) [0009507031](#) [57102-F02-18ULF](#) [57102-S06-03LF](#) [57202-S52-04LF](#) [PCN6-15S-2.5E](#) [0039019024](#) [58102-G61-06LF](#) [582553-1](#) [0009485154](#) [0009508121](#) [0022285053](#) [0050291907](#) [018731A](#) [LY20-4P-DT1-P1E-BR](#) [02.125.8002.8](#) [60101931](#) [60598-1 \(Cut Strip\)](#) [M1625-3R/100](#) [61062-3](#) [61082-181009](#) [CSU011177004](#) [636-1427](#) [638009-1](#) [641938-9](#) [641991-4](#) [644168-1](#) [644827-2](#) [647662-1](#) [65039-019ELF](#) [65692-001LF](#) [65781-018](#) [65781-047](#)