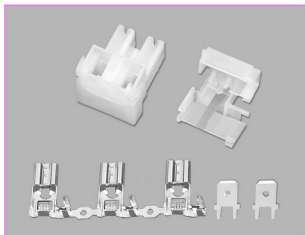


技术参数 SPECIFICATIONS

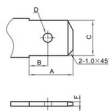
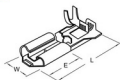
- 适用线规 (Applicable wires) : AWG20#~12#
- 温度范围 (Temperature range) : -25℃~85℃
- 额定电压 (Voltage rating) : 300V.Ac/Dc
- 额定电流 (Current rating) : 18A max
- 接触电阻 (Contact resistance) : $\leq 0.01\Omega$
- 绝缘电阻 (Insulation resistance) : $\geq 1000M\Omega$
- 耐压 (Withstand voltage) : 2000V.Ac/1min
- 材料 (Material) :
 - 壳体 (Housing) : 尼龙 (PA66) UL94V-2(0)
 - 端子 (Terminal) : 黄铜 (Brass Tin/plated)



.250" 端子 TERMINAL

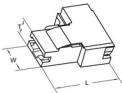
型号 Type	适用线规 Applicable wires	材料 Material	尺寸 Dimensions (mm)				数量 Quantity		
			mm ²	AWG#	W	L		E	材料厚度 Thickness
HX6.3HS-21T	730574-3	黄铜	0.5~1.25	20~16	7.5	20.1	9.5	0.4	5000PCS/卷
HX6.3HS-41T	730575-3	Brass	2.0~3.1	14~12	7.5	20.1	9.5	0.4	5000PCS/卷

HX6.3HS-T

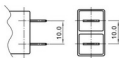
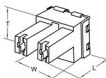


型号 Type	尺寸 Dimensions (mm)				
	A	B	C	D	F
.250"	8.3	3.8	6.35	φ2.0	0.8

.250" 壳体 HOUSING



型号 Type	尺寸 Dimensions (mm)			适配端子 Suitable Terminal
	L	T	W	
HX 6.3QS (630592.250)	23.5	5.7	9.8	HX6.3HS-21T HX6.3HS-41T



型号 Type	尺寸 Dimensions (mm)			适配端子 Suitable Terminal
	L	T	W	
HX 6.3S-2H (630823.250)	24.0	19.3	17.8	HX6.3HS-21T HX6.3HS-41T

X-ON Electronics

Largest Supplier of Electrical and Electronic Components

Click to view similar products for [Terminals](#) category:

Click to view products by [Hongxing](#) manufacturer:

Other Similar products are found below :

[HT-13-10](#) [71M-250-32-NB](#) [01-2065-1-0216](#) [00581P0075](#) [M10-10RX](#) [M10BCK](#) [60205-1](#) [604200-1](#) [60598-1-CUT-TAPE](#) [60617-1-C](#) [60873-1](#) [M14-516R/SK](#) [M14-6RSX](#) [M18-10FLX](#) [M18-8FBX](#) [M18-8R/LX](#) [M18BCK](#) [61314-6-C](#) [61-S](#) [61-SN-A](#) [62-NBM-A](#) [63-S](#) [640179-1](#) [640917-2-CUT-TAPE](#) [6501550002](#) [66107-2-C](#) [66107-4-C](#) [696683-1](#) [696834-1](#) [696861-1](#) [696931-1](#) [696999-1](#) [M8-516RK](#) [M86700006](#) [MA250DMFMX-A](#) [701-2007](#) [701-2307](#) [701-7761-03](#) [70F-110-32-PB](#) [718-N-A](#) [71M-187-20-NBL](#) [71M-250-32-NBL](#) [72F-187-20-NBL](#) [72M-250-32-NBL](#) [7310](#) [73F-250-32](#) [73F-250-32-NBL](#) [73F-250-32-NL](#) [F14-10C](#) [F-1M](#)