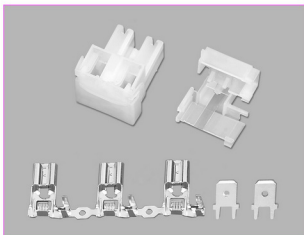


技术参数 SPECIFICATIONS

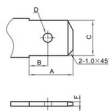
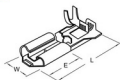
- 适用线规 (Applicable wires) : AWG20#~12#
- 温度范围 (Temperature range) : -25℃~85℃
- 额定电压 (Voltage rating) : 300V.Ac/Dc
- 额定电流 (Current rating) : 18A max
- 接触电阻 (Contact resistance) : $\leq 0.01\Omega$
- 绝缘电阻 (Insulation resistance) : $\geq 1000M\Omega$
- 耐压 (Withstand voltage) : 2000V.Ac/1min
- 材料 (Material) :
 - 壳体 (Housing) : 尼龙 (PA66) UL94V-2(0)
 - 端子 (Terminal) : 黄铜 (Brass Tin/plated)



.250" 端子 TERMINAL

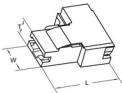
型号 Type	适用线规 Applicable wires	材料 Material	尺寸 Dimensions (mm)				数量 Quantity		
			mm ²	AWG#	W	L		E	材料厚度 Thickness
HX6.3HS-21T	730574-3	黄铜	0.5~1.25	20~16	7.5	20.1	9.5	0.4	5000PCS/卷
HX6.3HS-41T	730575-3	Brass	2.0~3.1	14~12	7.5	20.1	9.5	0.4	5000PCS/卷

HX6.3HS-1T

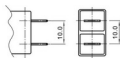
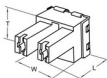


型号 Type	尺寸 Dimensions (mm)				
	A	B	C	D	F
.250"	8.3	3.8	6.35	φ2.0	0.8

.250" 壳体 HOUSING



型号 Type	尺寸 Dimensions (mm)			适配端子 Suitable Terminal
	L	T	W	
HX 6.3QS (630592.250)	23.5	5.7	9.8	HX6.3HS-21T HX6.3HS-41T



型号 Type	尺寸 Dimensions (mm)			适配端子 Suitable Terminal
	L	T	W	
HX 6.3S-2H (630823.250)	24.0	19.3	17.8	HX6.3HS-21T HX6.3HS-41T

X-ON Electronics

Largest Supplier of Electrical and Electronic Components

Click to view similar products for [Headers & Wire Housings](#) category:

Click to view products by [Hongxing](#) manufacturer:

Other Similar products are found below :

[95000-104TRLF](#) [10135584-644402LF](#) [DF62W-EP2022PCA](#) [95000-106TRLF](#) [DF62W-2022SCA](#) [DF62W-EP2022PC](#) [2203348](#) [DF62W-2022SC](#) [1084018](#) [1029039](#) [1084017](#) [802-10-012-10-002000](#) [1112640](#) [1112639](#) [891-007-9SS-BST1T](#) [000-34000](#) [0008550134](#) [0009482033](#) [0009507031](#) [57102-F02-18ULF](#) [57102-S06-03LF](#) [57202-S52-04LF](#) [PCN6-15S-2.5E](#) [0039019024](#) [58102-G61-06LF](#) [582553-1](#) [0009485154](#) [0009508121](#) [0022285053](#) [0050291907](#) [018731A](#) [LY20-4P-DT1-P1E-BR](#) [02.125.8002.8](#) [60101931](#) [60598-1 \(Cut Strip\)](#) [M1625-3R/100](#) [61062-3](#) [61082-181009](#) [CSU011177004](#) [636-1427](#) [638009-1](#) [641938-9](#) [641991-4](#) [644168-1](#) [644827-2](#) [647662-1](#) [65039-019ELF](#) [65692-001LF](#) [65781-018](#) [65781-047](#)