

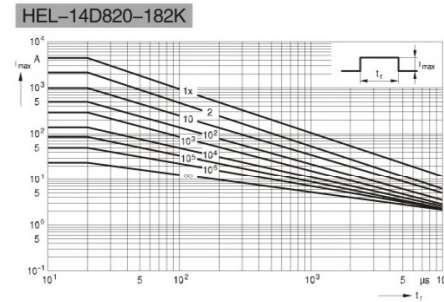
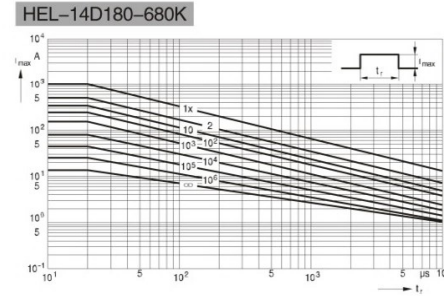
14D系列 HEL 压敏电阻 HEL VARISTOR WITH 14MM DIAMETER

| 型号规格 Part No. | 压敏电压 Varistor Voltage | | 最大允许 使用电压 Maximum Allowable Voltage | | 最大限制 电压 Maximum Clamping Voltage | | 通流容量 Withstanding Surge Current (8/20 μs) 1 time | | 静态功率 Rated Wattage | | 能量容量 Energy (2ms) | | 静态电容量 (参考值) Typical Capacitance | |
|------------------|--------------------------|-------------|---|-------------------------|--|--------------------|--|----------|--------------------------|--------------|-------------------------|--|--|--|
| | V _{1mA} (V) | AC (V) | DC (V) | V _{50A} (V) | K class (A) | KJ class (A) | (W) | K (J) | KJ (J) | 1kHz (PF) | | | | |
| HEL-14D180 | 18 | (16-20) | 11 | 14 | · 38 | 1000 | 2000 | 0.1 | 3.2 | 4.1 | 18,000 | | | |
| HEL-14D220 | 22 | (20-24) | 14 | 18 | · 43 | 1000 | 2000 | 0.1 | 4.0 | 5.0 | 15,000 | | | |
| HEL-14D270 | 27 | (24-30) | 17 | 22 | · 53 | 1000 | 2000 | 0.1 | 4.9 | 6.1 | 10,000 | | | |
| HEL-14D330 | 33 | (30-36) | 20 | 26 | · 65 | 1000 | 2000 | 0.1 | 5.9 | 7.4 | 8,500 | | | |
| HEL-14D390 | 39 | (35-43) | 25 | 31 | · 77 | 1000 | 2000 | 0.1 | 7.0 | 8.8 | 7,500 | | | |
| HEL-14D470 | 47 | (42-52) | 30 | 38 | · 93 | 1000 | 2000 | 0.1 | 8.5 | 10.6 | 6,500 | | | |
| HEL-14D560 | 56 | (50-62) | 35 | 45 | · 110 | 1000 | 2000 | 0.1 | 10.1 | 12.6 | 5,600 | | | |
| HEL-14D680 | 68 | (61-75) | 40 | 56 | · 135 | 1000 | 2000 | 0.1 | 12.2 | 15.3 | 4,700 | | | |
| HEL-14D820 | 82 | (74-90) | 50 | 65 | 135 | 4500 | 6000 | 0.6 | 14.8 | 18.5 | 3,900 | | | |
| HEL-14D101 | 100 | (90-110) | 60 | 85 | 165 | 4500 | 6000 | 0.6 | 18.0 | 22.5 | 3,400 | | | |
| HEL-14D121 | 120 | (108-132) | 75 | 100 | 200 | 4500 | 6000 | 0.6 | 21.6 | 27.0 | 3,100 | | | |
| HEL-14D151 | 150 | (135-165) | 95 | 125 | 250 | 4500 | 6000 | 0.6 | 27.0 | 33.8 | 3,000 | | | |
| HEL-14D181 | 180 | (162-198) | 115 | 150 | 300 | 4500 | 6000 | 0.6 | 32.4 | 40.5 | 1,030 | | | |
| HEL-14D201 | 200 | (185-225) | 130 | 170 | 340 | 4500 | 6000 | 0.6 | 36.0 | 45.0 | 970 | | | |
| HEL-14D221 | 220 | (198-242) | 140 | 180 | 360 | 4500 | 6000 | 0.6 | 39.6 | 49.5 | 840 | | | |
| HEL-14D241 | 240 | (216-264) | 150 | 200 | 395 | 4500 | 6000 | 0.6 | 43.2 | 54.0 | 710 | | | |
| HEL-14D271 | 270 | (243-297) | 175 | 225 | 455 | 4500 | 6000 | 0.6 | 48.6 | 60.8 | 650 | | | |
| HEL-14D301 | 300 | (270-330) | 195 | 250 | 505 | 4500 | 6000 | 0.6 | 54.0 | 67.5 | 600 | | | |
| HEL-14D331 | 330 | (297-363) | 210 | 275 | 550 | 4500 | 6000 | 0.6 | 59.4 | 74.3 | 550 | | | |
| HEL-14D361 | 360 | (324-396) | 230 | 300 | 595 | 4500 | 6000 | 0.6 | 64.8 | 81.0 | 500 | | | |
| HEL-14D391 | 390 | (351-429) | 250 | 320 | 650 | 4500 | 6000 | 0.6 | 70.2 | 87.8 | 480 | | | |
| HEL-14D431 | 430 | (387-473) | 275 | 350 | 710 | 4500 | 6000 | 0.6 | 77.4 | 96.8 | 440 | | | |
| HEL-14D471 | 470 | (423-517) | 300 | 385 | 775 | 4500 | 6000 | 0.6 | 84.6 | 105.8 | 420 | | | |
| HEL-14D511 | 510 | (459-561) | 320 | 418 | 842 | 4500 | 6000 | 0.6 | 84.6 | 105.8 | 390 | | | |
| HEL-14D561 | 560 | (504-616) | 350 | 460 | 920 | 4500 | 6000 | 0.6 | 84.6 | 105.8 | 360 | | | |
| HEL-14D621 | 620 | (558-682) | 385 | 505 | 1,025 | 4500 | 6000 | 0.6 | 84.6 | 105.8 | 320 | | | |
| HEL-14D681 | 680 | (612-748) | 420 | 560 | 1,120 | 4500 | 6000 | 0.6 | 84.6 | 105.8 | 290 | | | |
| HEL-14D751 | 750 | (675-825) | 460 | 615 | 1,240 | 4500 | 6000 | 0.6 | 90.0 | 112.5 | 260 | | | |
| HEL-14D781 | 780 | (702-858) | 485 | 640 | 1,290 | 4500 | 6000 | 0.6 | 93.6 | 117.0 | 230 | | | |
| HEL-14D821 | 820 | (738-902) | 510 | 670 | 1,355 | 4500 | 6000 | 0.6 | 98.4 | 123.0 | 230 | | | |
| HEL-14D911 | 910 | (819-1001) | 550 | 745 | 1,500 | 4500 | 6000 | 0.6 | 109.2 | 136.5 | 200 | | | |
| HEL-14D951 | 950 | (855-1045) | 580 | 780 | 1,570 | 4500 | 6000 | 0.6 | 113.7 | 142.1 | 190 | | | |
| HEL-14D102 | 1000 | (900-1100) | 625 | 825 | 1,650 | 4500 | 6000 | 0.6 | 120.0 | 150.0 | 180 | | | |
| HEL-14D112 | 1100 | (990-1210) | 680 | 895 | 1,815 | 4500 | 6000 | 0.6 | 132.0 | 165.0 | 150 | | | |
| HEL-14D152 | 1500 | (1350-1650) | 900 | 1220 | 2,475 | 4500 | 6000 | 0.6 | 179.0 | 223.0 | 140 | | | |
| HEL-14D182 | 1800 | (1620-1980) | 1,000 | 1,465 | 2,970 | 4500 | 6000 | 0.6 | 216.0 | 270.0 | 120 | | | |

• The clamping voltage from 180K to 680K is tested with current 10A,
Note: The energy (10/1000 μs) is about 1.4 times of energy (2ms).
• 180K至680K最大限制电压测试电流是10A。
注: 10/1000 μs的能量耐量值约为2ms能量耐量值的1.4倍

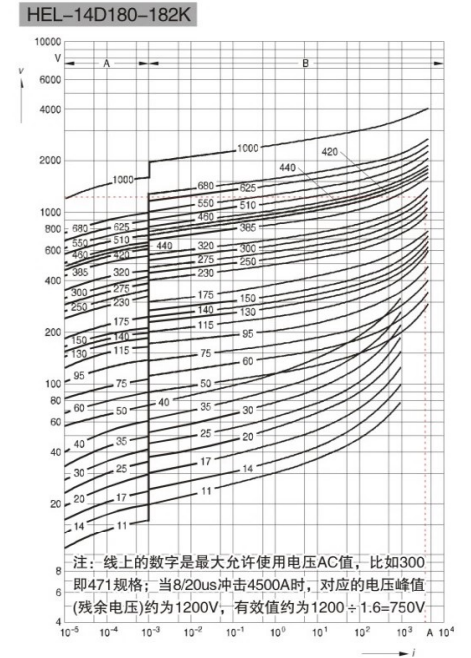
降额曲线图 Derating curves

横轴是冲击时间即浪涌波型宽度，纵轴是冲击电流峰值，
线上的数字是冲击次数；
Maximum surge current $I_{max} = f(t_r, \text{pulse train})$



伏安特性图 v/i characteristics

A区是泄漏电流区，A = Leakage current,
B区是冲击电流与限制电压对应区
B = Protection level for worst-case varistor tolerances



产品尺寸 DIMENSION

单位Unit: mm

| 产品外型 Product Shape | 系列 Series | 压敏电压 Varistor Voltage | 厚度 Tmax |
|-----------------------|--------------|--------------------------|------------|
| | 14D | 18V-39V | 7.5 |
| | | 47V-68V | 8.0 |
| | | 82V-150V | 8.5 |
| | | 180V-270V | 9.0 |
| | | 330V-390V | 9.5 |
| | | 430V-560V | 10.0 |
| | | 620V-780V | 10.5 |
| | | 820V-1200V | 11.0 |
| | | 1300V-1500V | 11.5 |
| | | 1600V-1800V | 12.0 |

X-ON Electronics

Largest Supplier of Electrical and Electronic Components

Click to view similar products for [Varistors](#) category:

Click to view products by [Hongzhi](#) manufacturer:

Other Similar products are found below :

[820443211E](#) [MOV05131AIA](#) [MOV07231AQA](#) [MOV18131CZA](#) [R71ZOV151HC](#) [D58ZOV500RA01T1](#) [B72205S271K111](#)
[B72214S110K151](#) [B72214S251K151](#) [B72232B131K1](#) [B72280B271K1](#) [B72530E1140S272](#) [B72540E250K62](#) [B72650M0151K093](#)
[B72660M0271K093](#) [NTE1V020](#) [NTE1V130](#) [NTE2V010](#) [NTE2V130](#) [238159352716](#) [25FN511K](#) [S10K11G5S5](#) [ERZ-C14DK361U](#) [ERZ-](#)
[C20DK221U](#) [ERZ-C32CK201B](#) [207869-1](#) [AS-13](#) [TMOV25SP625E](#) [TND10V-471KB00AAA0](#) [B72210S251K531](#) [B72214S200K551](#)
[B72280B112K1](#) [B72280B381K1](#) [B72590D360A60](#) [B72650M301K93](#) [B72670M1140K72](#) [MOV07251ARA](#) [MOV10131EDA](#)
[MOV10151EFA](#) [MOV14151CWA](#) [MOV20251DFA](#) [TVZ18EC271KBS](#) [TVZ20EB911KBS](#) [TVZ25D201KBS](#) [TVZ25D241KBS](#)
[VDRH20X230BSE](#) [VZ07D220KBS](#) [VZ40D241K](#) [VZ25D511KBS-N](#) [VZ20E511KBSX](#)