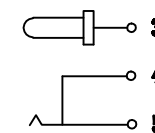
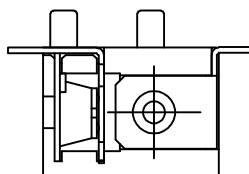
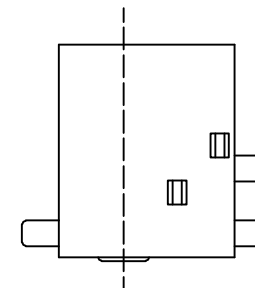
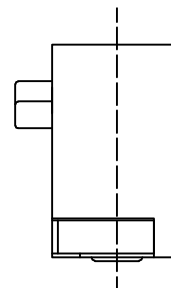
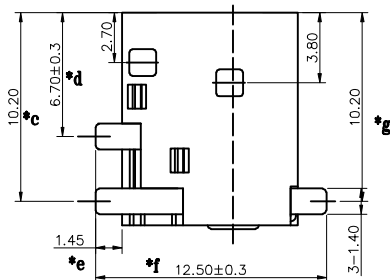
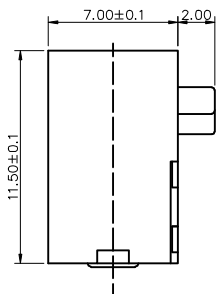


P.C.B LAYOUT TOP VIEW



SCHEMATIC



8					TOLERANCE										
7					UNLESS SPECIFIED										
6					UP TO 5mm: ±0.1	ANGULAR	A1	2018.12.24	標原尺寸13.4更新為12.5, 新增尺寸1.45, 取消原尺寸11.0						
5	彈片腳	PBS	1	Ag-PLATED	ABOVE 5mm: ±0.2	±1°	NO	DATE	REVISIONS			BY	APPD		
4	插片腳	BRASS	1	Ag-PLATED	TITLE: DC JACK			UNIT : MM	ROHS	DWN					
3	平片	BRASS	1	Ag-PLATED	MODEL: DC-044G-2.0-PU-G			SCALE: 1:1	COMPLIANT	CHK'D					
2	圓針	BRASS	1	Ag-PLATED	HAOYU(HONGKONG)LIMITED 皓宇(香港)有限公司								APPD		
1	基座	PA9T	1										PRO.AGL:		
NO.	PART	NAME		MATERIAL	QTY	FINISHING									

X-ON Electronics

Largest Supplier of Electrical and Electronic Components

Click to view similar products for [DC Power Connectors](#) category:

Click to view products by [HOOYA](#) manufacturer:

Other Similar products are found below :

[KLDX-SMT-0202-BPTR](#) [171-0722-E](#) [K596](#) [KLD-0201-BC](#) [4C6831AX](#) [10073976-112LF](#) [LCB60PW-M](#) [LCB30PW-M](#) [LCB60PB-M](#)
[LCC30PB-M](#) [LCB50PW-M](#) [LCB50-M](#) [LCB60-F](#) [LCC30-M](#) [LCB40PW-M](#) [LCC30PW-M](#) [LCB50-F](#) [LCB40-F](#) [LCB30-F](#) [LCC40-M](#)
[LCC40PB-M](#) [LCB40PB-M](#) [LCC40-F](#) [LCB60-M](#) [LCC40PW-M](#) [LCB50PB-M](#) [DC-002-100](#) [DC-031A-130](#) [DC-031A-100](#) [DC-003A-130](#)
[DC-045-130](#) [DC-192-130](#) [DC-033-130](#) [DC-011-100](#) [DC-002F-130](#) [DC-002-130](#) [DB-14-2F](#) [DC-183B](#) [DC-060-04A](#) [DC-099-200](#) [DC-015-](#)
[250-A](#) [DC-016-200-A](#) [DC-005A-200](#) [DC-044A-200](#) [DC-088-200](#) [DC-022A-200](#) [DC-038-150](#) [DC-012A-250](#) [DC-005C-130](#) [DC-012A-200](#)