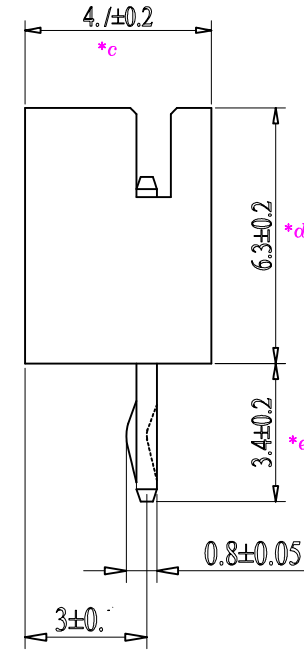
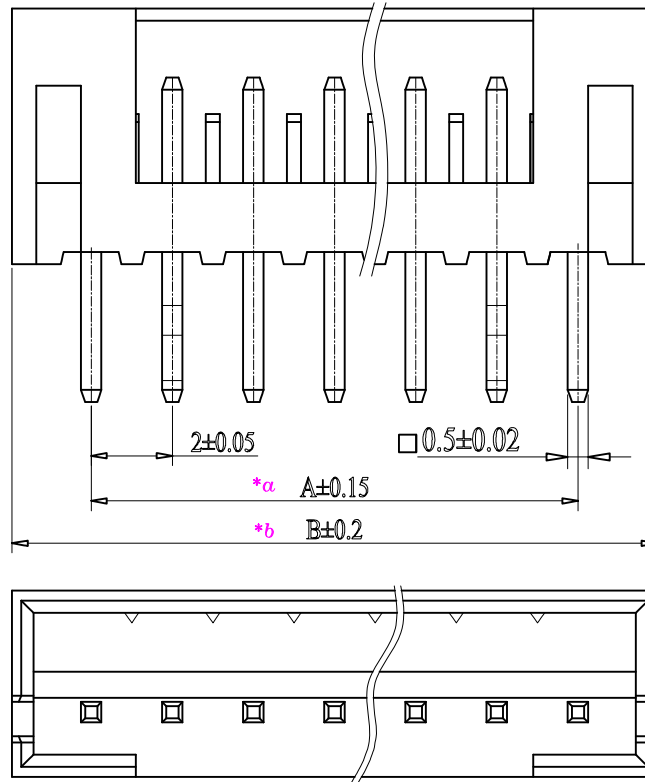

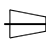



HAOYU

POLES	PART NO	DIMENSIONS(mm)	
		A	B
2	PH2001-02K	2.0	6.1
3	PH2001-03K	4.0	8.1
4	PH2001-04K	6.0	10.1
5	PH2001-05K	8.0	12.1
6	PH2001-06K	10.0	14.1
7	PH2001-07K	12.0	16.1
8	PH2001-08K	14.0	18.1
9	PH2001-09K	16.0	20.1
10	PH2001-10K	18.0	22.1
11	PH2001-11K	20.0	24.1
12	PH2001-12K	22.0	26.1
13	PH2001-13K	24.0	28.1
14	PH2001-14K	26.0	30.1
15	PH2001-15K	28.0	32.1
16	PH2001-16K	30.0	34.1



2-5PIN 打K 都是左右第一枚针
6PIN 以上打K 都是左右第二枚针

				TOLERANCE		A3	2022.7.13	更新图纸	WM	
				UNLESS SPECIFIED		A2	2021.6.30	更新图面	WM	
				UP TO 5mm: ±0.1	ANGLES	A1	2017.5.24	更新图面	pwj	
				ABOVE 5mm: ±0.2	±1.5°	NO	DATE	REVISIONS	BY	APPD
				TITLE: PH,2.0mm,180°			UNIT : MM	ROHS	DWN	
				PART NO.:PH2001-10K			SCALE: 2:1	COMPLIANT	CHK'D	
									APPD	
2	PIN	BRASS	X	SN-PLATING						
1	HOUSE	PA66	1	WHITE						
NO.	PART NAME	MATERIAL	QTY	FINISHING	 HAOYU(HONG KONG) LIMITED 皓宇(香港)有限公司		PRO.AGL:  		REV :A3	

X-ON Electronics

Largest Supplier of Electrical and Electronic Components

Click to view similar products for [Headers & Wire Housings](#) category:

Click to view products by [HOOYA](#) manufacturer:

Other Similar products are found below :

[0015917161](#) [0022155065](#) [57102-F02-18ULF](#) [58102-G61-06LF](#) [582553-1](#) [01.001.5753.1](#) [0050291907](#) [02.125.8002.8](#) [609-3404](#) [61062-3](#)
[CSU011177004](#) [622-0430](#) [622-3653LF](#) [63453-116](#) [636-1030](#) [636-1427](#) [636-3427](#) [636-4007](#) [641938-9](#) [65495-038](#) [65692-001LF](#) [65781-018](#)
[65781-047](#) [65817-010LF](#) [65817-015LF](#) [67095-007LF](#) [67601157](#) [68631-112](#) [68645-018](#) [699319-000](#) [70.362.1628.0](#) [70-4210](#) [70-4226B](#) [70-](#)
[4853B](#) [71.350.2428.0](#) [733-134](#) [733-162](#) [760-3052](#) [MHR-64-VUAL](#) [80.063.4001.1](#) [800-90-001-10-001000](#) [801-43-002-10-013000](#)
[801-43-006-10-002000](#) [803-43-024-10-001000](#) [803-93-012-10-001000](#) [8-1437020-4](#) [819-22-004-30-001101](#) [820-22-006-30-001101](#)
[820-22-008-30-001101](#) [821-22-002-10-001101](#)