

SPECIFICATIONS

HTC-V-L, HTC-VV-L, HTC-VP-L



***CO2 concentration and temperature
transmitter with 0-10V outputs***

Prepared by:
HOTCOLD s.c.

2019-07-01

1. Introduction.....3

1.1.Functions 3

1.2.Characteristics 3

2. Technical Data.....4

2.1.General parameters.....4

2.2.CO2 measurement parameters4

2.3.Temperature measurement parameters4

2.4.Parameters of analog outputs.....4

2.5.Thermoelement parameters4

3.Installation.....5

3.1....Safety.....5

3.2.Unit design.....5

3.3.Leads description.....5

3.4.Unit configuration.....6

3.5.LED signaling.....7

Introduction

The subject of this document is the functionality characteristics of the CO₂ concentration and temperature transmitter based on the MH-Z14 sensor with 2 analogue outputs in 0-10V standard.

CAUTION: Before starting the unit, please read the content of this document.

1.1. Functions

- CO₂ concentration measurement
- analogue voltage output 0-10 [V] (proportional to CO₂ concentration)
- temperature measurement
- analogue voltage output 0-10 [V] (proportional to T in the range 0-50C)
- RTD type temperature sensor leads available on the connector
- LED unit status indication
- LED indication of CO₂ concentration level / CO₂ sensor status

1.2. Characteristics

Main function of the HTC-V-L transmitter is to measure the CO₂ content in the air. The CO₂ concentration values measured via the integrated MH-Z14 sensor are then converted and averaged in the microcontroller. The temperature is measured in parallel. Both values are presented in analogue form on two independent voltage outputs in 0-10 [V] standard.

As an option, it is also possible to solder a thermoresistive sensor with the outputs available on the connector (without a conditioning system).

Technical data

1.3. General parameters

Power	
- DC	DC 24V (20...30V)
- AC	AC 24V (20...27.6V)
Current consumption	
- typical ¹⁾	<40 mA
- maximum ²⁾	<67 mA
LED signaling	see section "LED signaling"
Installation connector	screwed in 5.00mm raster ($\leq 2.5\text{mm}^2$)
Dimensions	120 x 80 x 25 (L x H x W)
Weight	ca. 110 g
Mount ³⁾	wall mounted
Operating environment	dust-free, air, neutral gases
Operating temperature	0°C ÷ 50°C

- 1) Average current consumption of the device under conditions: 24V DC power supply, each voltage output with 10k resistance;
- 2) Maximum instantaneous current consumption of the device under conditions as in point 1) + voltage outputs with 1k resistance;
- 3) Installation of the unit should be carried out by qualified personnel; Vertical orientation according to markings UP, DOWN;

1.4. CO2 measurement parameters

Sensor type	MH-Z14
Measuring range	0 ÷ 2000 ppm
Accuracy:	$\pm 5\% \pm 50$ ppm
Sampling rate	2 Hz
Response time ¹⁾	< 2 min

- 1) Specified response time is equal to one time constant corresponding to 90% of the fixed value;

1.5. Temperature measurement parameters

Sensor type	DS18B20
Measuring range	0°C ÷ 50°C
Resolution	12 bits (0,05°C)
Accuracy	± 0.5 C
Sampling rate	0.5 Hz
Response time ¹⁾	750ms

- 1) The condition for obtaining the given response times is an airflow > 1m/s; specified response time is equal to one time constant corresponding to 63% of the set value;

1.6. Analogue output parameters

Output type	voltage
Output range	10 V
Resolution	12 bits (5 mV)
Load capacity	$R_L > 1\text{ k}\Omega$ (recommended 10k Ω)
Frequency of refreshment	2 Hz

1.7. Thermoelement parameters

Sensor type	e.g. Pt100, Pt1000
Measuring range	0°C ÷ 50°C

2. Installation

2.1. Safety

- The unit must be installed by qualified personnel!
- All connections must be made according to the wiring diagrams shown in this specification!
- Check all electrical connections before starting up!

2.2. Unit design

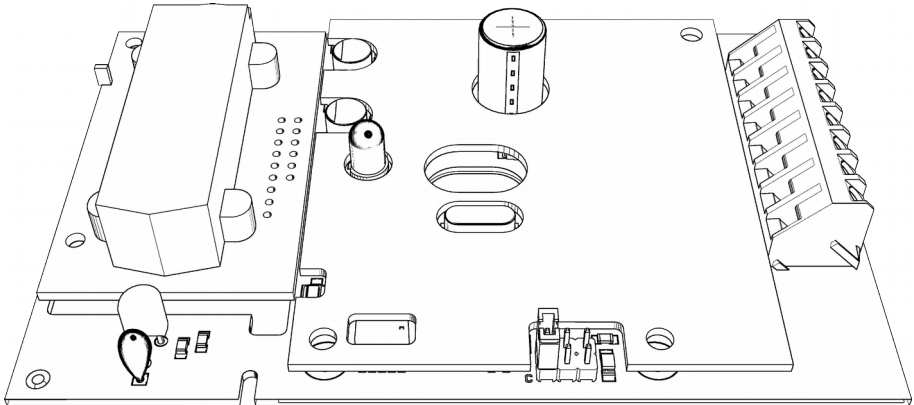


Figure 1. View of printed circuit in the wall-mounted version of the transmitter.

2.3. Description of Connections

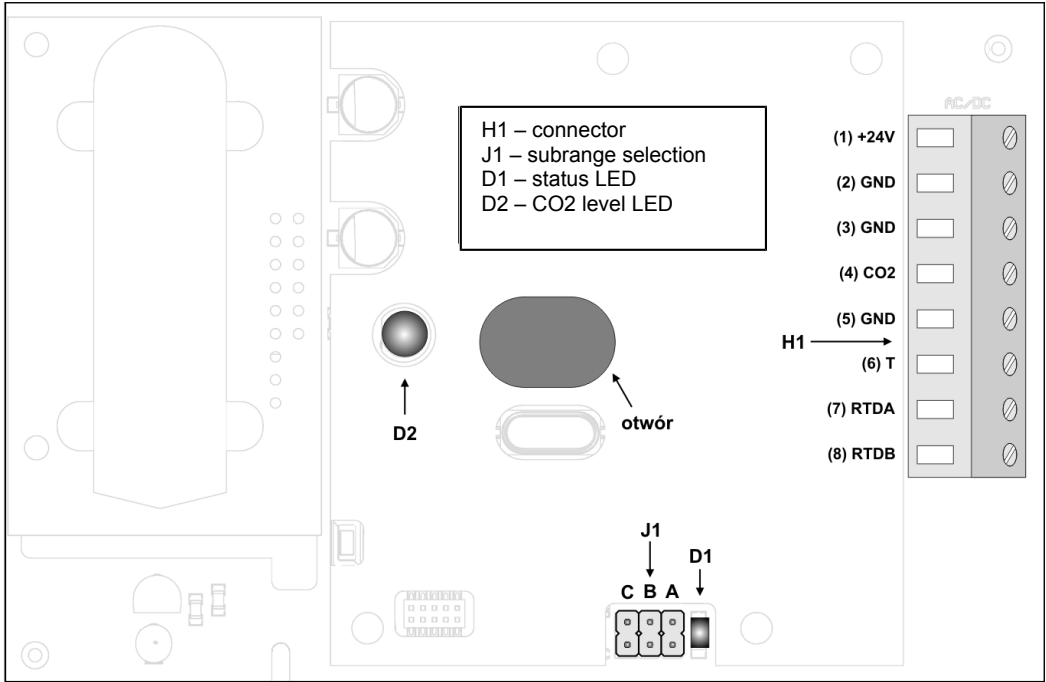


Figure 2. Description of leads in the wall-mounted version of the transmitter.

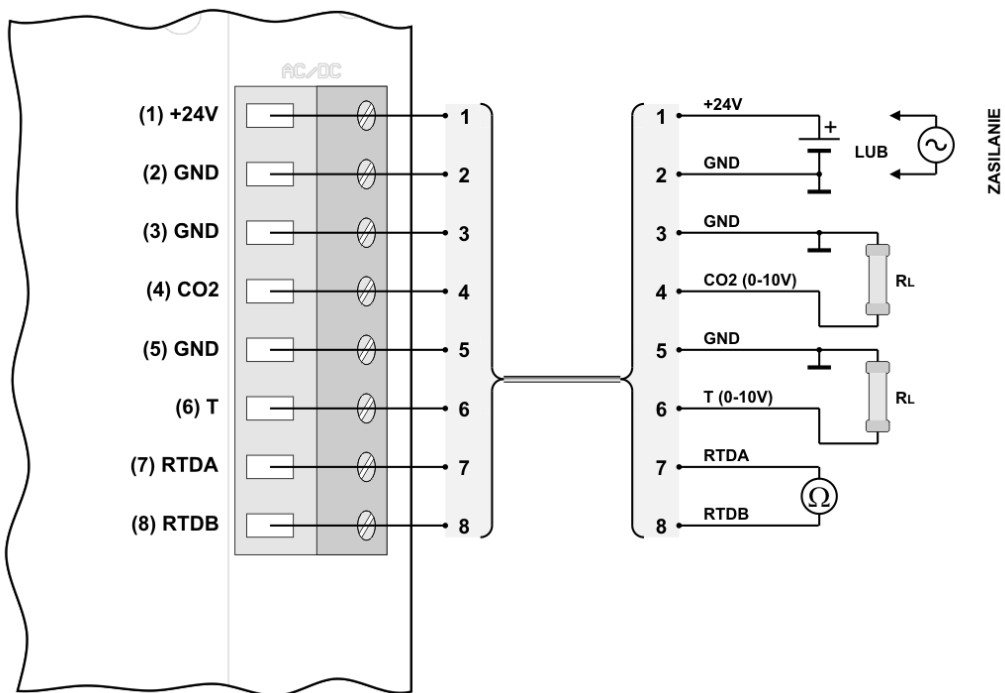


Figure 3. Wiring diagram for the wall-mounted version of the transmitter.

2.4. Unit configuration

The unit is equipped with 3 jumpers for hardware setup of the measurement subrange (according to the table below).

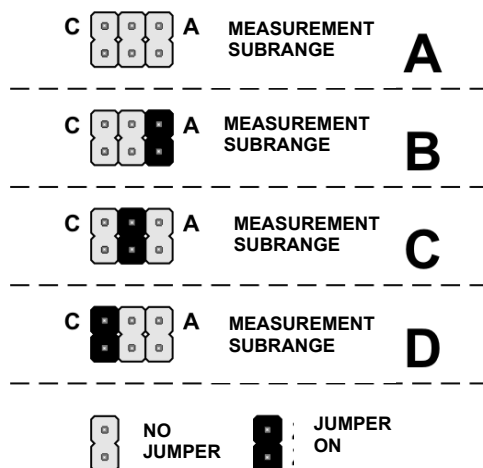


Figure 4. Configuration of the transmitter measuring subrange.

Table of the transmitter measuring subranges:

Subrange	Carbon dioxide concentration range
A	0 ÷ 2000 ppm
B	0 ÷ 1600 ppm
C	0 ÷ 1200 ppm
D	0 ÷ 800 ppm

2.5. LED signaling

Table of levels/statuses indicated by LED D2:

Status	Description	LED color	Behavior
1	CO2 module preheating	green	flashing (250ms / 250ms ^{**})
2	0– 800 [ppm]*	green	steady lit
3	800– 1200 [ppm]*	yellow	steady lit
4	1200– 2000 [ppm]*	red	steady lit
5	> 2000 [ppm]	red	flashing (250ms / 250ms ^{**})
6	no CO2 sensor or other error	red	flashing (250ms / 250ms ^{**})

(*) LED status switching hysteresis is ± 50 ppm.

(**) Flashing (XXX ms / YYYY ms) means XXX - activation time, YYYY - deactivation time

X-ON Electronics

Largest Supplier of Electrical and Electronic Components

Click to view similar products for [Air Quality Sensors](#) category:

Click to view products by [HotCold](#) manufacturer:

Other Similar products are found below :

[GMS-MSTH2.S.V.3](#) [MO86561](#) [GMS10SENSORS](#) [IR25TT](#) [208280-0001](#) [MP7227-TC](#) [OXY-LC-A25-455](#) [AO-02](#) [ACM2000](#) [AMS2106](#)
[AGS10](#) [AO-08](#) [AO-07](#) [AO-09](#) [AOF1010](#) [SGX-BLD1](#) [SGX-BLD2](#) [3.000.535](#) [HTC-I-L/2000](#) [HTC-V-L/2000](#) [GF5200-A0545-A](#) [3.000.608](#)
[3.000.593](#) [11028362-00](#) [T6713-6H](#) [POLOLU-1482](#) [803P602](#) [ER-Q](#) [DE800.V.1](#) [3.000.060](#) [3.000.475](#) [3.000.496](#) [3.000.497](#) [3.000.630](#)
[BME680](#) [HPMA115S0-XXX](#) [ZMOD4410AI1R](#) [T8031-3M](#) [VQ6MB](#) [T8300-DB](#) [INIR-CD-5%](#) [IR11GJ](#) [VQ31MB](#) [IR11BR](#)
[GP2Y1026AU0F](#) [GP2Y1023AU0F](#) [VQ549ZD](#) [MHM501-00](#) [MHM400-01](#) [MHM306-01](#)